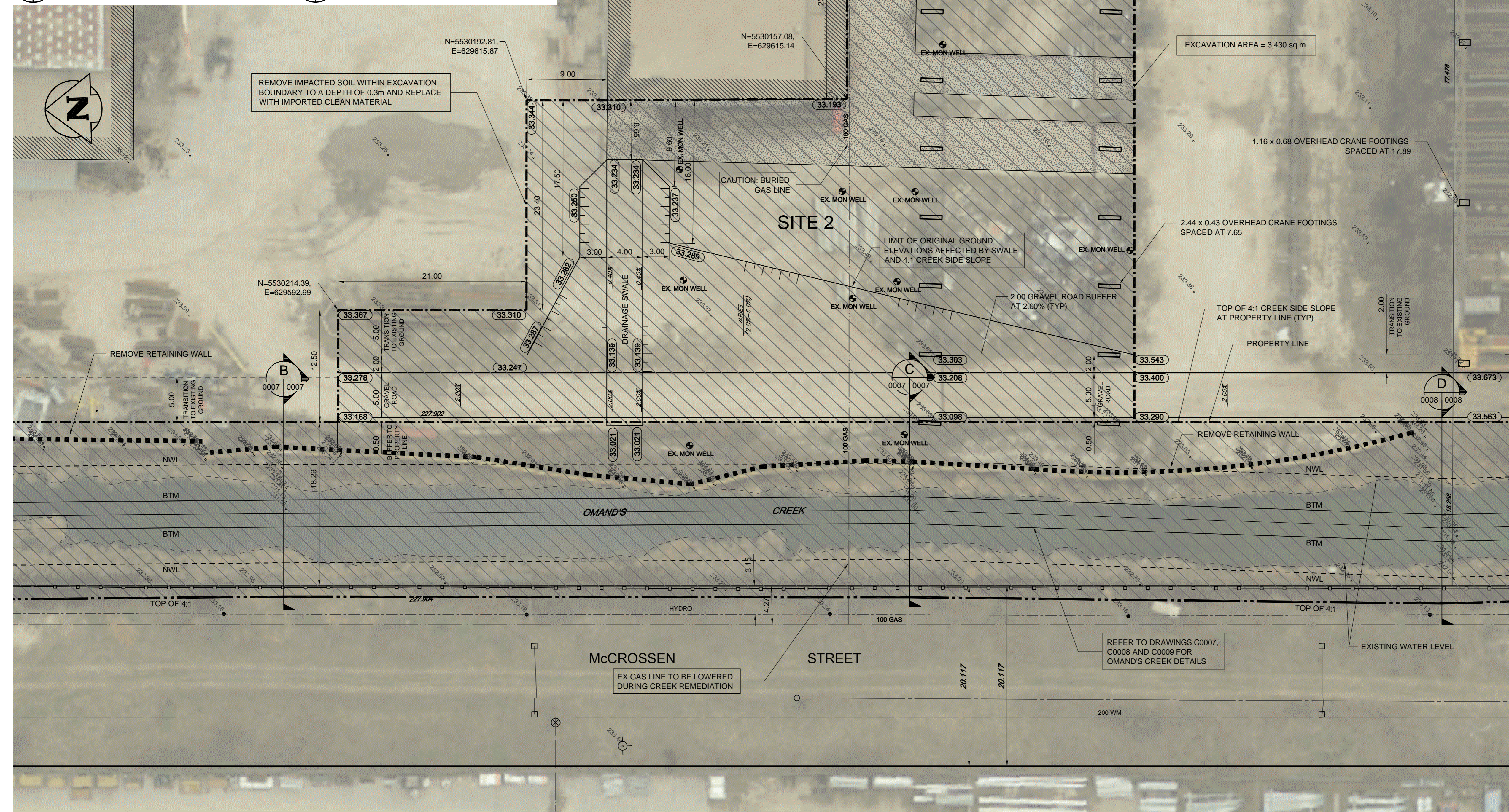


1
NTS
TYPICAL GRAVEL PAVEMENT REPLACEMENT

2
NTS
TYPICAL SOIL REPLACEMENT



LEGEND	
	PROPERTY LINE
	BUILDING OUTLINE
	RETAINING WALL
	CURB
	ASPHALT
	VALVE
	HYDRANT
	PIEZOMETER
	MONITORING WELL
	MANHOLE
	HYDRO POLE
	HYDRO POLE ANCHOR
	CATCHBASIN
	GUTTER INLET
	SURVEY BAR
	SIGN POST
	LIGHT STANDARD
	150 WM
	400 FM
	300 LDS
	250 WWS
	250 CS
	SURFACE SOIL EXCAVATION
	EXCAVATION BOUNDARIES
	ASPHALT
	CONCRETE
	SOIL AREA
	PROPOSED ELEVATION
	EXISTING ELEVATION
	SLOPE
	OVERHEAD CRANE FOOTING
	FENCE

WARNING
IF POWER EQUIPMENT OR EXPLOSIVES ARE TO BE USED FOR EXCAVATION ON THIS PROJECT THE CONTRACTOR MUST:
1. NOTIFY THE GAS COMPANY OF THE PROPOSED LOCATION OF EXCAVATION.
2. TAKE PRECAUTION TO AVOID DAMAGE TO GAS COMPANY INSTALLATIONS. SEE PROVINCIAL REGULATION 480 FOR DETAILS.

NOTES:
1. ALL DIMENSIONS AND ELEVATIONS TO BE CONFIRMED IN FIELD PRIOR TO CONSTRUCTION
2. ALL AREAS WITHIN EXCAVATION BOUNDARIES TO BE REPLACED WITH GRAVEL UNLESS OTHERWISE INDICATED

LOCATION APPROVED UNDERGROUND STRUCTURES	
SUPV. U/G STRUCTURES COMMITTEE	DATE
NOTE: LOCATION OF UNDERGROUND STRUCTURES AS SHOWN ARE BASED ON THE BEST INFORMATION AVAILABLE. BUT NO GUARANTEE IS GIVEN THAT ALL EXISTING UTILITIES ARE SHOWN OR THAT THE GIVEN LOCATIONS ARE EXACT. CONFIRMATION OF EXISTENCE AND EXACT LOCATION OF ALL SERVICES MUST BE OBTAINED FROM THE INDIVIDUAL UTILITIES BEFORE PROCEEDING WITH CONSTRUCTION.	

B.M. ELEV.	NO.	ISSUED FOR TENDER	DATE	BY
	01	ISSUED FOR TENDER	13.09.13	KJM
	00	ISSUED FOR 99% REVIEW	13.08.29	BM
		REVISIONS	DATE	BY

TETRA TECH

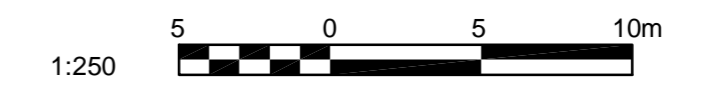
DESIGNED BY KJM, TRC	CHECKED BY RDW
DRAWN BY NL	APPROVED BY GS
HOR. SCALE: 1 : 250	RELEASED FOR CONSTRUCTION
VERTICAL:	DATE
DATE 13.08.29	DATE

PROVINCE OF MANITOBA
R. D. WIZBICKI
Member
22319
REGISTERED PROFESSIONAL ENGINEER

THE CITY OF WINNIPEG
PLANNING, PROPERTY & DEVELOPMENT DEPARTMENT

DOMINION BRIDGE REMEDIATION
EXCAVATION SITE 2 PLAN

CITY DRAWING NUMBER LD-7192
SHEET 3 OF 11
C0003



APEGM
Certificate of Authorization
TETRA TECH WEI Inc.
No. 5313 Date: April 30, 2014