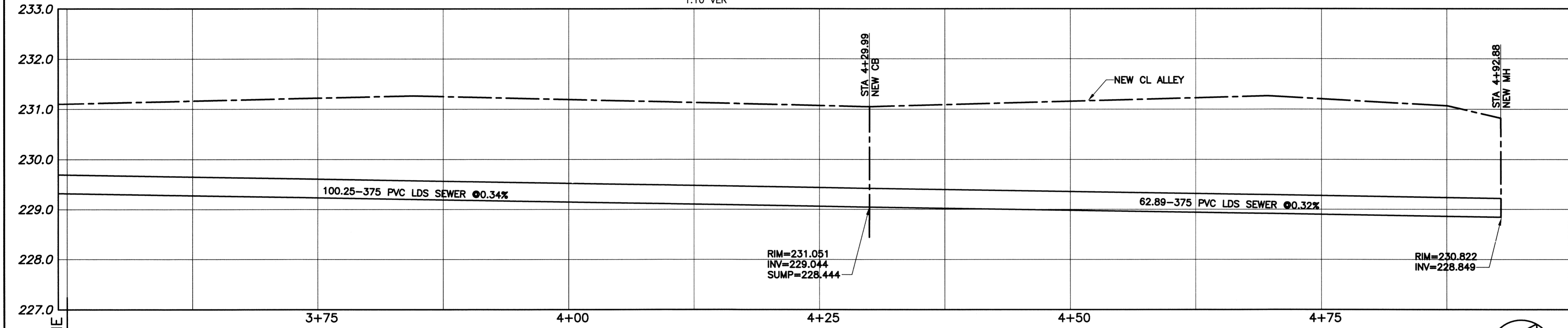


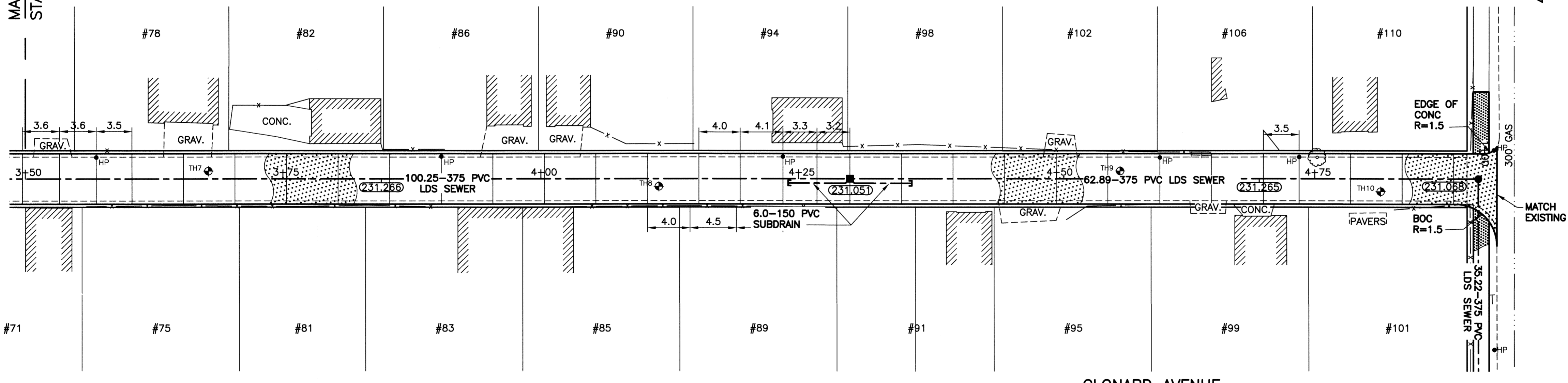
ALLEY PAVEMENT PROFILE

SCALE: 1:250 HOR
1:10 VER



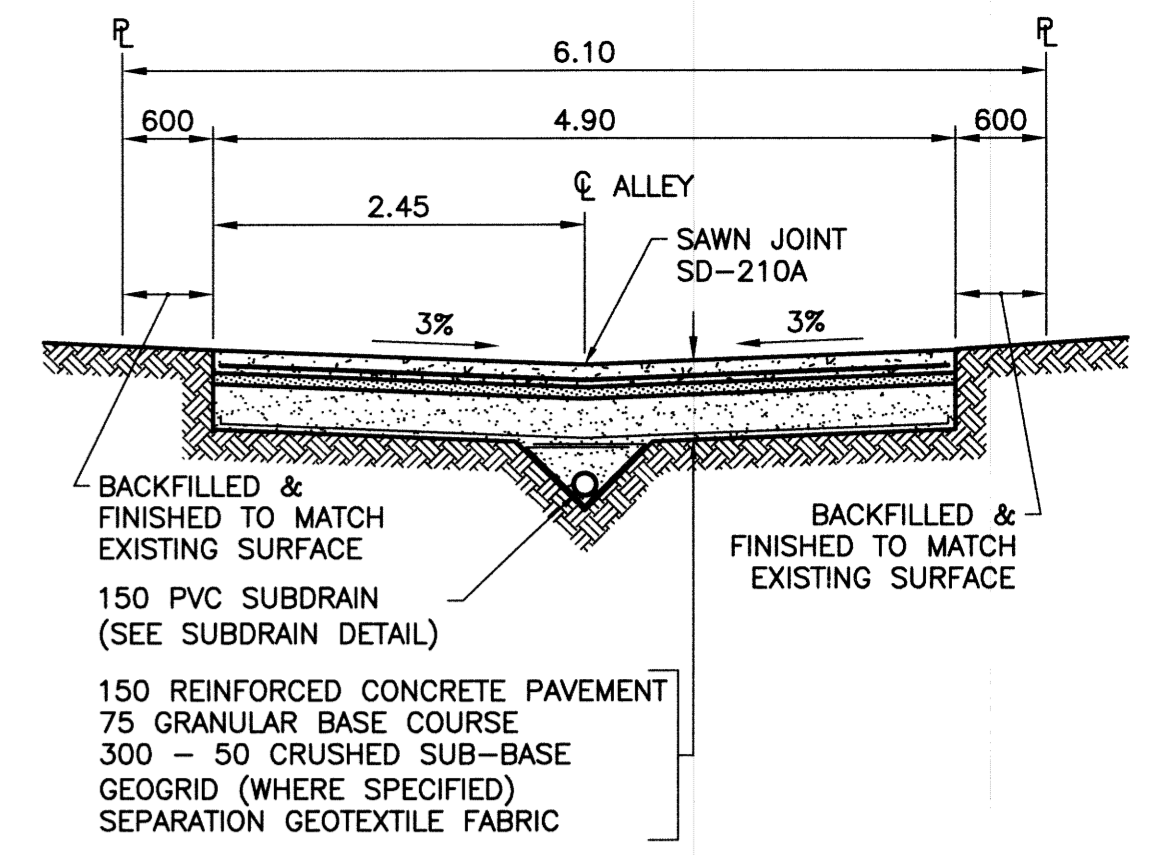
ALLEY UNDERGROUND PROFILE

SCALE: 1:250 HOR
1:50 VER



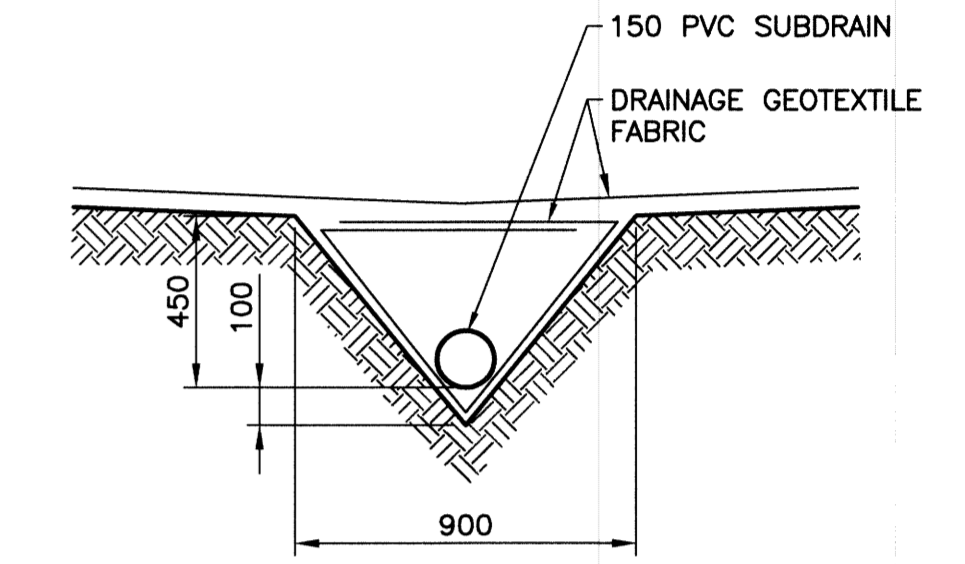
ALLEY PAVEMENT PLAN

SCALE: 1:250 HOR



CROSS SECTION

(STA 2+45.98 - 4+89.78)
SCALE: NTS



SUBDRAIN DETAIL

SCALE: 1:20

NOTES:

1. STATION CHAINAGE IS BASED ON CENTERLINE OF ALLEY RIGHT OF WAY.
2. ADJUST MH AND CB RIMS TO NEW GRADES.
3. PLUG SUBDRAINS AT TERMINAL ENDS.
4. REGRADE EXISTING PRIVATE SIDEWALKS AS REQUIRED.
5. INSTALLATION OF LIP CURBS AND THEIR EXTENTS TO BE DETERMINED BY THE CONTRACT ADMINISTRATOR.
6. LIGHT STANDARDS, HYDRO POLES AND ANCHORS MAY REQUIRE TEMPORARY SUPPORT/REMOVAL OR REPLACEMENT AT THE CONTRACTOR'S EXPENSE.
7. ISOLATE ALL POLES, BASES AND PILES WITHIN ALLEY RIGHT OF WAY (SD-228C).
8. AVOID DAMAGE TO EXISTING TREES WITHIN THE LIMITS OF CONSTRUCTION.

WARNING

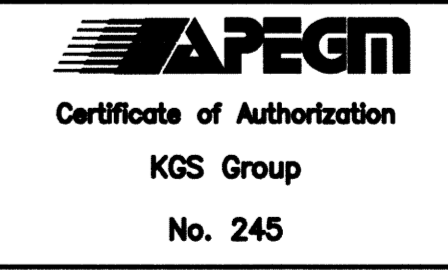
NOTIFY THE GAS COMPANY OF THE PROPOSED LOCATION OF EXCAVATION. TAKE PRECAUTION TO AVOID DAMAGE TO GAS COMPANY INSTALLATIONS. SEE PROVINCIAL REGULATION 210/72 FOR DETAILS.

METRIC

WHOLE NUMBERS INDICATE MILLIMETRES
DECIMALIZED NUMBERS INDICATE METRES

PROPERTY LIMITS DELINEATION

DELINEATION OF PROPERTY LIMITS AS SHOWN ON THIS DWG DOES NOT REPRESENT A "LEGAL SURVEY". KGS GROUP MAKES NO REPRESENTATION OR WARRANTY AS TO THE ACCURACY OF PROPERTY LIMITS DELINEATED ON THIS DWG, NOR ON THE DIMENSIONAL ACCURACY OF DWG FEATURES RELATIVE TO THOSE PROPERTY LIMITS.



300 LDS	LAND DRAINAGE SEWER	300 LDS	TEST HOLE		
250 WWS	WASTE WATER SEWER	250 WWS	GUY WIRE		
	GAS		LIGHT STANDARD		
	HYDRO		BACK OF CURB		
	M.T.S.		CONCRETE		
150 WM	WATERMAIN	150 WM	ASPHALT		
	HYDRANT		SIDEWALK		
	VALVE		PROPERTY LINE		
	MANHOLE		SURVEY BAR		
	CATCH BASIN		GEODETIC BENCHMARK		
	CURB INLET		ELEVATION		
	POLES		LEGEND-PLAN		
EXISTING	LEGEND-PLAN	PROPOSED	LEGEND-PLAN	PROPOSED	EXISTING

LOCATION APPROVED UNDERGROUND STRUCTURES

NOTE: LOCATION OF UNDERGROUND STRUCTURES AS SHOWN ARE BASED ON THE BEST INFORMATION AVAILABLE BUT NO GUARANTEE IS GIVEN THAT ALL EXISTING UTILITIES ARE SHOWN OR THAT THE GIVEN LOCATIONS ARE EXACT. CONFIRMATION OF EXISTENCE AND EXACT LOCATION OF ALL SERVICES MUST BE OBTAINED FROM THE INDIVIDUAL UTILITIES BEFORE PROCEEDING WITH CONSTRUCTION.

DESIGNED BY: AKW
DRAWN BY: DMW
CHECKED BY: CR
APPROVED BY: CR

HOR. SCALE: 1:250
VERTICAL: 1:50

RELEASED FOR CONSTRUCTION: 13/08/12

NO. REVISIONS: 0
ISSUED FOR TENDER: 13/08/13
DATE BY: CR

KGS GROUP CONSULTING ENGINEERS

ENGINEER'S SEAL: M.T.O. FRODOTHAM 22878, August 13, 2013

CONSULTANT DRAWING NO. 13-0107-006_C03

THE CITY OF WINNIPEG PUBLIC WORKS DEPARTMENT TRANSPORTATION ENGINEERING DIVISION

PROJECT TITLE: 2013 LOCAL IMPROVEMENT ALLEY PROGRAM

BLenheim AVE/CLONARD AVE
ST ANNE'S RD TO RUE DES MEURONS
STA 3+50 TO STA 4+90

SHEET 03 OF 09
COMPUTER FILE NAME: 13-0107-006_CALL
CITY DRAWING NUMBER: 0003

P:\Projects\2013\13-0107-006\Doc\Control\ToBeIssued\DWG\13-0107-006_C03-Rev. 0.dwg - Tab: 03 Plotted By: Gloewen 08/13/2013 [Tue 12:50pm] PLOT 1:1 A-1