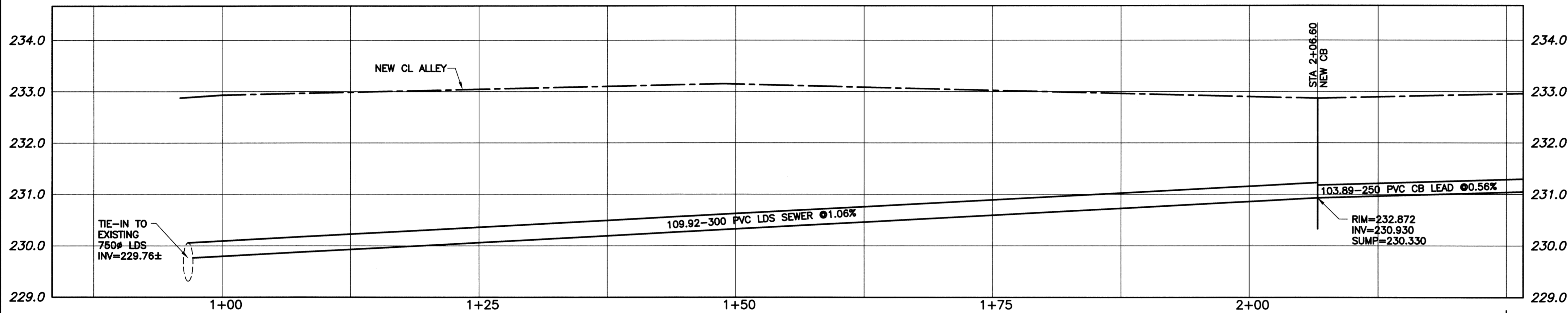
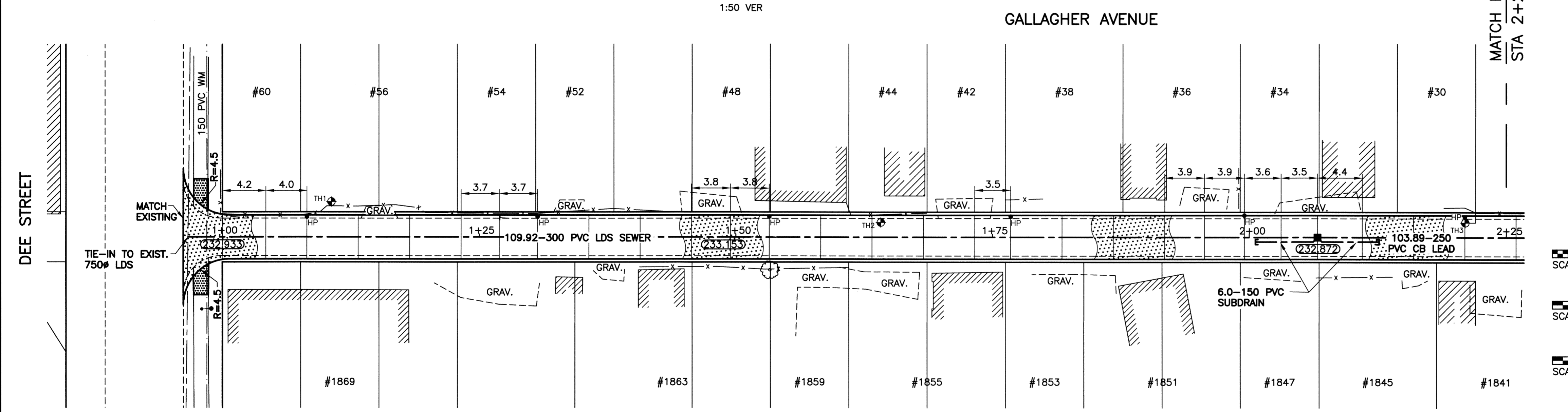


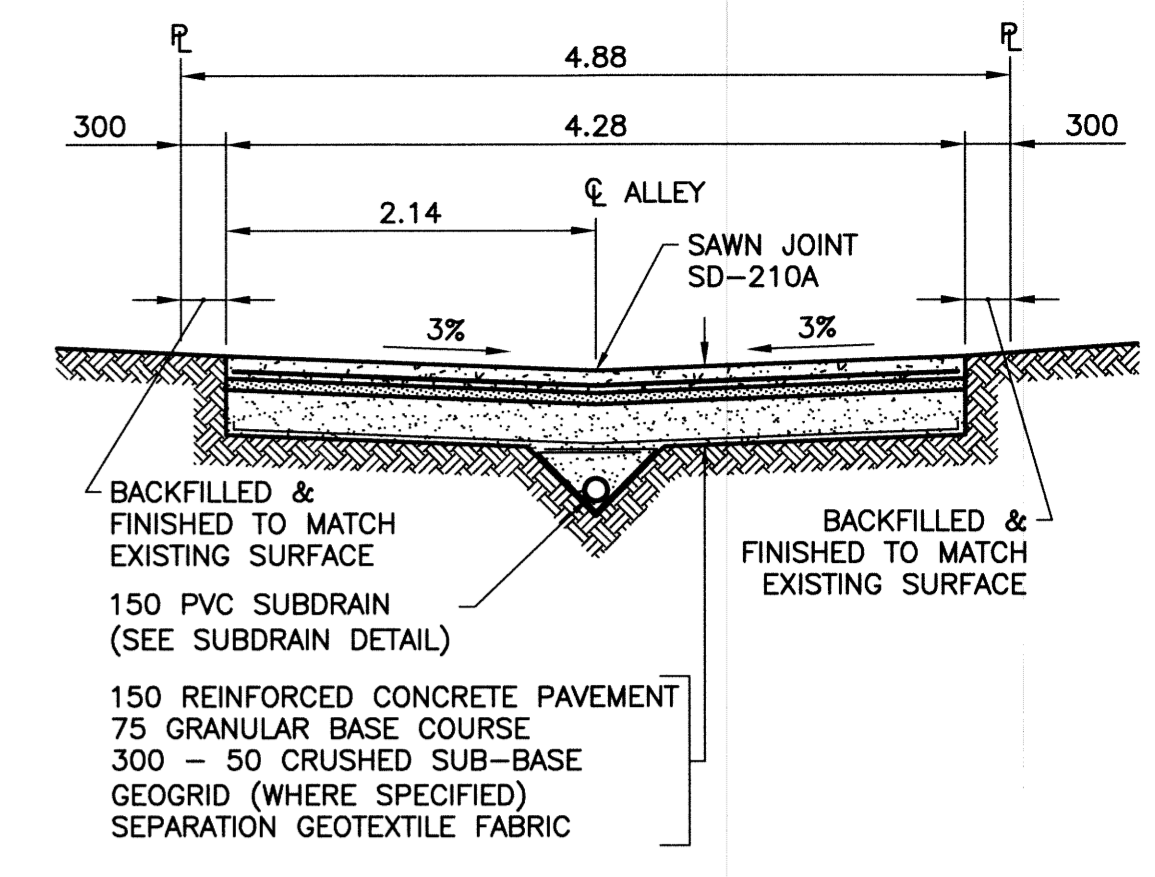
ALLEY PAVEMENT PROFILE
SCALE: 1:250 HOR
1:10 VER



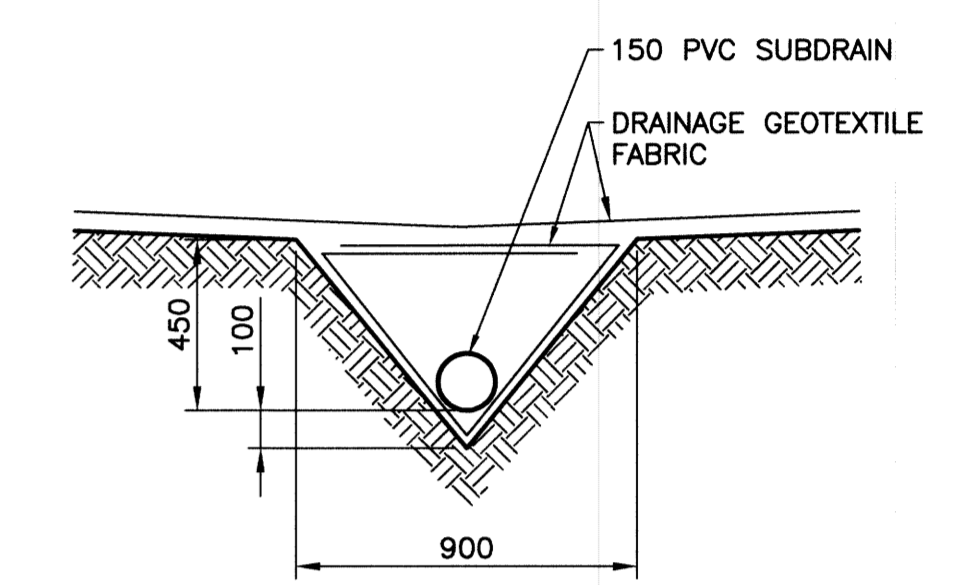
ALLEY UNDERGROUND PROFILE
SCALE: 1:250 HOR
1:50 VER



ALLEY PAVEMENT PLAN
SCALE: 1:250 HOR



TYPICAL CROSS SECTION
SCALE: NTS



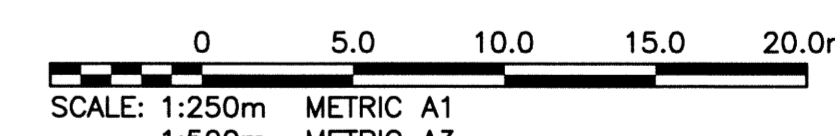
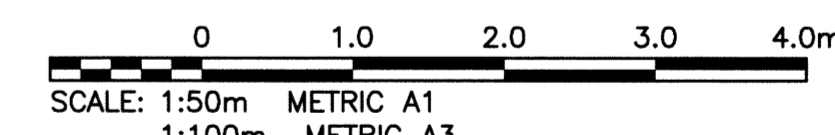
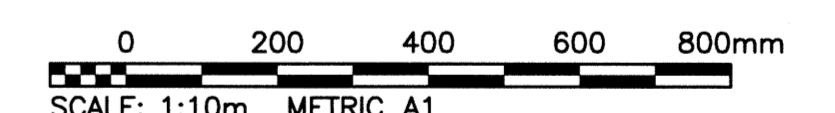
SUBDRAIN DETAIL
SCALE: 1:20

NOTES:

1. STATION CHAINAGE IS BASED ON CENTERLINE OF ALLEY RIGHT OF WAY.
2. ADJUST MH AND CB RIMS TO NEW GRADES.
3. PLUG SUBDRAINS AT TERMINAL ENDS.
4. REGRADE EXISTING PRIVATE SIDEWALKS AS REQUIRED.
5. INSTALLATION OF LIP CURBS AND THEIR EXTENTS TO BE DETERMINED BY THE CONTRACT ADMINISTRATOR.
6. LIGHT STANDARDS, HYDRO POLES AND ANCHORS MAY REQUIRE TEMPORARY SUPPORT/REMOVAL OR REPLACEMENT AT THE CONTRACTOR'S EXPENSE.
7. ISOLATE ALL POLES, BASES AND PILES WITHIN ALLEY RIGHT OF WAY (SD-228C).
8. AVOID DAMAGE TO EXISTING TREES WITHIN THE LIMITS OF CONSTRUCTION.

WARNING

NOTIFY THE GAS COMPANY OF THE PROPOSED LOCATION OF EXCAVATION. TAKE PRECAUTION TO AVOID DAMAGE TO GAS COMPANY INSTALLATIONS. SEE PROVINCIAL REGULATION 210/72 FOR DETAILS.



METRIC

WHOLE NUMBERS INDICATE MILLIMETRES
DECIMALIZED NUMBERS INDICATE METRES

PROPERTY LIMITS DELINEATION

DELINEATION OF PROPERTY LIMITS AS SHOWN ON THIS DWG DOES NOT REPRESENT A "LEGAL SURVEY". KGS GROUP MAKES NO REPRESENTATION OR WARRANTY AS TO THE ACCURACY OF PROPERTY LIMITS DELINEATED ON THIS DWG, NOR ON THE DIMENSIONAL ACCURACY OF DWG FEATURES RELATIVE TO THOSE PROPERTY LIMITS.



P:\Projects\2013\13-0107-006\Doc\Central\06\Beissued\DWG\13-0107-006_C07-Rev.0.dwg - Tab: 07 Plotted By: Gloewen 08/13/2013 [True 1:02pm] PLOT 1:1 A-1

300 LDS	LAND DRAINAGE SEWER	300 LDS		TEST HOLE	
250 WWS	WASTE WATER SEWER	250 WWS		GUY WIRE	
	GAS			LIGHT STANDARD	
	HYDRO			BACK OF CURB	
	M.T.S.			CONCRETE	
150 WM	WATERMAIN	150 WM		ASPHALT	
	HYDRANT			SIDEWALK	
	VALVE			PROPERTY LINE	
	MANHOLE			SURVEY BAR	
	CATCH BASIN			GEODETIC BENCHMARK	
	CURB INLET			ELEVATION	(32.231)
	POLES T-MTS		231.334	LEGEND-PLAN	PROPOSED
EXISTING	LEGEND-PLAN	PROPOSED	EXISTING	LEGEND-PROFILE	PROPOSED

LOCATION APPROVED UNDERGROUND STRUCTURES		B.M. - 8 ELEV. - 232.957		S.W. Cor. Logan Ave. & Keewatin St., T.M. in N. Conc. Foundation No. 1800 Logan Ave. (Westbrook Medical Centre), 3.0m W. & 0.3m below brick of N.E. Cor of Bldg.	
SUPV. U/G STRUCTURES DATE COMMITTEE		DESIGNED BY AKW		CHECKED BY CR	
NOTE: LOCATION OF UNDERGROUND STRUCTURES AS SHOWN ARE BASED ON THE BEST INFORMATION AVAILABLE BUT NO GUARANTEE IS GIVEN THAT ALL EXISTING UTILITIES ARE SHOWN OR THAT THE GIVEN LOCATIONS ARE EXACT. CONFIRMATION OF EXISTENCE AND EXACT LOCATION OF ALL SERVICES MUST BE OBTAINED FROM THE INDIVIDUAL UTILITIES BEFORE PROCEEDING WITH CONSTRUCTION.		DRAWN BY DMW		APPROVED BY CR	
		HOR. SCALE: 1:250		RELEASED FOR CONSTRUCTION:	
		VERTICAL: 1:50		DATE 13/08/12	
NO. REVISIONS		DATE		BY	
0		13/08/13		CR	

KGS GROUP
CONSULTING ENGINEERS

ENGINEER'S SEAL
M.C. ROWBOTHAM
22678
August 13, 2013

DESIGNED BY AKW
CHECKED BY CR
DRAWN BY DMW
APPROVED BY CR
HOR. SCALE: 1:250
VERTICAL: 1:50
RELEASED FOR CONSTRUCTION: DATE 13/08/12

THE CITY OF WINNIPEG
PUBLIC WORKS DEPARTMENT
TRANSPORTATION ENGINEERING DIVISION

PROJECT TITLE
2013 LOCAL IMPROVEMENT ALLEY PROGRAM

GALLAGHER AVE/LOGAN AVE
DEE ST TO KEEWATIN ST
STA 0+95.9 TO STA 2+25

SHEET OF
07 OF **09**

COMPUTER FILE NAME
13-0107-006_CALL

CITY DRAWING NUMBER
0007

CONSULTANT DRAWING NO.
13-0107-006_C07