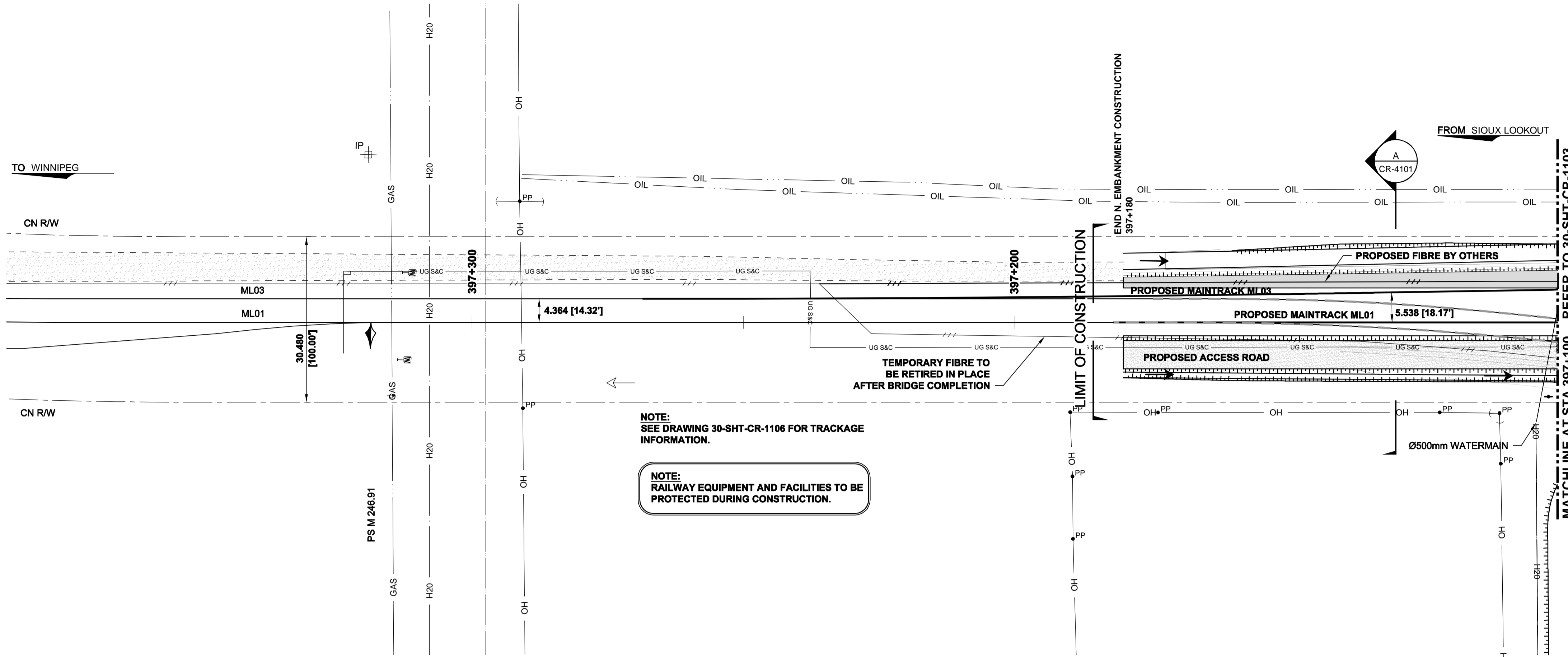
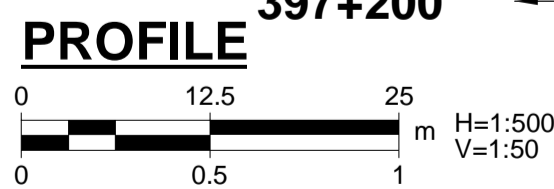
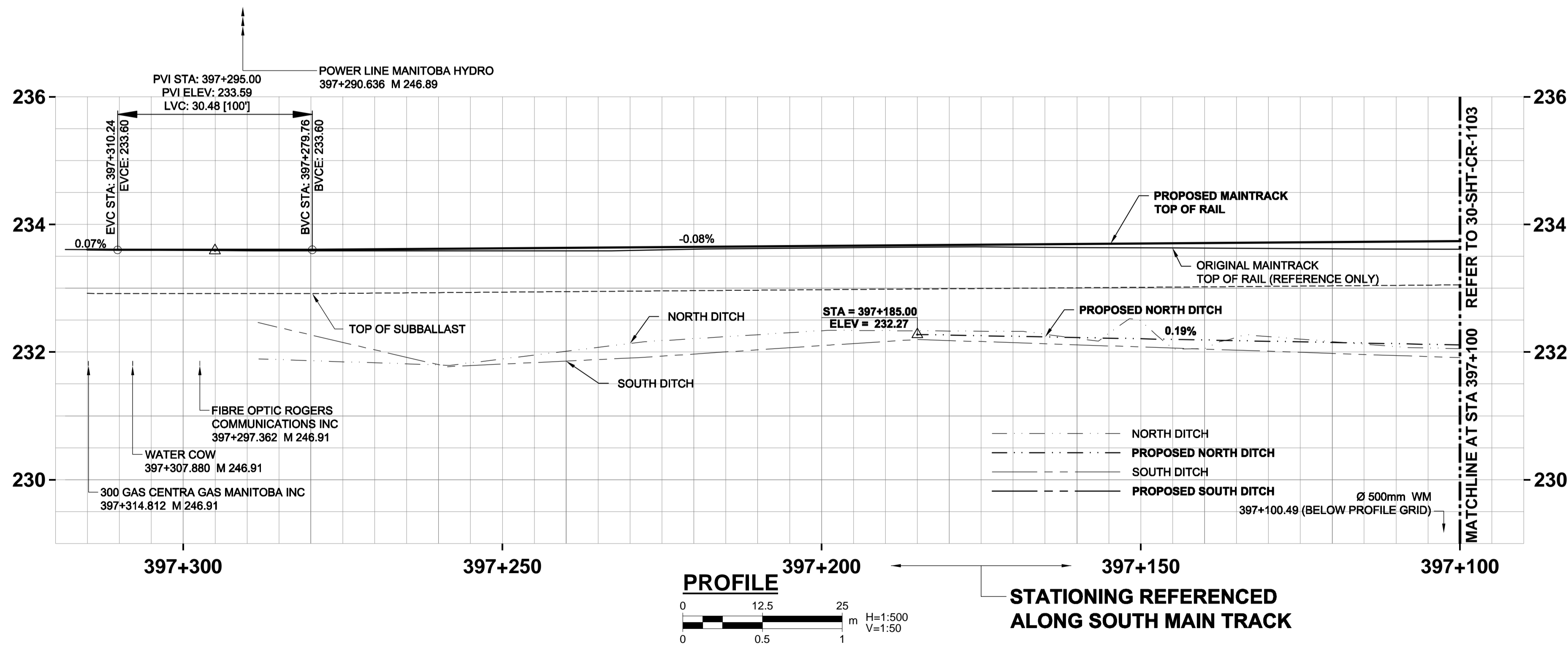
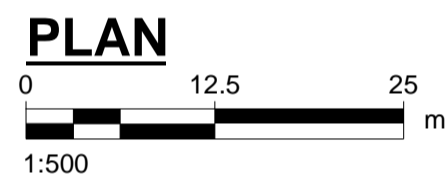


KEY PLAN



NOTE:
SEE DRAWING 30-SHT-CR-1106 FOR TRACKAGE INFORMATION.

NOTE:
RAILWAY EQUIPMENT AND FACILITIES TO BE PROTECTED DURING CONSTRUCTION.



STATIONING REFERENCED ALONG SOUTH MAIN TRACK

APEGM
Certificate of Authorization
AECOM Canada Ltd.
No. 4671 Date: 2013/12/10

BID OPPORTUNITY NO. 712-2013

LOCATION APPROVED UNDERGROUND STRUCTURES

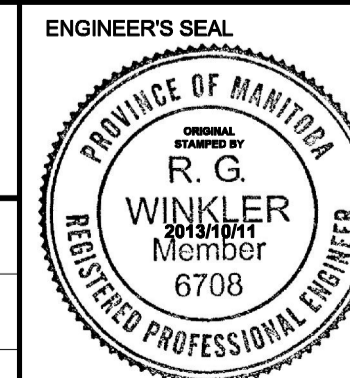
SUPV. U/G STRUCTURES COMMITTEE DATE

NOTE:
LOCATION OF UNDERGROUND STRUCTURES AS SHOWN ARE BASED ON THE BEST INFORMATION AVAILABLE. BUT NO GUARANTEE IS GIVEN THAT ALL EXISTING UTILITIES ARE SHOWN OR THAT THE GIVEN LOCATIONS ARE EXACT. CONFIRMATION OF EXISTENCE AND EXACT LOCATION OF ALL SERVICES MUST BE OBTAINED FROM THE INDIVIDUAL UTILITIES BEFORE PROCEEDING WITH CONSTRUCTION.

B.M. ELEV.	NO.	REVISIONS	DATE	BY
	1	Issued For Addendum	13/12/10	RCP
	0	Issued For Tender	13/10/15	RCP



DESIGNED BY	BRP	CHECKED BY	BJM
DRAWN BY	WD	APPROVED BY	RCP
HOR. SCALE:	1:500	RELEASED FOR CONSTRUCTION BY:	
VERTICAL:	1:50	DATE	2013/12/10



CONSULTANT DRAWING NO. 30-SHT-CR-1102



THE CITY OF WINNIPEG PUBLIC WORKS DEPARTMENT

PLESSIS ROAD TWINNING AND GRADE SEPARATION AT CN REDDITT SUBDIVISION CONTRACT 3

SHOOFLY REMOVAL AND FINAL CONFIGURATION PLAN AND PROFILE
Sta. 397+100 to Sta. 397+320

CITY DRAWING NUMBER U238-2014-2202
SHEET 02 OF 14

CR-1102