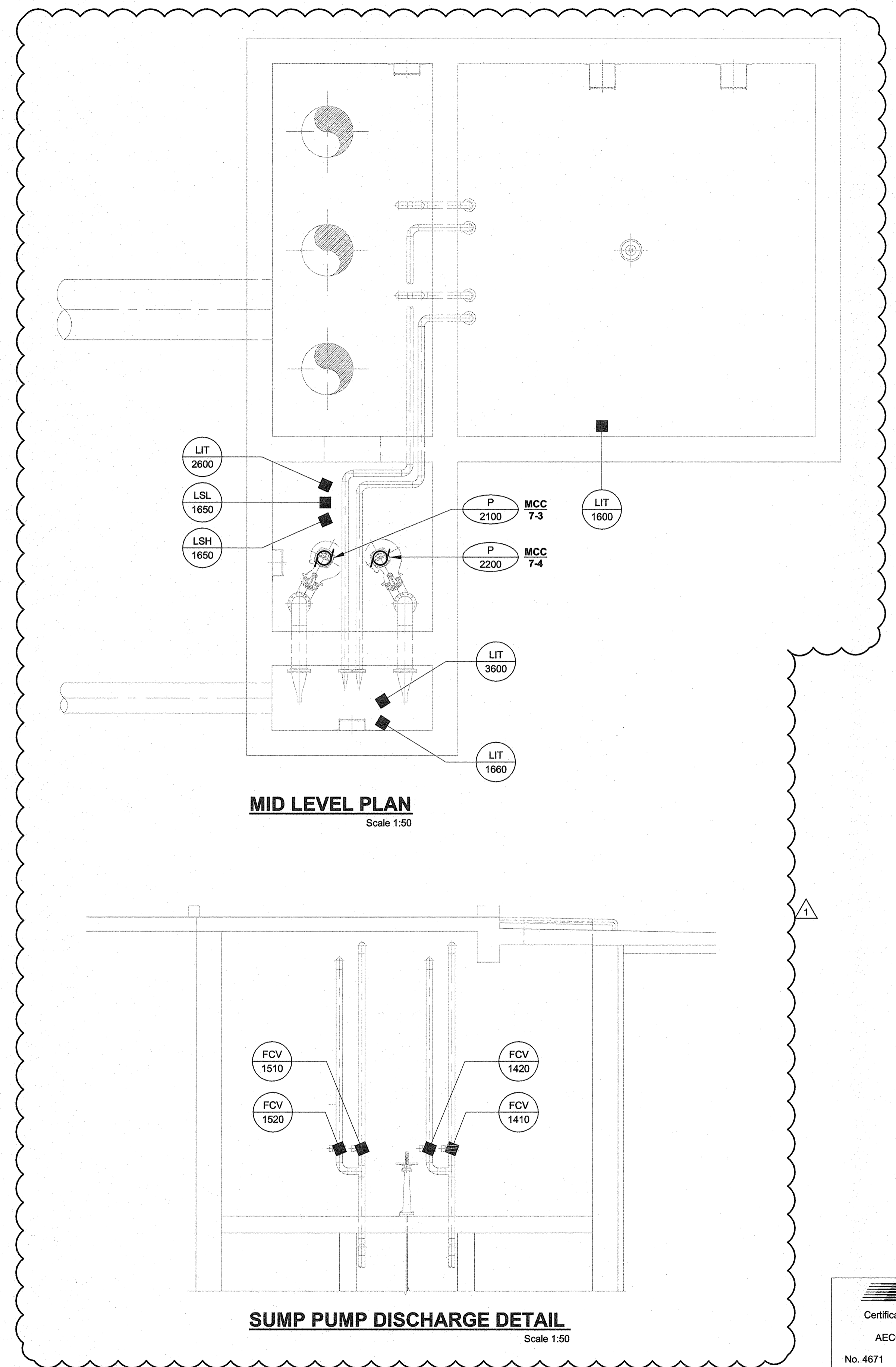


**SECTION**  
Scale 1:50



**MID LEVEL PLAN**  
Scale 1:50

**SUMP PUMP DISCHARGE DETAIL**  
Scale 1:50

**AECOM**  
 Certificate of Authorization  
 AECOM Canada Ltd.  
 No. 4671 Date: Dec 10 2013

**LOCATION APPROVED UNDERGROUND STRUCTURES**

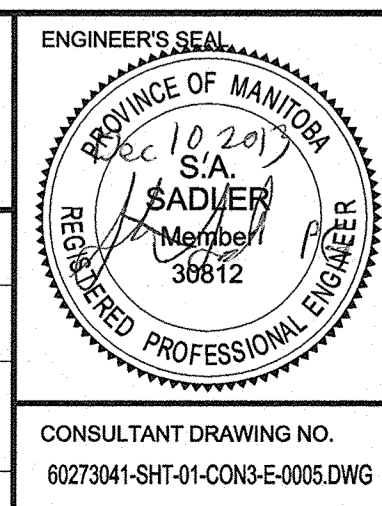
SUPV. U/G STRUCTURES COMMITTEE DATE

**NOTE:**  
 LOCATION OF UNDERGROUND STRUCTURES AS SHOWN ARE BASED ON THE BEST INFORMATION AVAILABLE. BUT NO GUARANTEE IS GIVEN THAT ALL EXISTING UTILITIES ARE SHOWN OR THAT THE GIVEN LOCATIONS ARE EXACT. CONFIRMATION OF EXISTENCE AND EXACT LOCATION OF ALL SERVICES MUST BE OBTAINED FROM THE INDIVIDUAL UTILITIES BEFORE PROCEEDING WITH CONSTRUCTION.

NO.	REVISIONS	DATE	BY	B.M. ELEV.
1	ISSUED FOR ADDENDUM	13/12/10	RB	
0	ISSUED FOR TENDER	13/10/15	RB	



DESIGNED BY	RB	CHECKED BY	[Signature]
DRAWN BY	RB	APPROVED BY	[Signature]
HOR. SCALE:	AS NOTED	RELEASED FOR CONSTRUCTION BY:	
VERTICAL:	AS NOTED	DATE	2013-07-12



**THE CITY OF WINNIPEG PUBLIC WORKS DEPARTMENT**

PLESSIS ROAD TWINNING AND GRADE SEPARATION AT CN REDDITT SUBDIVISION CONTRACT 3

ELECTRICAL POWER AND INSTRUMENT SECTIONS

CITY DRAWING NUMBER U238-2014-2355  
SHEET 05 OF 09  
**E-0005**

