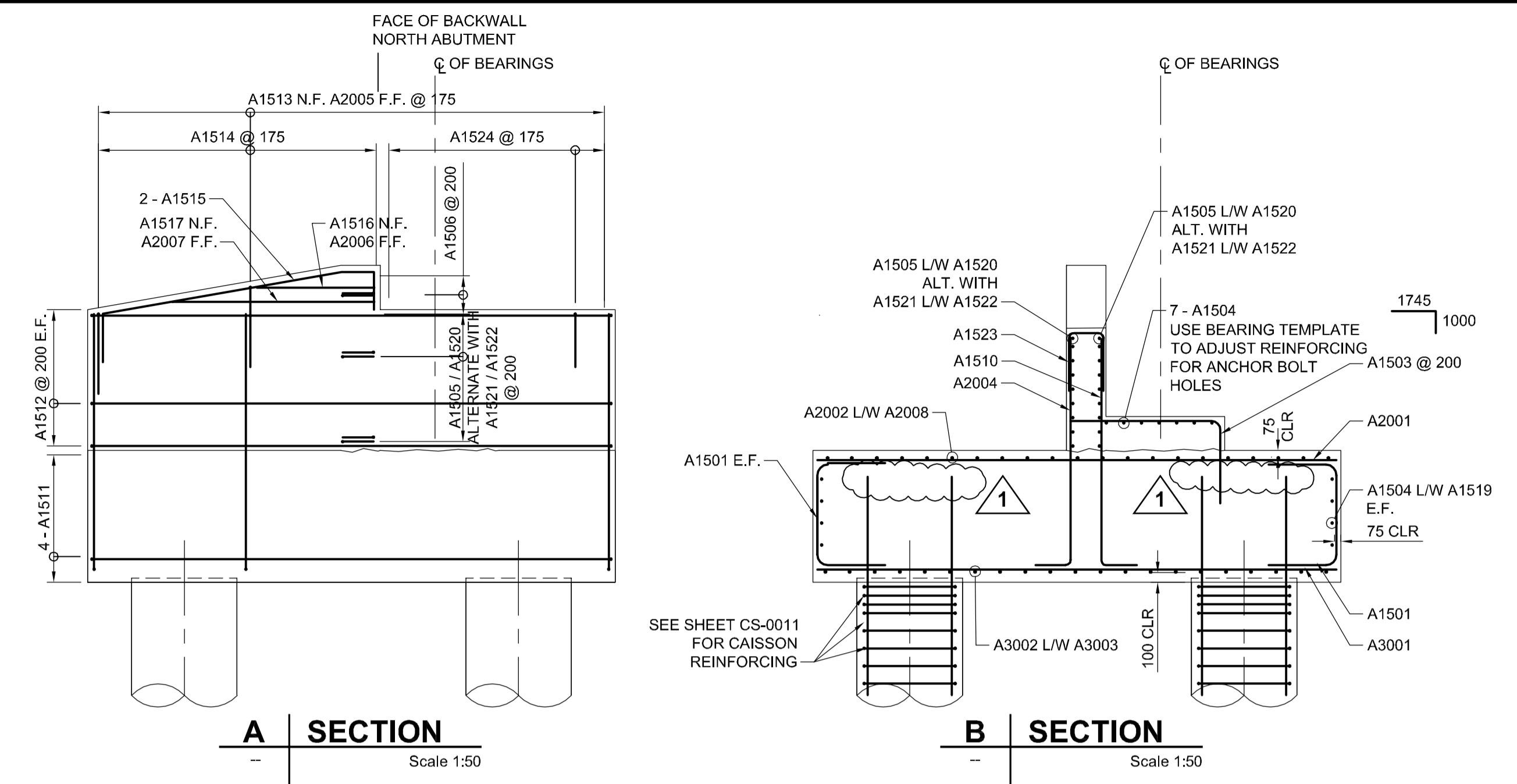
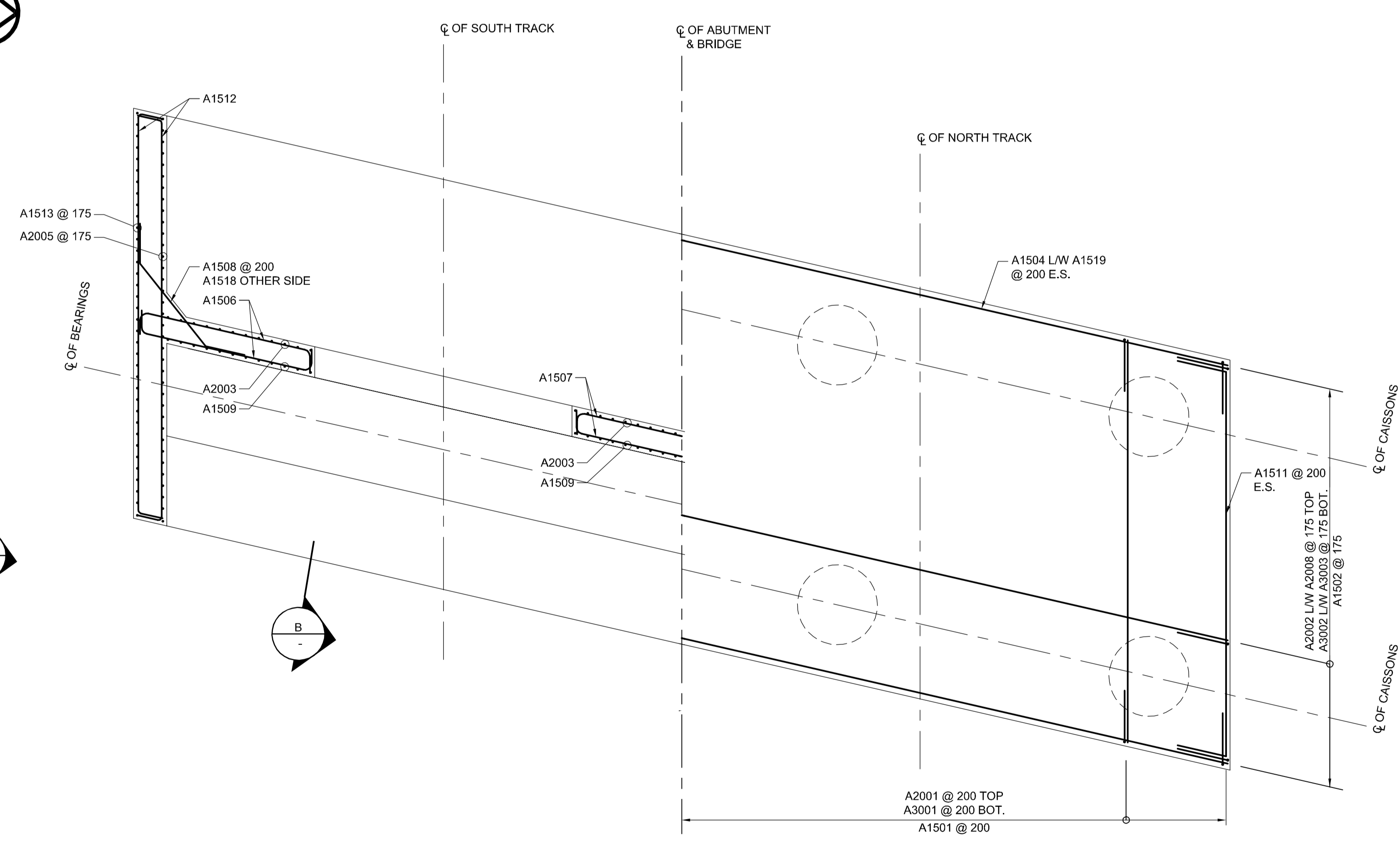
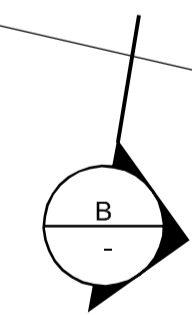
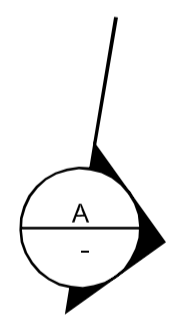
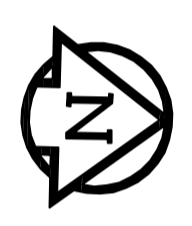


**ELEVATION - ABUTMENT**  
Scale 1:50



**A SECTION**  
Scale 1:50

**B SECTION**  
Scale 1:50



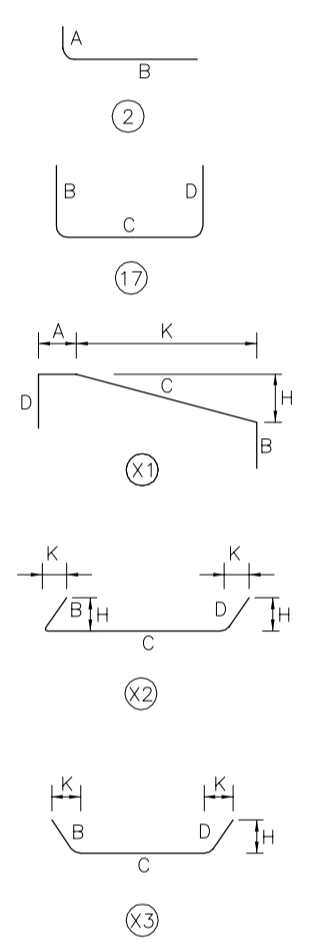
**PLAN - ABUTMENT**  
Scale 1:50

\* ABUTMENT SU1 SHOWN, ABUTMENT SU3 SIMILAR UNLESS NOTED



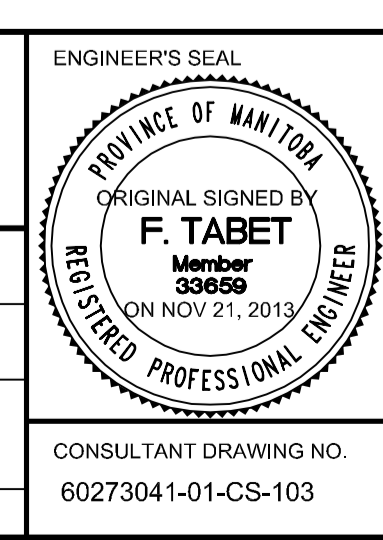
NOTE:  
1. CONTRACTOR TO ADJUST REINFORCING SPACING TO SUIT CAISSON DOWELS.

MARKS	NO BARS	SIZE	LENGTH	TYPE	A	B	C	D	H	K	SHAPE	MASS (kg)
<b>ONE ABUTMENT</b>												
A3001	83	30	6030	STR								2750.2
A3002	35	30	12000	STR								2307.9
A3003	35	30	6400	STR								1230.9
A2001	83	20	6030	STR								1178.7
A2002	35	20	12000	STR								989.1
A2003	42	20	3820	2	400	3420						377.8
A2004	40	20	3110	2	400	2710						293.0
A2005	72	20	3350	2	400	2950						568.0
A2006	2	20	1370	STR								6.5
A2007	2	20	2360	STR								11.1
A2008	35	20	5900	STR								486.3
A1501	166	15	2475	17		600	1275	600				645.0
A1502	70	15	2525	17		600	1325	600				277.5
A1503	78	15	2745	2	1000	1745						336.2
A1504	15	15	12000	STR								282.6
A1505	8	15	12000	X2			11680	320	312	72		150.7
A1506	16	15	3320	X2		320	2680	320	312	72		83.4
A1507	8	15	3920	X2		320	3280	320	312	72		49.2
A1508	9	15	2860	X3		600	1660	600	374	469		40.4
A1509	42	15	3820	2	400	3420						251.9
A1510	40	15	3110	2	400	2710						195.3
A1511	8	15	7200	X2		600	6000	600	585	135		90.4
A1512	36	15	6790	X2		370	6050	370	361	83		383.8
A1513	72	15	3350	2	400	2950						378.7
A1514	36	15	2620	17		1110	400	1110				148.1
A1515	4	15	5035	X1	380	600	2945	1110	490	2904		31.6
A1516	2	15	1370	STR								4.3
A1517	2	15	2360	STR								7.4
A1518	9	15	2543	X3		600	1343	600	469	374		35.9
A1519	15	15	5400	STR								127.2
A1520	8	15	6070	X2		320	5750		312	72		76.2
A1521	8	15	12000	X2		320	11680		312	72		150.7
A1522	8	15	6070	X2			5750	320	312	72		76.2
A1523	82	15	1550	17		600	350	600				199.5
A1524	32	15	1600	17		600	400	600				80.4
<b>DWG TOTAL WEIGHT (kg)</b>											<b>= 14302.1</b>	



<b>LOCATION APPROVED UNDERGROUND STRUCTURES</b>		<b>B.M. ELEV.</b>	
SUPV. U/G STRUCTURES COMMITTEE	DATE		
NOTE: LOCATION OF UNDERGROUND STRUCTURES AS SHOWN ARE BASED ON THE BEST INFORMATION AVAILABLE, BUT NO GUARANTEE IS GIVEN THAT THE GIVEN LOCATIONS ARE EXACT. CONFIRMATION OF EXISTENCE AND EXACT LOCATION OF ALL SERVICES MUST BE OBTAINED FROM THE INDIVIDUAL UTILITIES BEFORE PROCEEDING WITH CONSTRUCTION.			
NO.	ISSUED FOR	DATE	BY
1	ISSUED FOR ADDENDUM	2013/17/10	DJH
0	ISSUED FOR TENDER	2013/11/21	KC
NO.	REVISIONS	DATE	BY

<b>AECOM</b>	
DESIGNED BY: DKD	CHECKED BY: CD/FT
DRAWN BY: MSK	APPROVED BY: EBL
HOR. SCALE: AS NOTED	RELEASED FOR CONSTRUCTION BY:
VERTICAL: AS NOTED	DATE: 2013-06-04



BID OPPORTUNITY NO. 712-2013

**THE CITY OF WINNIPEG PUBLIC WORKS DEPARTMENT**

PLESSIS ROAD TWINNING AND GRADE SEPARATION AT CN REDDITT SUBDIVISION CONTRACT 3

SU1 & SU3 ABUTMENT REINFORCING

CITY DRAWING NUMBER U238-2014-2013  
SHEET 13 OF 37  
**CS-0013**