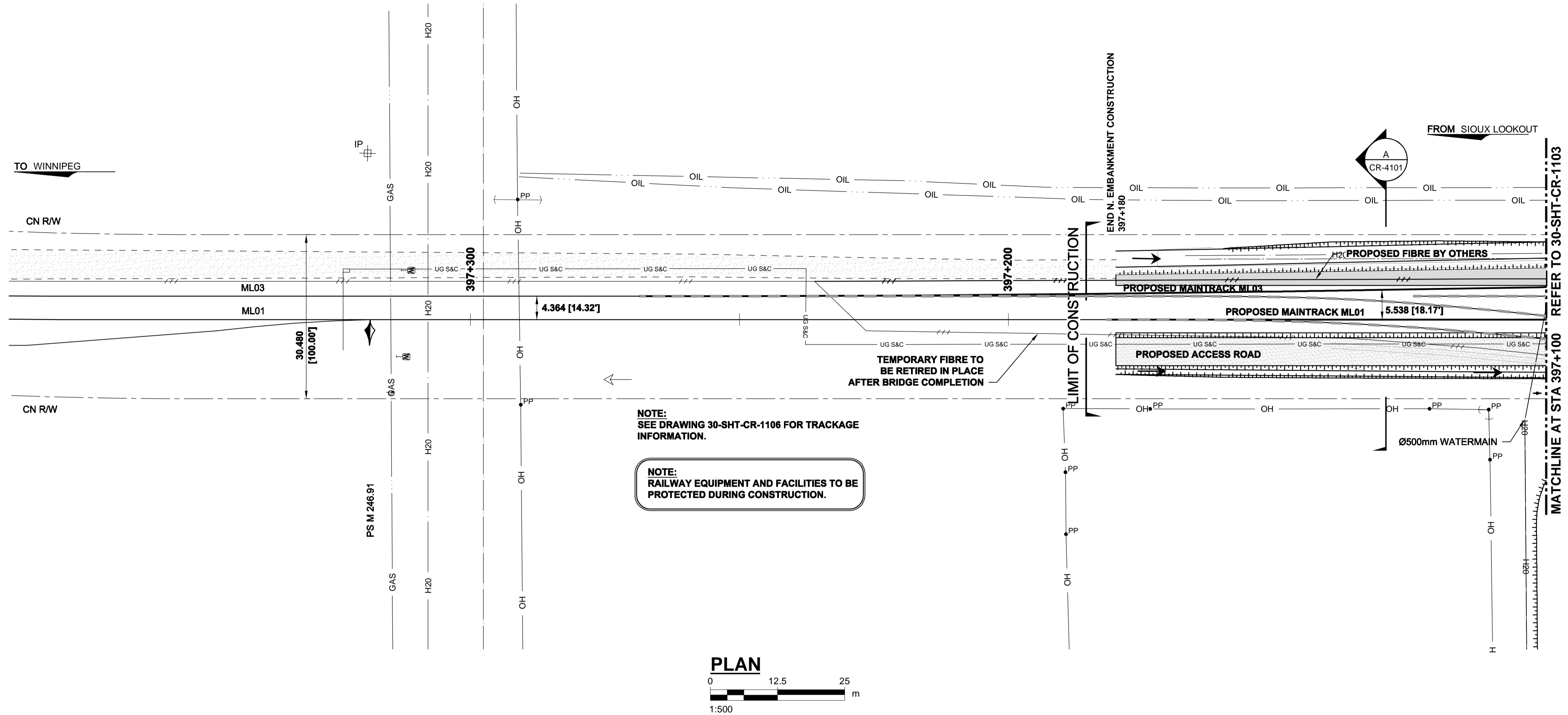
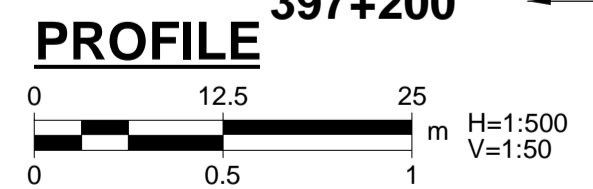
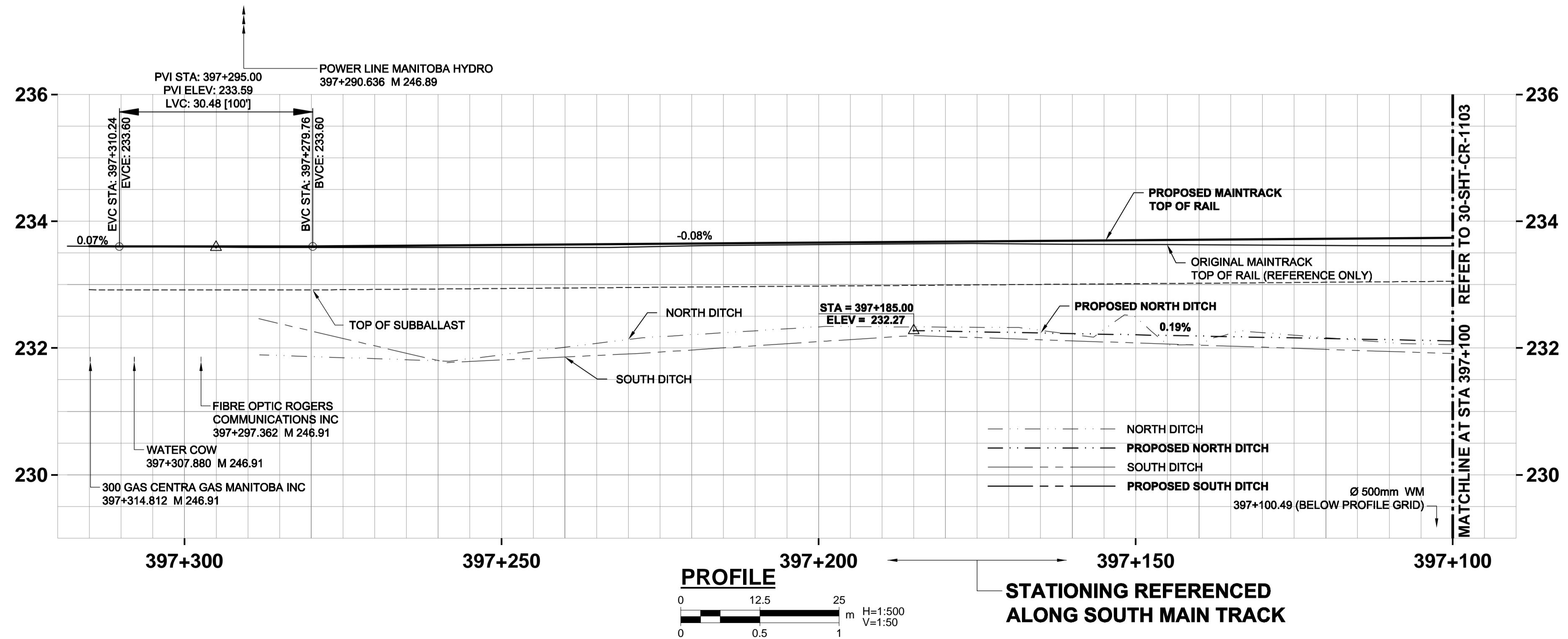
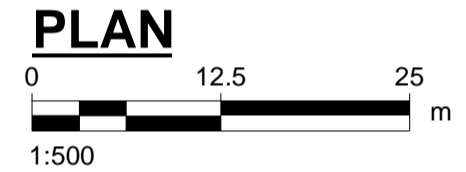


KEY PLAN



NOTE:
SEE DRAWING 30-SHT-CR-1106 FOR TRACKAGE
INFORMATION.

NOTE:
RAILWAY EQUIPMENT AND FACILITIES TO BE
PROTECTED DURING CONSTRUCTION.



STATIONING REFERENCED
ALONG SOUTH MAIN TRACK

APEGM
Certificate of Authorization
AECOM Canada Ltd.
No. 4671 Date: 2014/01/22
BID OPPORTUNITY NO. 712-2013

LOCATION APPROVED
UNDERGROUND STRUCTURES

SUPV. U/G STRUCTURES COMMITTEE	DATE

NOTE:
LOCATION OF UNDERGROUND STRUCTURES AS SHOWN ARE BASED ON THE BEST INFORMATION AVAILABLE. BUT NO GUARANTEE IS GIVEN THAT ALL EXISTING UTILITIES ARE SHOWN OR THAT THE GIVEN LOCATIONS ARE EXACT. CONFIRMATION OF EXISTENCE AND EXACT LOCATION OF ALL SERVICES MUST BE OBTAINED FROM THE INDIVIDUAL UTILITIES BEFORE PROCEEDING WITH CONSTRUCTION.

B.M. ELEV.			

NO.	REVISIONS	DATE	BY
2	Issued For Addendum	14/01/22	RCP
1	Issued For Addendum	13/12/10	RCP
0	Issued For Tender	13/10/15	RCP

AECOM

DESIGNED BY	BRP	CHECKED BY	BJM

DRAWN BY	WD	APPROVED BY	RCP

HOR. SCALE: 1:500
VERTICAL: 1:50

DATE	2014/01/22	DATE	2014/01/22

ENGINEER'S SEAL

CONSULTANT DRAWING NO.
30-SHT-CR-1102

THE CITY OF WINNIPEG
PUBLIC WORKS DEPARTMENT

PLESSIS ROAD TWINNING AND GRADE SEPARATION AT CN REDDITT SUBDIVISION CONTRACT 3

SHOOFLY REMOVAL AND FINAL CONFIGURATION
PLAN AND PROFILE
Sta. 397+100 to Sta. 397+320

CITY DRAWING NUMBER
U238-2014-2202
SHEET 02 OF 14
CR-1102