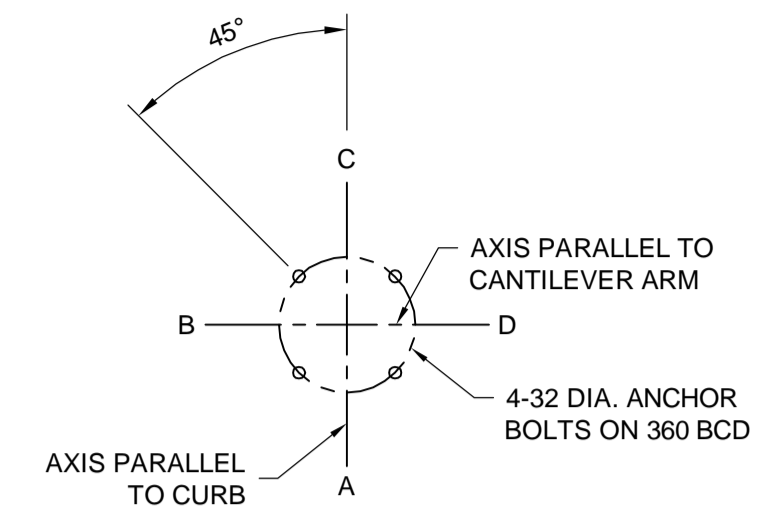
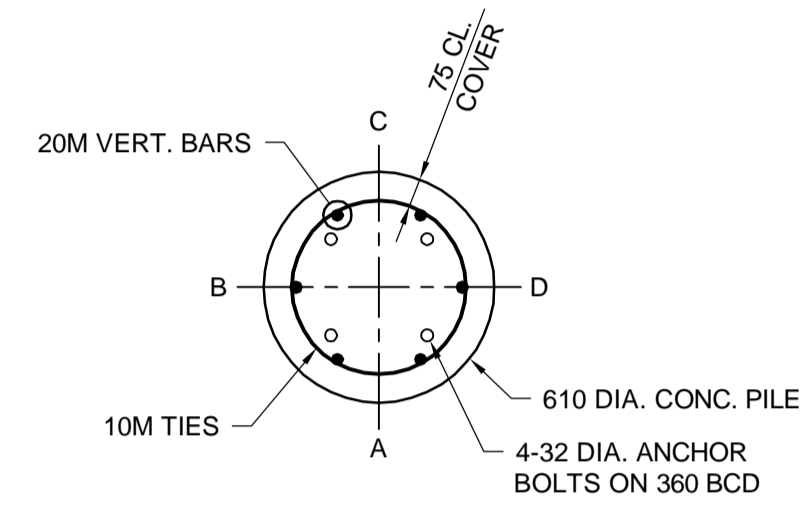


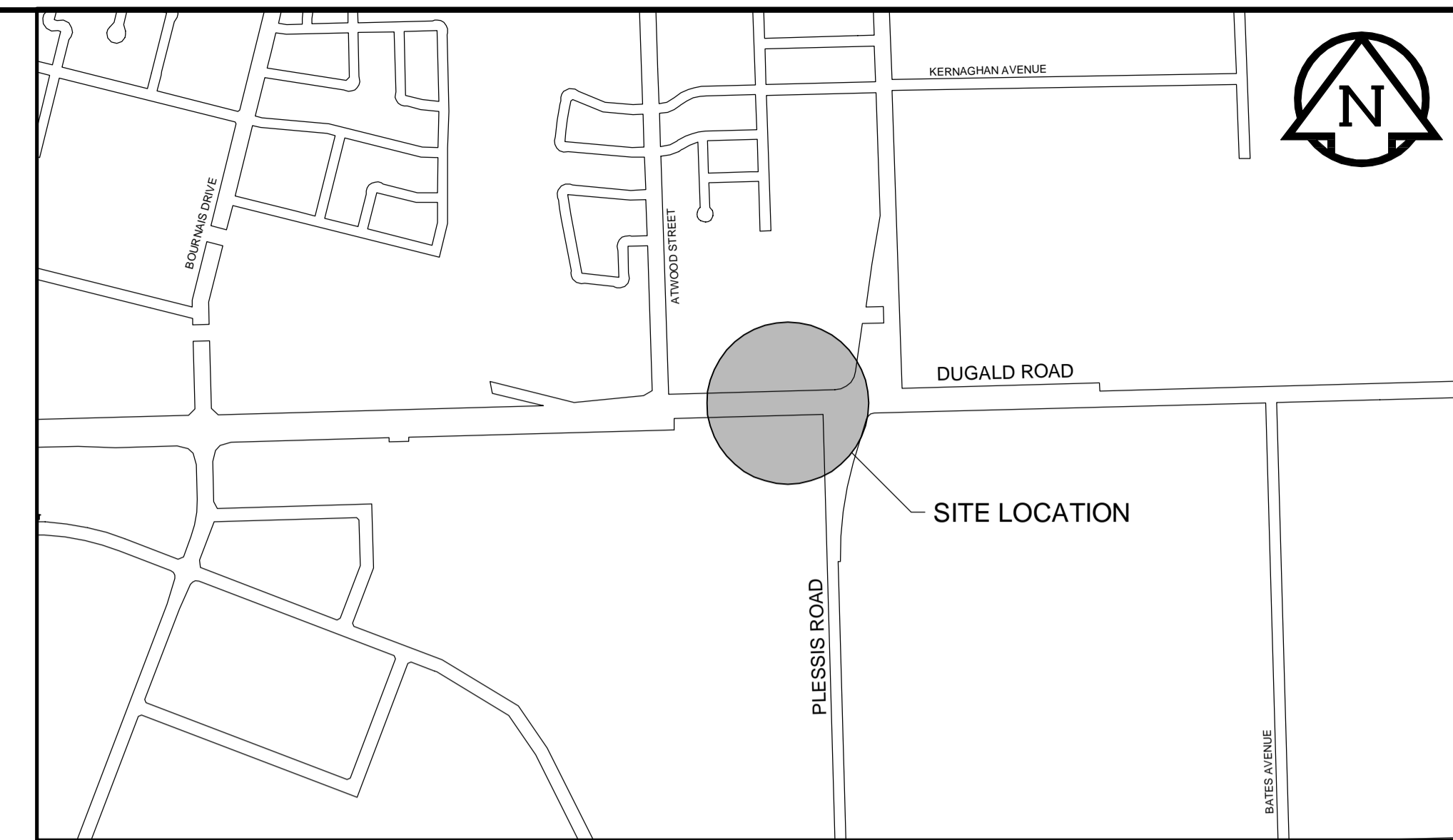
LOCATION PLAN



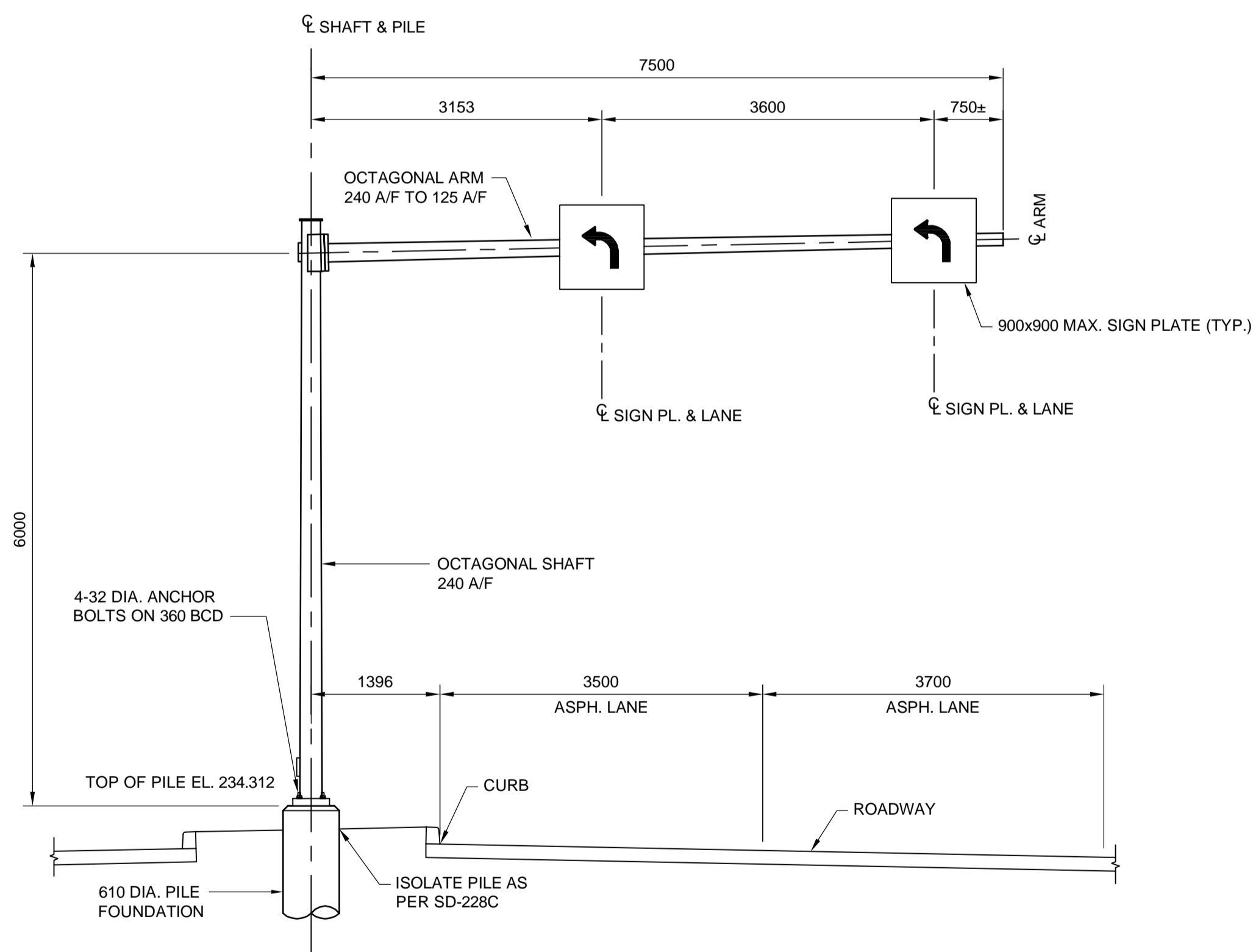
ANCHOR BOLT LAYOUT



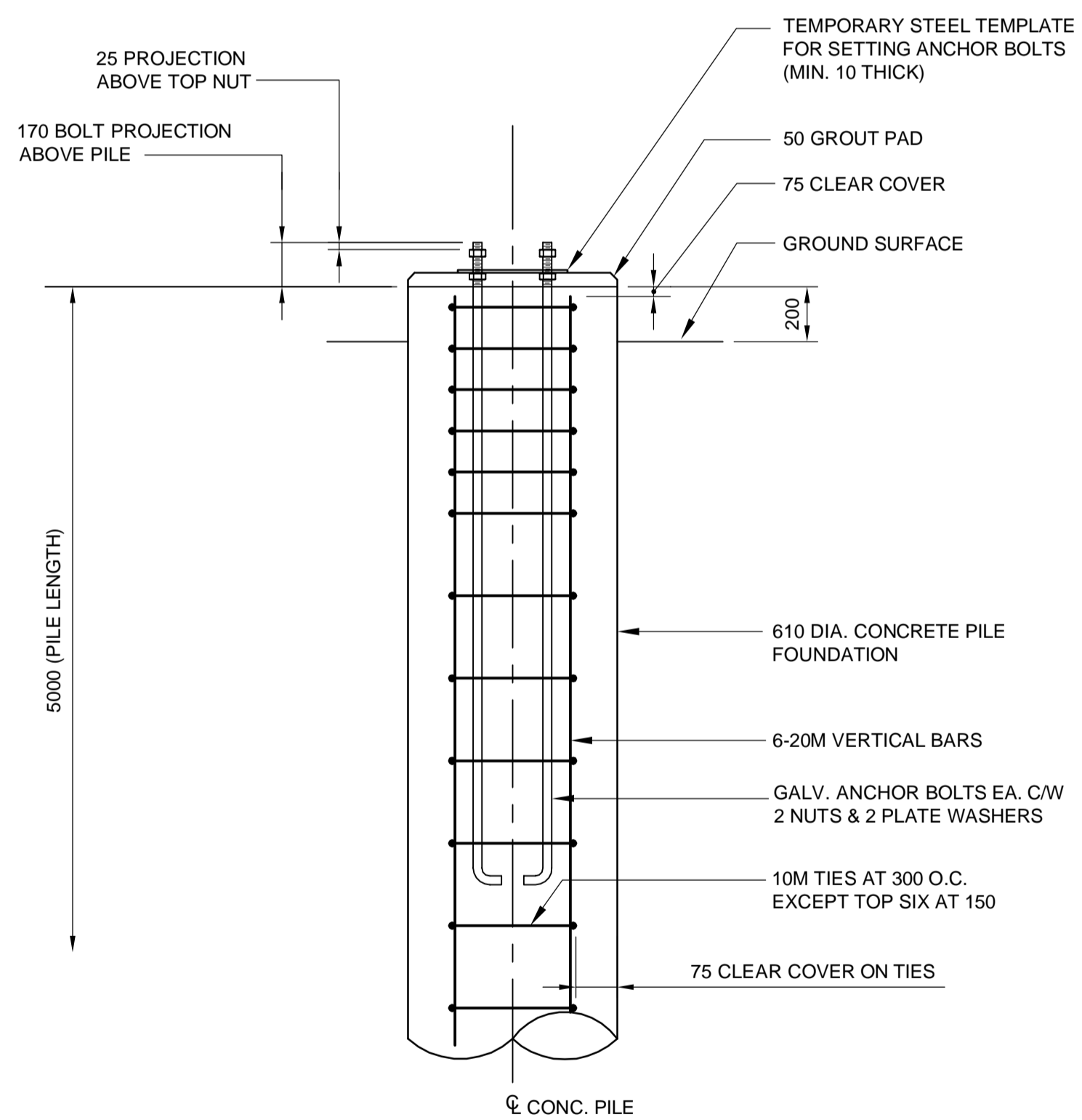
PLAN



KEY PLAN



SITE ELEVATION - LOOKING EAST
1:50 (CRASH PROTECTION NOT SHOWN FOR CLARITY)



ELEVATION

CONCRETE PILE FOUNDATION DETAIL
1:20

PILE CONSTRUCTION NOTES

1. REINFORCING STEEL
 - CSA G30.18 400W
 - VERTICAL BARS FULL LENGTH OF PILE
 - HOT DIP GALVANIZED
2. ANCHORS BOLTS
 - ASTM F1554 GR. 55 (380 MPa)
 - 4-32 DIA. x 1500 LONG + 150 HOOK
 - EACH BOLT C/W 2 NUTS & 2 WASHERS
 - TOP 300 THREADED
 - HOT DIP GALVANIZED FULL LENGTH
 - FOLLOWING INSTALLATION OF THE STEEL STRUCTURE, TIGHTEN THE LOWER LEVELING NUTS AND UPPER ANCHORING NUTS TO A SNUG-TIGHT CONDITION FOLLOWED BY 1/3 NUT ROTATION (+20°/-0°) OF THE UPPER ANCHOR NUTS.
3. ANCHOR BOLTS SHALL BE ALIGNED WITH A TEMPORARY STEEL TEMPLATE, PLACEMENT OF ANCHOR BOLTS AND CONCRETE WITHOUT THE TEMPLATE WILL NOT BE PERMITTED.
4. TOP OF PILE SHALL BE FORMED WITH A TUBULAR FORM (SONOTUBE) AS FOLLOWS:
 - a) FOR BORED PILES, 1.0 m BELOW FINAL GRADE
 - ii) FOR HYDRO-JET EXCAVATED PILES, 1.5 m BELOW FINAL GRADE
5. CONTRACTOR SHALL REMOVE THE BASE TEMPLATE, NUTS AND FORM, FOLLOWING A MINIMUM 24 HOUR CONCRETE CURING PERIOD.
6. CONCRETE MIX DESIGN
 PROPORTIONING OF FINE AGGREGATE, COARSE AGGREGATE, CEMENT, WATER, AND AIR ENTRAINING AGENT SHALL BE SUCH AS YIELD CONCRETE HAVING THE REQUIRED STRENGTH AND WORKABILITY AS FOLLOWS:
 - i) CLASS OF EXPOSURE: S-1
 - ii) COMPRESSIVE STRENGTH AT 56 DAYS = 35 MPa
 - iii) WATER/CEMENTING MATERIALS RATIO = 0.4
 - iv) AIR CONTENT: CATEGORY 2 PER TABLE 4 OF CSA A23.1-09 (4-7%)
 - v) CEMENT - TYPE HS OR Hsb HIGH SULPHATE RESISTANT

2013-07-05

BID OPPORTUNITY NO. 712-2013



B.M. ELEV.					
DESIGNED BY	CDW	CHECKED BY	SSR		
DRAWN BY	JLD	APPROVED BY	DPK		
HOR. SCALE:	AS NOTED	RELEASED FOR CONSTRUCTION BY:			
NO. REVISIONS		DATE	2013/11/21		

ENGINEER'S SEAL
 PROVINCE OF MANITOBA
 C.D. WARD
 2013/11/21
 Member
 24456
 REGISTERED PROFESSIONAL ENGINEER

THE CITY OF WINNIPEG PUBLIC WORKS DEPARTMENT

PLESSIS ROAD TWINNING AND GRADE SEPARATION AT CN REDDITT SUBDIVISION CONTRACT 3

S776 - DUGALD ROAD E.B. WEST OF PLESSIS ROAD

CITY DRAWING NUMBER S776-2013-01
 SHEET 64 OF 66

CT-0064