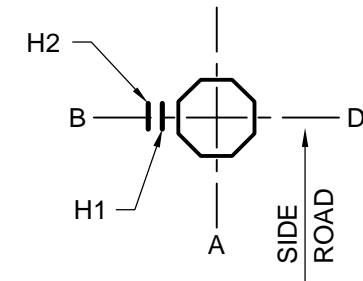
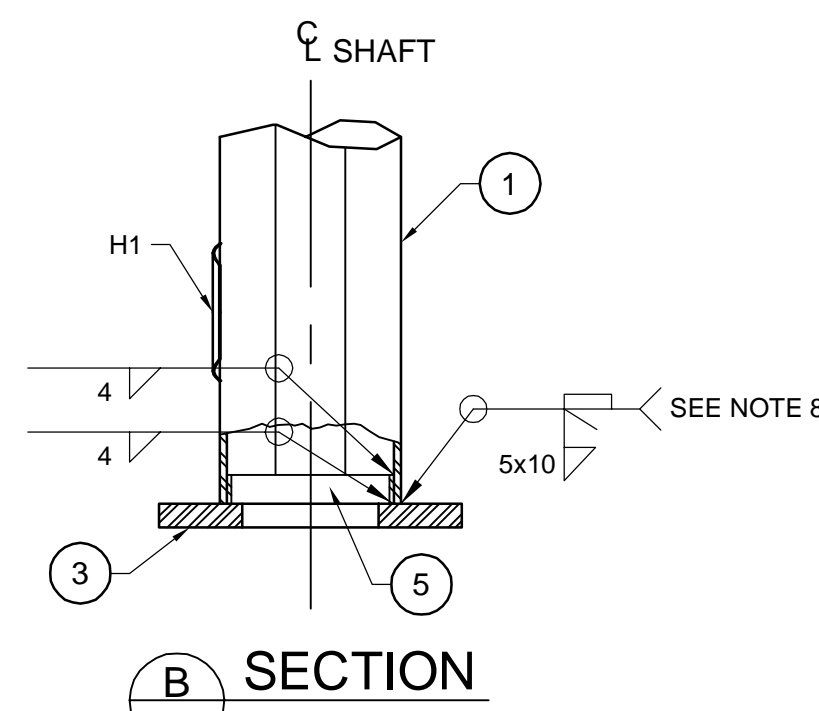


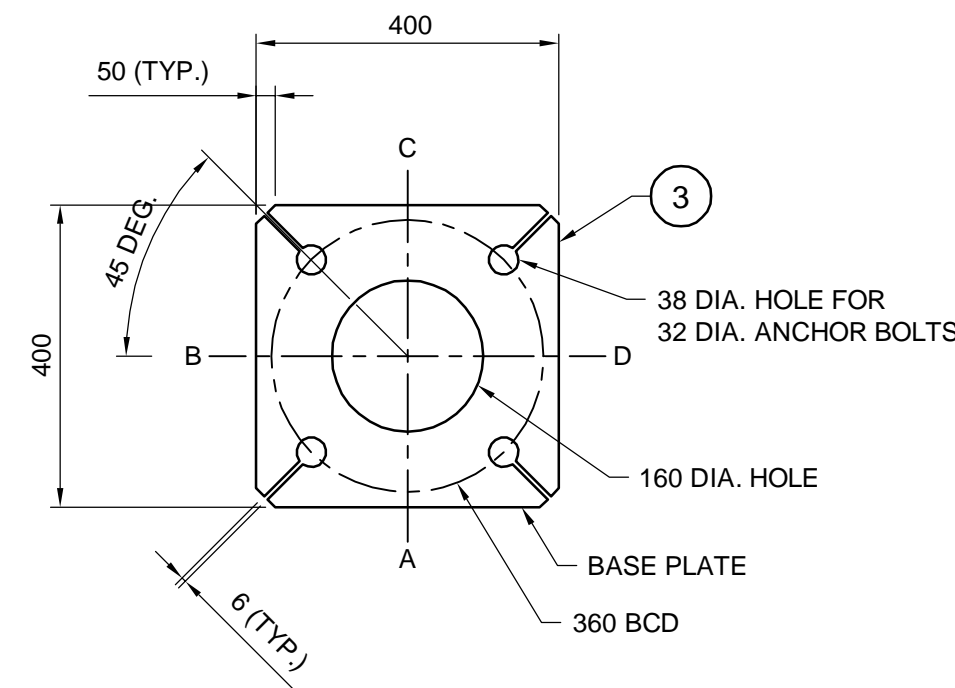
ELEVATION



ORIENTATION



SECTION B - B



BASE PLATE DETAIL

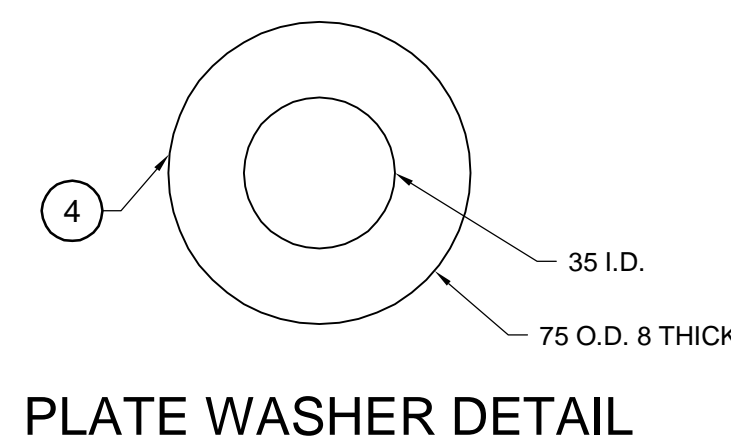
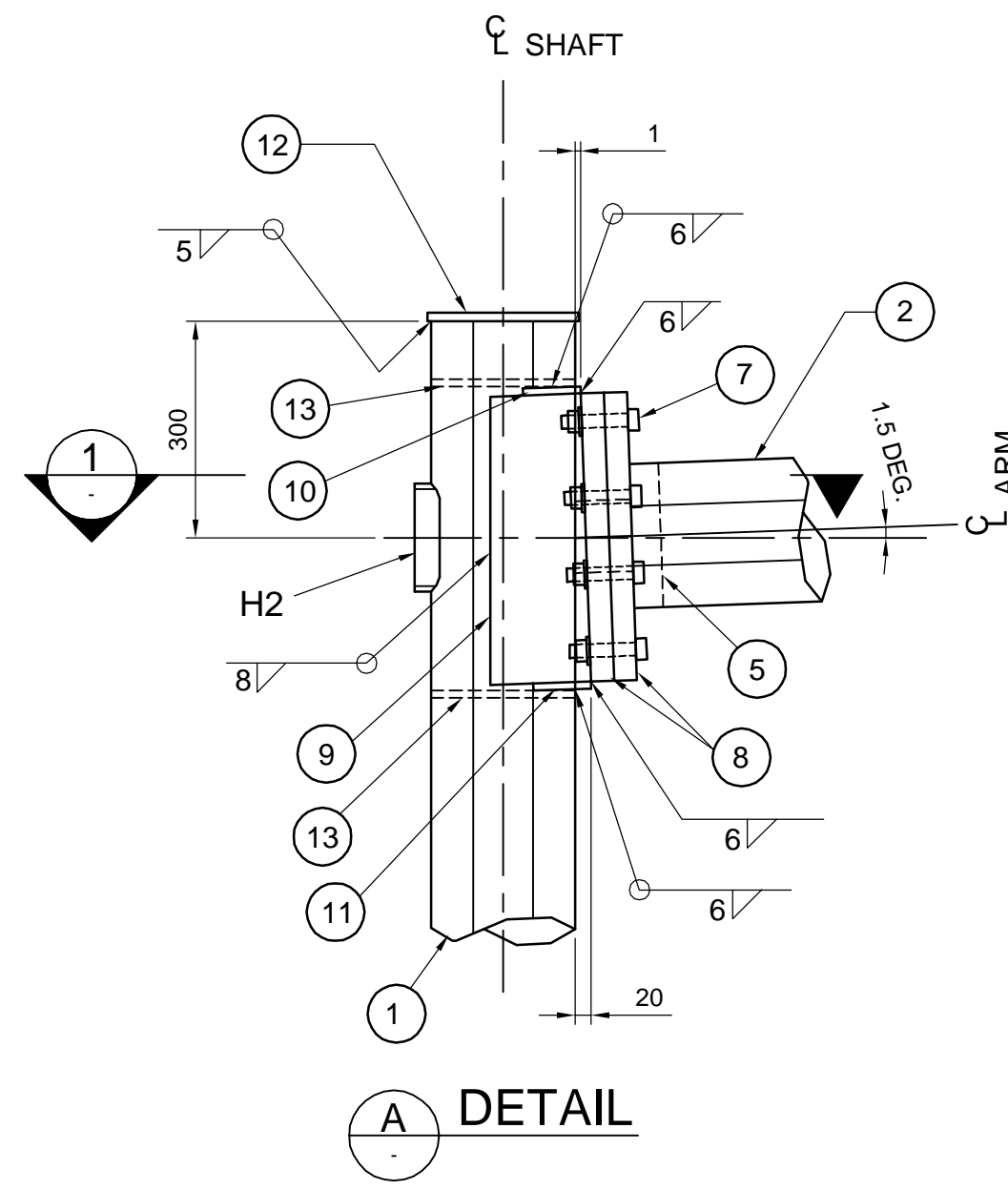
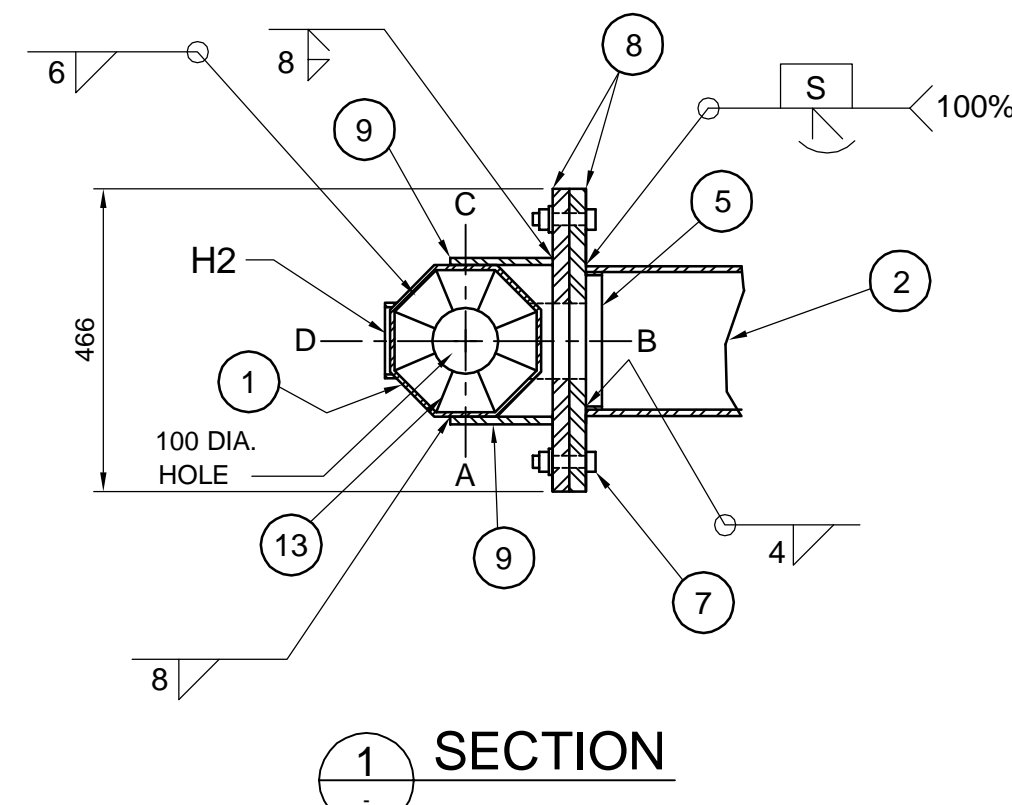


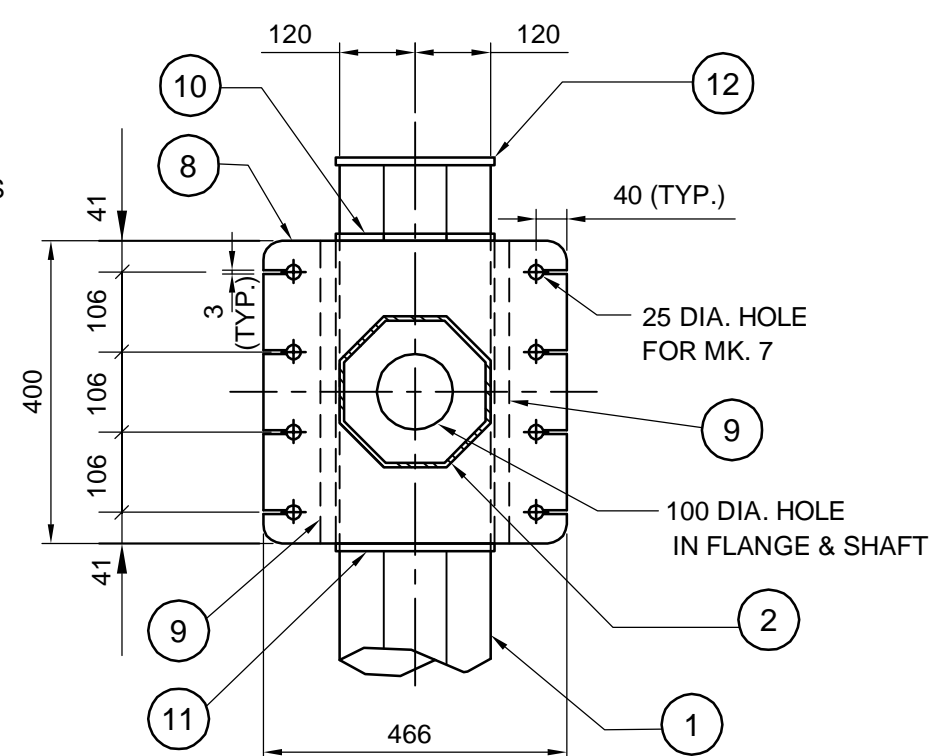
PLATE WASHER DETAIL



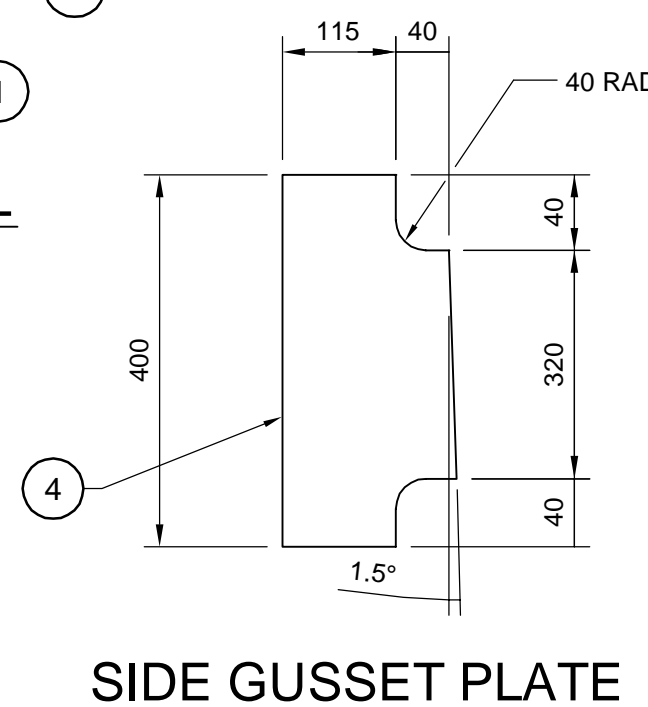
DETAIL



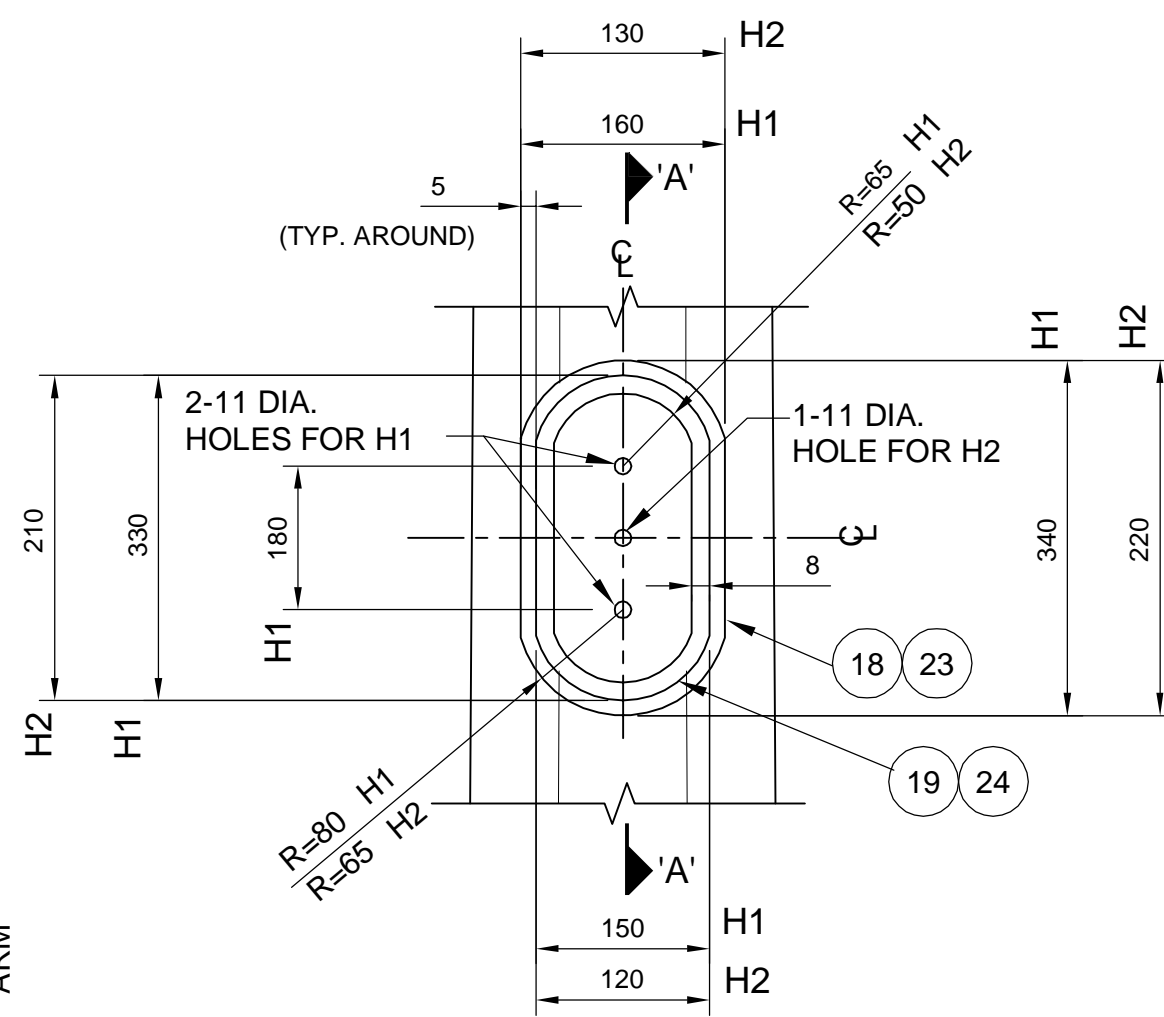
SECTION 1 - 1



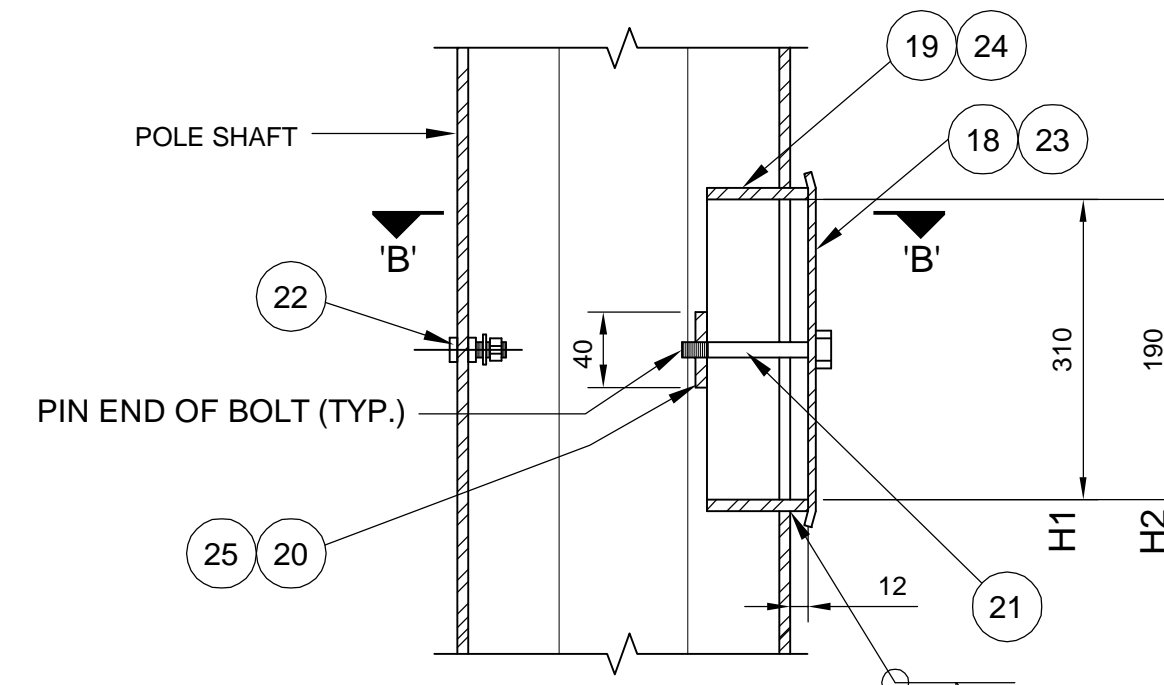
FLANGE PLATE DETAIL



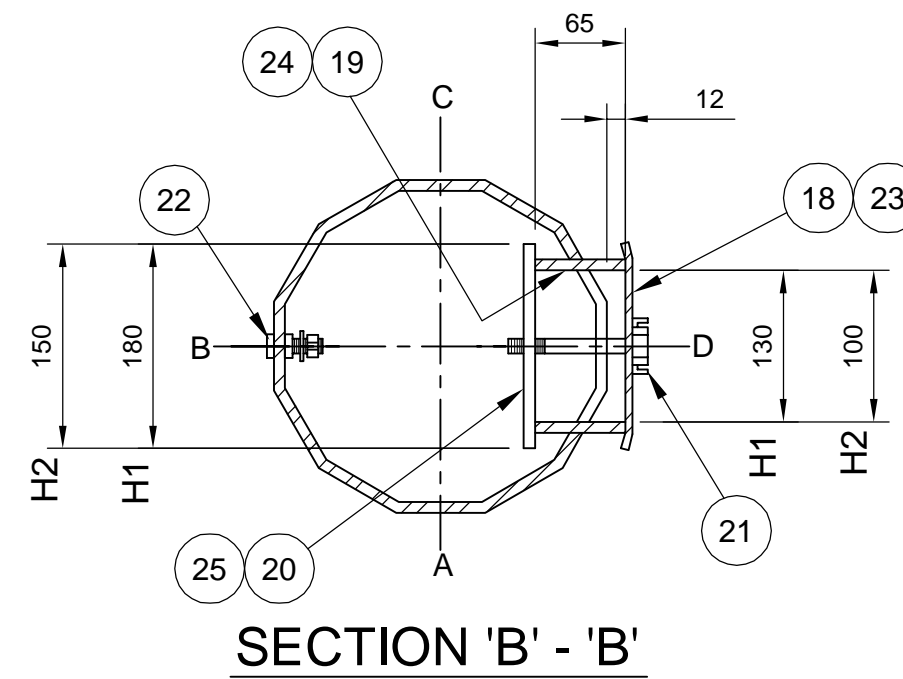
SIDE GUSSET PLATE



FRONT ELEVATION

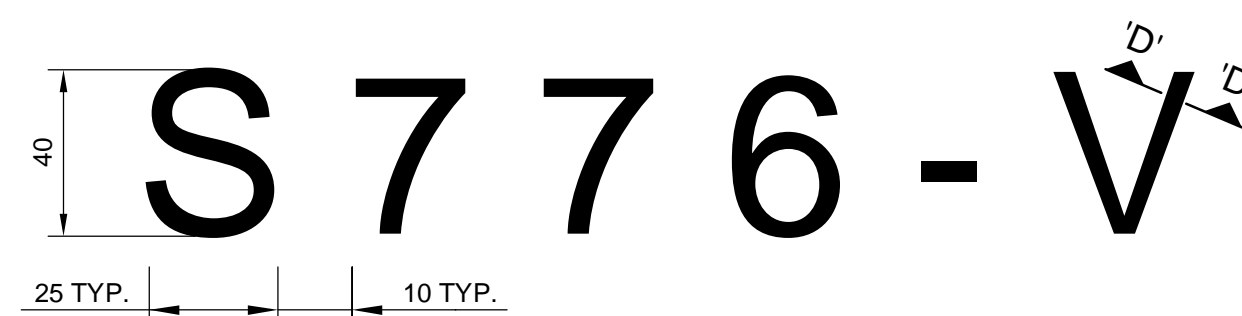


SECTION 'A' - 'A'

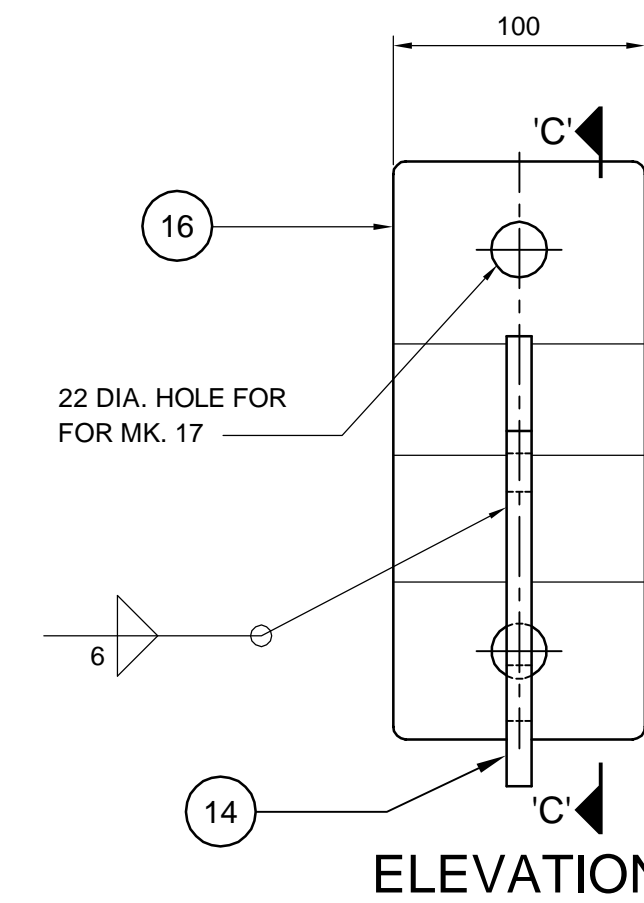


SECTION 'B' - 'B'

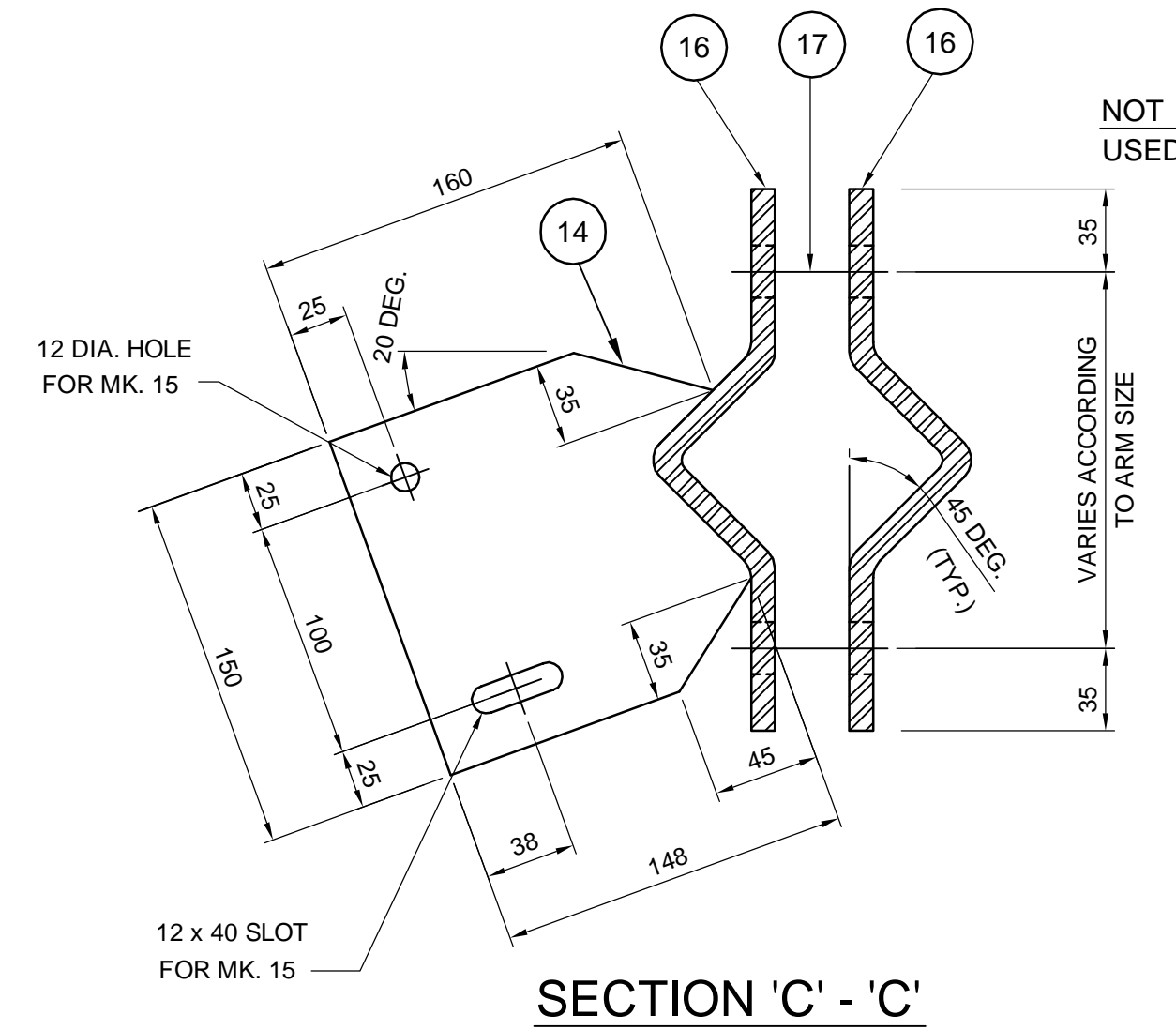
HANDHOLE - MARK H1 & H2



STRUCTURE IDENTIFICATION NUMBER SIZE

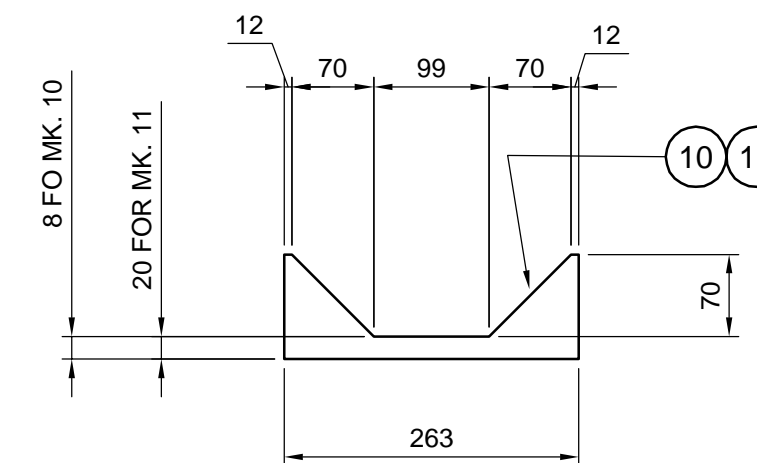


ELEVATION

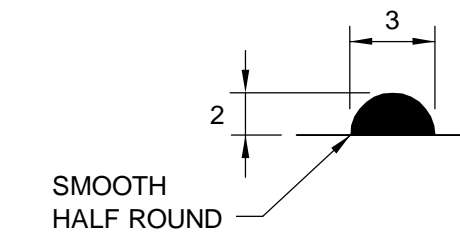


SECTION 'C' - 'C'

SIGN MOUNTING BRACKET DETAIL FOR SIGN BOXES (NONE REQUIRED)



GUSSET PLATE MARK 10 & 11



SECTION 'D' - 'D'

BILL OF MATERIALS		
MK.	QTY.	DESCRIPTION
1	1	OCTAGONAL SHAFT 240 A/F TO 240 A/F x 4.763
2	1	OCTAGONAL ARM 240 A/F TO 125 A/F x 4.763
3	1	BASE PLATE 38 THICK
4	8	PLATE WASHER 8 THICK
5	2	BACKUP STRIP 40 x 4.763
6	1	END PLATE 125 A/F OCTAGONAL 6 THICK
* 7	8	22 DIA. A325M BOLTS TYPE 1 GALVANIZED
8	2	FLANGE PLATE 400 x 466 x 32
9	2	SIDE GUSSET PLATE 20 x 400 x 135
10	1	TOP GUSSET PLATE 10 THICK
11	1	BOTTOM GUSSET PLATE 10 THICK
12	1	COVER PLATE 210 DIA x 6.35 THICK
13	2	OCTAGONAL INTERIOR GUSSET PLATE 6.35 THICK
SIGN MOUNTING BRACKETS (NONE REQ'D.)		
14	4	BRACKET PLATE 10 THICK
* 15	8	10 DIA. BOLTS S/S (TYPE 316)
16	8	CLAMP PLATE 10 THICK
* 17	8	20 DIA. BOLT S/S (TYPE 316)
HANDHOLE MARK H1		
18	1	COVER PLATE 160 x 340 x 3.04 THICK (A569)
19	1	REINFORCING RING 8 x 65 x 830
* 20	2	CLAMP BAR 6 x 40 x 180
* 21	2	10 DIA. x 140 BOLT S/S (TYPE 316)
* 22	1	GROUND STUD ASSEMBLY 10 DIA. x 40, S/S
HANDHOLE MARK H2		
23	1	COVER PLATE 130 x 220 x 3.04 THICK (A569)
24	1	REINFORCING RING 8 x 65 x 555
* 25	1	CLAMP BAR 6 x 40 x 150
* 21	1	10 DIA. x 140 BOLT S/S (TYPE 316)
* 22	1	GROUND STUD ASSEMBLY 10 DIA. x 40, S/S

- *NOTES:**
- MARK NO. 7, 15 & 17 C/W NUT AND WASHER.
 - MARK NO. 20 & 25 C/W 8-DIA. PUNCHED 10 N.C. TAPPED AT THE CENTER OF PLATE.
 - MARK NO. 21 C/W CUP WASHER.
 - MARK NO. 22 C/W 2-10 DIA. HEX NUT, 2-TERMINAL WASHER. & 1-LOCKWASHER

- GENERAL NOTES**
- DESIGN DATA**
AASHTO STANDARD SPECIFICATIONS FOR STRUCTURAL SUPPORTS FOR HIGHWAY SIGNS, LUMINAIRES, AND TRAFFIC SIGNALS, 6TH EDITION, 2013, PLUS INTERIMS.
DESIGN WIND LOAD = 1.5 kPa
DESIGN ICE LOAD = 0.15 kPa
FATIGUE CATEGORY II CONSIDERING NATURAL WIND GUSTS, TRUCK INDUCED GUSTS, AND GALLOPING.
 - ALL STEEL PLATES SHALL BE CSA G40.21 - 300W STRUCTURAL STEEL.
 - ALL STEEL PLATES EXCEPT STAINLESS STEEL AND ALUMINUM SHALL BE HOT-DIP GALVANIZED IN ACCORDANCE WITH ASTM A123/A123M TO A MIN. NET RETENTION OF 610 g/m²
 - SIGNS**
2 SIGN PLATES, MAXIMUM SIZE 900 x 900 mm EACH. SUPPLIED AND INSTALLED BY THE CITY OF WINNIPEG TRAFFIC SERVICES BRANCH.
 - INSTALL HOLES IN THE GUSSET PLATES FOR DRAINAGE DURING GALVANIZING AS DETAILED.
 - PROVIDE "RAISED" IDENTIFICATION NO. WITH WELDING ELECTRODE FOR THE SIGN STRUCTURE.
 - GRIND ALL SHARP POINTS AND EDGES.
 - EXTERIOR WELD JOINING SHAFT TO TRANSVERSE PLATE SHALL BE AN UNEQUAL LEG COMPLETE PENETRATION WELD WITH THE LONG LEG OF THE WELD ALONG THE SHAFT TERMINATING AT 30° FROM THE SHAFT SURFACE.

BID OPPORTUNITY NO. 712-2013

DESIGNED BY	CDW	CHECKED BY	SSR	PLESSIS ROAD TWINNING AND GRADE SEPARATION AT CN REDDITT SUBDIVISION CONTRACT 3	
DRAWN BY	JLD	APPROVED BY	DPK	CITY DRAWING NUMBER S776-2013-02	
HOR. SCALE: AS NOTED		RELEASED FOR CONSTRUCTION BY:		SHEET 65 OF 66	
VERTICAL:		DATE		CONSULTANT DRAWING NO. 12-6576-CT-0065	
A	ISSUED FOR TENDER	2013/11/21	TJP	S776 - FABRICATION DETAILS	
NO.	REVISIONS	DATE	BY	CT-0065	

2013-07-05

