

- ABUTMENT NOTES:**
1. FOR GENERAL NOTES SEE SHEET CS-0001
  2. FOR GEOTECHNICAL NOTES SEE SHEET CS-0002
  3. FIELD CONFIRM ALL DIMENSIONS RELATED TO THE EXISTING STRUCTURES
  4. RESOLVE WITH CONTRACT ADMINISTRATOR ALL DISCREPANCIES PRIOR TO START OF CONSTRUCTION
  5. REAR FACES OF ABUTMENT AND WINGWALL SHALL HAVE 2 COATS BAKOR-700-01, OR APPROVED EQUAL, DAMPPROOFING APPLIED.
  6. BACKFILL MATERIAL SHALL BE TYPE 1 AS PER AREMA 2013 CHAPTER 8 CLAUSE 5.2.5
  7. ALL EXPOSED EDGES SHALL BE GIVEN 20 X 20mm CHAMFERS

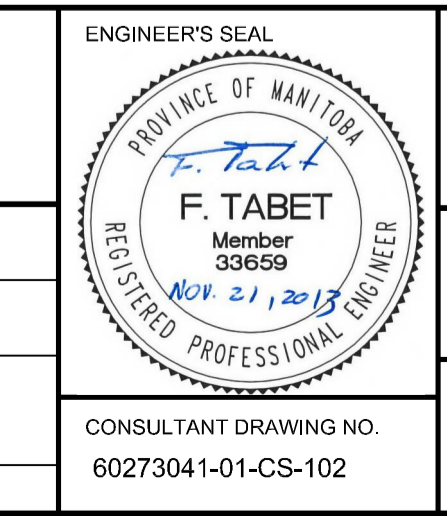
\* ABUTMENT SU1 SHOWN, ABUTMENT SU3 SIMILAR UNLESS NOTED



LOCATION APPROVED UNDERGROUND STRUCTURES	
SUPV. U/G STRUCTURES COMMITTEE	DATE
NOTE: LOCATION OF UNDERGROUND STRUCTURES AS SHOWN ARE BASED ON THE BEST INFORMATION AVAILABLE, BUT NO GUARANTEE IS GIVEN THAT ALL EXISTING UTILITIES ARE SHOWN OR THAT THE GIVEN LOCATIONS ARE EXACT. CONFIRMATION OF EXISTENCE AND EXACT LOCATION OF ALL SERVICES MUST BE OBTAINED FROM THE INDIVIDUAL UTILITIES BEFORE PROCEEDING WITH CONSTRUCTION.	

B.M. ELEV.	
NO.	REVISIONS
DATE	BY
0	ISSUED FOR TENDER
2013/11/21	KC

<b>AECOM</b>	
DESIGNED BY	DKD
CHECKED BY	CD/FT
DRAWN BY	DJH
APPROVED BY	EBL
HOR. SCALE:	AS NOTED
VERTICAL:	AS NOTED
DATE	2013-06-04
RELEASED FOR CONSTRUCTION BY:	DATE



**THE CITY OF WINNIPEG PUBLIC WORKS DEPARTMENT**

PLESSIS ROAD TWINNING AND GRADE SEPARATION AT CN REDDITT SUBDIVISION CONTRACT 3

SU1 & SU3 ABUTMENT CONCRETE

CITY DRAWING NUMBER U238-2014-2012  
SHEET 12 OF 37

CS-0012