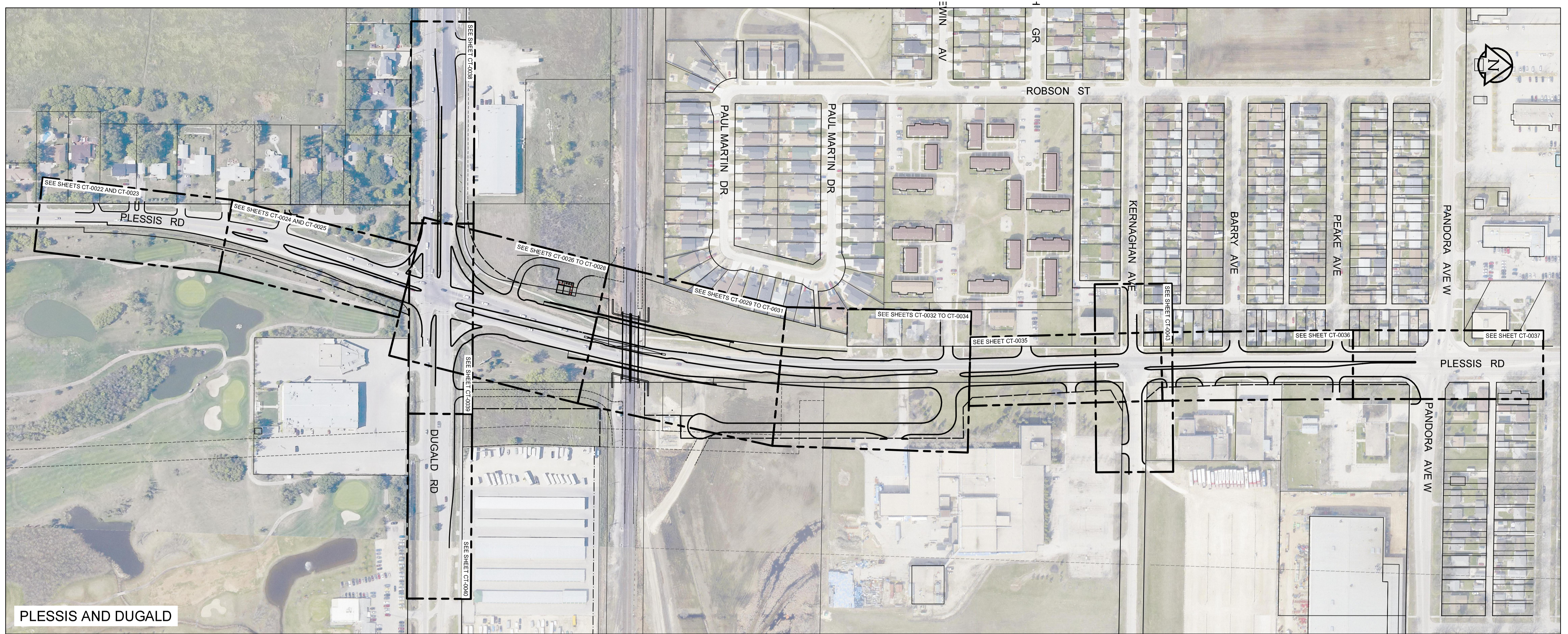
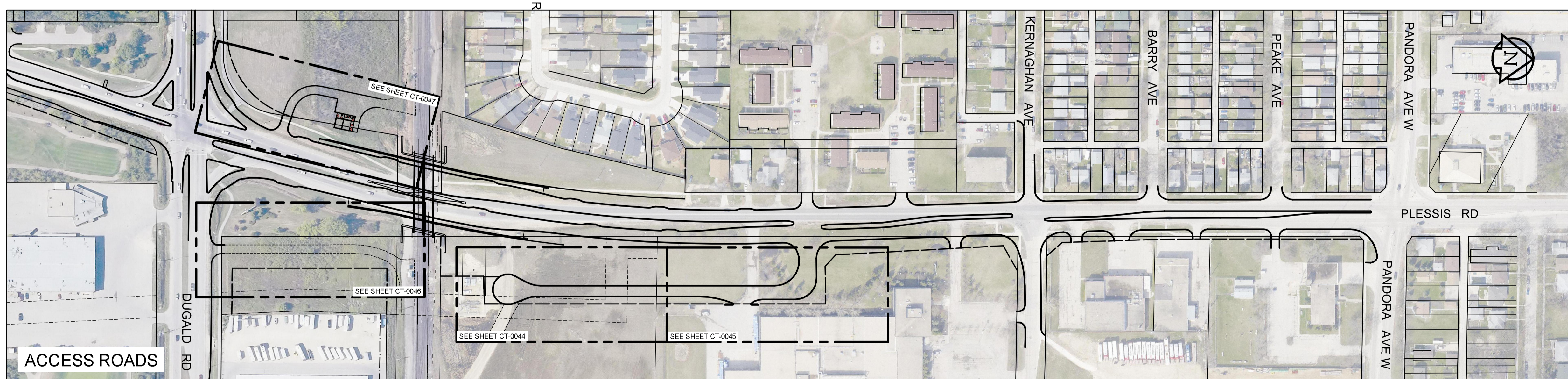


2013-05-17



PLESSIS AND DUGALD



ACCESS ROADS

APEGM
 Certificate of Authorization
Dillon Consulting Limited (MB)
 No. 1789 Date: 2013/11/21

BID OPPORTUNITY NO. 712-2013

150 WM	WATERMAIN	150 WM	HYDRO	HYDRO	150 WM	WATERMAIN	150 WM
⊕	HYDRANT	⊕	MTS	MTS	⊕	HYDRANT	⊕
⊗	VALVE	⊗			⊗	VALVE	⊗
300 LDS	LAND DRAINAGE SEWER	300 LDS			300 LDS	LAND DRAINAGE SEWER	300 LDS
250 WWS	WASTE WATER SEWER	250 WWS			250 WWS	WASTE WATER SEWER	250 WWS
○	MANHOLE	●			○	MANHOLE	○
□	CATCH BASIN	■			□	CATCH BASIN	□
▽	CURB INLET	▲			▽	CURB INLET	▽
+	JUNCTIONS	+			+	JUNCTIONS	+
—	CULVERT	—			—	CULVERT	—
100 GAS	GAS	100 GAS			100 GAS	GAS	100 GAS
EXISTING	LEGEND-PLAN	PROPOSED	EXISTING	LEGEND-PLAN	PROPOSED	EXISTING	LEGEND-PROFILE

LOCATION APPROVED UNDERGROUND STRUCTURES
 SUPV. U/G STRUCTURES COMMITTEE DATE
 NOTE:
 LOCATION OF UNDERGROUND STRUCTURES AS SHOWN ARE BASED ON THE BEST INFORMATION AVAILABLE, BUT NO GUARANTEE IS GIVEN THAT ALL EXISTING UTILITIES ARE SHOWN OR THAT THE GIVEN LOCATIONS ARE EXACT. CONFIRMATION OF EXISTENCE AND EXACT LOCATION OF ALL SERVICES MUST BE OBTAINED FROM THE INDIVIDUAL UTILITIES BEFORE PROCEEDING WITH CONSTRUCTION.

B.M. ELEV.			
0	ISSUED FOR TENDER	2013/11/21	TJP
NO.	REVISIONS	DATE	BY

DESIGNED BY	RTP	CHECKED BY	TJP
DRAWN BY	TJH	APPROVED BY	DPK
HOR. SCALE:		RELEASED FOR CONSTRUCTION BY:	
VERTICAL:		DATE	2013/11/21

ENGINEER'S SEAL
 PROVINCE OF MANITOBA
 DESIGNATED BY
T.J. PETERS
 2013/11/21
 Member
 22309
 REGISTERED PROFESSIONAL ENGINEER

THE CITY OF WINNIPEG
 PUBLIC WORKS DEPARTMENT

PLESSIS ROAD TWINNING AND GRADE SEPARATION AT CN REDDITT SUBDIVISION CONTRACT 3

CITY DRAWING NUMBER
 U238-2014-2101
 SHEET 01 OF 66

GENERAL ARRANGEMENT

CT-0001