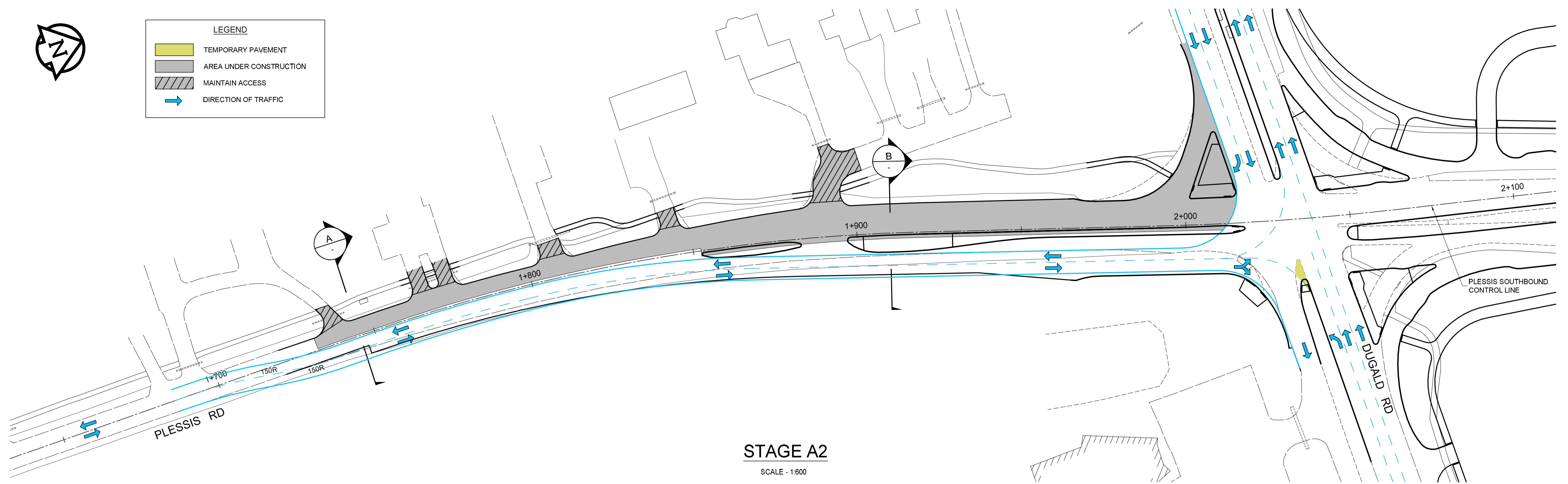
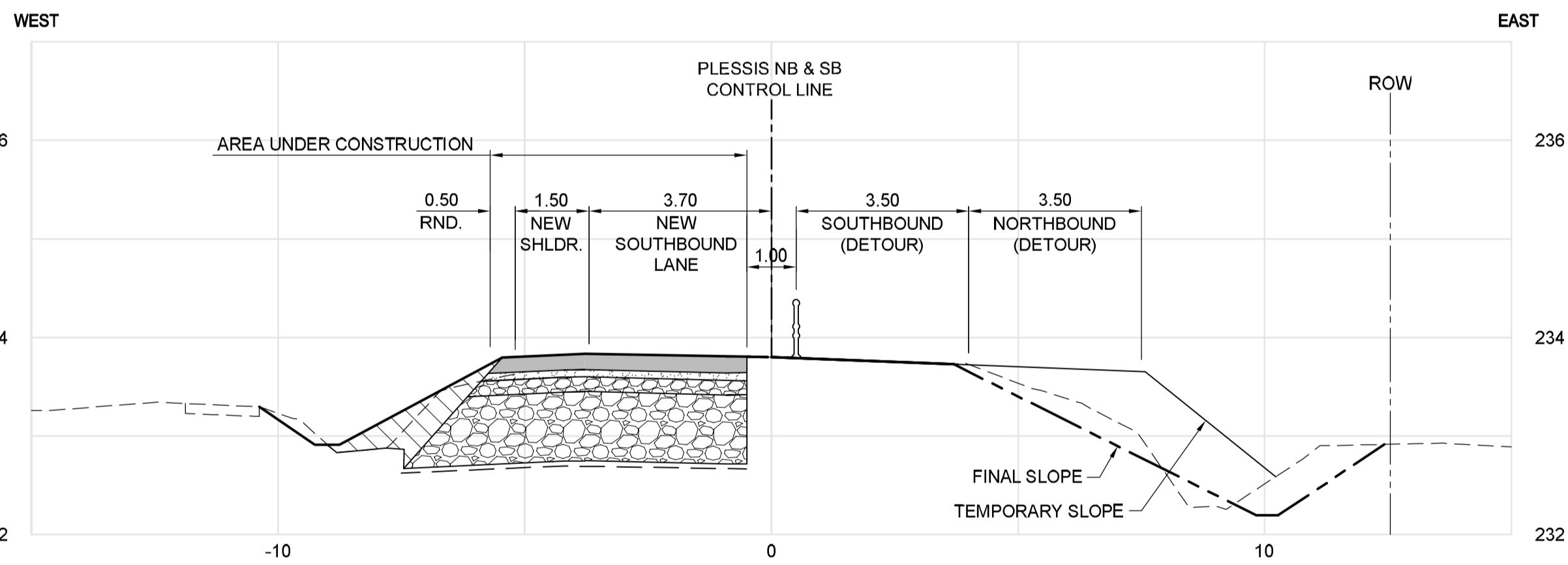


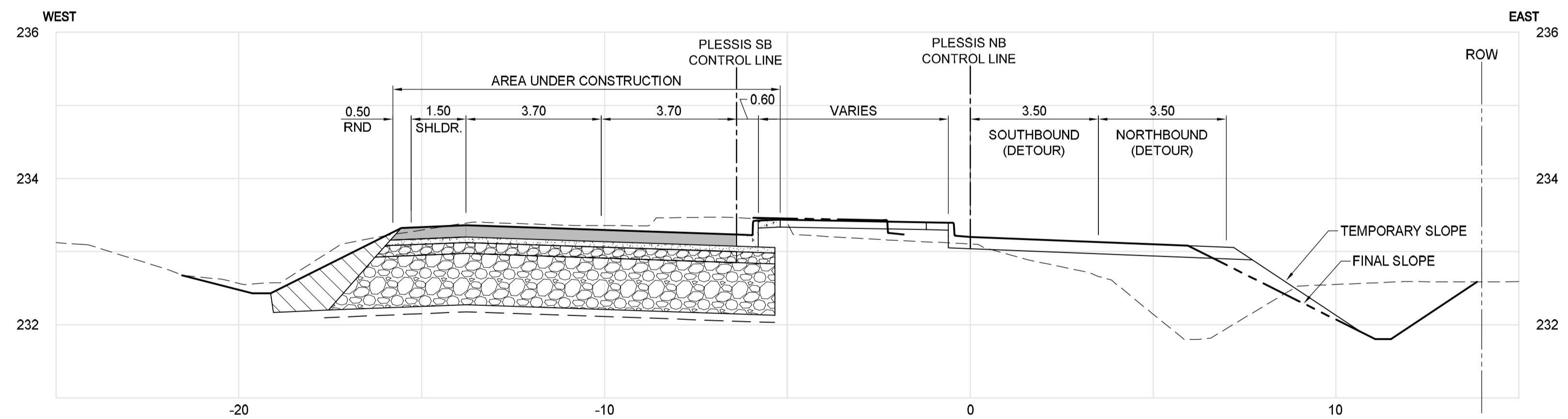
LEGEND	
	TEMPORARY PAVEMENT
	AREA UNDER CONSTRUCTION
	MAINTAIN ACCESS
	DIRECTION OF TRAFFIC



STAGE A2
SCALE - 1:600



A | STAGING SECTION STA. 1+745
Scale - H:1:100 V:1:50



B | STAGING SECTION STA. 1+910
Scale - H:1:100 V:1:50

NOTE:
SEE SHEET CT-0046 FOR PAVEMENT
STRUCTURE OF PERMANENT LANES.



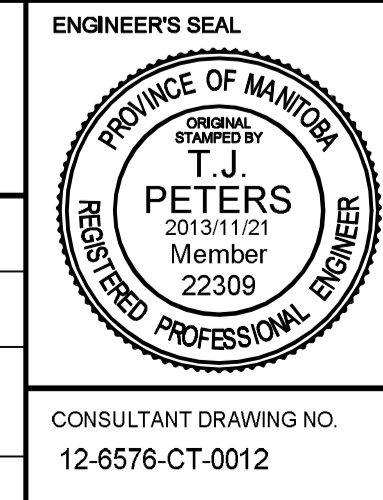
BID OPPORTUNITY NO. 712-2013

150 WM	150 WM	HYDRO	HYDRO	HYDRO	150 WM	WATERMAIN	150 WM
						HYDRANT	
						LAND DRAINAGE SEWER	
						GAS	
						LEGEND-PROFILE	

LOCATION APPROVED UNDERGROUND STRUCTURES	
SUPV. U/G STRUCTURES COMMITTEE	DATE
NOTE: LOCATION OF UNDERGROUND STRUCTURES AS SHOWN ARE BASED ON THE BEST INFORMATION AVAILABLE, BUT NO GUARANTEE IS GIVEN THAT ALL EXISTING UTILITIES ARE SHOWN OR THAT THE GIVEN LOCATIONS ARE EXACT. CONFIRMATION OF EXISTENCE AND EXACT LOCATION OF ALL SERVICES MUST BE OBTAINED FROM THE INDIVIDUAL UTILITIES BEFORE PROCEEDING WITH CONSTRUCTION.	

B.M. ELEV.	NO.	ISSUED FOR TENDER	DATE	BY
	0	ISSUED FOR TENDER	2013/11/21	TJP

DESIGNED BY	TJH	CHECKED BY	TJP
DRAWN BY	TJH	APPROVED BY	DPK
HOR. SCALE:	AS NOTED	RELEASED FOR CONSTRUCTION BY:	
VERTICAL:		DATE	2013/11/21



		PLESSIS ROAD TWINNING AND GRADE SEPARATION AT CN REDDITT SUBDIVISION CONTRACT 3	
CONSULTANT DRAWING NO. 12-6576-CT-0012		TRAFFIC STAGING - STAGE A2	
CITY DRAWING NUMBER U238-2014-2112		SHEET 12 OF 66	
CT-0012			

2013-05-28