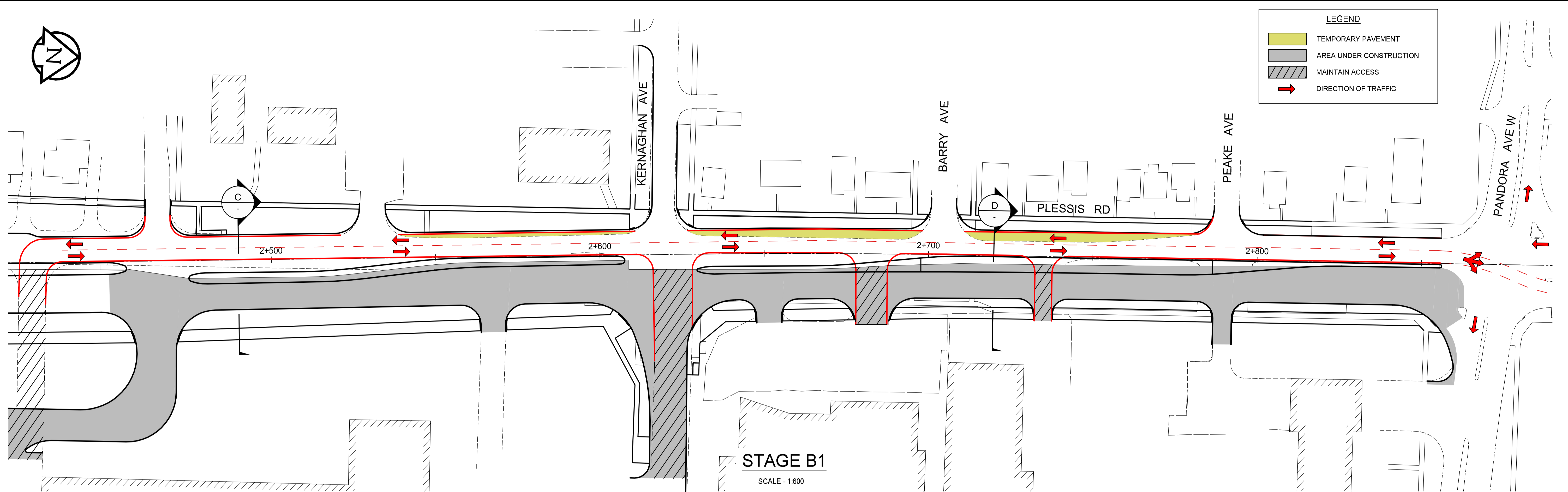
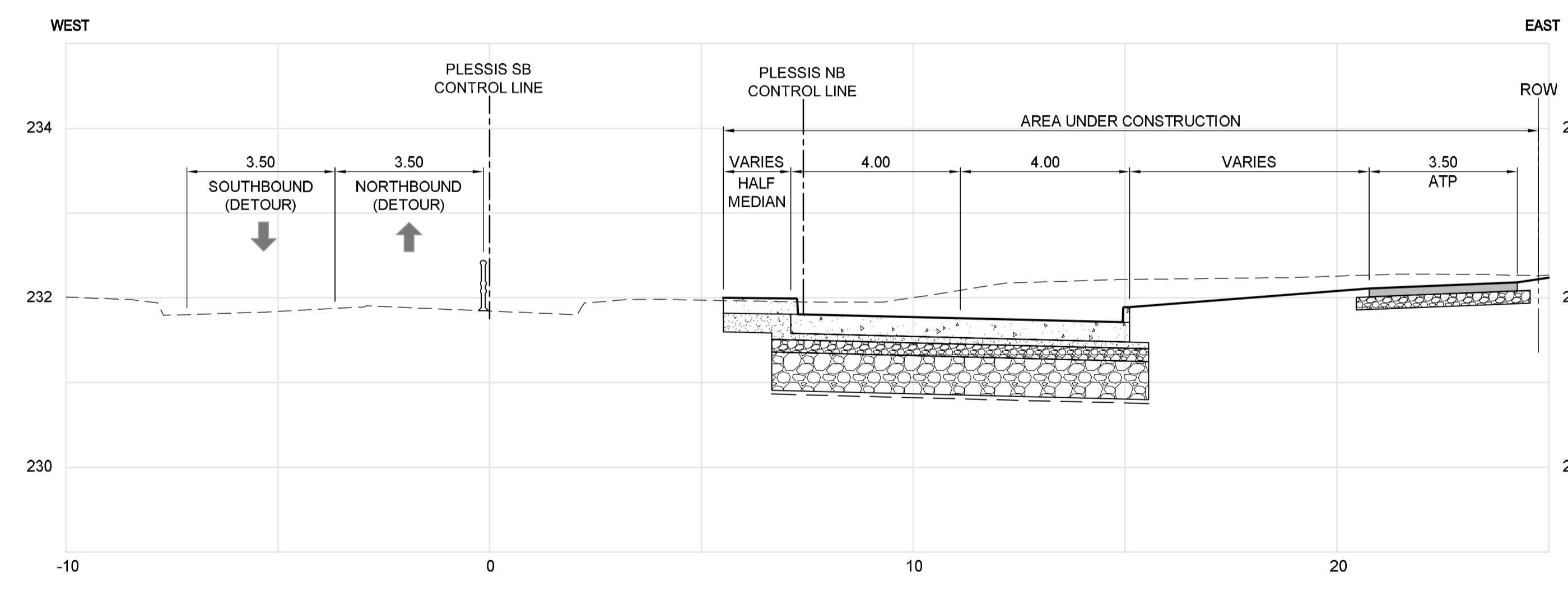


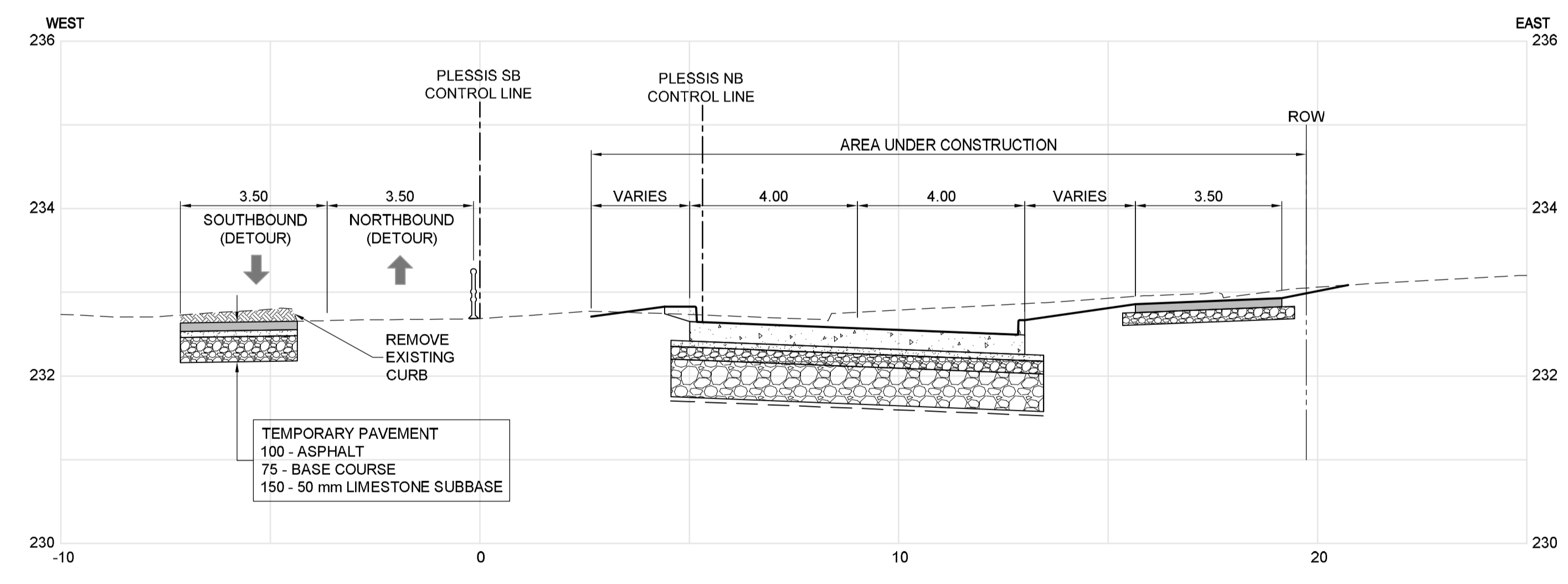
2013-05-28



STAGE B1
SCALE - 1:600



C STAGING SECTION STA. 2+490
Scale - H:1:100 V:1:50



D STAGING SECTION STA. 2+720
Scale - H:1:100 V:1:50

NOTE:
SEE SHEET CT-0050 FOR PAVEMENT
STRUCTURE OF PERMANENT LANES.

NOTE:
SEE SHEET CT-0051 FOR PAVEMENT
STRUCTURE OF PERMANENT LANES.

APEGM
Certificate of Authorization
Dillon Consulting Limited (MB)
No. 1789 Date: 2013/11/21

BID OPPORTUNITY NO. 712-2013

150 WM	WATERMAIN	150 WM	HYDRO	HYDRO	150 WM	WATERMAIN	150 WM
HYDRANT	HYDRANT	MTS	M.T.S.	MTS	HYDRANT	HYDRANT	MTS
VALVE	VALVE	300 LDS	CONCRETE	300 LDS	VALVE	CONCRETE	300 LDS
LAND DRAINAGE SEWER	LAND DRAINAGE SEWER	250 WWS	ASPHALT	250 WWS	WASTE WATER SEWER	ASPHALT	250 WWS
WASTE WATER SEWER	WASTE WATER SEWER	MANHOLE	PLANING	MANHOLE	WASTE WATER SEWER	PLANING	MANHOLE
CATCH BASIN	CATCH BASIN	CURB INLET	SIDEWALK	CURB INLET	CATCH BASIN	SIDEWALK	CURB INLET
CURB INLET	CURB INLET	JUNCTIONS	PAVING STONES	JUNCTIONS	CURB INLET	PAVING STONES	JUNCTIONS
JUNCTIONS	JUNCTIONS	CULVERT	PROPERTY LINE	CULVERT	JUNCTIONS	PROPERTY LINE	CULVERT
CULVERT	CULVERT	100 GAS	DRAINAGE SWALE	100 GAS	CULVERT	DRAINAGE SWALE	100 GAS
100 GAS	100 GAS	EXISTING	DRAINAGE ARROW	EXISTING	100 GAS	DRAINAGE ARROW	EXISTING
EXISTING	EXISTING	PROPOSED	CURB RAMP	PROPOSED	EXISTING	CURB RAMP	PROPOSED
LEGEND-PLAN	LEGEND-PLAN	LEGEND-PROFILE	LEGEND-PLAN	LEGEND-PROFILE	LEGEND-PLAN	LEGEND-PROFILE	LEGEND-PROFILE

LOCATION APPROVED UNDERGROUND STRUCTURES
SUPV. U/G STRUCTURES COMMITTEE DATE
NOTE:
LOCATION OF UNDERGROUND STRUCTURES AS SHOWN ARE BASED ON THE BEST INFORMATION AVAILABLE, BUT NO GUARANTEE IS GIVEN THAT ALL EXISTING UTILITIES ARE SHOWN OR THAT THE GIVEN LOCATIONS ARE EXACT. CONFIRMATION OF EXISTENCE AND EXACT LOCATION OF ALL SERVICES MUST BE OBTAINED FROM THE INDIVIDUAL UTILITIES BEFORE PROCEEDING WITH CONSTRUCTION.

B.M. ELEV.			
NO.	ISSUED FOR TENDER	2013/11/21	TJP
REVISIONS	DATE	BY	

DESIGNED BY	TJH	CHECKED BY	TJP
DRAWN BY	TJH	APPROVED BY	DPK
HOR. SCALE:	AS NOTED	RELEASED FOR CONSTRUCTION BY:	
VERTICAL:		DATE	2013/11/21

ENGINEER'S SEAL
PROVINCE OF MANITOBA
DESIGNED BY
T.J. PETERS
2013/11/21
Member
22309
REGISTERED PROFESSIONAL ENGINEER

THE CITY OF WINNIPEG
PUBLIC WORKS DEPARTMENT
PLESSIS ROAD TWINNING AND GRADE SEPARATION AT CN REDDITT SUBDIVISION CONTRACT 3
CITY DRAWING NUMBER U238-2014-2113
SHEET 13 OF 66
TRAFFIC STAGING - STAGE B1
CT-0013