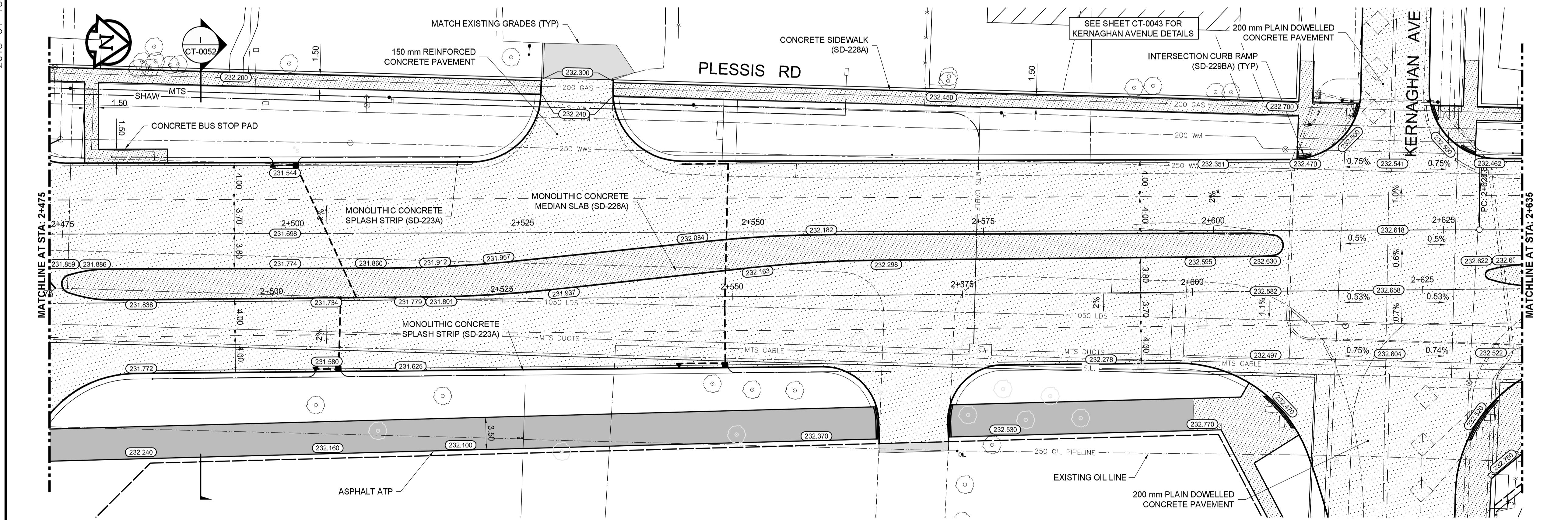


- CONSTRUCTION NOTES:**
1. CONTRACTOR SHALL TAKE PRECAUTIONARY STEPS TO AVOID DAMAGE FROM CONSTRUCTION ACTIVITIES TO EXISTING BOULEVARDS AND TREES WITHIN THE LIMITS OF CONSTRUCTION.
 2. LOCATION OF EXISTING SERVICES ARE TO BE CONFIRMED IN THE FIELD BY THE CONTRACTOR.
 3. TIE-INS TO BE VERIFIED IN THE FIELD BY THE CONTRACT ADMINISTRATOR.
 4. LIMITS OF SIDEWALK RENEWALS TO BE FINALIZED IN THE FIELD BY THE CONTRACT ADMINISTRATOR.
 5. FOR ADJUSTMENTS AND REMOVALS SEE SHEETS CT-0002 TO CT-0010.
 6. DITCH GRADING TO BE FINALIZED IN FIELD BY CONTRACT ADMINISTRATOR.
 7. INSTALL 18 m OF 150 mm SUB DRAIN TO CATCH BASINS IN BOTH DIRECTIONS PARALLEL TO ROADWAY AS PER SD-245 AND CAP ENDS.
 8. INSTALL 100 m OF 150 mm SUB DRAIN ON EITHER SIDE OF PLESSIS UNDERPASS LOW POINT. (LOWEST PAVEMENT EDGE ONLY)
 9. SEE CIVIL DRAWINGS FOR ALL CATCH BASIN AND CULVERT INFORMATION.
 11. EXCAVATION SLOPES ON EITHER SIDE OF THE RAIL SHOFLY SHALL BE AS DIRECTED IN THE GEOTECHNICAL MEMO WITHIN THE BID OPPORTUNITY.
 12. NO VIBRATORY COMPACTION OVER OIL LINES.



METRIC
WHOLE NUMBERS INDICATE MILLIMETRES
DECIMAL NUMBERS INDICATE METRES

WARNING

IF POWER EQUIPMENT OR EXPLOSIVES ARE TO BE USED FOR EXCAVATION ON THIS PROJECT THE CONTRACTOR MUST:

1. NOTIFY THE GAS COMPANY OF THE PROPOSED LOCATION OF EXCAVATION.
2. TAKE PRECAUTION TO AVOID DAMAGE TO GAS COMPANY INSTALLATIONS SEE PROVINCIAL REGULATION 140/22 FOR DETAILS.
3. OBTAIN EXCAVATION PERMITS PRIOR TO CONSTRUCTION.



150 WWS	WATERMAIN	150 WWS	HYDRO	HYDRO	HYDRO	150 WWS	WATERMAIN	150 WWS
300 LDS	LAND DRAINAGE SEWER	300 LDS	MTS	MTS	300 LDS	LAND DRAINAGE SEWER	300 LDS	300 LDS
250 WWS	WASTE WATER SEWER	250 WWS	MTS	MTS	250 WWS	WASTE WATER SEWER	250 WWS	250 WWS
100 GAS	GAS	100 GAS	MTS	MTS	100 GAS	GAS	100 GAS	100 GAS
EXISTING	LEGEND-PLAN	PROPOSED	EXISTING	LEGEND-PLAN	PROPOSED	EXISTING	LEGEND-PROFILE	PROPOSED

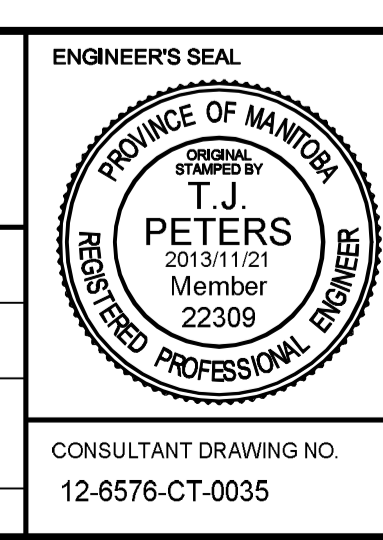
LOCATION APPROVED UNDERGROUND STRUCTURES

SUPV. U/G STRUCTURES COMMITTEE DATE

NOTE:
LOCATION OF UNDERGROUND STRUCTURES AS SHOWN ARE BASED ON THE BEST INFORMATION AVAILABLE. BUT NO GUARANTEE IS GIVEN THAT THE GIVEN LOCATIONS ARE EXACT CONFIRMATION OF EXISTENCE AND EXACT LOCATION OF ALL SERVICES MUST BE OBTAINED FROM THE INDIVIDUAL UTILITIES BEFORE PROCEEDING WITH CONSTRUCTION.

B.M. ELEV.					
NO.	ISSUED FOR TENDER	2013/11/21	TJP		
	REVISIONS	DATE	BY	DATE	

DESIGNED BY	RTP	CHECKED BY	TJP
DRAWN BY	TJH	APPROVED BY	DPK
HOR. SCALE:	1:250	RELEASED FOR CONSTRUCTION BY:	
VERTICAL:	1:10	DATE	2013/11/21



THE CITY OF WINNIPEG PUBLIC WORKS DEPARTMENT

PLESSIS ROAD TWINNING AND GRADE SEPARATION AT CN REDDITT SUBDIVISION CONTRACT 3

PLAN-PROFILE - PLESSIS - STA. 2+475 TO 2+635

CITY DRAWING NUMBER U238-2014-2135
SHEET 35 OF 66

CT-0035

2013-04-15