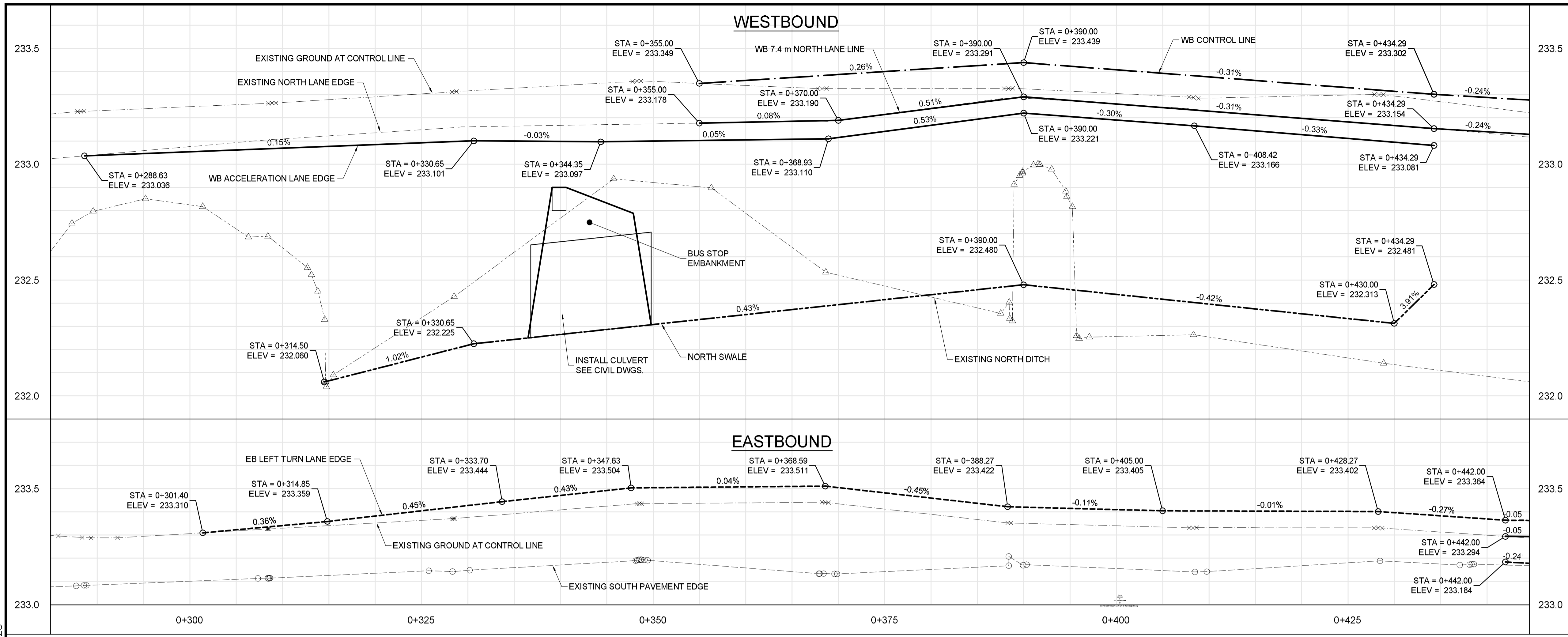
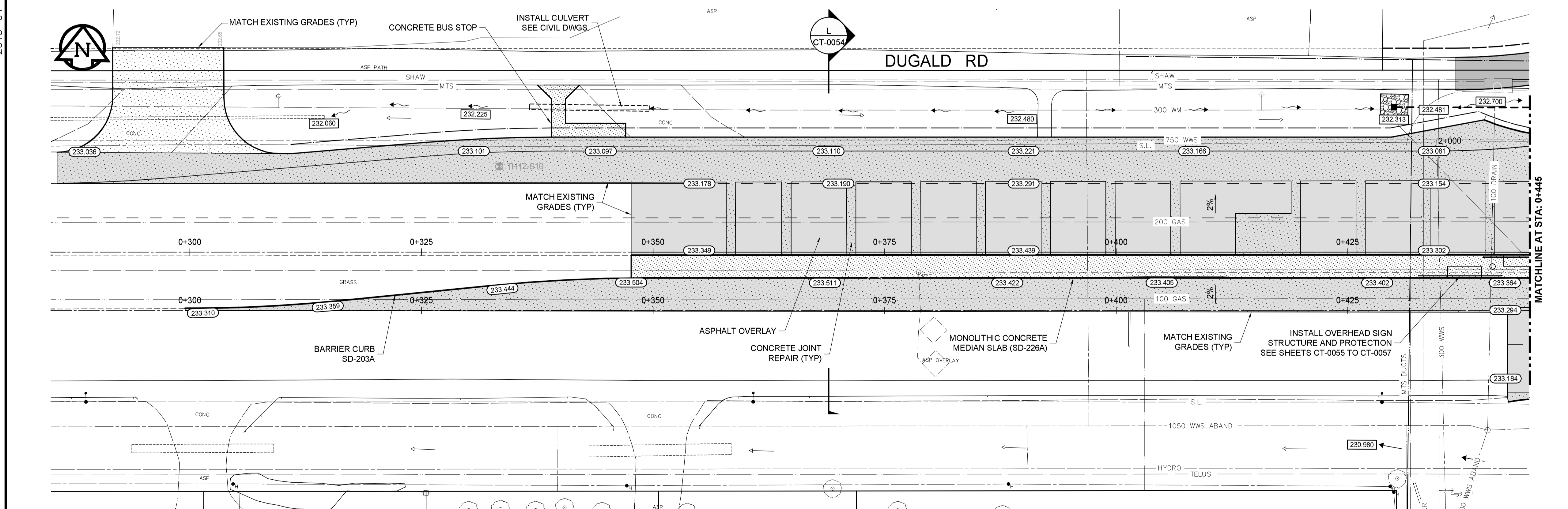


2013-04-25



- CONSTRUCTION NOTES:**
1. CONTRACTOR SHALL TAKE PRECAUTIONARY STEPS TO AVOID DAMAGE FROM CONSTRUCTION ACTIVITIES TO EXISTING BOULEVARDS AND TREES WITHIN THE LIMITS OF CONSTRUCTION.
 2. LOCATION OF EXISTING SERVICES ARE TO BE CONFIRMED IN THE FIELD BY THE CONTRACTOR.
 3. TIE-INS TO BE VERIFIED IN THE FIELD BY THE CONTRACT ADMINISTRATOR.
 4. LIMITS OF SIDEWALK RENEWALS TO BE FINALIZED IN THE FIELD BY THE CONTRACT ADMINISTRATOR.
 5. FOR ADJUSTMENTS AND REMOVALS SEE SHEETS CT-0002 TO CT-0010.
 6. DITCH GRADING TO BE FINALIZED IN FIELD BY CONTRACT ADMINISTRATOR.
 7. INSTALL 18 m OF 150 mm SUB DRAIN TO CATCH BASINS IN BOTH DIRECTIONS PARALLEL TO ROADWAY AS PER SD-245 AND CAP ENDS.
 8. INSTALL 100 m OF 150 mm SUB DRAIN ON EITHER SIDE OF PLESSIS UNDERPASS LOW POINT. (LOWEST PAVEMENT EDGE ONLY)
 9. SEE CIVIL DRAWINGS FOR ALL CATCH BASIN AND CULVERT INFORMATION.
 10. INSTALL MODIFIED BARRIER CURB (SD-203B) ON ALL CONCRETE APPROACH RADII.
 11. EXCAVATION SLOPES ON EITHER SIDE OF THE RAIL SHOOFLY SHALL BE AS DIRECTED IN THE GEOTECHNICAL MEMO WITHIN THE BID OPPORTUNITY.
 12. NO VIBRATORY COMPACTION OVER OIL LINES.



METRIC
WHOLE NUMBERS INDICATE MILLIMETRES
DECIMALIZED NUMBERS INDICATE METRES

WARNING

IF POWER EQUIPMENT OR EXPLOSIVES ARE TO BE USED FOR EXCAVATION ON THIS PROJECT THE CONTRACTOR MUST:

1. NOTIFY THE GAS COMPANY OF THE PROPOSED LOCATION OF EXCAVATION.
2. TAKE PRECAUTION TO AVOID DAMAGE TO GAS COMPANY INSTALLATIONS SEE PROVINCIAL REGULATION 140/22 FOR DETAILS.
3. OBTAIN EXCAVATION PERMITS PRIOR TO CONSTRUCTION.



150 WWS	WATERMAIN	150 WWS	HYDRO	HYDRO	HYDRO	150 WWS	WATERMAIN	150 WWS
HYDRANT	HYDRANT	MTS	MTS	CONCRETE	CONCRETE	HYDRANT	HYDRANT	HYDRANT
VALVE	VALVE	300 LDS	300 LDS	ASPHALT	ASPHALT	VALVE	VALVE	VALVE
LAND DRAINAGE SEWER	LAND DRAINAGE SEWER	250 WWS	250 WWS	PLANING	PLANING	LAND DRAINAGE SEWER	LAND DRAINAGE SEWER	LAND DRAINAGE SEWER
WASTE WATER SEWER	WASTE WATER SEWER	MANHOLE	MANHOLE	SIDEWALK	SIDEWALK	WASTE WATER SEWER	WASTE WATER SEWER	WASTE WATER SEWER
CATCH BASIN	CATCH BASIN	JUNCTIONS	JUNCTIONS	PAVING STONES	PAVING STONES	CATCH BASIN	CATCH BASIN	CATCH BASIN
CURB INLET	CURB INLET	CULVERT	CULVERT	PROPERTY LINE	PROPERTY LINE	CURB INLET	CURB INLET	CURB INLET
100 GAS	100 GAS	EXISTING	EXISTING	DRAINAGE SWALE	DRAINAGE SWALE	100 GAS	100 GAS	100 GAS
EXISTING	LEGEND-PLAN	PROPOSED	EXISTING	LEGEND-PLAN	PROPOSED	EXISTING	LEGEND-PROFILE	PROPOSED

LOCATION APPROVED UNDERGROUND STRUCTURES

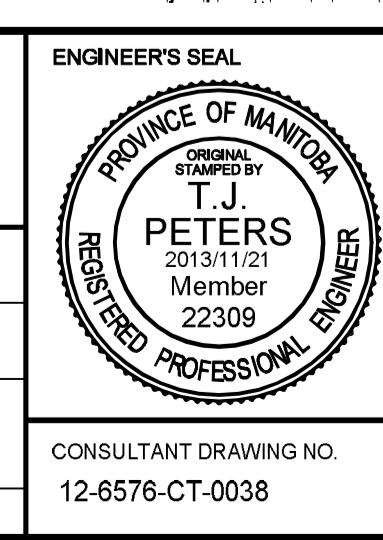
SUPV. U/G STRUCTURES COMMITTEE DATE

NOTE:
LOCATION OF UNDERGROUND STRUCTURES AS SHOWN ARE BASED ON THE BEST INFORMATION AVAILABLE, BUT NO GUARANTEE IS GIVEN THAT ALL EXISTING UTILITIES ARE SHOWN OR THAT THE GIVEN LOCATIONS ARE EXACT. CONFIRMATION OF EXISTENCE AND EXACT LOCATION OF ALL SERVICES MUST BE OBTAINED FROM THE INDIVIDUAL UTILITIES BEFORE PROCEEDING WITH CONSTRUCTION.

B.M. ELEV.					
0	ISSUED FOR TENDER	2013/11/21	TJP		
NO.	REVISIONS	DATE	BY	DATE	

DILLON CONSULTING

DESIGNED BY	RTP	CHECKED BY	TJP
DRAWN BY	TJH	APPROVED BY	DPK
HOR. SCALE:	1:250	RELEASED FOR CONSTRUCTION BY:	
VERTICAL:	1:10	DATE	2013/11/21



THE CITY OF WINNIPEG PUBLIC WORKS DEPARTMENT

PLESSIS ROAD TWINNING AND GRADE SEPARATION AT CN REDDITT SUBDIVISION CONTRACT 3

CITY DRAWING NUMBER U238-2014-2138
SHEET 38 OF 66

PLAN-PROFILE - DUGALD - STA. 0+285 TO 0+445

CT-0038

CONSULTANT DRAWING NO. 12-6576-CT-0038