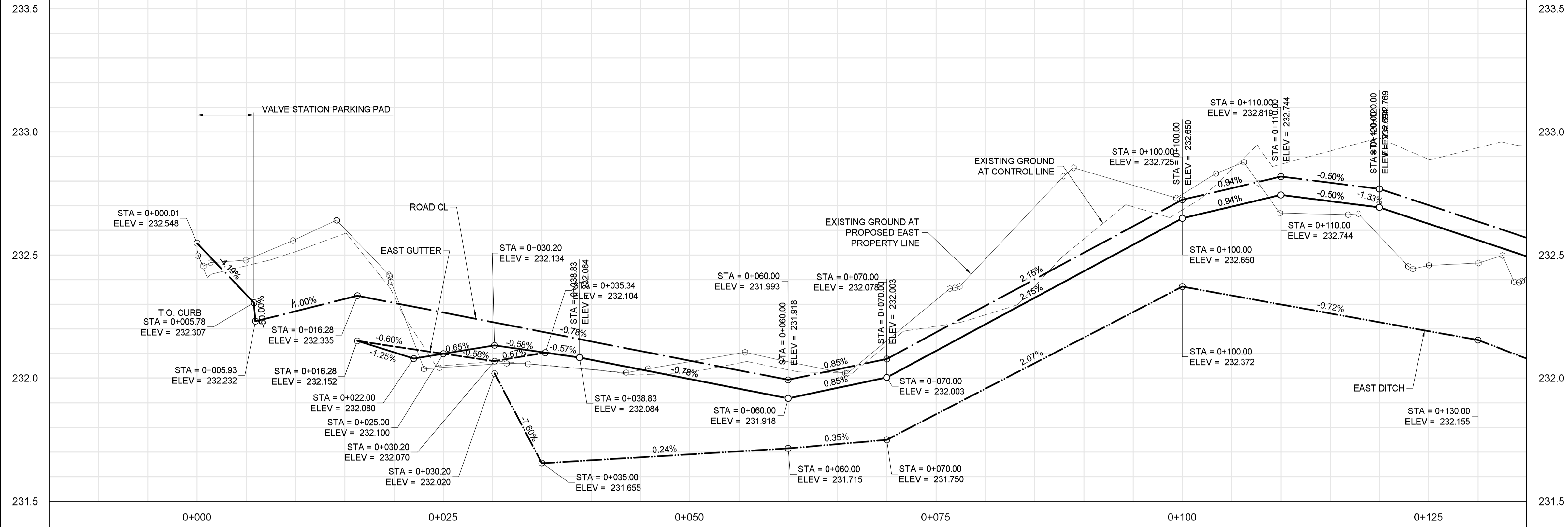
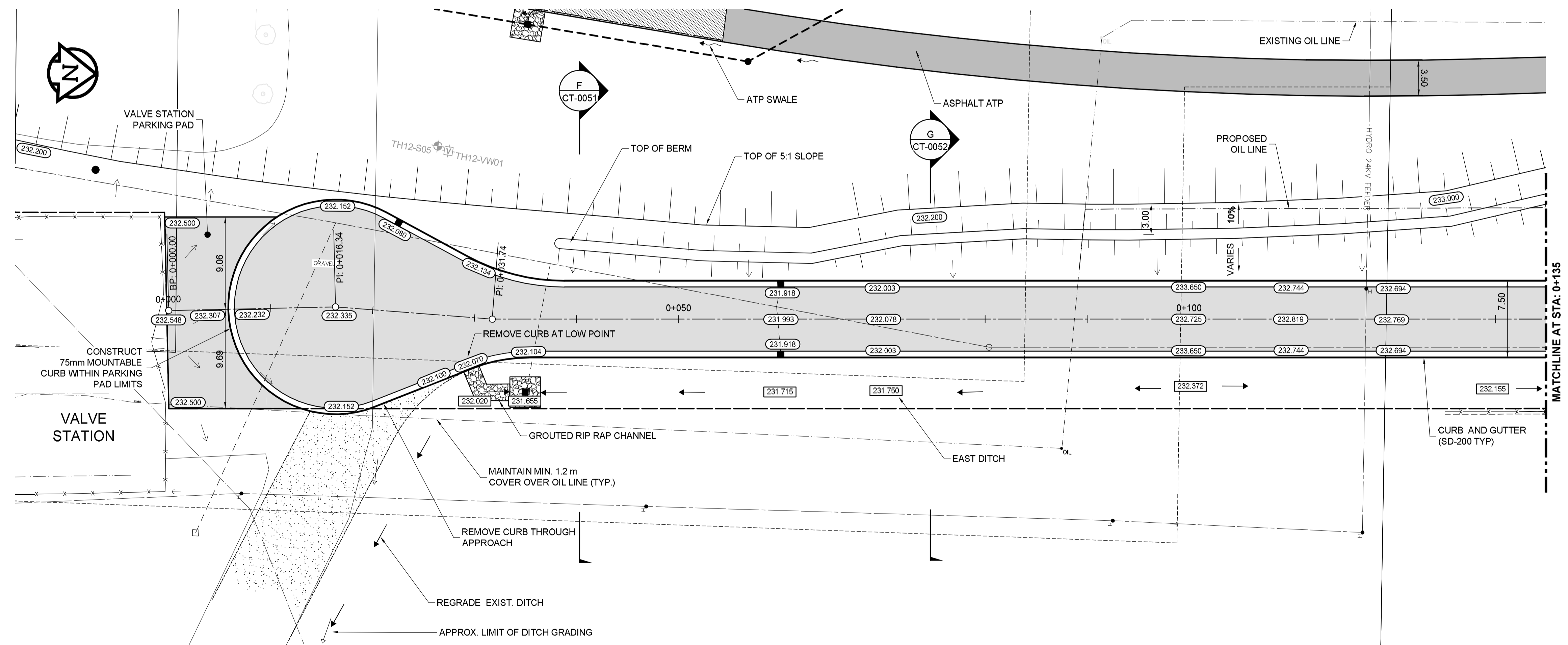


# NORTHEAST ACCESS ROAD



- CONSTRUCTION NOTES:**
1. CONTRACTOR SHALL TAKE PRECAUTIONARY STEPS TO AVOID DAMAGE FROM CONSTRUCTION ACTIVITIES TO EXISTING BOULEVARDS AND TREES WITHIN THE LIMITS OF CONSTRUCTION.
  2. LOCATION OF EXISTING SERVICES ARE TO BE CONFIRMED IN THE FIELD BY THE CONTRACTOR.
  3. TIE-INS TO BE VERIFIED IN THE FIELD BY THE CONTRACT ADMINISTRATOR.
  4. LIMITS OF SIDEWALK RENEWALS TO BE FINALIZED IN THE FIELD BY THE CONTRACT ADMINISTRATOR.
  5. FOR ADJUSTMENTS AND REMOVALS SEE SHEETS CT-0002 TO CT-0010.
  6. DITCH GRADING TO BE FINALIZED IN FIELD BY CONTRACT ADMINISTRATOR.
  7. INSTALL 18 m OF 150 mm SUB DRAIN TO CATCH BASINS IN BOTH DIRECTIONS PARALLEL TO ROADWAY AS PER SD-245 AND CAR ENDS.
  8. INSTALL 100 m OF 150 mm SUB DRAIN ON EITHER SIDE OF PLESSIS UNDERPASS LOW POINT. (LOWEST PAVEMENT EDGE ONLY)
  9. SEE CIVIL DRAWINGS FOR ALL CATCH BASIN AND CULVERT INFORMATION.
  10. INSTALL MODIFIED BARRIER CURB (SD-203B) ON ALL CONCRETE APPROACH RADII.
  11. EXCAVATION SLOPES ON EITHER SIDE OF THE RAIL SHOULDER SHALL BE AS DIRECTED IN THE GEOTECHNICAL MEMO WITHIN THE BID OPPORTUNITY.
  12. NO VIBRATORY COMPACTION OVER OIL LINES.

2013-05-30



**METRIC**

WHOLE NUMBERS INDICATE MILLIMETRES  
DECIMALIZED NUMBERS INDICATE METRES

**WARNING**

- IF POWER EQUIPMENT OR EXPLOSIVES ARE TO BE USED FOR EXCAVATION ON THIS PROJECT THE CONTRACTOR MUST:
1. NOTIFY THE GAS COMPANY OF THE PROPOSED LOCATION OF EXCAVATION.
  2. TAKE PRECAUTION TO AVOID DAMAGE TO GAS COMPANY INSTALLATIONS SEE PROVINCIAL REGULATION 140/22 FOR DETAILS.
  3. OBTAIN EXCAVATION PERMITS PRIOR TO CONSTRUCTION.



BID OPPORTUNITY NO. 712-2013

150 WM	WATERMAIN	150 WM	HYDRO	HYDRO	150 WM	WATERMAIN	150 WM
Hydrant	HYDRANT	MTS	MTS	M.T.S.	Hydrant	HYDRANT	Hydrant
Valve	VALVE	300 LDS	300 LDS	CONCRETE	Valve	VALVE	Valve
Land Drainage Sewer	LAND DRAINAGE SEWER	250 WWS	250 WWS	ASPHALT	Land Drainage Sewer	LAND DRAINAGE SEWER	Land Drainage Sewer
Waste Water Sewer	WASTE WATER SEWER	Manhole	Manhole	PLANING	Waste Water Sewer	WASTE WATER SEWER	Waste Water Sewer
Catch Basin	CATCH BASIN	Junctions	Junctions	SIDEWALK	Curb Inlet	CURB INLET	Curb Inlet
Curb Inlet	CURB INLET	Culverts	Culverts	PAVING STONES	Manhole	MANHOLE	Manhole
Junctions	JUNCTIONS	100 GAS	100 GAS	PROPERTY LINE	Catch Basin	CATCH BASIN	Catch Basin
Culverts	CULVERTS	Existing	Existing	DRAINAGE SWALE	Curb Inlet	CURB INLET	Curb Inlet
Gas	GAS	Legend-Plan	Legend-Plan	DRAINAGE ARROW	Junctions	JUNCTIONS	Junctions
Existing	EXISTING	Proposed	Proposed	CURB RAMP	Culverts	CULVERTS	Culverts
Legend-Plan	LEGEND-PLAN	Proposed	Proposed	Legend-Profile	Gas	GAS	Gas
Proposed	PROPOSED	Existing	Existing	Proposed	Existing	EXISTING	Existing
Legend-Profile	LEGEND-PROFILE	Proposed	Proposed	Existing	Proposed	PROPOSED	Proposed
Proposed	PROPOSED	Existing	Existing	Legend-Profile	Existing	EXISTING	Existing

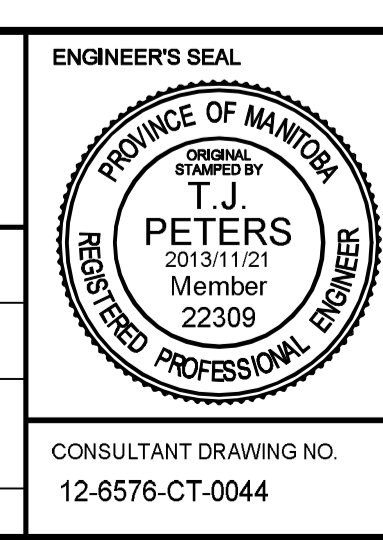
**LOCATION APPROVED UNDERGROUND STRUCTURES**

SUPV. U/G STRUCTURES COMMITTEE DATE

**NOTE:**  
LOCATION OF UNDERGROUND STRUCTURES AS SHOWN ARE BASED ON THE BEST INFORMATION AVAILABLE. BUT NO GUARANTEE IS GIVEN THAT ALL EXISTING UTILITIES ARE SHOWN OR THAT THE GIVEN LOCATIONS ARE EXACT. CONFIRMATION OF EXISTENCE AND EXACT LOCATION OF ALL SERVICES MUST BE OBTAINED FROM THE INDIVIDUAL UTILITIES BEFORE PROCEEDING WITH CONSTRUCTION.

B.M. ELEV.			
0	ISSUED FOR TENDER	2013/11/21	TJP
NO.	REVISIONS	DATE	BY

DESIGNED BY	RTP	CHECKED BY	TJP
DRAWN BY	TJH	APPROVED BY	DPK
HOR. SCALE:	1:250	RELEASED FOR CONSTRUCTION BY:	
VERTICAL:	1:10	DATE	2013/11/21



**THE CITY OF WINNIPEG PUBLIC WORKS DEPARTMENT**

PLESSIS ROAD TWINNING AND GRADE SEPARATION AT CN REDDITT SUBDIVISION CONTRACT 3

CITY DRAWING NUMBER U238-2014-2144  
SHEET 44 OF 66

PLAN-PROFILE - NORTHEAST ACCESS ROAD (1 OF 2) **CT-0044**