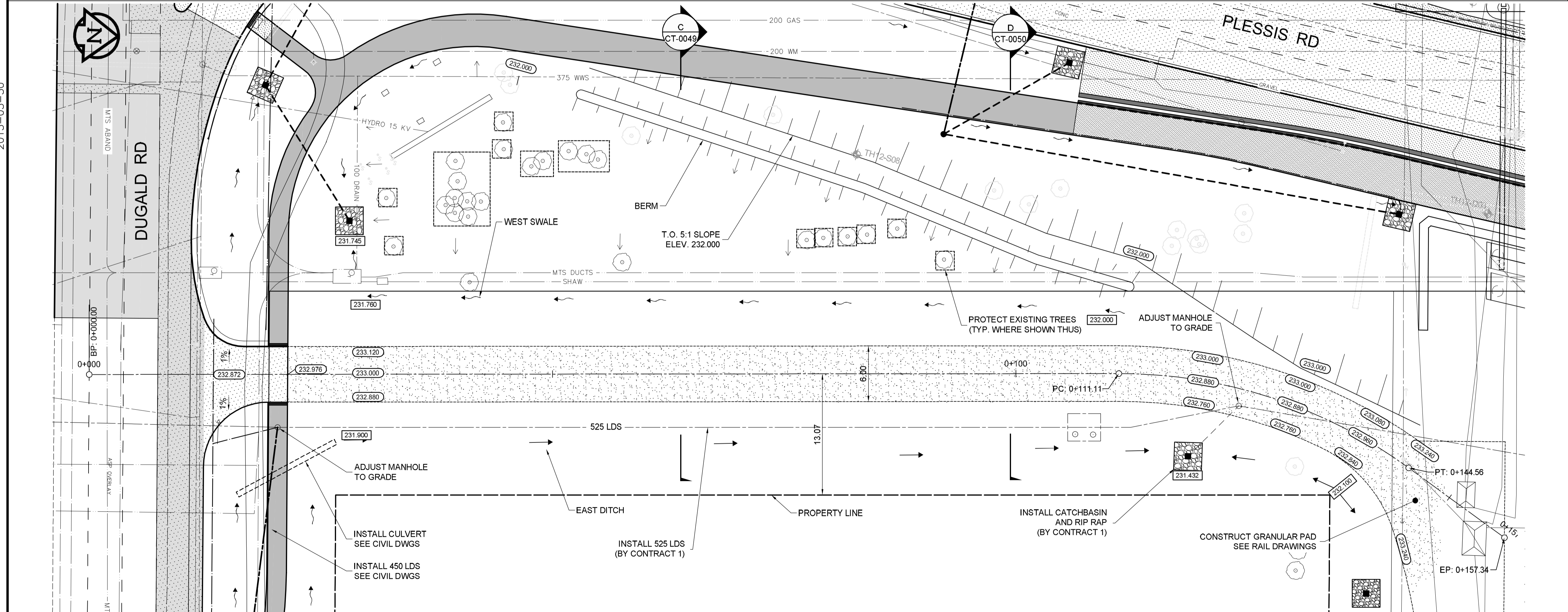


- CONSTRUCTION NOTES:**
- CONTRACTOR SHALL TAKE PRECAUTIONARY STEPS TO AVOID DAMAGE FROM CONSTRUCTION ACTIVITIES TO EXISTING BOULEVARDS AND TREES WITHIN THE LIMITS OF CONSTRUCTION.
 - LOCATION OF EXISTING SERVICES ARE TO BE CONFIRMED IN THE FIELD BY THE CONTRACTOR.
 - TIE-INS TO BE VERIFIED IN THE FIELD BY THE CONTRACT ADMINISTRATOR.
 - LIMITS OF SIDEWALK RENEWALS TO BE FINALIZED IN THE FIELD BY THE CONTRACT ADMINISTRATOR.
 - FOR ADJUSTMENTS AND REMOVALS SEE SHEETS CT-0002 TO CT-0010.
 - DITCH GRADING TO BE FINALIZED IN FIELD BY CONTRACT ADMINISTRATOR.
 - INSTALL 18 m OF 150 mm SUB DRAIN TO CATCH BASINS IN BOTH DIRECTIONS PARALLEL TO ROADWAY AS PER SD-245 AND CAP ENDS.
 - INSTALL 100 m OF 150 mm SUB DRAIN ON EITHER SIDE OF PLESSIS UNDERPASS LOW POINT. (LOWEST PAVEMENT EDGE ONLY)
 - SEE CIVIL DRAWINGS FOR ALL CATCH BASIN AND CULVERT INFORMATION.
 - INSTALL MODIFIED BARRIER CURB (SD-203B) ON ALL CONCRETE APPROACH RADII.
 - EXCAVATION SLOPES ON EITHER SIDE OF THE RAIL SHOOFLY SHALL BE AS DIRECTED IN THE GEOTECHNICAL MEMO WITHIN THE BID OPPORTUNITY.
 - NO VIBRATORY COMPACTION OVER OIL LINES.



METRIC

WHOLE NUMBERS INDICATE MILLIMETRES
DECIMALIZED NUMBERS INDICATE METRES

WARNING

IF POWER EQUIPMENT OR EXPLOSIVES ARE TO BE USED FOR EXCAVATION ON THIS PROJECT THE CONTRACTOR MUST:

- NOTIFY THE GAS COMPANY OF THE PROPOSED LOCATION OF EXCAVATION.
- TAKE PRECAUTION TO AVOID DAMAGE TO GAS COMPANY INSTALLATIONS SEE PROVINCIAL REGULATION 140/22 FOR DETAILS.
- OBTAIN EXCAVATION PERMITS PRIOR TO CONSTRUCTION.



BID OPPORTUNITY NO. 712-2013

150 WM	WATERMAIN	150 WM	HYDRO	HYDRO	150 WM	WATERMAIN	150 WM
○	HYDRANT	○	MTS	MTS	○	HYDRANT	○
⊕	VALVE	⊕	CONCRETE	CONCRETE	⊕	VALVE	⊕
⊗	LAND DRAINAGE SEWER	⊗	ASPHALT	ASPHALT	⊗	LAND DRAINAGE SEWER	⊗
⊘	300 LDS	⊘	PLANNING	PLANNING	⊘	300 LDS	⊘
⊙	250 WWS	⊙	SIDEWALK	SIDEWALK	⊙	250 WWS	⊙
○	MANHOLE	○	PAVING STONES	PAVING STONES	○	MANHOLE	○
⊠	CATCH BASIN	⊠	PROPERTY LINE	PROPERTY LINE	⊠	CATCH BASIN	⊠
▽	CURB INLET	▽	DRAINAGE SWALE	DRAINAGE SWALE	▽	CURB INLET	▽
⊚	JUNCTIONS	⊚	DRAINAGE ARROW	DRAINAGE ARROW	⊚	JUNCTIONS	⊚
⊚	CULVERT	⊚	CURB RAMP	CURB RAMP	⊚	CULVERT	⊚
○	100 GAS	○	EXISTING	EXISTING	○	100 GAS	○
○	LEGEND-PLAN	○	PROPOSED	PROPOSED	○	LEGEND-PROFILE	○

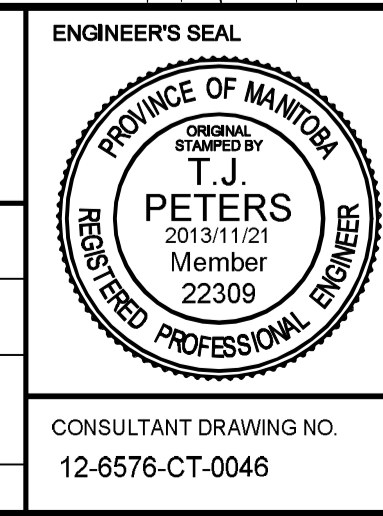
LOCATION APPROVED UNDERGROUND STRUCTURES

SUPV. U/G STRUCTURES COMMITTEE DATE

NOTE: LOCATION OF UNDERGROUND STRUCTURES AS SHOWN ARE BASED ON THE BEST INFORMATION AVAILABLE. BUT NO GUARANTEE IS GIVEN THAT ALL EXISTING UTILITIES ARE SHOWN OR THAT THE GIVEN LOCATIONS ARE EXACT CONFIRMATION OF EXISTENCE AND EXACT LOCATION OF ALL SERVICES MUST BE OBTAINED FROM THE INDIVIDUAL UTILITIES BEFORE PROCEEDING WITH CONSTRUCTION.

B.M. ELEV.	NO.	ISSUED FOR TENDER	DATE	BY
	0	ISSUED FOR TENDER	2013/11/21	TJP
		REVISIONS		

DESIGNED BY	RTP	CHECKED BY	TJP
DRAWN BY	TJH	APPROVED BY	DPK
HOR. SCALE:	1:250	RELEASED FOR CONSTRUCTION BY:	
VERTICAL:	1:10	DATE	2013/11/21



THE CITY OF WINNIPEG PUBLIC WORKS DEPARTMENT

PLESSIS ROAD TWINNING AND GRADE SEPARATION AT CN REDDITT SUBDIVISION CONTRACT 3

PLAN-PROFILE - SOUTHEAST ACCESS ROAD

CITY DRAWING NUMBER U238-2014-2146
SHEET 46 OF 66

CONSULTANT DRAWING NO. 12-6576-CT-0046

CT-0046

2013-05-30