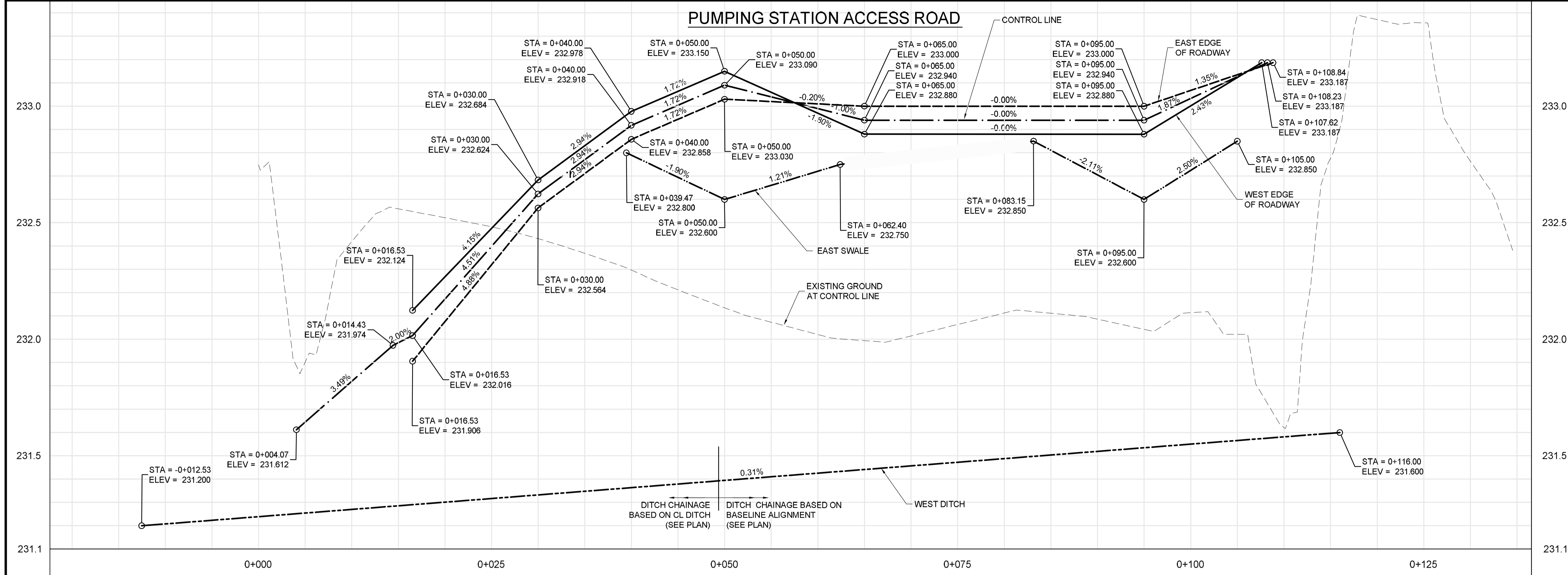
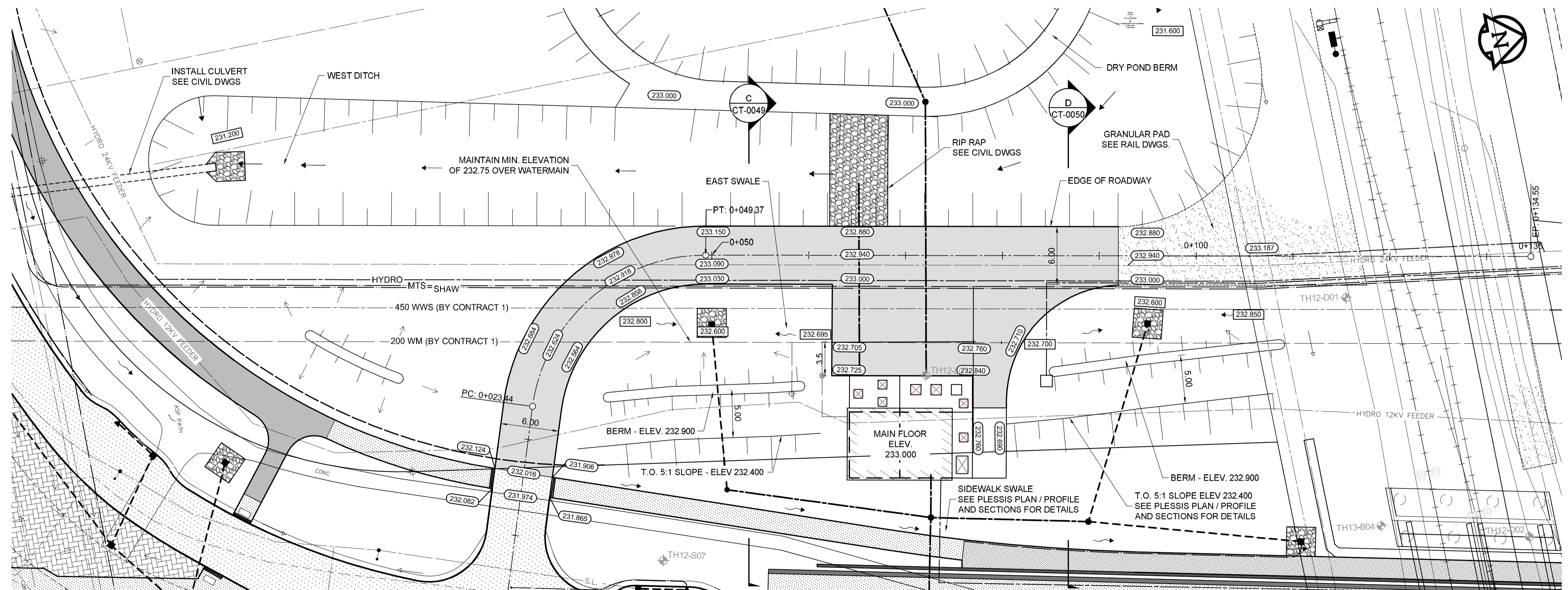


PUMPING STATION ACCESS ROAD



- CONSTRUCTION NOTES:**
1. CONTRACTOR SHALL TAKE PRECAUTIONARY STEPS TO AVOID DAMAGE FROM CONSTRUCTION ACTIVITIES TO EXISTING BOULEVARDS AND TREES WITHIN THE LIMITS OF CONSTRUCTION.
 2. LOCATION OF EXISTING SERVICES ARE TO BE CONFIRMED IN THE FIELD BY THE CONTRACTOR.
 3. TIE-INS TO BE VERIFIED IN THE FIELD BY THE CONTRACT ADMINISTRATOR.
 4. LIMITS OF SIDEWALK RENEWALS TO BE FINALIZED IN THE FIELD BY THE CONTRACT ADMINISTRATOR.
 5. FOR ADJUSTMENTS AND REMOVALS SEE SHEETS CT-0002 TO CT-0010.
 6. DITCH GRADING TO BE FINALIZED IN FIELD BY CONTRACT ADMINISTRATOR.
 7. INSTALL 18 m OF 150 mm SUB DRAIN TO CATCH BASINS IN BOTH DIRECTIONS PARALLEL TO ROADWAY AS PER SD-245 AND CAP ENDS.
 8. INSTALL 100 m OF 150 mm SUB DRAIN ON EITHER SIDE OF PLESSIS UNDERPASS LOW POINT. (LOWEST PAVEMENT EDGE ONLY)
 9. SEE CIVIL DRAWINGS FOR ALL CATCH BASIN AND CULVERT INFORMATION.
 10. INSTALL MODIFIED BARRIER CURB (SD-203B) ON ALL CONCRETE APPROACH RADII.
 11. EXCAVATION SLOPES ON EITHER SIDE OF THE RAIL SHOOLLY SHALL BE AS DIRECTED IN THE GEOTECHNICAL MEMO WITHIN THE BID OPPORTUNITY.
 12. NO VIBRATORY COMPACTION OVER OIL LINES.

2013-05-30



METRIC

WHOLE NUMBERS INDICATE MILLIMETRES
DECIMALIZED NUMBERS INDICATE METRES

WARNING

- IF POWER EQUIPMENT OR EXPLOSIVES ARE TO BE USED FOR EXCAVATION ON THIS PROJECT THE CONTRACTOR MUST:
1. NOTIFY THE GAS COMPANY OF THE PROPOSED LOCATION OF EXCAVATION.
 2. TAKE PRECAUTION TO AVOID DAMAGE TO GAS COMPANY INSTALLATIONS SEE PROVINCIAL REGULATION 140/22 FOR DETAILS.
 3. OBTAIN EXCAVATION PERMITS PRIOR TO CONSTRUCTION.



BID OPPORTUNITY NO. 712-2013

150 WM	WATERMAIN	150 WM	HYDRO	HYDRO	150 WM	WATERMAIN	150 WM
HYDRANT	VALVE	300 LDS	LAND DRAINAGE SEWER	250 WWS	WASTE WATER SEWER	MANHOLE	CATCH BASIN
CURB INLET	JUNCTIONS	CULVERT	100 GAS	GAS	EXISTING	LEGEND-PLAN	PROPOSED
HYDRO M.T.S.	CONCRETE	ASPHALT	PLANING	SIDEWALK	PAVING STONES	PROPERTY LINE	DRAINAGE SWALE
DRAINAGE ARROW	CURB RAMP	EXISTING	LEGEND-PLAN	PROPOSED	EXISTING	LEGEND-PROFILE	PROPOSED

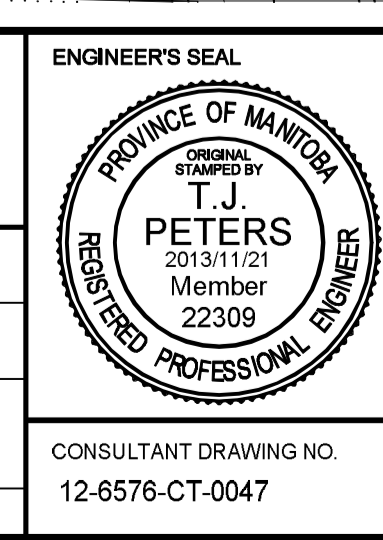
LOCATION APPROVED UNDERGROUND STRUCTURES

SUPV. U/G STRUCTURES COMMITTEE DATE

NOTE:
LOCATION OF UNDERGROUND STRUCTURES AS SHOWN ARE BASED ON THE BEST INFORMATION AVAILABLE. BUT NO GUARANTEE IS GIVEN THAT THE GIVEN LOCATIONS ARE EXACT CONFIRMATION OF EXISTENCE AND EXACT LOCATION OF ALL SERVICES MUST BE OBTAINED FROM THE INDIVIDUAL UTILITIES BEFORE PROCEEDING WITH CONSTRUCTION.

B.M. ELEV.			
0	ISSUED FOR TENDER	2013/11/21	TJP
NO.	REVISIONS	DATE	BY

DESIGNED BY	RTP	CHECKED BY	TJP
DRAWN BY	TJH	APPROVED BY	DPK
HOR. SCALE:	1:250	RELEASED FOR CONSTRUCTION BY:	
VERTICAL:	1:10	DATE	2013/11/21



THE CITY OF WINNIPEG PUBLIC WORKS DEPARTMENT

PLESSIS ROAD TWINNING AND GRADE SEPARATION AT CN REDDITT SUBDIVISION CONTRACT 3

CITY DRAWING NUMBER U238-2014-2147
SHEET 47 OF 66

PLANNING - PUMPING STATION ACCESS ROAD

CT-0047