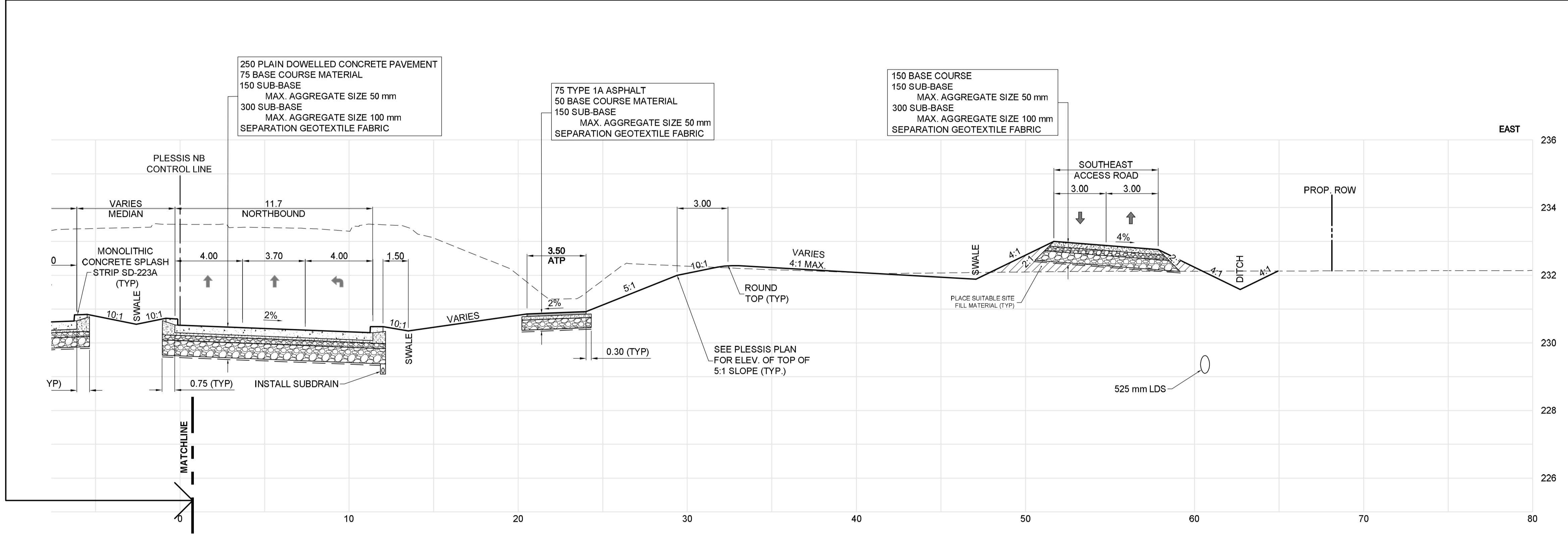


C | PLESSIS ROAD - STA. 2+120 (NORTHBOUND)
 CT-0026 Scale: H-150 V-1.75



C | PLESSIS ROAD - STA. 2+120 (NORTHBOUND)
 CT-0026 CT-0048 Scale: H-150 V-1.75



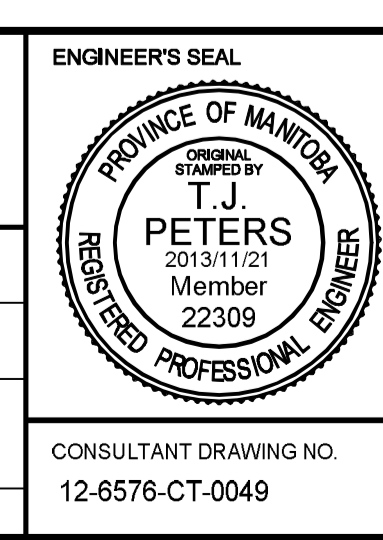
2013-05-22

150 WM	WATERMAIN	150 WM	HYDRO	HYDRO	HYDRO	150 WM	WATERMAIN	150 WM
⊕	HYDRANT	⊕	MTS	MTS	MTS	⊕	HYDRANT	⊕
⊕	VALVE	⊕	---	---	---	⊕	VALVE	⊕
⊕	LAND DRAINAGE SEWER	⊕	---	---	---	⊕	LAND DRAINAGE SEWER	⊕
⊕	WASTE WATER SEWER	⊕	---	---	---	⊕	WASTE WATER SEWER	⊕
○	MANHOLE	○	---	---	---	○	MANHOLE	○
□	CATCH BASIN	□	---	---	---	□	CATCH BASIN	□
▽	CURB INLET	▽	---	---	---	▽	CURB INLET	▽
---	JUNCTIONS	---	---	---	---	---	JUNCTIONS	---
---	CULVERT	---	---	---	---	---	CULVERT	---
---	GAS	---	---	---	---	---	GAS	---
---	EXISTING	---	---	---	---	---	EXISTING	---
---	LEGEND-PLAN	---	---	---	---	---	LEGEND-PLAN	---
---	PROPOSED	---	---	---	---	---	PROPOSED	---
---	EXISTING	---	---	---	---	---	EXISTING	---
---	LEGEND-PROFILE	---	---	---	---	---	LEGEND-PROFILE	---
---	PROPOSED	---	---	---	---	---	PROPOSED	---

LOCATION APPROVED UNDERGROUND STRUCTURES	
SUPV. U/G STRUCTURES COMMITTEE	DATE
NOTE: LOCATION OF UNDERGROUND STRUCTURES AS SHOWN ARE BASED ON THE BEST INFORMATION AVAILABLE, BUT NO GUARANTEE IS GIVEN THAT ALL EXISTING UTILITIES ARE SHOWN OR THAT THE GIVEN LOCATIONS ARE EXACT. CONFIRMATION OF EXISTENCE AND EXACT LOCATION OF ALL SERVICES MUST BE OBTAINED FROM THE INDIVIDUAL UTILITIES BEFORE PROCEEDING WITH CONSTRUCTION.	

B.M. ELEV.	
0	ISSUED FOR TENDER
NO.	REVISIONS
	DATE
	BY
	DATE
	DATE

DESIGNED BY	RTP	CHECKED BY	TJP
DRAWN BY	TJH	APPROVED BY	DPK
HOR. SCALE:	AS NOTED	RELEASED FOR CONSTRUCTION BY:	
VERTICAL:		DATE	2013/11/21



THE CITY OF WINNIPEG PUBLIC WORKS DEPARTMENT

PLESSIS ROAD TWINNING AND GRADE SEPARATION AT CN REDDITT SUBDIVISION CONTRACT 3

PLESSIS SECTIONS (2 OF 6)

CITY DRAWING NUMBER U238-2014-2149
SHEET 49 OF 66

CT-0049