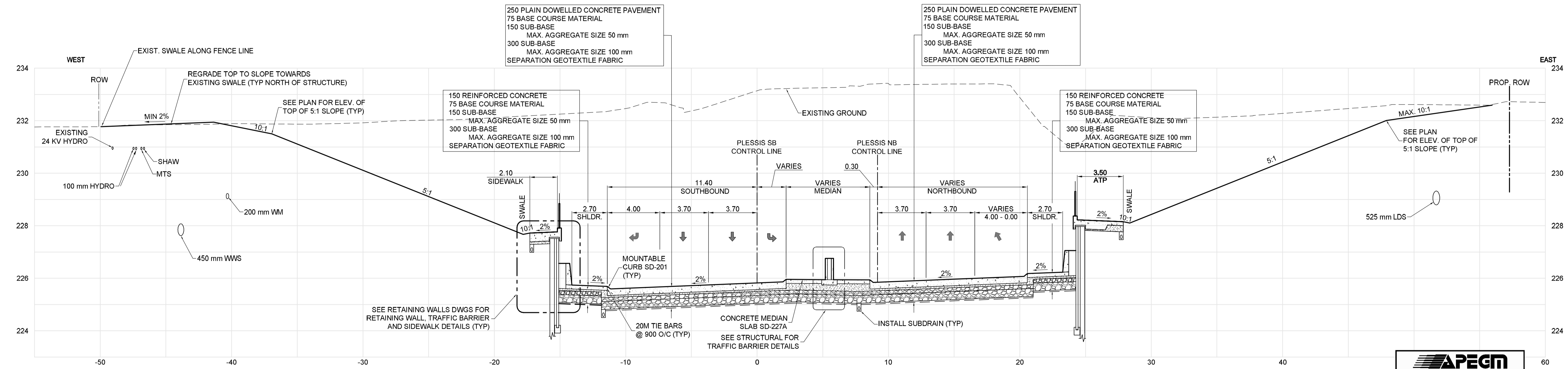


D PLESSIS ROAD - STA. 2+155 (NORTHBOUND)
 CT-0026 Scale: H-150 V-1.75
 CT-0046



E PLESSIS ROAD - STA. 2+225 (SOUTHBOUND)
 CT-0029 Scale: H-150 V-1.75



BID OPPORTUNITY NO. 712-2013

150 WM	WATERMAIN	150 WM	HYDRO	HYDRO	HYDRO	150 WM	WATERMAIN	150 WM
⊕	HYDRANT	⊕	MTS	M.T.S.	MTS	⊕	HYDRANT	⊕
⊗	VALVE	⊗	CONCRETE	CONCRETE	⊗	⊗	VALVE	⊗
⊗	LAND DRAINAGE SEWER	⊗	ASPHALT	ASPHALT	⊗	⊗	LAND DRAINAGE SEWER	⊗
⊗	WASTE WATER SEWER	⊗	PLANING	PLANING	⊗	⊗	WASTE WATER SEWER	⊗
○	MANHOLE	○	SIDEWALK	SIDEWALK	○	○	MANHOLE	○
□	CATCH BASIN	□	PAVING STONES	PAVING STONES	□	□	CATCH BASIN	□
▽	CURB INLET	▽	PROPERTY LINE	PROPERTY LINE	▽	▽	CURB INLET	▽
+	JUNCTIONS	+	DRAINAGE SWALE	DRAINAGE SWALE	+	+	JUNCTIONS	+
⊙	CULVERT	⊙	DRAINAGE ARROW	DRAINAGE ARROW	⊙	⊙	CULVERT	⊙
100 GAS	GAS	100 GAS	CURB RAMP	CURB RAMP	100 GAS	100 GAS	GAS	100 GAS
EXISTING	LEGEND-PLAN	PROPOSED	EXISTING	LEGEND-PLAN	PROPOSED	EXISTING	LEGEND-PROFILE	PROPOSED

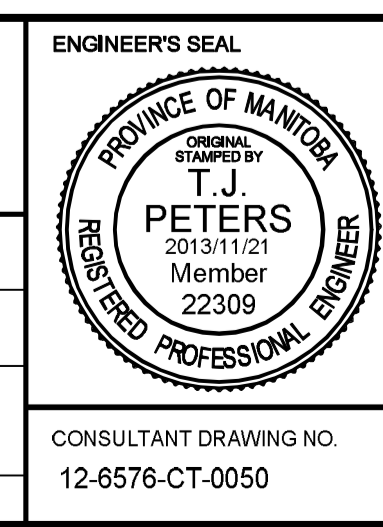
LOCATION APPROVED UNDERGROUND STRUCTURES

SUPV. U/G STRUCTURES COMMITTEE DATE

NOTE:
 LOCATION OF UNDERGROUND STRUCTURES AS SHOWN ARE BASED ON THE BEST INFORMATION AVAILABLE, BUT NO GUARANTEE IS GIVEN THAT ALL EXISTING UTILITIES ARE SHOWN OR THAT THE GIVEN LOCATIONS ARE EXACT. CONFIRMATION OF EXISTENCE AND EXACT LOCATION OF ALL SERVICES MUST BE OBTAINED FROM THE INDIVIDUAL UTILITIES BEFORE PROCEEDING WITH CONSTRUCTION.

B.M. ELEV.					
0	ISSUED FOR TENDER	2013/11/21	TJP		
NO.	REVISIONS	DATE	BY	DATE	

DESIGNED BY	RTP	CHECKED BY	TJP
DRAWN BY	TJH	APPROVED BY	DPK
HOR. SCALE:	AS NOTED	RELEASED FOR CONSTRUCTION BY:	
VERTICAL:		DATE	2013/11/21



THE CITY OF WINNIPEG PUBLIC WORKS DEPARTMENT

PLESSIS ROAD TWINNING AND GRADE SEPARATION AT CN REDDITT SUBDIVISION CONTRACT 3

PLESSIS SECTIONS (3 OF 6)

CITY DRAWING NUMBER U238-2014-2150
 SHEET 50 OF 66

CT-0050

2013-05-22