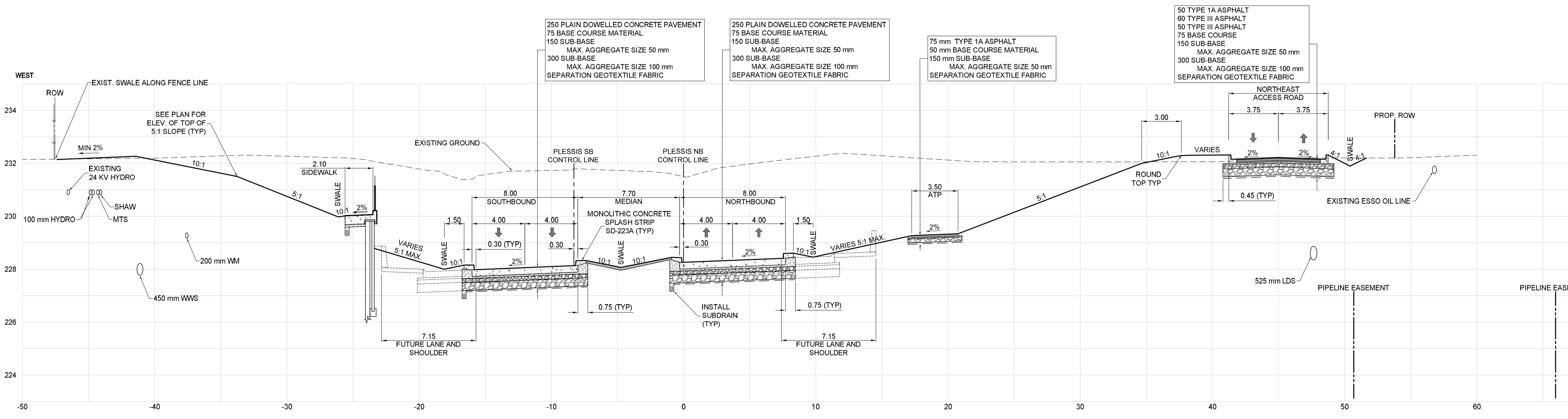


**F PLEISSIS ROAD - STA. 2+290 (NORTHBOUND)**  
 CT-0029  
 CT-0044  
 Scale: H-150 V-1.75



**G PLEISSIS ROAD - STA. 2+320 (NORTHBOUND)**  
 CT-0032  
 CT-0044  
 Scale: H-150 V-1.75



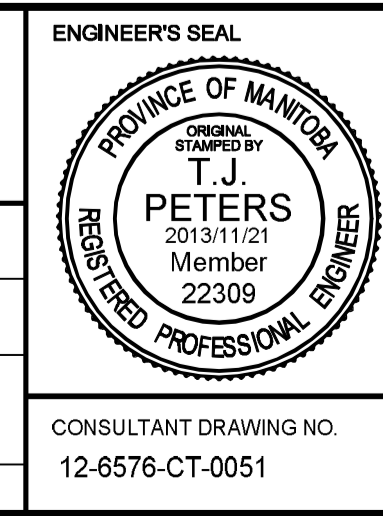
BID OPPORTUNITY NO. 712-2013

|                     |                     |           |           |                |           |                     |                     |          |
|---------------------|---------------------|-----------|-----------|----------------|-----------|---------------------|---------------------|----------|
| 150 WWS             | WATERMAIN           | 150 WWS   | HYDRO     | HYDRO          | HYDRO     | 150 WWS             | WATERMAIN           | 150 WWS  |
| HYDRANT             | HYDRANT             | MTS       | MTS       | CONCRETE       | MTS       | HYDRANT             | HYDRANT             | 150 WWS  |
| VALVE               | VALVE               | 300 LDS   | 300 LDS   | ASPHALT        | 300 LDS   | VALVE               | VALVE               | 300 LDS  |
| LAND DRAINAGE SEWER | LAND DRAINAGE SEWER | 250 WWS   | 250 WWS   | PLANING        | 250 WWS   | LAND DRAINAGE SEWER | LAND DRAINAGE SEWER | 250 WWS  |
| WASTE WATER SEWER   | WASTE WATER SEWER   | MANHOLE   | MANHOLE   | SIDEWALK       | MANHOLE   | WASTE WATER SEWER   | WASTE WATER SEWER   | 250 WWS  |
| CATCH BASIN         | CATCH BASIN         | JUNCTIONS | JUNCTIONS | PAVING STONES  | JUNCTIONS | CATCH BASIN         | CATCH BASIN         | 250 WWS  |
| CURB INLET          | CURB INLET          | CULVERT   | CULVERT   | PROPERTY LINE  | CULVERT   | CURB INLET          | CURB INLET          | 250 WWS  |
| 100 GAS             | 100 GAS             | EXISTING  | EXISTING  | DRAINAGE SWALE | EXISTING  | 100 GAS             | 100 GAS             | 250 WWS  |
| LEGEND-PLAN         | LEGEND-PLAN         | PROPOSED  | PROPOSED  | DRAINAGE ARROW | PROPOSED  | LEGEND-PLAN         | LEGEND-PLAN         | PROPOSED |
| LEGEND-PROFILE      | LEGEND-PROFILE      | EXISTING  | EXISTING  | CURB RAMP      | EXISTING  | LEGEND-PROFILE      | LEGEND-PROFILE      | PROPOSED |

**LOCATION APPROVED UNDERGROUND STRUCTURES**  
 SUPV. U/G STRUCTURES COMMITTEE DATE  
 NOTE:  
 LOCATION OF UNDERGROUND STRUCTURES AS SHOWN ARE BASED ON THE BEST INFORMATION AVAILABLE, BUT NO GUARANTEE IS GIVEN THAT ALL EXISTING UTILITIES ARE SHOWN OR THAT THE GIVEN LOCATIONS ARE EXACT. CONFIRMATION OF EXISTENCE AND EXACT LOCATION OF ALL SERVICES MUST BE OBTAINED FROM THE INDIVIDUAL UTILITIES BEFORE PROCEEDING WITH CONSTRUCTION.

|            |                   |            |     |
|------------|-------------------|------------|-----|
| B.M. ELEV. |                   |            |     |
| 0          | ISSUED FOR TENDER | 2013/11/21 | TJP |
| NO.        | REVISIONS         | DATE       | BY  |
|            |                   |            |     |

|             |          |                               |            |
|-------------|----------|-------------------------------|------------|
| DESIGNED BY | RTP      | CHECKED BY                    | TJP        |
| DRAWN BY    | TJH      | APPROVED BY                   | DPK        |
| HOR. SCALE: | AS NOTED | RELEASED FOR CONSTRUCTION BY: |            |
| VERTICAL:   |          | DATE                          | 2013/11/21 |



**THE CITY OF WINNIPEG PUBLIC WORKS DEPARTMENT**

PLEISSIS ROAD TWINNING AND GRADE SEPARATION AT CN REDDITT SUBDIVISION CONTRACT 3

PLEISSIS SECTIONS (4 OF 6)

CITY DRAWING NUMBER U238-2014-2151  
 SHEET 51 OF 66

CONSULTANT DRAWING NO. 12-6576-CT-0051

**CT-0051**

2013-05-22