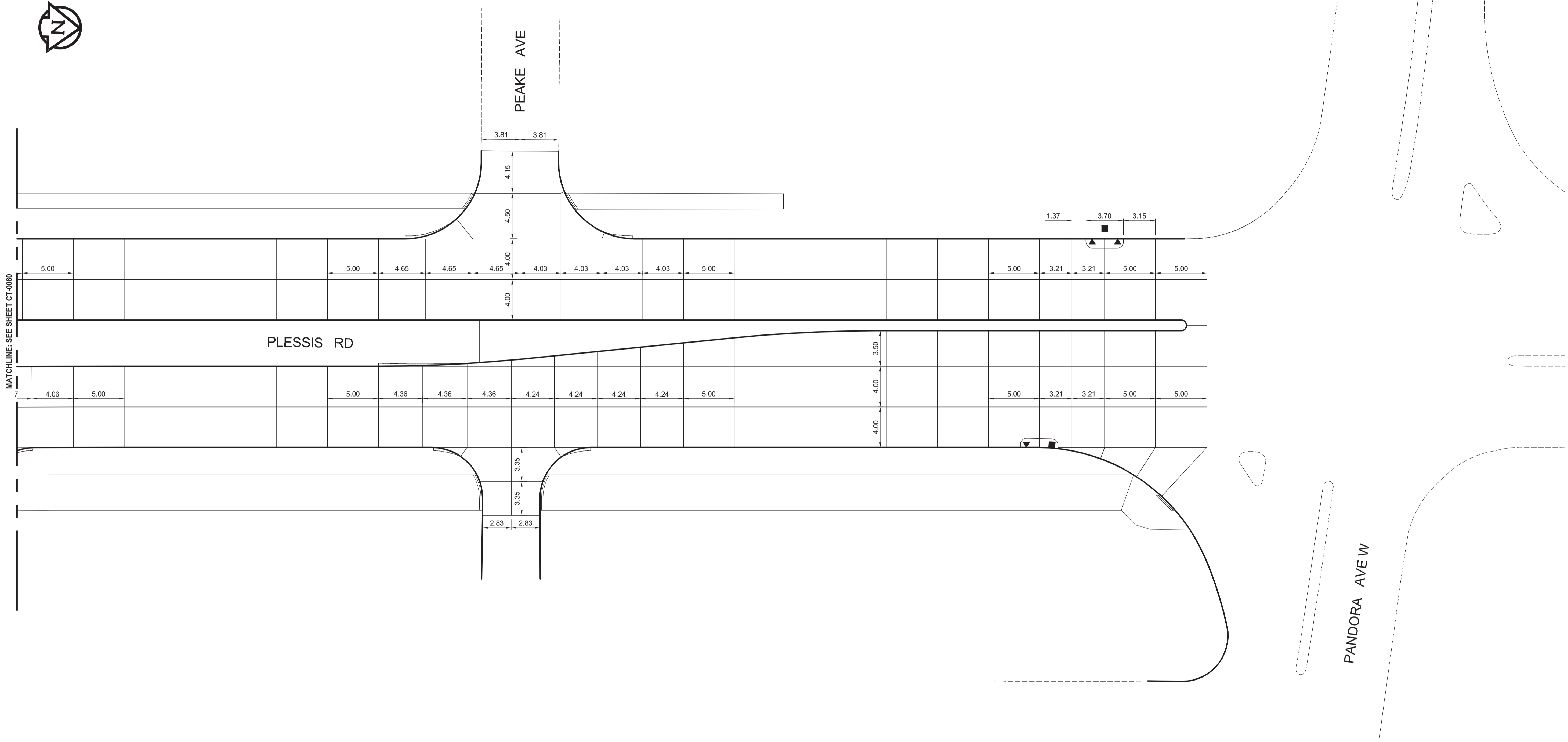


MATCHLINE: SEE SHEET CT-0060



PANDORA AVE W



BID OPPORTUNITY NO. 712-2013

150 WM	WATERMAIN	150 WM	HYDRO	HYDRO	150 WM	WATERMAIN	150 WM
⊕	HYDRANT	⊕	MTS	MTS	⊕	HYDRANT	⊕
⊗	VALVE	⊗	CONCRETE	CONCRETE	⊗	VALVE	⊗
⊗	LAND DRAINAGE SEWER	⊗	ASPHALT	ASPHALT	⊗	LAND DRAINAGE SEWER	⊗
⊗	WASTE WATER SEWER	⊗	PLANING	PLANING	⊗	WASTE WATER SEWER	⊗
○	MANHOLE	○	SIDEWALK	SIDEWALK	○	MANHOLE	○
□	CATCH BASIN	□	PAVING STONES	PAVING STONES	□	CATCH BASIN	□
▽	CURB INLET	▽	PROPERTY LINE	PROPERTY LINE	▽	CURB INLET	▽
+	JUNCTIONS	+	DRAINAGE SWALE	DRAINAGE SWALE	+	JUNCTIONS	+
—	CULVERT	—	DRAINAGE ARROW	DRAINAGE ARROW	—	CULVERT	—
100 GAS	GAS	100 GAS	CURB RAMP	CURB RAMP	100 GAS	GAS	100 GAS
EXISTING	LEGEND-PLAN	PROPOSED	EXISTING	LEGEND-PLAN	PROPOSED	EXISTING	LEGEND-PROFILE

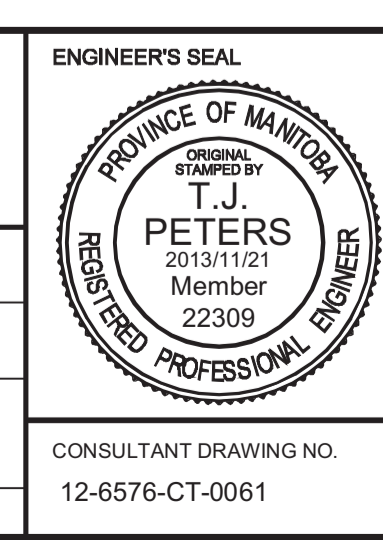
LOCATION APPROVED UNDERGROUND STRUCTURES

SUPV. U/G STRUCTURES COMMITTEE _____ DATE _____

NOTE:
LOCATION OF UNDERGROUND STRUCTURES AS SHOWN ARE BASED ON THE BEST INFORMATION AVAILABLE. BUT NO GUARANTEE IS GIVEN THAT ALL EXISTING UTILITIES ARE SHOWN OR THAT THE GIVEN LOCATIONS ARE EXACT. CONFIRMATION OF EXISTENCE AND EXACT LOCATION OF ALL SERVICES MUST BE OBTAINED FROM THE INDIVIDUAL UTILITIES BEFORE PROCEEDING WITH CONSTRUCTION.

B.M. ELEV.			
NO.	ISSUED FOR TENDER	2013/11/21	TJP
NO.	REVISIONS	DATE	BY

DESIGNED BY	JMS	CHECKED BY	TJP
DRAWN BY	TJH	APPROVED BY	DPK
HOR. SCALE:	1:200	RELEASED FOR CONSTRUCTION BY:	
VERTICAL:		DATE	2013/11/21



THE CITY OF WINNIPEG PUBLIC WORKS DEPARTMENT

PLESSIS ROAD TWINNING AND GRADE SEPARATION AT CN REDDITT SUBDIVISION CONTRACT 3

CITY DRAWING NUMBER U238-2014-2161
SHEET 61 OF 66

CONCRETE JOINT LAYOUT (6 OF 6)

CT-0061

CONSULTANT DRAWING NO. 12-6576-CT-0061

2013-10-08