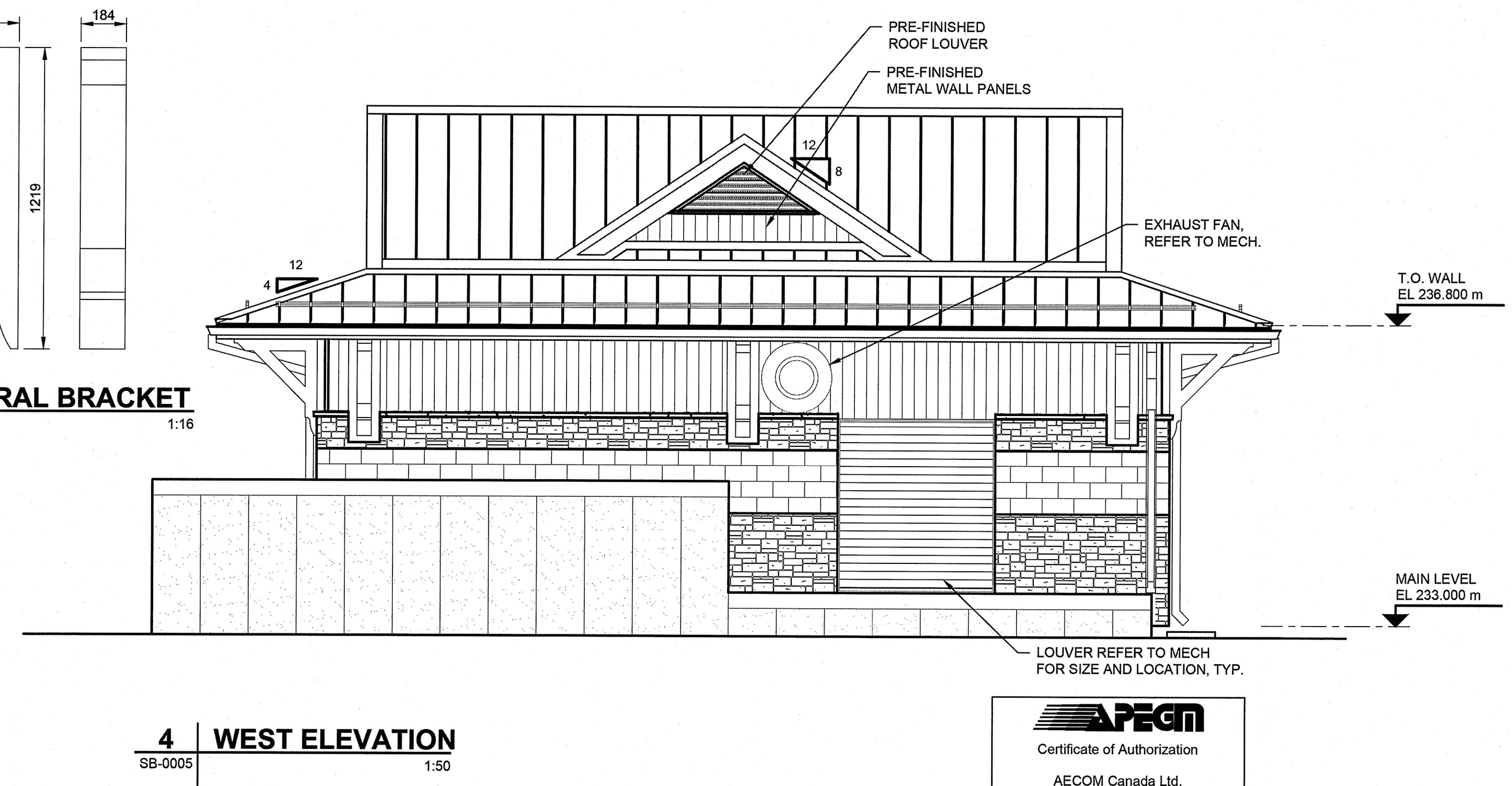
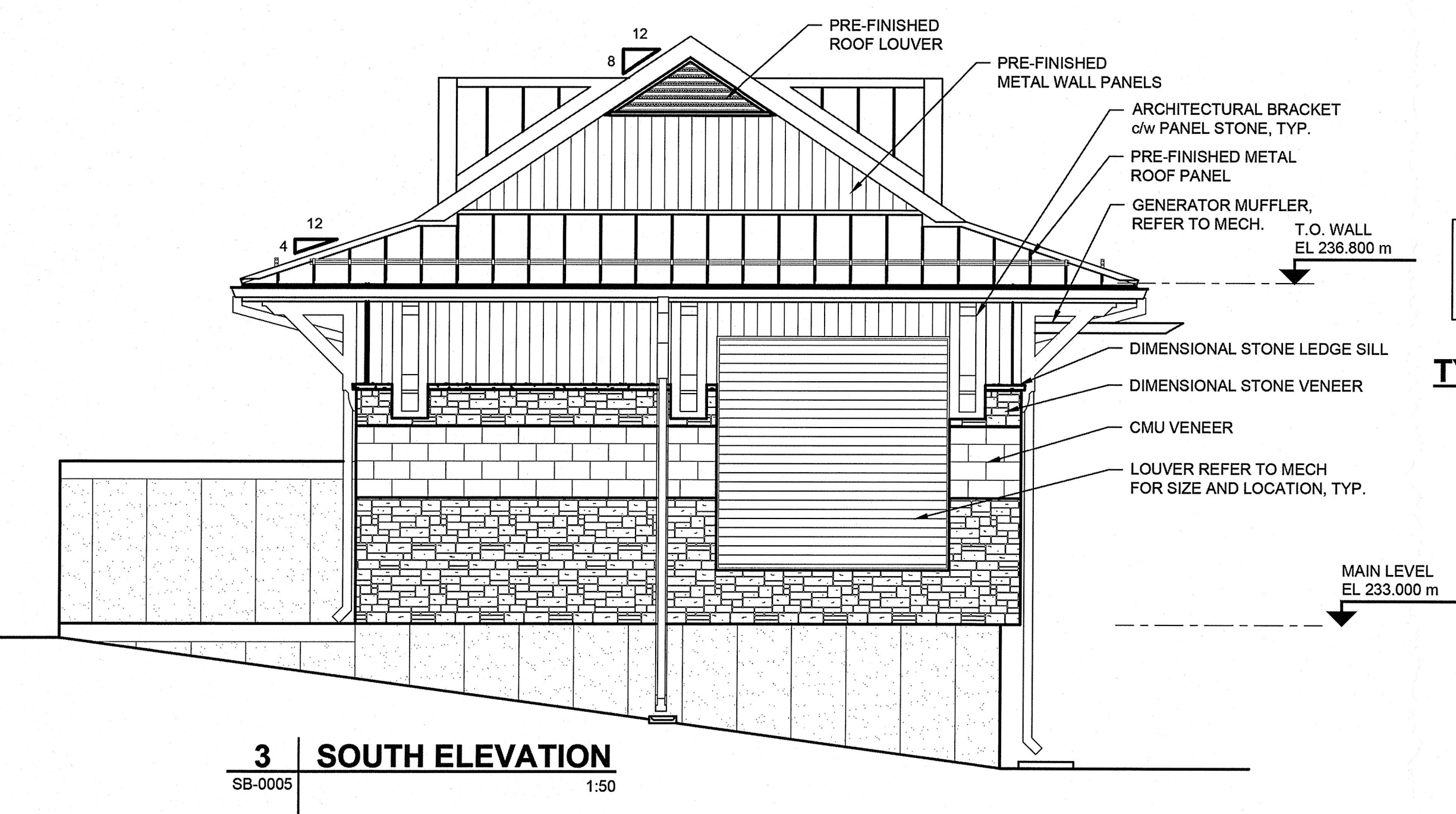
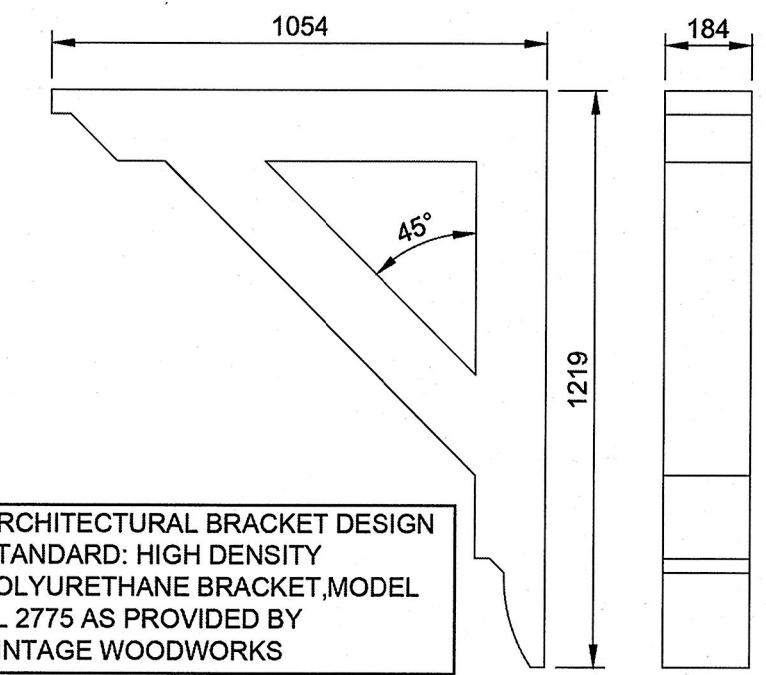


APPLY GRAFFITI RESISTANT COATING TO ALL LIMESTONE VENEER, CMU VENEER, STONE LEDGE SILL, AND CFI WALL BOARD

ARCHITECTURAL BRACKET DESIGN STANDARD: HIGH DENSITY POLYURETHANE BRACKET, MODEL BL 2775 AS PROVIDED BY VINTAGE WOODWORKS

**TYPICAL ARCHITECTURAL BRACKET**



**APECM**  
Certificate of Authorization  
AECOM Canada Ltd.  
No. 4671 Date: 2013/10/15

BID OPPORTUNITY NO. 712-2013

LOCATION APPROVED UNDERGROUND STRUCTURES		B.M. ELEV.
SUPV. UG STRUCTURES COMMITTEE	DATE	
NOTE: LOCATION OF UNDERGROUND STRUCTURES AS SHOWN ARE BASED ON THE BEST INFORMATION AVAILABLE BUT NO GUARANTEE IS GIVEN THAT ALL EXISTING UTILITIES ARE SHOWN OR THAT THE GIVEN LOCATIONS ARE EXACT. CONFIRMATION OF EXISTENCE AND EXACT LOCATION OF ALL SERVICES MUST BE OBTAINED FROM THE INDIVIDUAL UTILITIES BEFORE PROCEEDING WITH CONSTRUCTION.		
0	ISSUED FOR TENDER	13/10/15 KK
NO.	REVISIONS	DATE BY

<b>AECOM</b>	
DESIGNED BY KK	CHECKED BY M.B.
DRAWN BY KK	APPROVED BY E.S.
HOR. SCALE: VERTICAL:	AS NOTED AS NOTED
DATE 2013-xx-xx	DATE 2013-xx-xx

ENGINEER'S SEAL	
CONSULTANT DRAWING NO. SB-2325 ELEVATIONS.DWG	

**THE CITY OF WINNIPEG**  
PUBLIC WORKS DEPARTMENT

PLESSIS ROAD TWINNING AND GRADE SEPARATION AT CN REDDITT SUBDIVISION CONTRACT 3		CITY DRAWING NUMBER U238-2014-2325
STRUCTURAL SUPERSTRUCTURE EXTERIOR ELEVATIONS		SHEET 05 OF 08
		<b>SB-0005</b>