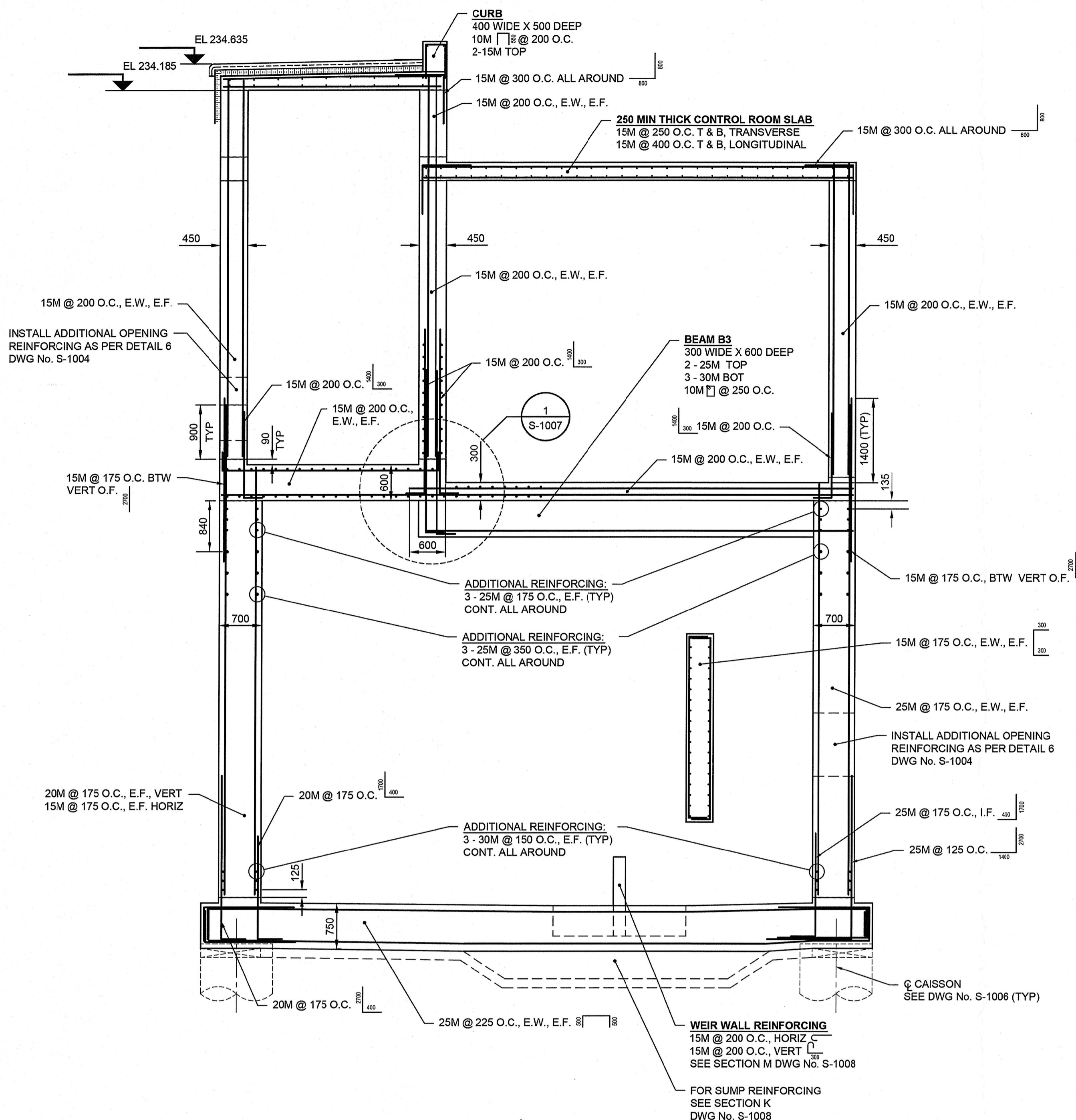
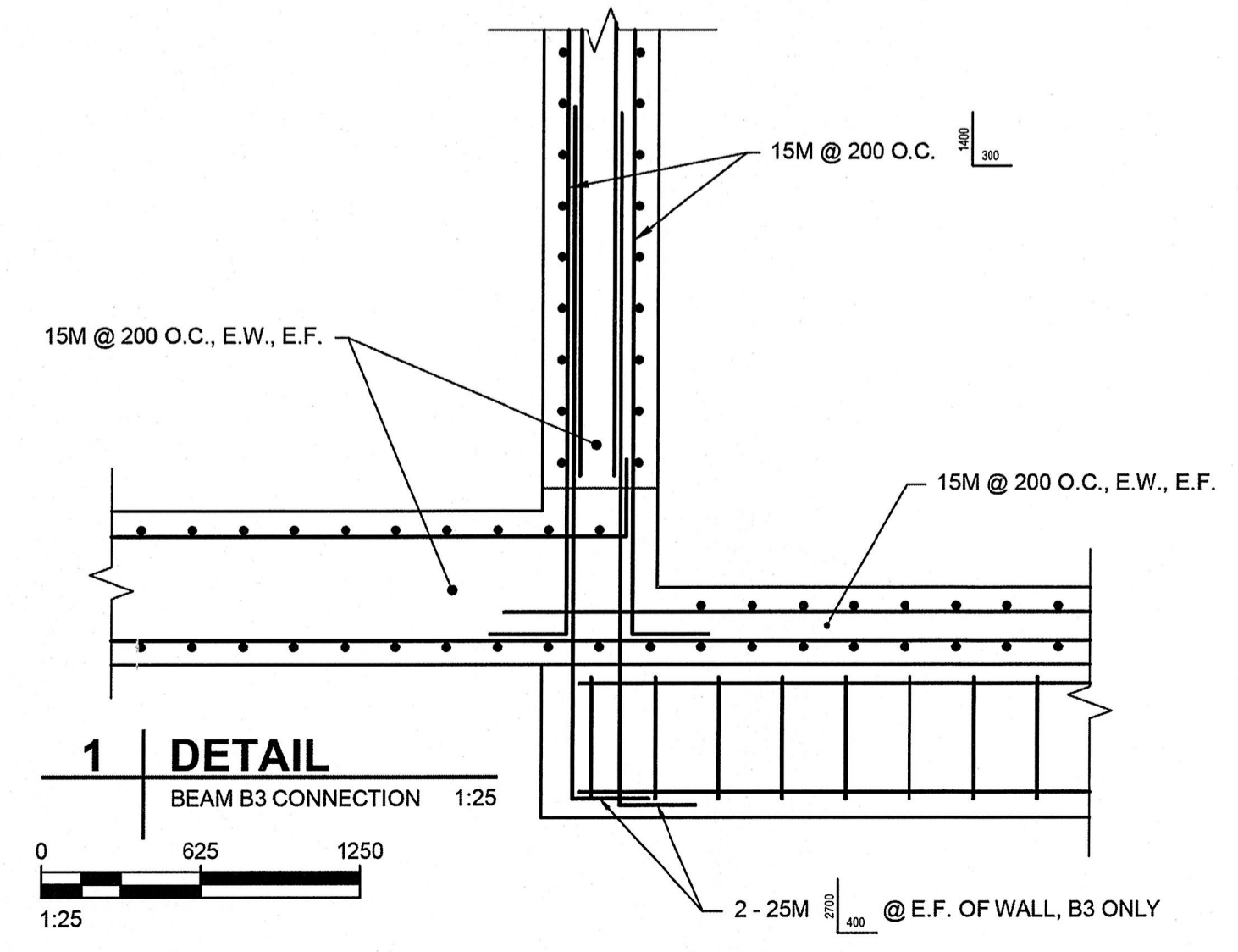


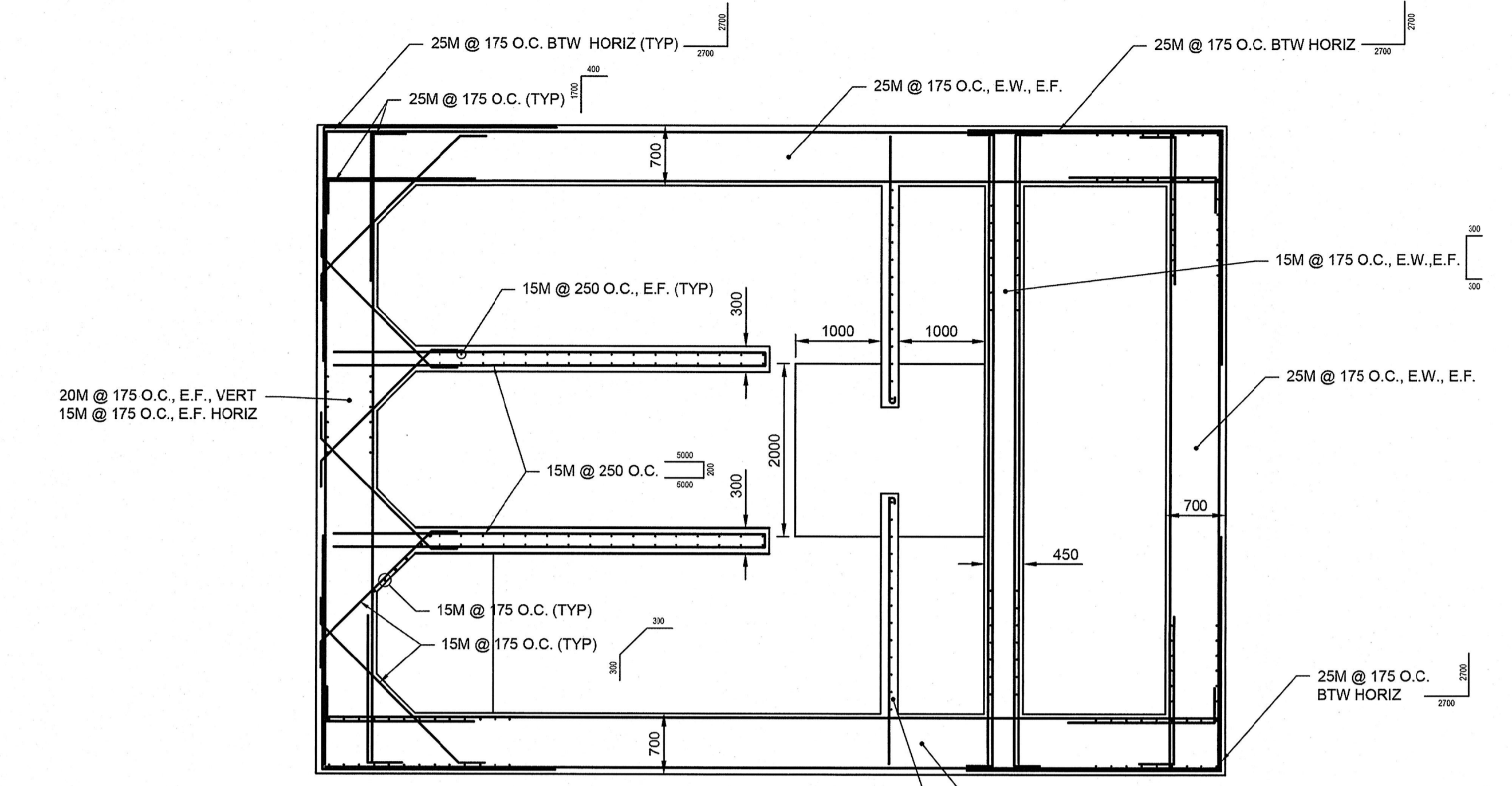
AL - 840294  
E033-00-11  
AECOM REVIEW DRAFT CHK  
AECOM STANDARDS



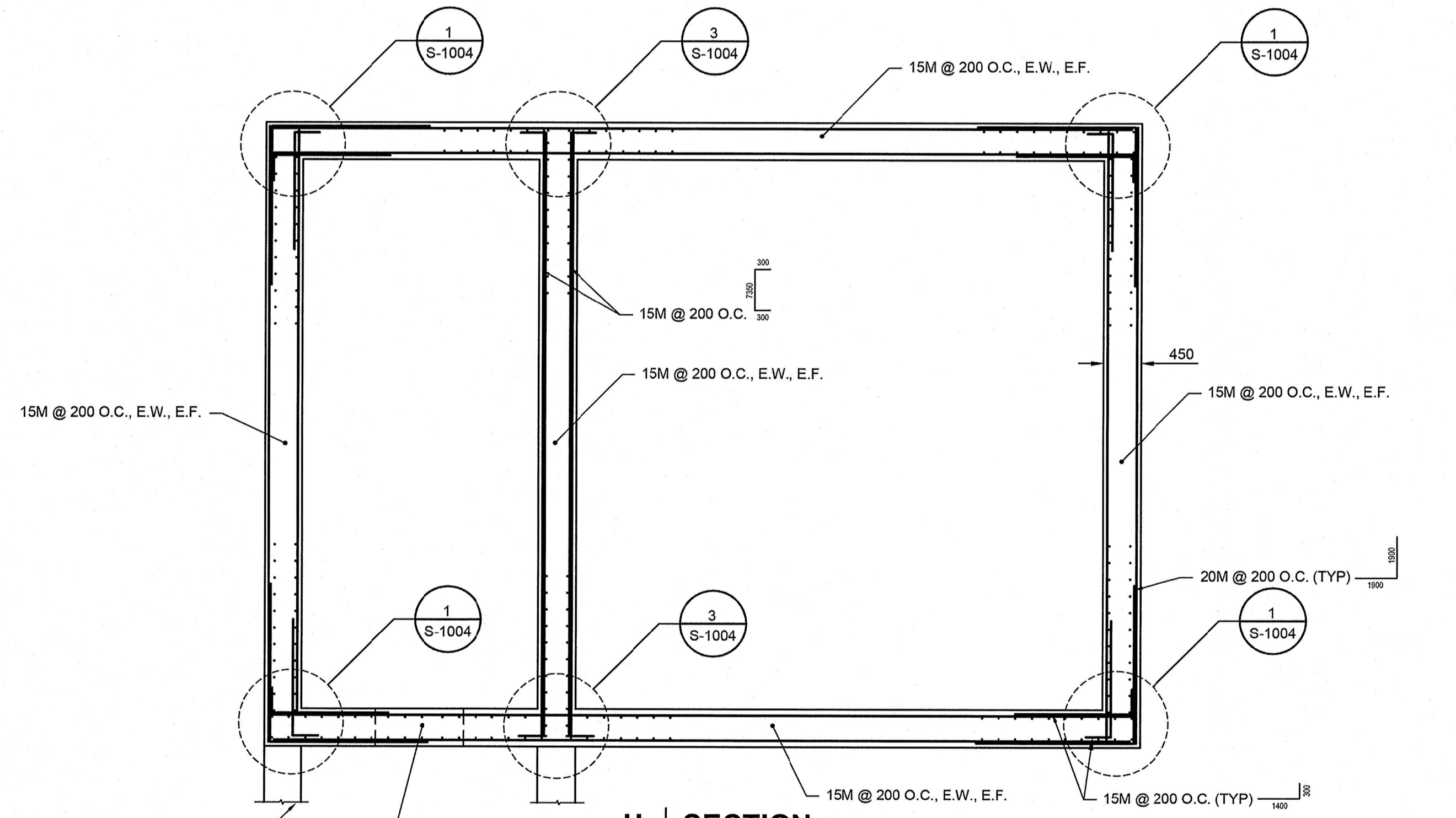
**F SECTION**  
S-1001  
WALL REINFORCING  
1:50



**1 DETAIL**  
BEAM B3 CONNECTION 1:25



**G SECTION**  
S-1003  
WALL REINFORCING  
1:50  
NOTE: TOP OF SLAB EL. VARIES. SEE DWG No. S-1002



**H SECTION**  
S-1003  
WALL REINFORCING  
1:50  
FOR CONTINUATION SEE SECTION 6 DWG No. S-1005  
INSTALL ADDITIONAL OPENING REINFORCING AS PER DETAIL 6 DWG No. S-1004

**METRIC**  
WHOLE NUMBERS INDICATE MILLIMETRES  
DECIMALIZED NUMBERS INDICATE METRES



**LOCATION APPROVED UNDERGROUND STRUCTURES**  
SUPV. U/G STRUCTURES COMMITTEE DATE  
**NOTE:**  
LOCATION OF UNDERGROUND STRUCTURES AS SHOWN ARE BASED ON THE BEST INFORMATION AVAILABLE, BUT NO GUARANTEE IS GIVEN THAT ALL EXISTING UTILITIES ARE SHOWN OR THAT THE GIVEN LOCATIONS ARE EXACT. CONFIRMATION OF EXISTENCE AND EXACT LOCATION OF ALL SERVICES MUST BE OBTAINED FROM THE INDIVIDUAL UTILITIES BEFORE PROCEEDING WITH CONSTRUCTION.

NO.	REVISIONS	DATE	BY
0	ISSUED FOR TENDER	13/10/15	WJd

<b>AECOM</b>	
DESIGNED BY: JAT	CHECKED BY: <i>[Signature]</i>
DRAWN BY: WJd	APPROVED BY: <i>[Signature]</i>
HOR. SCALE: AS NOTED	RELEASED FOR CONSTRUCTION BY:
VERTICAL: AS NOTED	DATE

ENGINEER'S SEAL  
PROVINCE OF MANITOBA  
S.B. BISWANGER  
REGISTERED PROFESSIONAL ENGINEER  
CONSULTANT DRAWING NO. 60273041-SHT-01-Con3-S-1007

**THE CITY OF WINNIPEG PUBLIC WORKS DEPARTMENT**

PLESSIS ROAD TWINNING AND GRADE SEPARATION AT CN REDDITT SUBDIVISION CONTRACT 3

PUMPING STATION SUBSTRUCTURE REINFORCING SECTIONS 1

CITY DRAWING NUMBER U238-2014-2337  
SHEET 7 OF 10

**S-1007**

BID OPPORTUNITY NO. 712-2013