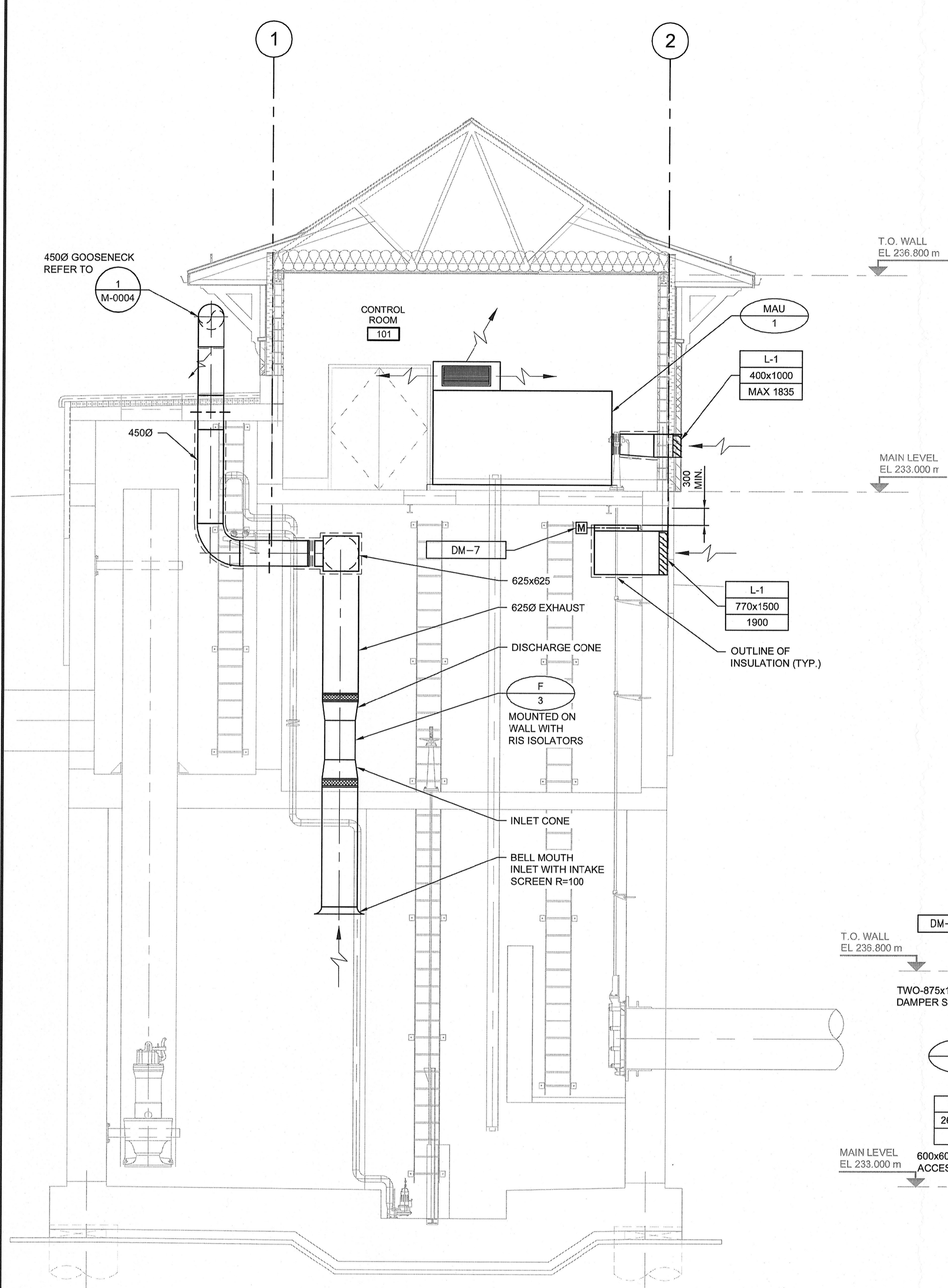
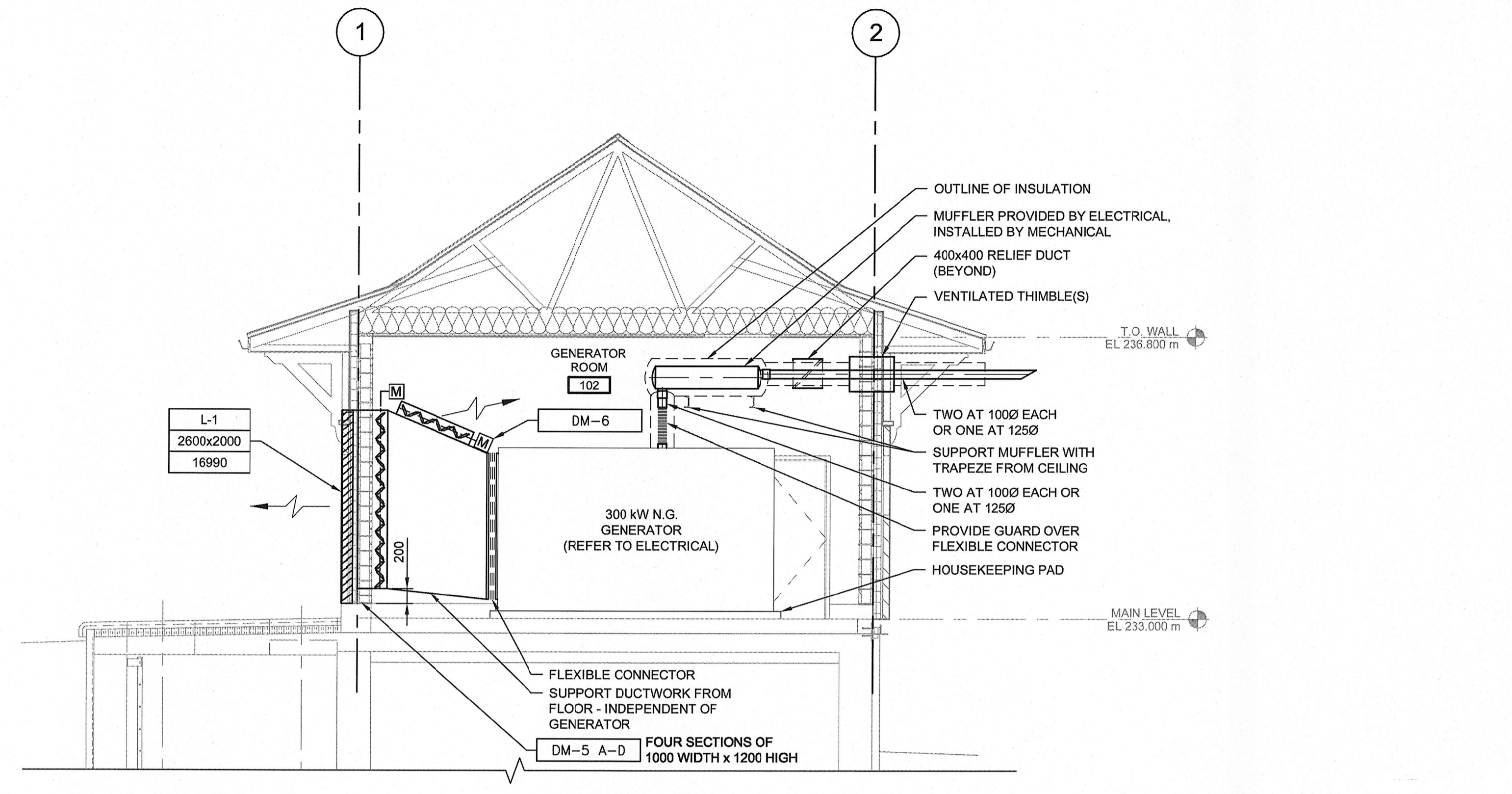


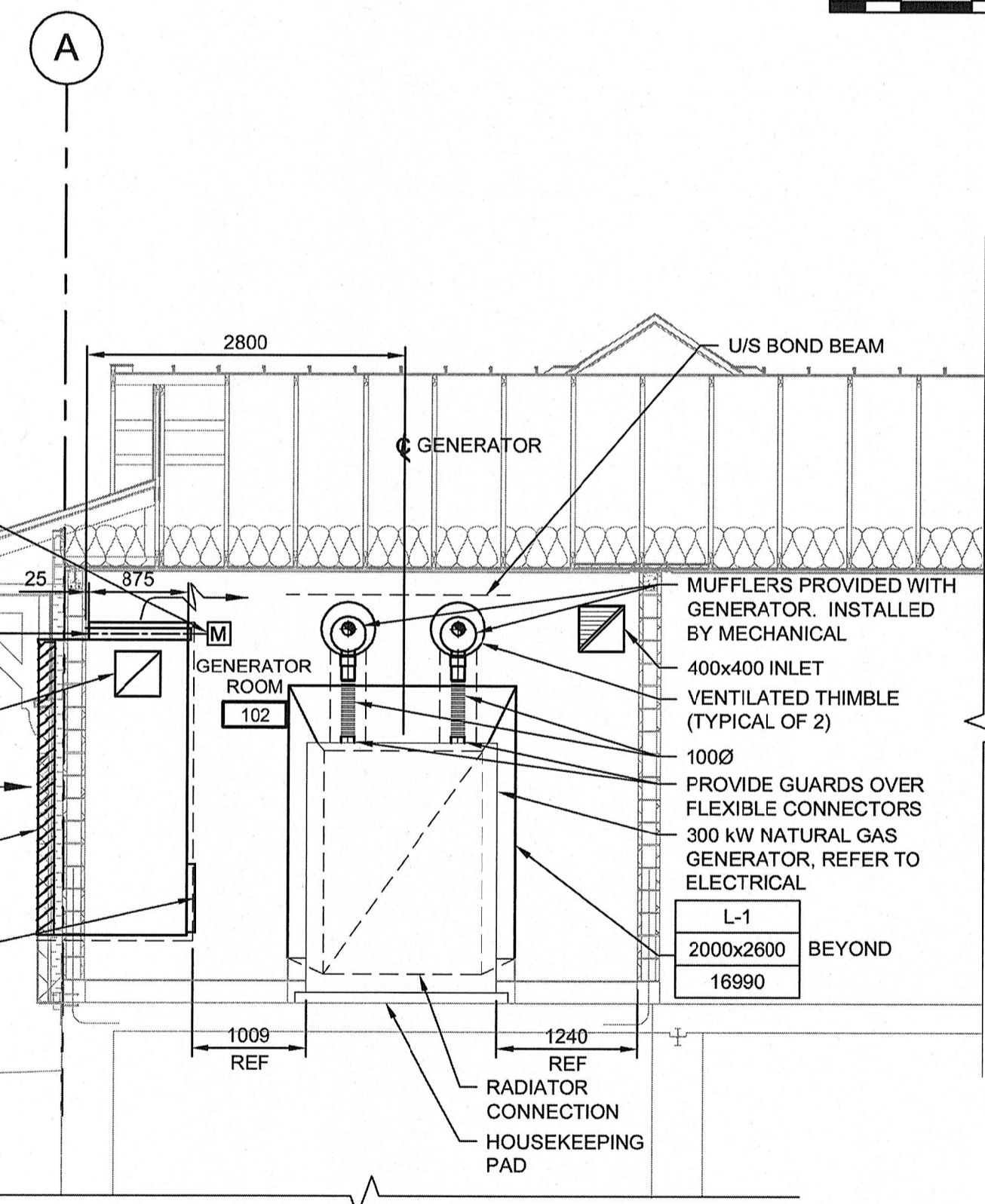
A1 - 844594
 2013-07-16
 AECOM REVIEW DRFT CHK
 C:\DOCUMENTS AND SETTINGS\STEPHENS\APPLICATION DATA\AUTODESK\2012\DW\PLOTTERS\LOT STYLE\1056-H-BAC.CB
 P:\60273041\000-CADD\02-SHEETS\60273041-SHT-01-C03-M-0003.DWG



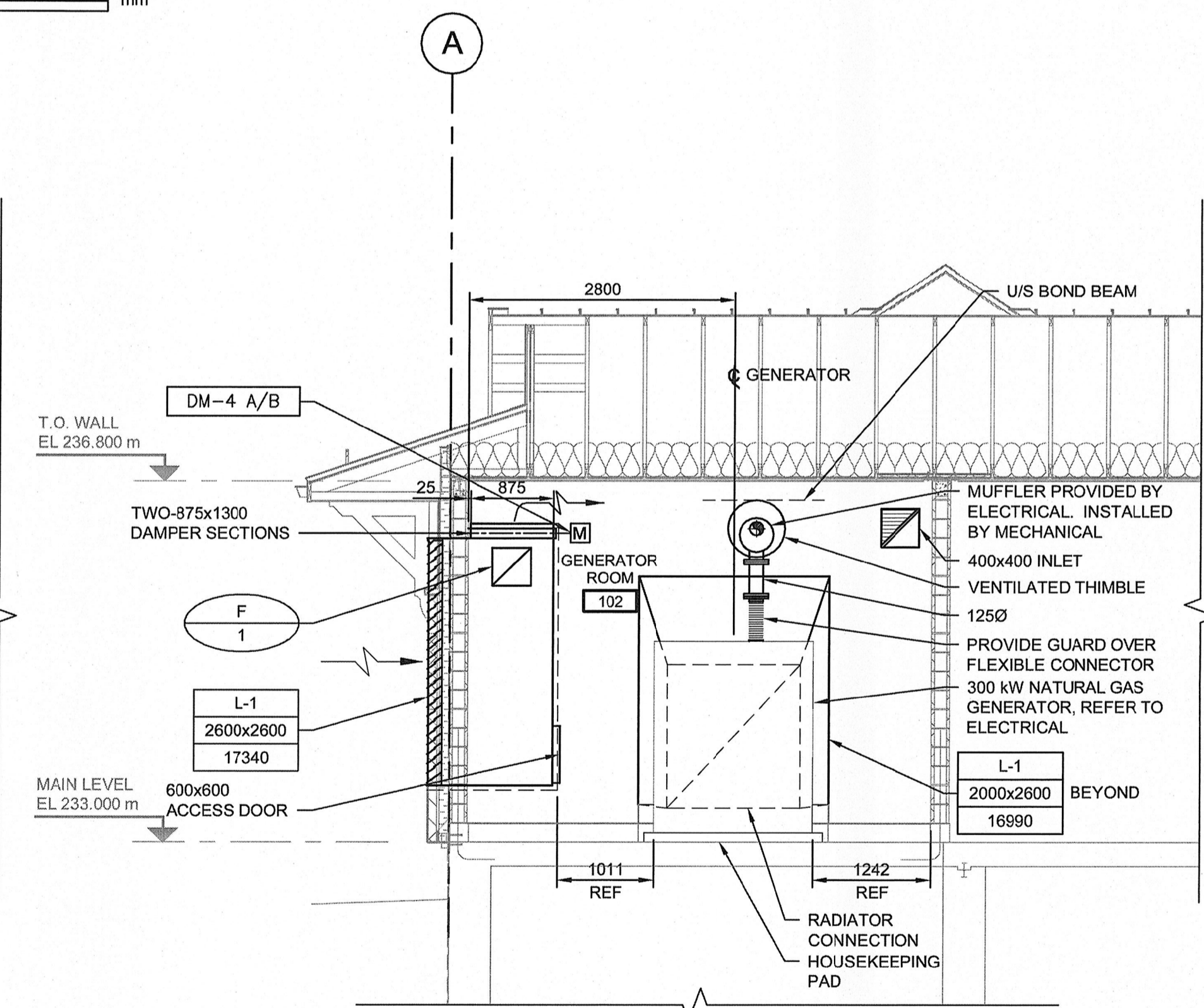
A SECTION
 M-0003 1:50
 0 1250 2500 mm



B SECTION
 M-0003 1:50
 0 1250 2500 mm



C SECTION
 M-0003 1:50
 BASED ON KOHLER MODEL 300R2XB
 0 1250 2500 mm

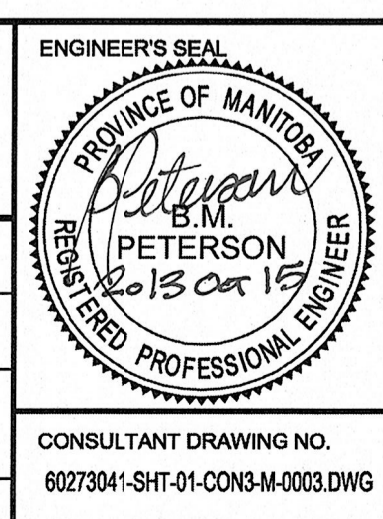


D SECTION
 M-0003 1:50
 BASED ON CUMMINS MODEL GTA19 G CC
 0 1250 2500 mm



LOCATION APPROVED UNDERGROUND STRUCTURES SUPV. U/G STRUCTURES COMMITTEE DATE		B.M. ELEV.
NOTE: LOCATION OF UNDERGROUND STRUCTURES AS SHOWN ARE BASED ON THE BEST INFORMATION AVAILABLE, BUT NO GUARANTEE IS GIVEN THAT ALL EXISTING UTILITIES ARE SHOWN OR THAT THE GIVEN LOCATIONS ARE EXACT. CONFIRMATION OF EXISTENCE AND EXACT LOCATION OF ALL SERVICES MUST BE OBTAINED FROM THE INDIVIDUAL UTILITIES BEFORE PROCEEDING WITH CONSTRUCTION.		NO. REVISIONS DATE BY
0	ISSUED FOR TENDER	2013/10/15 DRL

AECOM	
DESIGNED BY RT	CHECKED BY CC
DRAWN BY DRL	APPROVED BY
HOR. SCALE: AS NOTED	RELEASED FOR CONSTRUCTION BY:
VERTICAL:	DATE 2013-07-12



THE CITY OF WINNIPEG PUBLIC WORKS DEPARTMENT		CITY DRAWING NUMBER U238-2014-2343
PLESSIS ROAD TWINNING AND GRADE SEPARATION AT CN REDDITT SUBDIVISION CONTRACT 3		SHEET 03 OF 05
MECHANICAL SECTIONS		M-0003

BID OPPORTUNITY NO. 712-2013