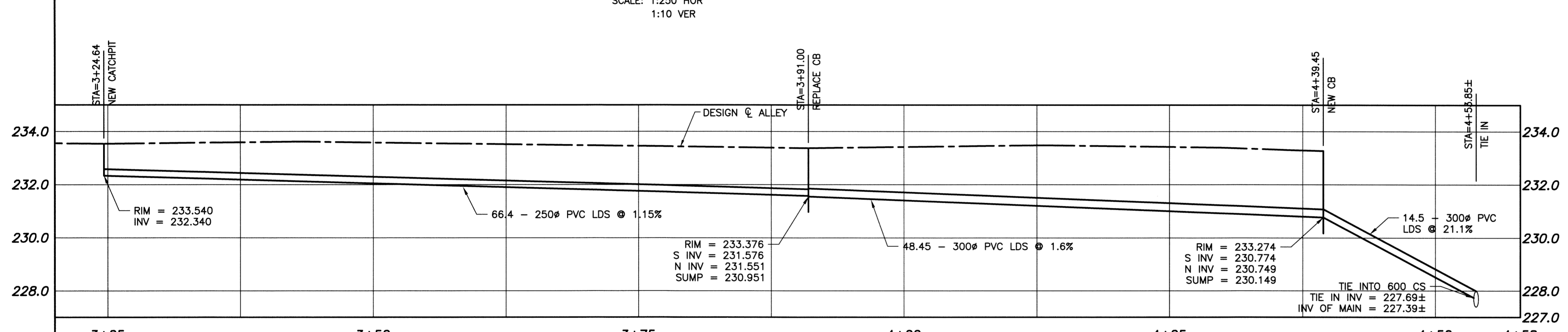
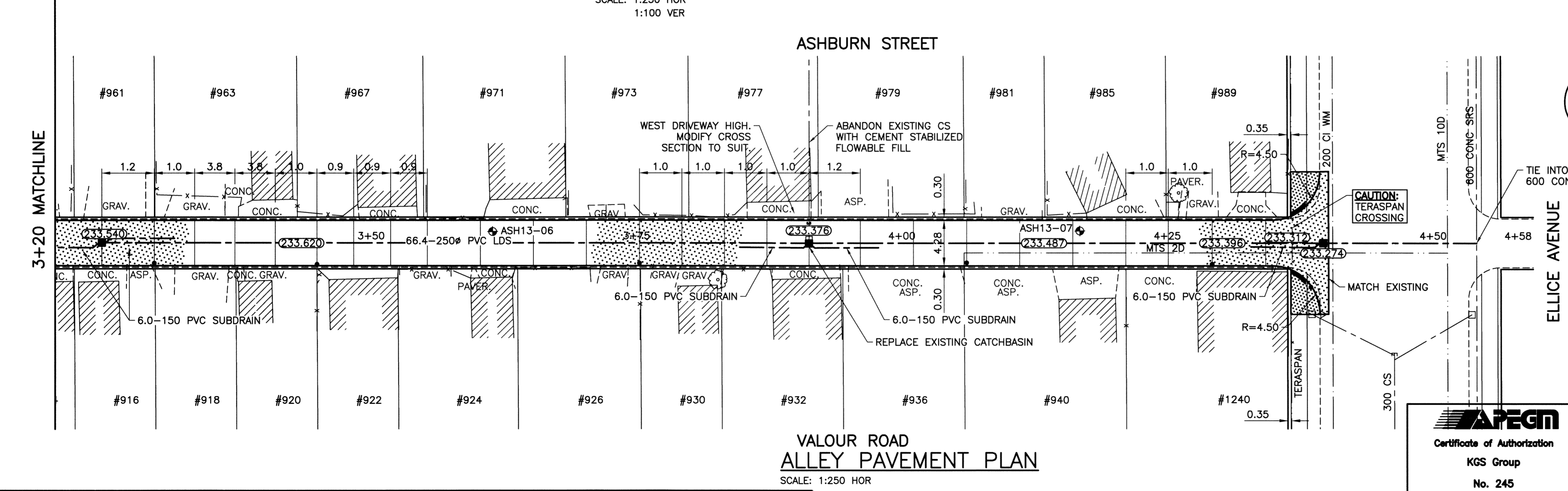


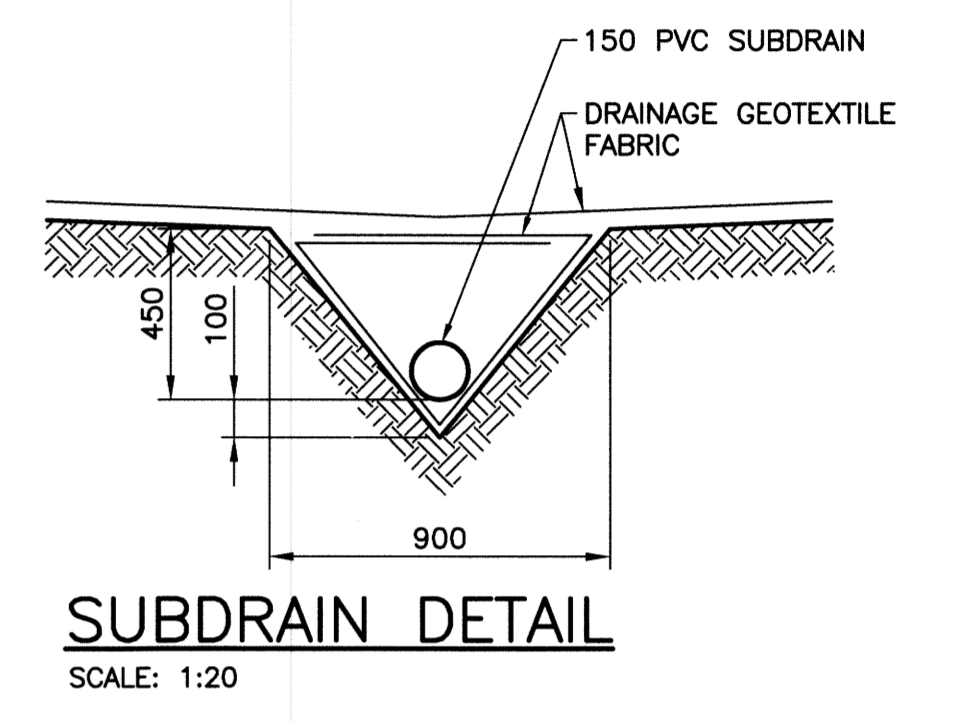
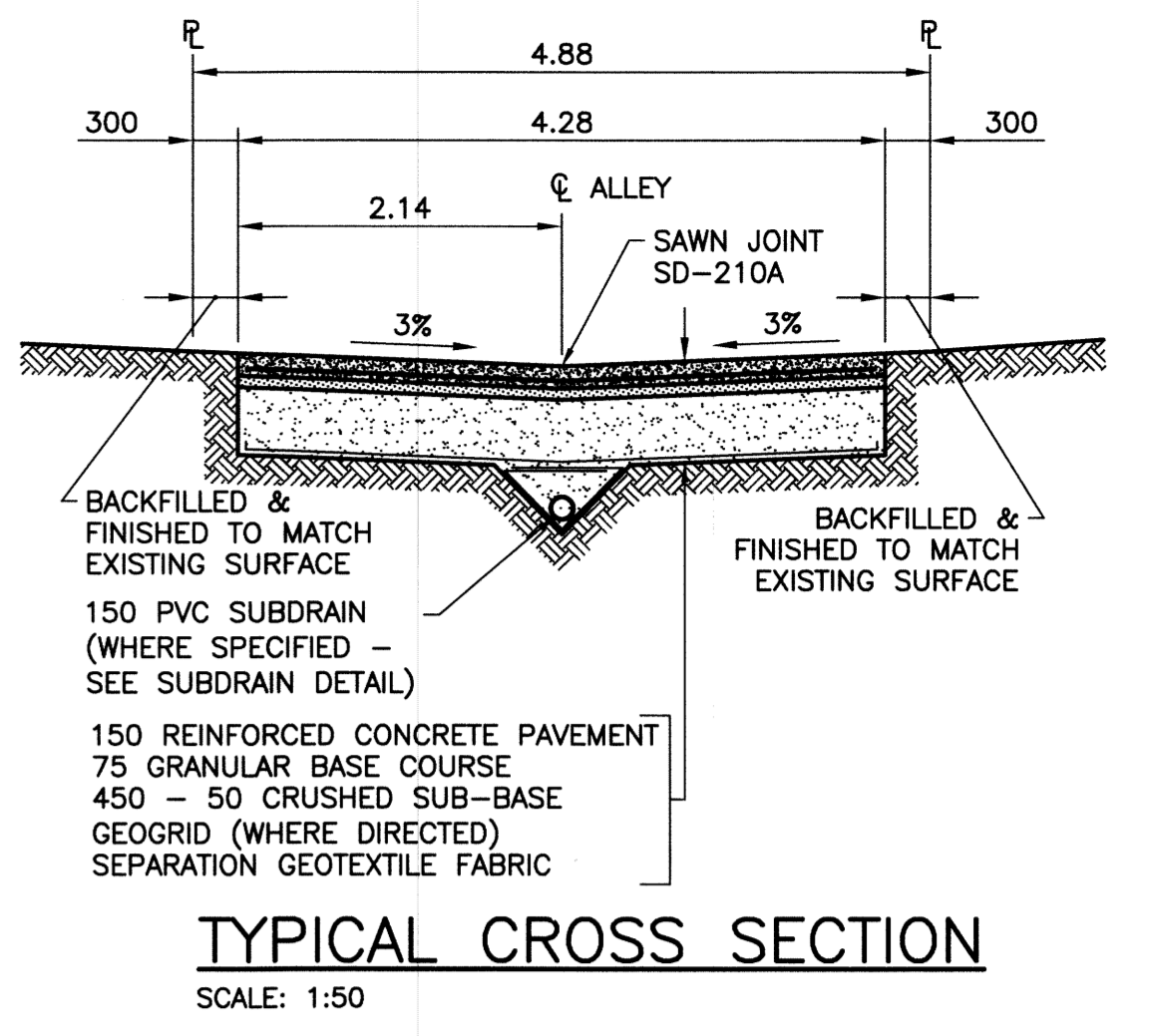
**ALLEY PAVEMENT PROFILE**  
SCALE: 1:250 HOR  
1:10 VER



**SEWER PROFILE**  
SCALE: 1:250 HOR  
1:100 VER

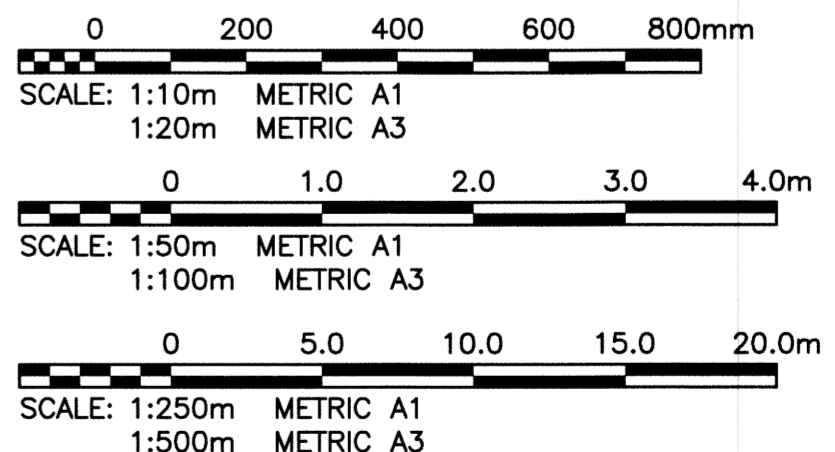


**VALOUR ROAD ALLEY PAVEMENT PLAN**  
SCALE: 1:250 HOR



- NOTES:**
- STATION CHAINAGE IS BASED ON CENTERLINE OF ALLEY RIGHT OF WAY.
  - ADJUST MH AND CB RIMS TO NEW GRADES.
  - PLUG SUBDRAINS AT TERMINAL ENDS.
  - REGRADE EXISTING PRIVATE SIDEWALKS AS REQUIRED.
  - INSTALLATION OF LIP CURBS AND THEIR EXTENTS TO BE DETERMINED BY THE CONTRACT ADMINISTRATOR.
  - LIGHT STANDARDS, HYDRO POLES AND ANCHORS MAY REQUIRE TEMPORARY SUPPORT/REMOVAL OR REPLACEMENT AT THE CONTRACTOR'S EXPENSE.
  - ISOLATE ALL POLES, BASES AND PILES WITHIN ALLEY RIGHT OF WAY (SD-228C)
  - AVOID DAMAGE TO EXISTING TREES WITHIN THE LIMITS OF CONSTRUCTION.

**WARNING**  
NOTIFY THE GAS COMPANY OF THE PROPOSED LOCATION OF EXCAVATION. TAKE PRECAUTION TO AVOID DAMAGE TO GAS COMPANY INSTALLATIONS. SEE PROVINCIAL REGULATION 210/72 FOR DETAILS.



**METRIC**  
WHOLE NUMBERS INDICATE MILLIMETRES  
DECIMALIZED NUMBERS INDICATE METRES

**PROPERTY LIMITS DELINEATION**  
DELINEATION OF PROPERTY LIMITS AS SHOWN ON THIS DWG DOES NOT REPRESENT A "LEGAL SURVEY". KGS GROUP MAKES NO REPRESENTATION OR WARRANTY AS TO THE ACCURACY OF PROPERTY LIMITS DELINEATED ON THIS DWG, NOR ON THE DIMENSIONAL ACCURACY OF DWG FEATURES RELATIVE TO THOSE PROPERTY LIMITS.



300 LDS	LAND DRAINAGE SEWER	300 LDS		TEST HOLE	
250 WWS	WASTE WATER SEWER	250 WWS		GUY WIRE	
	GAS			LIGHT STANDARD	
	HYDRO			BACK OF CURB	
	M.T.S.			CONCRETE	
150 WM	WATERMAIN	150 WM		ASPHALT	
	HYDRANT			CONCRETE	
	VALVE			ASPHALT	
	MANHOLE			PROPERTY LINE	
	CATCH BASIN			SURVEY BAR	
	CURB INLET			GEODETIC BENCHMARK	
	POLES			ELEVATION	231.334
EXISTING	LEGEND-PLAN	PROPOSED	EXISTING	LEGEND-PROFILE	PROPOSED

**LOCATION APPROVED UNDERGROUND STRUCTURES**

SUPV. U/G STRUCTURES COMMITTEE DATE

**NOTE:**  
LOCATION OF UNDERGROUND STRUCTURES AS SHOWN ARE BASED ON THE BEST INFORMATION AVAILABLE BUT NO GUARANTEE IS GIVEN THAT ALL EXISTING UTILITIES ARE SHOWN OR THAT THE GIVEN LOCATIONS ARE EXACT. CONFIRMATION OF EXISTENCE AND EXACT LOCATION OF ALL SERVICES MUST BE OBTAINED FROM THE INDIVIDUAL UTILITIES BEFORE PROCEEDING WITH CONSTRUCTION.

B.M.	37-003	Bolt in 7.3m Conc. pile, 0.3m N. of N.L.
ELEV.	233.449	
NO.	REVISIONS	DATE BY
1	ISSUED FOR ADDENDUM 1	13/08/28 GES
0	ISSUED FOR TENDER	13/08/22 GES

DESIGNED BY	GES	CHECKED BY	CR
DRAWN BY	GEL	APPROVED BY	RJH
HOR. SCALE:	1:250	RELEASED FOR CONSTRUCTION:	
VERTICAL:	1:50	DATE	13/08/20

ENGINEER'S SEAL  
M.C. ROWBOTHAM  
REGISTERED PROFESSIONAL ENGINEER  
August 27, 2013  
CONSULTANT DRAWING NO.  
13-0107-011\_C14

**THE CITY OF WINNIPEG**  
PUBLIC WORKS DEPARTMENT  
TRANSPORTATION ENGINEERING DIVISION

PROJECT TITLE  
**2013 ALLEY RENEWAL PROGRAM**  
CONTRACT 2  
ASHBURN ST/VALOUR RD  
STA 3+20 TO ELLICE AVE

14 OF 15  
COMPUTER FILE NAME  
13-0107-011\_CALL  
CITY DRAWING NUMBER  
0014

P:\Projects\2013\13-0107-011\DocControl\ToBeSigned\DWG\13-0107-011\_C14-Rev 1.dwg - Tab: 14 Plotted By: Gloewen 06/27/2013 [Tue 2:06pm] PLOT 1:1 A=1