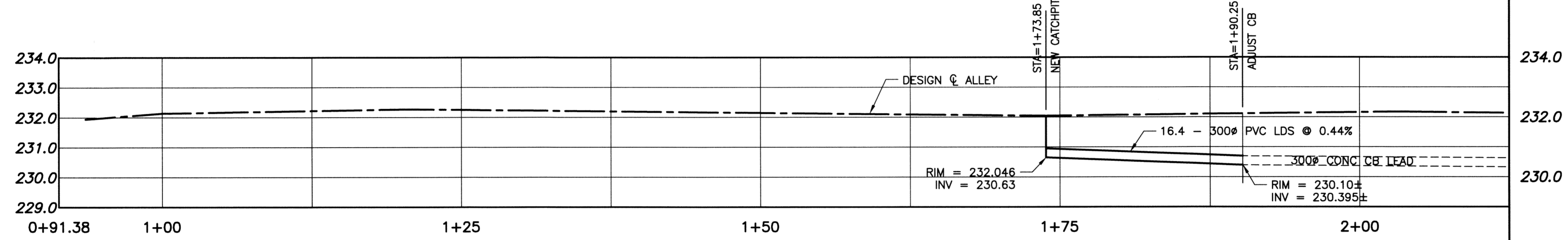


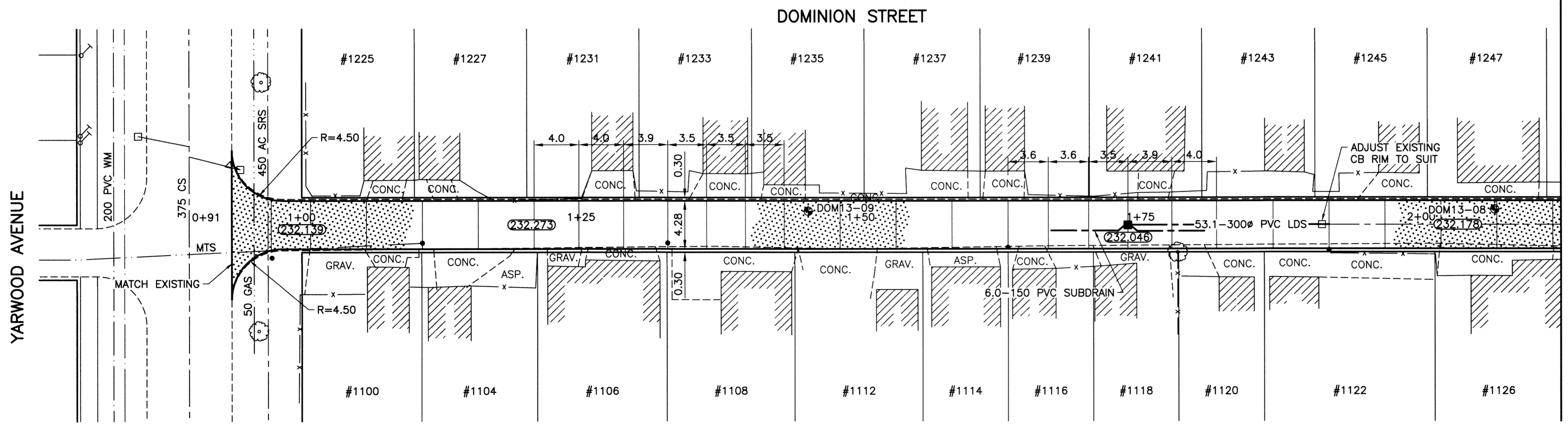
ALLEY PAVEMENT PROFILE

SCALE: 1:250 HOR
1:10 VER



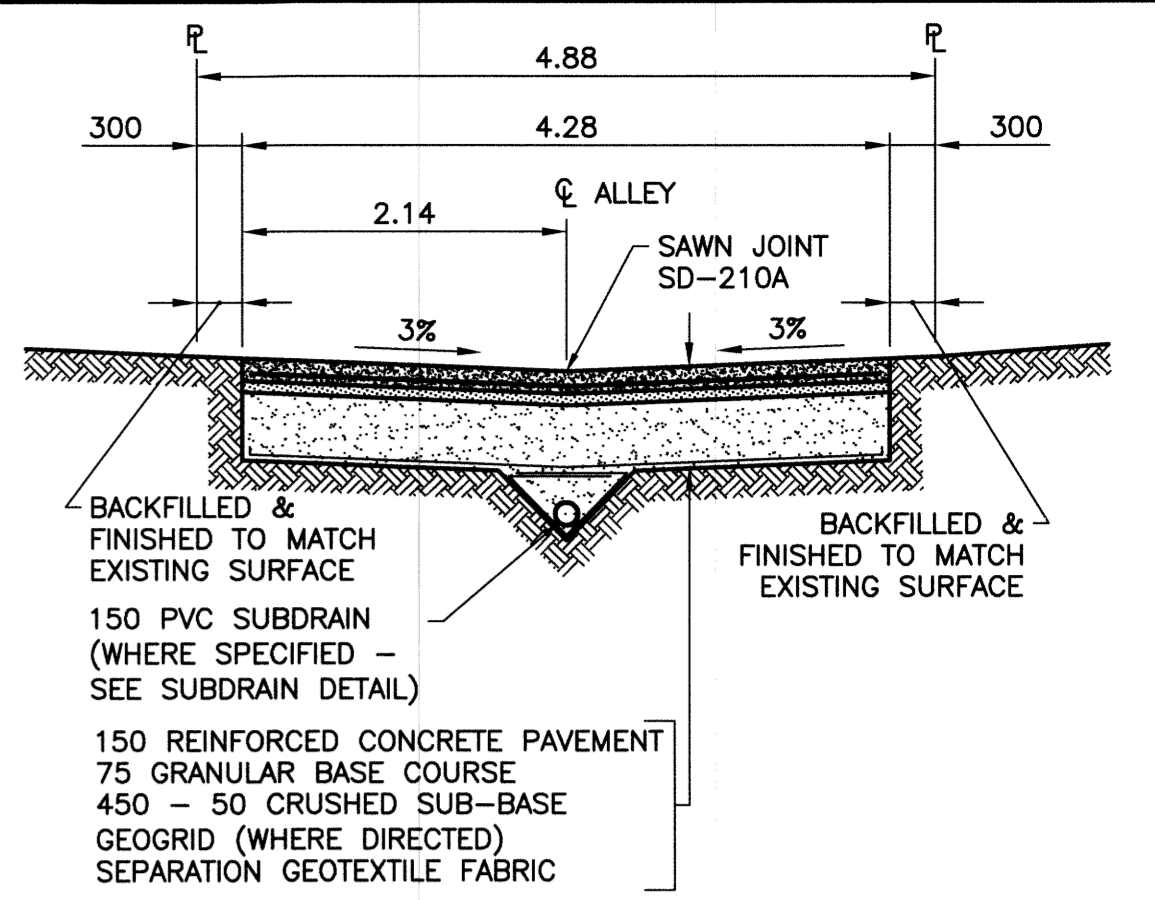
ALLEY UNDERGROUND PROFILE

SCALE: 1:250 HOR
1:100 VER



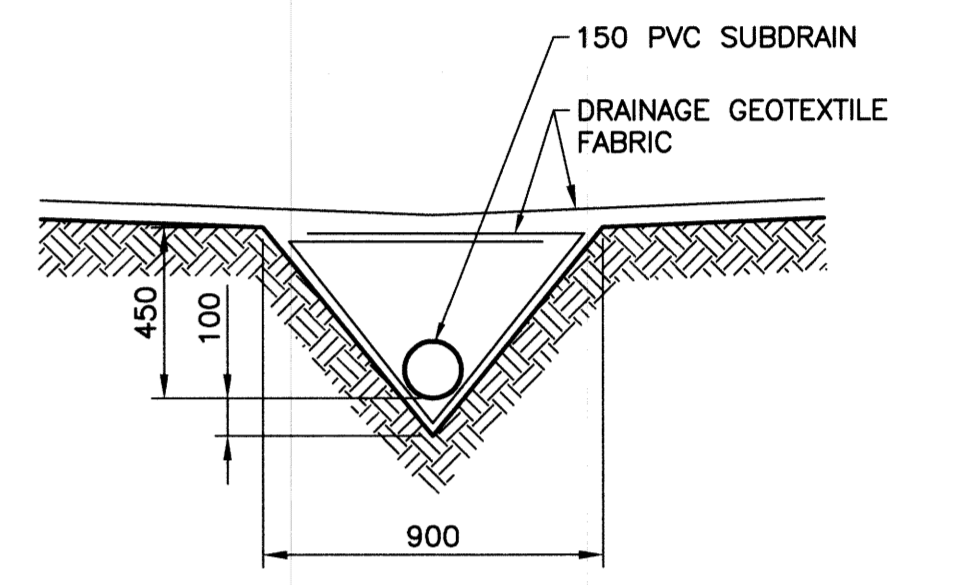
GARFIELD STREET ALLEY PAVEMENT PLAN

SCALE: 1:250 HOR



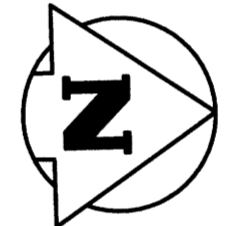
TYPICAL CROSS SECTION

SCALE: 1:50



SUBDRAIN DETAIL

SCALE: 1:20



NOTES:

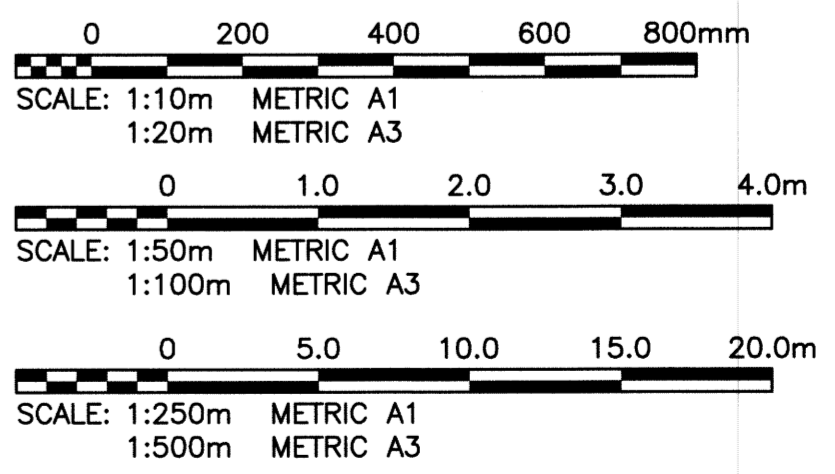
1. STATION CHAINAGE IS BASED ON CENTERLINE OF ALLEY RIGHT OF WAY.
2. ADJUST MH AND CB RIMS TO NEW GRADES.
3. PLUG SUBDRAINS AT TERMINAL ENDS.
4. REGRADE EXISTING PRIVATE SIDEWALKS AS REQUIRED.
5. INSTALLATION OF LIP CURBS AND THEIR EXTENTS TO BE DETERMINED BY THE CONTRACT ADMINISTRATOR.
6. LIGHT STANDARDS, HYDRO POLES AND ANCHORS MAY REQUIRE TEMPORARY SUPPORT/REMOVAL OR REPLACEMENT AT THE CONTRACTOR'S EXPENSE.
7. ISOLATE ALL POLES, BASES AND PILES WITHIN ALLEY RIGHT OF WAY (SD-228C)
8. AVOID DAMAGE TO EXISTING TREES WITHIN THE LIMITS OF CONSTRUCTION.

WARNING

NOTIFY THE GAS COMPANY OF THE PROPOSED LOCATION OF EXCAVATION. TAKE PRECAUTION TO AVOID DAMAGE TO GAS COMPANY INSTALLATIONS. SEE PROVINCIAL REGULATION 210/72 FOR DETAILS.

METRIC

WHOLE NUMBERS INDICATE MILLIMETRES
DECIMALIZED NUMBERS INDICATE METRES



PROPERTY LIMITS DELINEATION

DELINEATION OF PROPERTY LIMITS AS SHOWN ON THIS DWG DOES NOT REPRESENT A "LEGAL SURVEY". KGS GROUP MAKES NO REPRESENTATION OR WARRANTY AS TO THE ACCURACY OF PROPERTY LIMITS DELINEATED ON THIS DWG, NOR ON THE DIMENSIONAL ACCURACY OF DWG FEATURES RELATIVE TO THOSE PROPERTY LIMITS.

P:\Projects\2013\13-0107-011\Doc\Control\ToBeIssued\DWG\13-0107-011_C04-Rev 0.dwg - Tab: 04_Plotting By: Gloewen 08/22/2013 [Thu 3:25pm] PLOT: 1:1 A-1

300 LDS	LAND DRAINAGE SEWER	300 LDS		TEST HOLE	
250 WWS	WASTE WATER SEWER	250 WWS		GUY WIRE	
	GAS			LIGHT STANDARD	
	HYDRO			BACK OF CURB	
	M.T.S.			CONCRETE	
150 WM	WATERMAIN	150 WM		ASPHALT	
	HYDRANT			SIDEWALK	
	VALVE			PROPERTY LINE	
	MANHOLE			SURVEY BAR	
	CATCH BASIN			GEODETIC BENCHMARK	
	CURB INLET			ELEVATION	
	POLES				
EXISTING	LEGEND-PLAN	PROPOSED	EXISTING	LEGEND-PLAN	PROPOSED

LOCATION APPROVED UNDERGROUND STRUCTURES

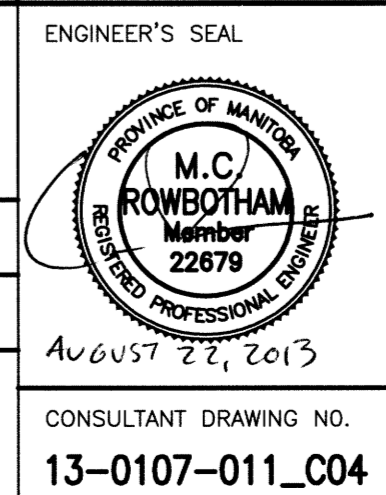
SUPV. U/G STRUCTURES COMMITTEE DATE

NOTE: LOCATION OF UNDERGROUND STRUCTURES AS SHOWN ARE BASED ON THE BEST INFORMATION AVAILABLE BUT NO GUARANTEE IS GIVEN THAT ALL EXISTING UTILITIES ARE SHOWN OR THAT THE GIVEN LOCATIONS ARE EXACT. CONFIRMATION OF EXISTENCE AND EXACT LOCATION OF ALL SERVICES MUST BE OBTAINED FROM THE INDIVIDUAL UTILITIES BEFORE PROCEEDING WITH CONSTRUCTION.

B.M. 36-048	S. side Notre Dame Ave., @W. Downing St. & Dominion St.
ELEV. 232.513	(Tab. in N. conc. foundation No. 1134 Notre Dame Ave. (Clifton Apts.), 1m W. & 0.7m below stucco of N.E. Cor of Bldg.)
DESIGNED BY	GES
CHECKED BY	CR
DRAWN BY	GEL
APPROVED BY	MT
HOR. SCALE:	1:250
VERTICAL:	1:50
ISSUED FOR TENDER	13/08/22
DATE	BY
NO.	REVISIONS



DESIGNED BY	GES	CHECKED BY	CR
DRAWN BY	GEL	APPROVED BY	MT
HOR. SCALE:	1:250	RELEASED FOR CONSTRUCTION:	
VERTICAL:	1:50	DATE	13/08/20



THE CITY OF WINNIPEG
PUBLIC WORKS DEPARTMENT
TRANSPORTATION ENGINEERING DIVISION

PROJECT TITLE: **2013 ALLEY RENEWAL PROGRAM CONTRACT 2**
DOMINION ST/GARFIELD ST
YARWOOD AVE TO NOTRE DAME AVE
YARWOOD AVE TO STA 2+12.5

ENGINEER'S SEAL: **04** OF **15**
COMPUTER FILE NAME: **13-0107-011_CALL**
CITY DRAWING NUMBER: **0004**