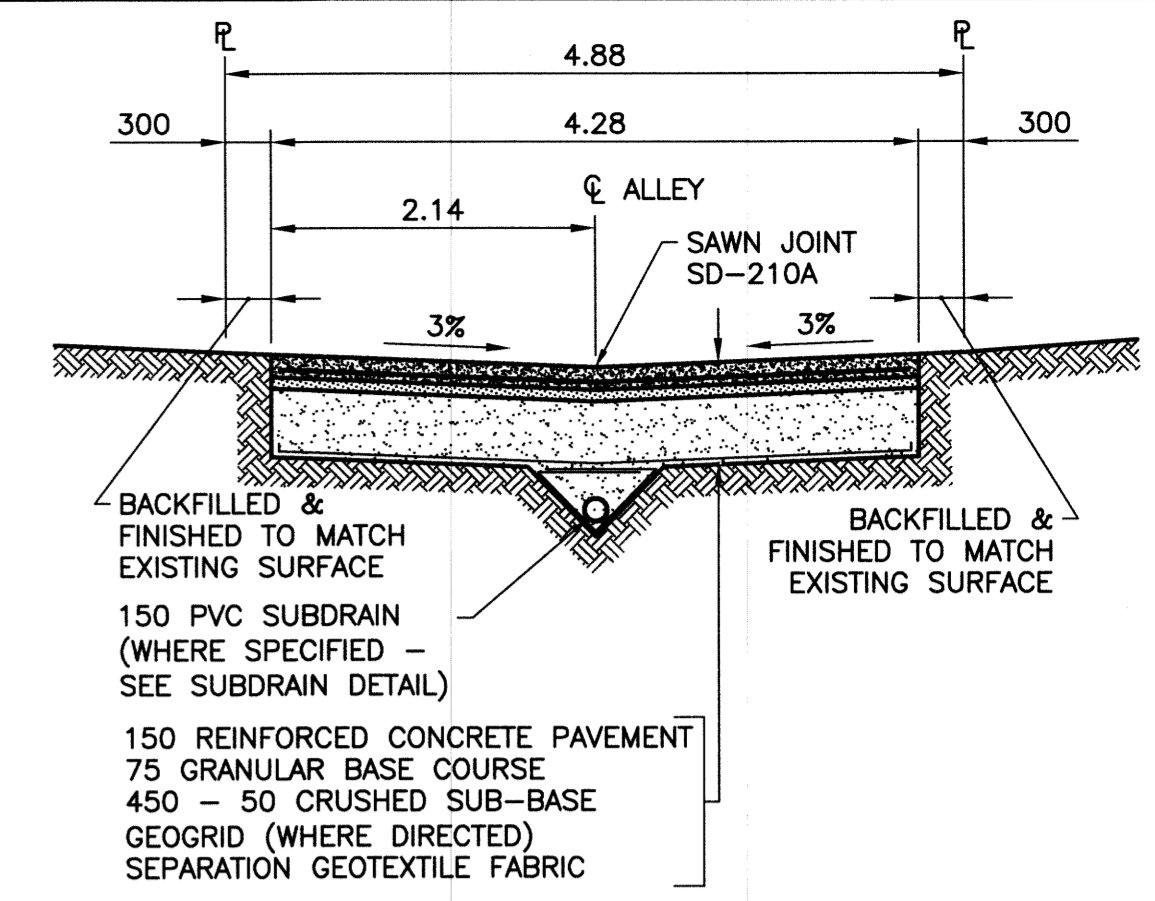
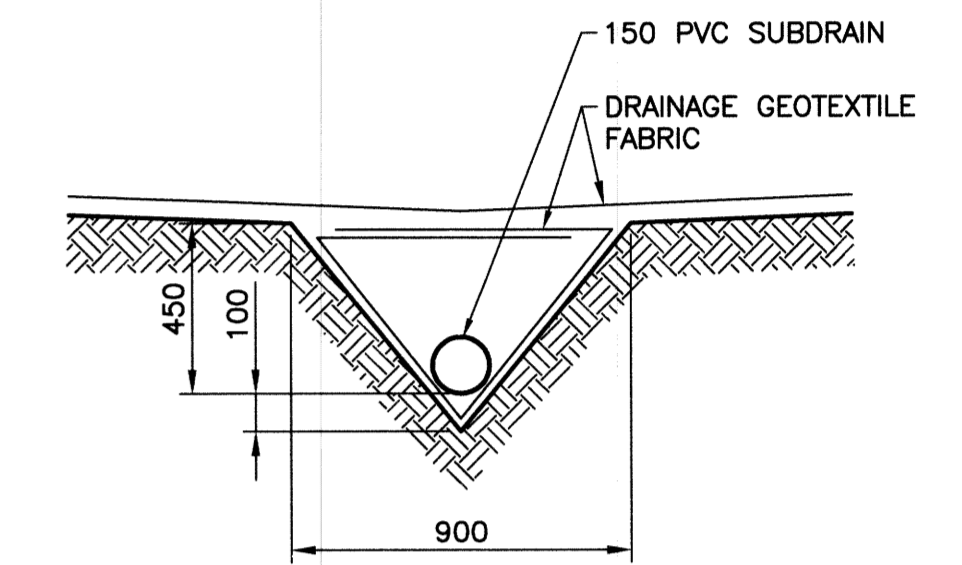


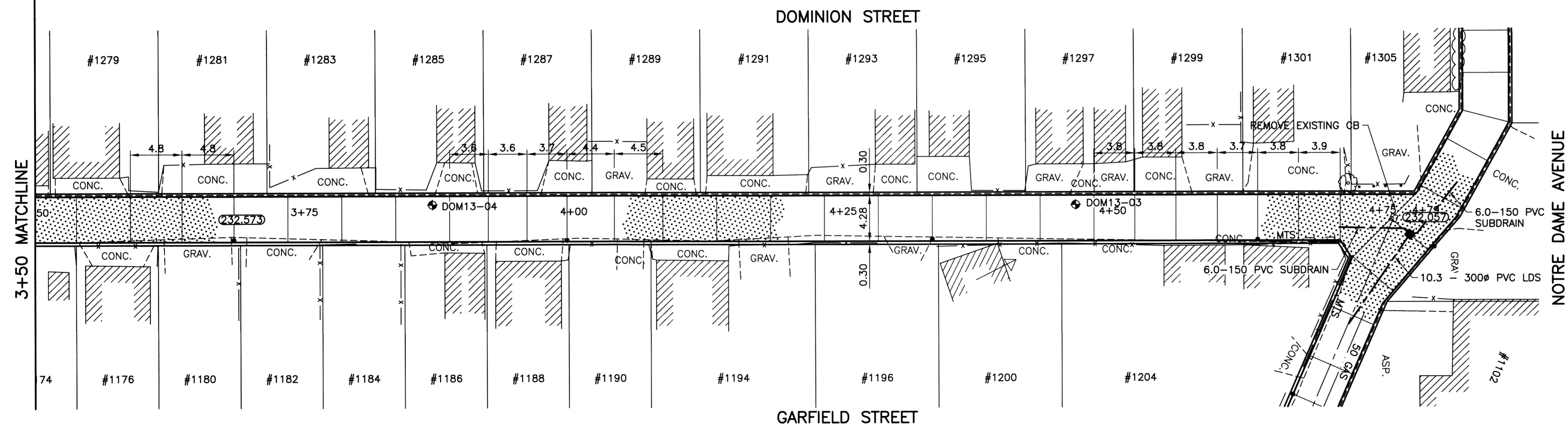
ALLEY PAVEMENT PROFILE
SCALE: 1:250 HOR
1:10 VER



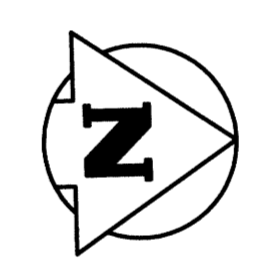
TYPICAL CROSS SECTION
SCALE: 1:50



SUBDRAIN DETAIL
SCALE: 1:20



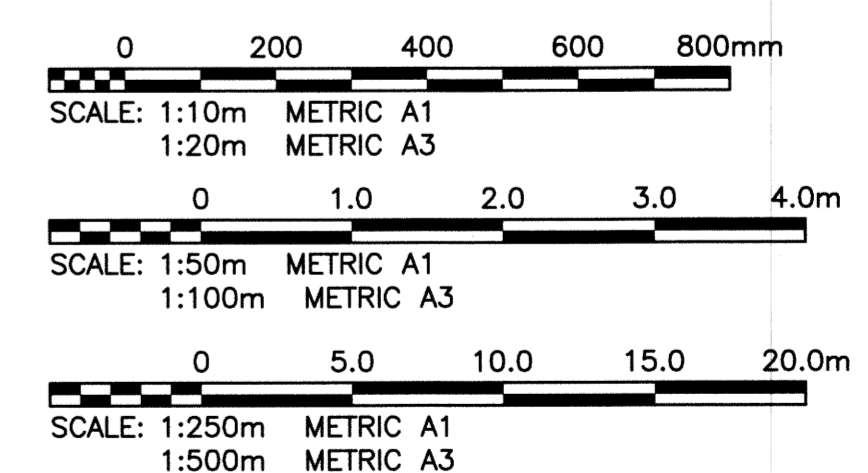
ALLEY PAVEMENT PLAN
SCALE: 1:250 HOR



- NOTES:**
1. STATION CHAINAGE IS BASED ON CENTERLINE OF ALLEY RIGHT OF WAY.
 2. ADJUST MH AND CB RIMS TO NEW GRADES.
 3. PLUG SUBDRAINS AT TERMINAL ENDS.
 4. REGRADE EXISTING PRIVATE SIDEWALKS AS REQUIRED.
 5. INSTALLATION OF LIP CURBS AND THEIR EXTENTS TO BE DETERMINED BY THE CONTRACT ADMINISTRATOR.
 6. LIGHT STANDARDS, HYDRO POLES AND ANCHORS MAY REQUIRE TEMPORARY SUPPORT/REMOVAL OR REPLACEMENT AT THE CONTRACTOR'S EXPENSE.
 7. ISOLATE ALL POLES, BASES AND PILES WITHIN ALLEY RIGHT OF WAY (SD-228C)
 8. AVOID DAMAGE TO EXISTING TREES WITHIN THE LIMITS OF CONSTRUCTION.

WARNING
NOTIFY THE GAS COMPANY OF THE PROPOSED LOCATION OF EXCAVATION. TAKE PRECAUTION TO AVOID DAMAGE TO GAS COMPANY INSTALLATIONS. SEE PROVINCIAL REGULATION 210/72 FOR DETAILS.

METRIC
WHOLE NUMBERS INDICATE MILLIMETRES
DECIMALIZED NUMBERS INDICATE METRES



PROPERTY LIMITS DELINEATION
DELINEATION OF PROPERTY LIMITS AS SHOWN ON THIS DWG DOES NOT REPRESENT A "LEGAL SURVEY". KGS GROUP MAKES NO REPRESENTATION OR WARRANTY AS TO THE ACCURACY OF PROPERTY LIMITS DELINEATED ON THIS DWG, NOR ON THE DIMENSIONAL ACCURACY OF DWG FEATURES RELATIVE TO THOSE PROPERTY LIMITS.



P:\Projects\2013\13-0107-01\Doc\Control\Released\DWG\13-0107-011_C06-Rev 0.dwg - Tab: 06 Plotted By: G.ewen 08/22/2013 [Thu 3:28pm] PLOT 1:1 A-1

300 LBS	LAND DRAINAGE SEWER	300 LBS							
250 WWS	WASTE WATER SEWER	250 WWS	+	TEST HOLE					
	GAS		—	GUY WIRE					
	HYDRO		—	LIGHT STANDARD					
	M.T.S.		—	BACK OF CURB					
150 WM	WATERMAIN	150 WM	—	CONCRETE					
+	HYDRANT		—	ASPHALT					
+	VALVE		—	SIDEWALK					
○	MANHOLE		—	PROPERTY LINE					
□	CATCH BASIN		—	SURVEY BAR					
▽	CURB INLET		—	GEODETIC BENCHMARK					
•	POLES	M-TS H-HYDRO	231.334	ELEVATION	(32.231)	TTTTT	Q PROFILE		
EXISTING	LEGEND-PLAN	PROPOSED	EXISTING	LEGEND-PLAN	PROPOSED	EXISTING	LEGEND-PROFILE	PROPOSED	

LOCATION APPROVED UNDERGROUND STRUCTURES

SUPV. U/G STRUCTURES COMMITTEE DATE

NOTE:
LOCATION OF UNDERGROUND STRUCTURES AS SHOWN ARE BASED ON THE BEST INFORMATION AVAILABLE BUT NO GUARANTEE IS GIVEN THAT ALL EXISTING UTILITIES ARE SHOWN OR THAT THE GIVEN LOCATIONS ARE EXACT. CONFIRMATION OF EXISTENCE AND EXACT LOCATION OF ALL SERVICES MUST BE OBTAINED FROM THE INDIVIDUAL UTILITIES BEFORE PROCEEDING WITH CONSTRUCTION.

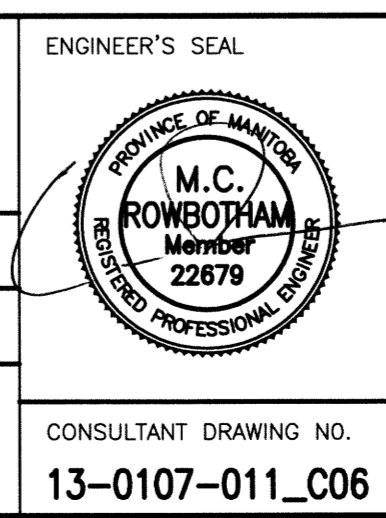
B.M. 36-048	S. side Notre Dame Ave., E/W. Downing St. & Dominion St.
ELEV. 232.513	Tot. in N. conc. foundation No. 1134 Notre Dame Ave. (Clifton Apts.), 1m W. & 0.7m below surface of N.E. Cor of Bldg.

KGS GROUP CONSULTING ENGINEERS

DESIGNED BY: GES
DRAWN BY: GEL
CHECKED BY: CR
APPROVED BY: PJP

HOR. SCALE: 1:250
VERTICAL: 1:50

ISSUED FOR TENDER: 13/08/22
DATE: 13/08/20



THE CITY OF WINNIPEG PUBLIC WORKS DEPARTMENT TRANSPORTATION ENGINEERING DIVISION

PROJECT TITLE: 2013 ALLEY RENEWAL PROGRAM CONTRACT 2
DOMINION ST/GARFIELD ST
YARWOOD AVE TO NOTRE DAME AVE
STA 3+50 TO NOTRE DAME AVE

CONSULTANT DRAWING NO. 13-0107-011_C06

SHEET OF 06 15
COMPUTER FILE NAME: 13-0107-011_CALL
CITY DRAWING NUMBER: 0006