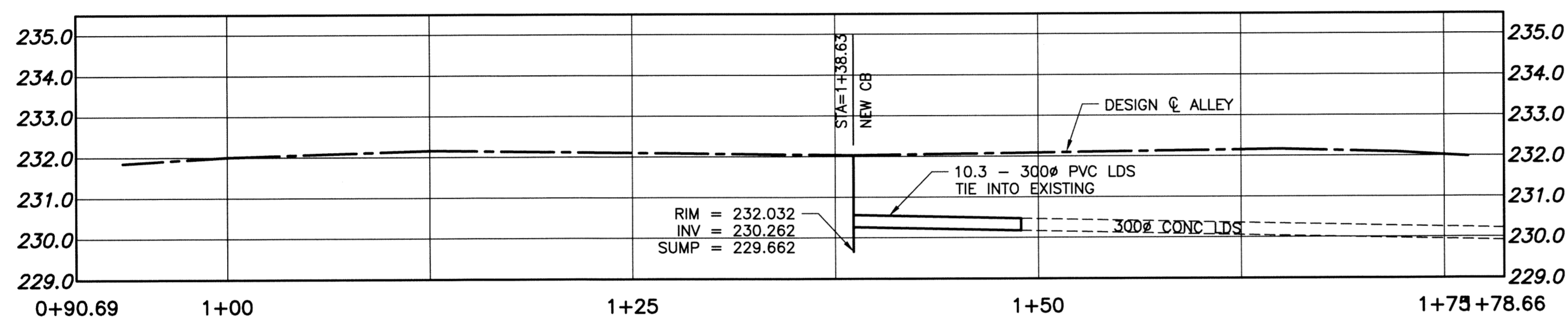


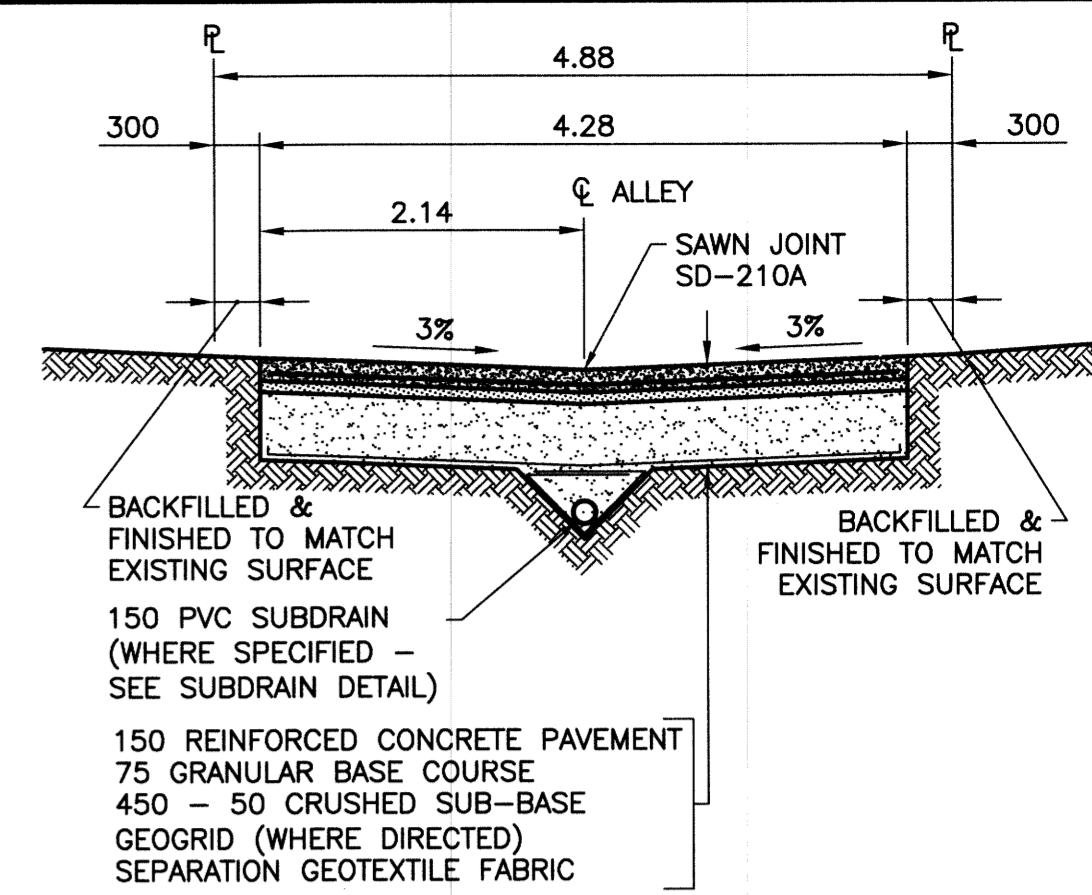
ALLEY PAVEMENT PROFILE

SCALE: 1:250 HOR
1:10 VER



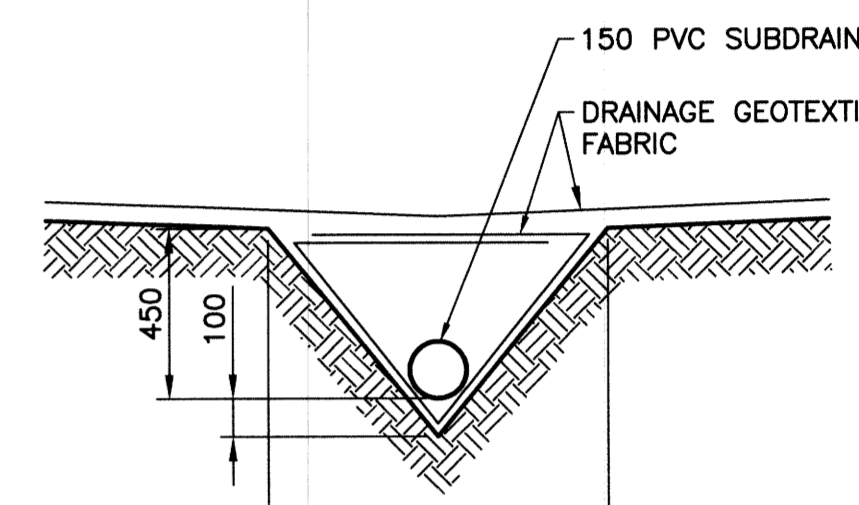
ALLEY UNDERGROUND PROFILE

SCALE: 1:250 HOR
1:100 VER



TYPICAL CROSS SECTION

SCALE: 1:50

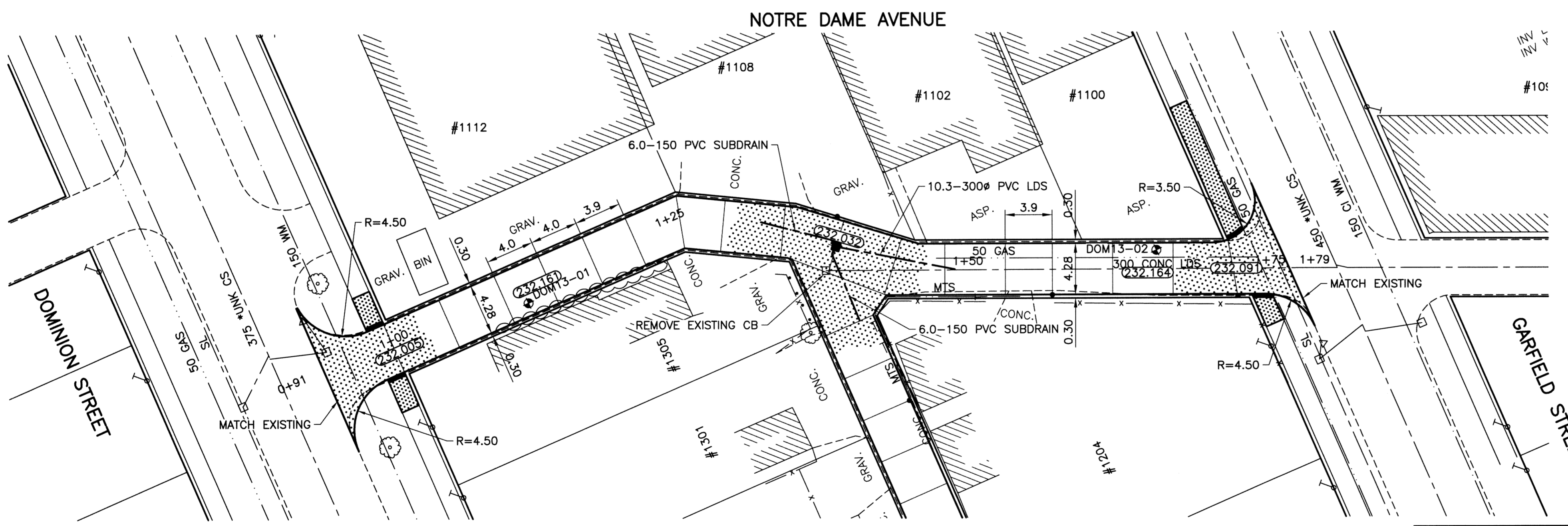


SUBDRAIN DETAIL

SCALE: 1:20

NOTES:

1. STATION CHAINAGE IS BASED ON CENTERLINE OF ALLEY RIGHT OF WAY.
2. ADJUST MH AND CB RIMS TO NEW GRADES.
3. PLUG SUBDRAINS AT TERMINAL ENDS.
4. REGRADE EXISTING PRIVATE SIDEWALKS AS REQUIRED.
5. INSTALLATION OF LIP CURBS AND THEIR EXTENTS TO BE DETERMINED BY THE CONTRACT ADMINISTRATOR.
6. LIGHT STANDARDS, HYDRO POLES AND ANCHORS MAY REQUIRE TEMPORARY SUPPORT/REMOVAL OR REPLACEMENT AT THE CONTRACTOR'S EXPENSE.
7. ISOLATE ALL POLES, BASES AND PILES WITHIN ALLEY RIGHT OF WAY (SD-228C)
8. AVOID DAMAGE TO EXISTING TREES WITHIN THE LIMITS OF CONSTRUCTION.

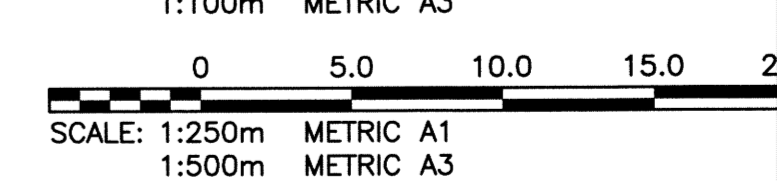
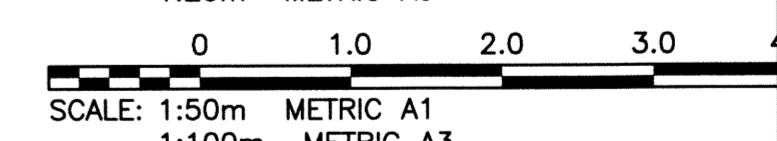
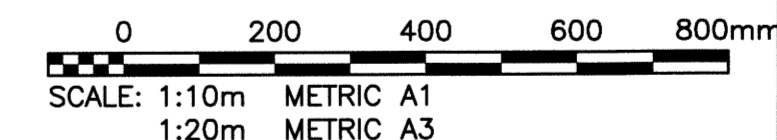


ALLEY PAVEMENT PLAN

SCALE: 1:250 HOR

WARNING
NOTIFY THE GAS COMPANY OF THE PROPOSED LOCATION OF EXCAVATION. TAKE PRECAUTION TO AVOID DAMAGE TO GAS COMPANY INSTALLATIONS. SEE PROVINCIAL REGULATION 210/72 FOR DETAILS.

METRIC
WHOLE NUMBERS INDICATE MILLIMETRES
DECIMALIZED NUMBERS INDICATE METRES



PROPERTY LIMITS DELINEATION

DELINEATION OF PROPERTY LIMITS AS SHOWN ON THIS DWG DOES NOT REPRESENT A "LEGAL SURVEY". KGS GROUP MAKES NO REPRESENTATION OR WARRANTY AS TO THE ACCURACY OF PROPERTY LIMITS DELINEATED ON THIS DWG, NOR ON THE DIMENSIONAL ACCURACY OF DWG FEATURES RELATIVE TO THOSE PROPERTY LIMITS.

APEGM
Certificate of Authorization
KGS Group
No. 245

300 LDS	LAND DRAINAGE SEWER	300 LDS	TEST HOLE			
250 WWS	WASTE WATER SEWER	250 WWS	GUY WIRE			
	GAS		LIGHT STANDARD			
	HYDRO		BACK OF CURB			
	M.T.S.		CONCRETE			
150 WM	WATERMAIN	150 WM	ASPHALT			
	HYDRANT		SIDEWALK			
	VALVE		PROPERTY LINE			
	MANHOLE		SURVEY BAR			
	CATCH BASIN		GEODETIC BENCHMARK			
	CURB INLET		ELEVATION			
	POLES					
EXISTING	LEGEND-PLAN	PROPOSED	EXISTING	LEGEND-PLAN	PROPOSED	EXISTING

LOCATION APPROVED UNDERGROUND STRUCTURES
SUPV. U/G STRUCTURES DATE COMMITTEE

B.M.	36-048	S. side Notre Dame Ave., S.W. corner Downing St. & Dominion St.
ELEV.	232.513	Tolt. in N. conc. foundation No. 1134 Notre Dame Ave., (Clifton Apts.), 1m W. & 0.7m below stucco of N.E. Cor of Bldg.
NO.	REVISIONS	DATE BY
0	ISSUED FOR TENDER	13/08/20 GJS

DESIGNED BY	GES	CHECKED BY	CR
DRAWN BY	GEL	APPROVED BY	PH
HOR. SCALE:	1:250	RELEASED FOR CONSTRUCTION:	
VERTICAL:	1:50	DATE	13/08/20

KGS GROUP CONSULTING ENGINEERS
ENGINEER'S SEAL
M.C. ROWBOTHAM
22679
August 22, 2013
CONSULTANT DRAWING NO. 13-0107-011_007

THE CITY OF WINNIPEG PUBLIC WORKS DEPARTMENT TRANSPORTATION ENGINEERING DIVISION

PROJECT TITLE: **2013 ALLEY RENEWAL PROGRAM CONTRACT 2**

NOTRE DAME AVENUE SOUTH DOMINION ST TO GARFIELD ST

SHEET OF 07 15
COMPUTER FILE NAME: 13-0107-011_CALL
CITY DRAWING NUMBER: 0007

P:\Projects\2013\13-0107-011\Doc\Control\ToBeIssued\DWG\13-0107-011_007-Rev 0.dwg - Tab: 07 Plotted By: GLoewen 08/22/2013 [Thu 3:29pm] PLOT 1:1 A-1