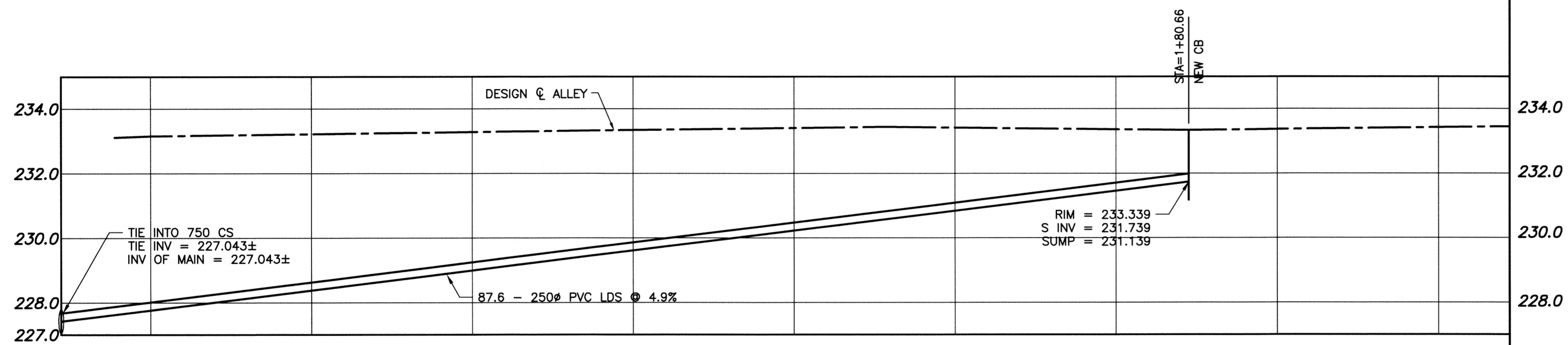


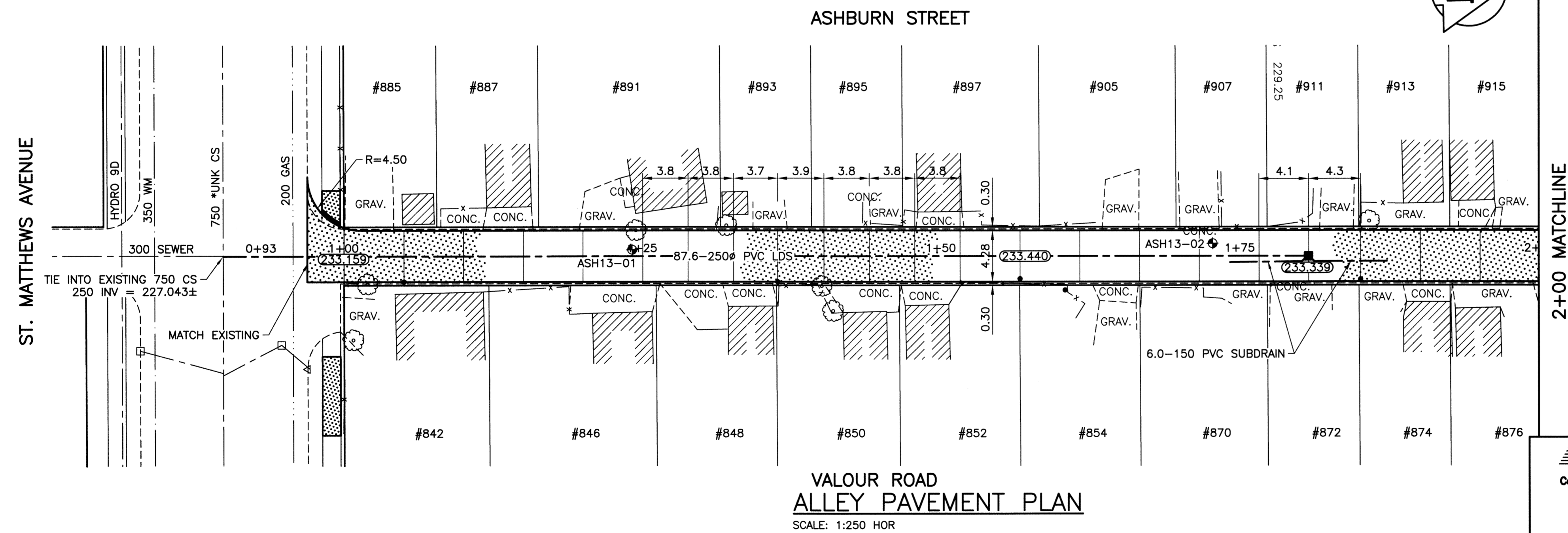
ALLEY PAVEMENT PROFILE

SCALE: 1:250 HOR
1:10 VER



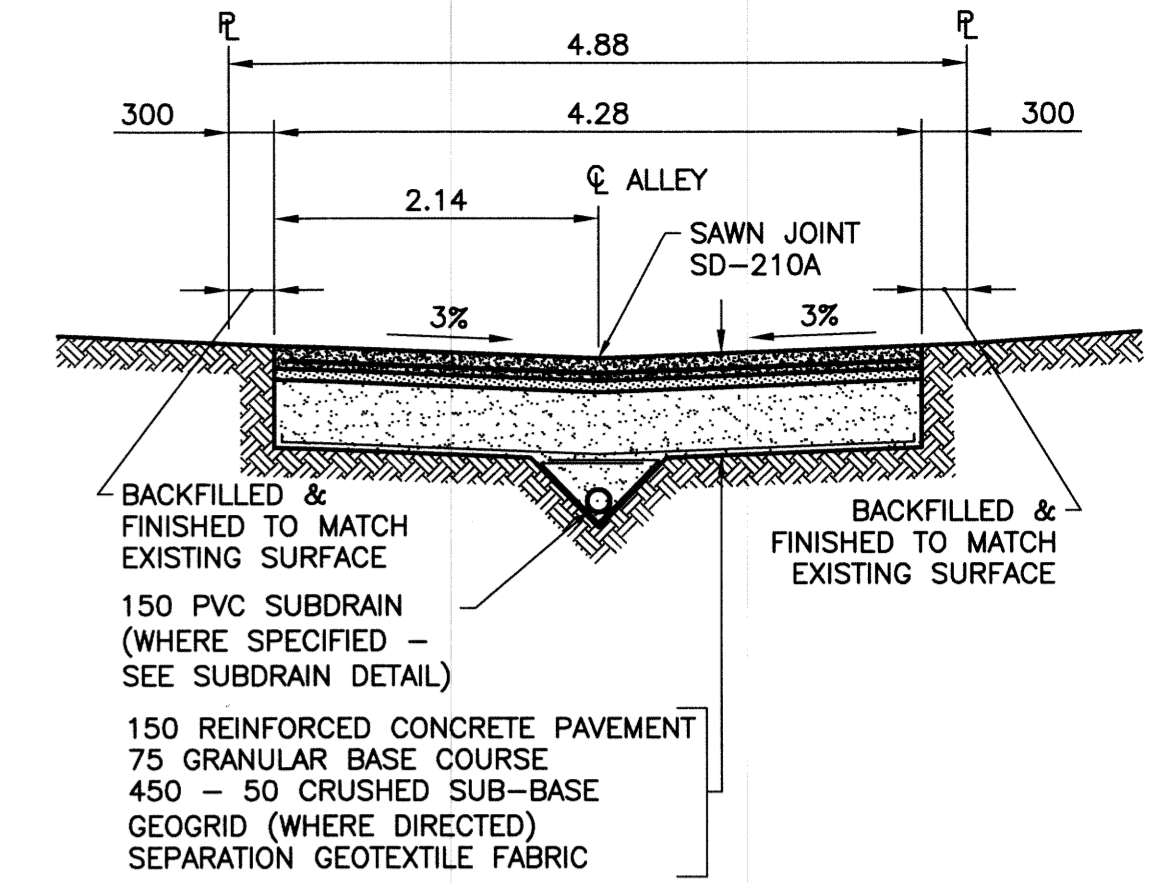
SEWER PROFILE

SCALE: 1:250 HOR
1:10 VER



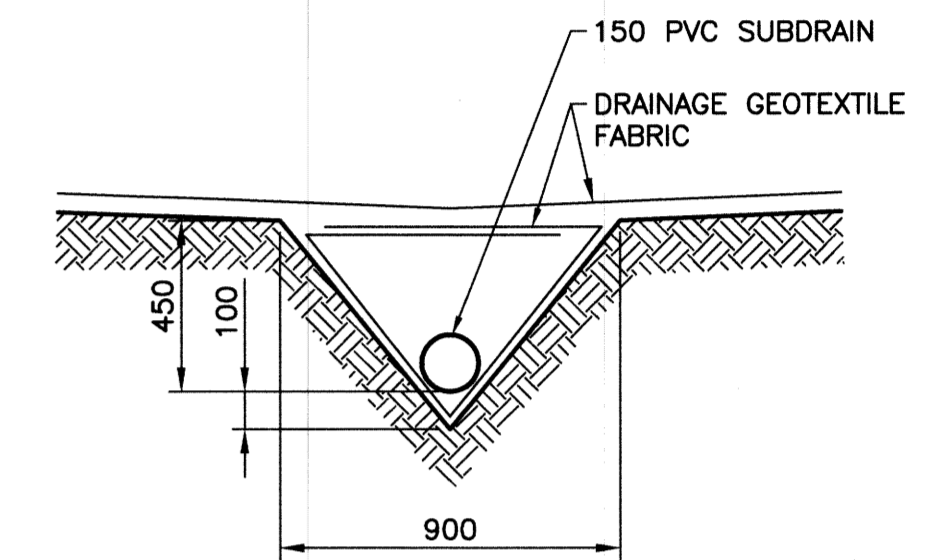
VALOUR ROAD ALLEY PAVEMENT PLAN

SCALE: 1:250 HOR



TYPICAL CROSS SECTION

SCALE: 1:50



SUBDRAIN DETAIL

SCALE: 1:20

NOTES:

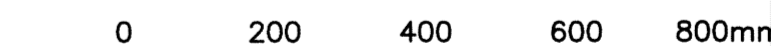
1. STATION CHAINAGE IS BASED ON CENTERLINE OF ALLEY RIGHT OF WAY.
2. ADJUST MH AND CB RIMS TO NEW GRADES.
3. PLUG SUBDRAINS AT TERMINAL ENDS.
4. REGRADE EXISTING PRIVATE SIDEWALKS AS REQUIRED.
5. INSTALLATION OF LIP CURBS AND THEIR EXTENTS TO BE DETERMINED BY THE CONTRACT ADMINISTRATOR.
6. LIGHT STANDARDS, HYDRO POLES AND ANCHORS MAY REQUIRE TEMPORARY SUPPORT/REMOVAL OR REPLACEMENT AT THE CONTRACTOR'S EXPENSE.
7. ISOLATE ALL POLES, BASES AND PILES WITHIN ALLEY RIGHT OF WAY (SD-228C)
8. AVOID DAMAGE TO EXISTING TREES WITHIN THE LIMITS OF CONSTRUCTION.

WARNING

NOTIFY THE GAS COMPANY OF THE PROPOSED LOCATION OF EXCAVATION. TAKE PRECAUTION TO AVOID DAMAGE TO GAS COMPANY INSTALLATIONS. SEE PROVINCIAL REGULATION 210/72 FOR DETAILS.

METRIC

WHOLE NUMBERS INDICATE MILLIMETRES
DECIMALIZED NUMBERS INDICATE METRES



SCALE: 1:10m METRIC A1
1:20m METRIC A3



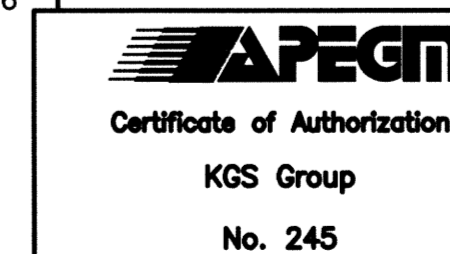
SCALE: 1:50m METRIC A1
1:100m METRIC A3



SCALE: 1:250m METRIC A1
1:500m METRIC A3

PROPERTY LIMITS DELINEATION

DELINEATION OF PROPERTY LIMITS AS SHOWN ON THIS DWG DOES NOT REPRESENT A "LEGAL SURVEY". KGS GROUP MAKES NO REPRESENTATION OR WARRANTY AS TO THE ACCURACY OF PROPERTY LIMITS DELINEATED ON THIS DWG, NOR ON THE DIMENSIONAL ACCURACY OF DWG FEATURES RELATIVE TO THOSE PROPERTY LIMITS.



300 LBS	LAND DRAINAGE SEWER	300 LBS	TEST HOLE				
250 WWS	WASTE WATER SEWER	250 WWS	GUY WIRE				
	GAS		LIGHT STANDARD				
	HYDRO		BACK OF CURB				
	M.T.S.		CONCRETE				
150 WM	WATERMAIN	150 WM	ASPHALT				
⊕	HYDRANT	⊕	SIDEWALK				
⊙	VALVE	⊙	PROPERTY LINE				
○	MANHOLE	○	SURVEY BAR				
□	CATCH BASIN	□	GEODETIC BENCHMARK				
▽	CURB INLET	▽	ELEVATION	231.334	32.231	TTTT	
•	POLES	•	LEGEND-PLAN	PROPOSED	EXISTING	LEGEND-PROFILE	PROPOSED
---	EXISTING	---	LEGEND-PLAN	PROPOSED	EXISTING	LEGEND-PROFILE	PROPOSED

LOCATION APPROVED UNDERGROUND STRUCTURES

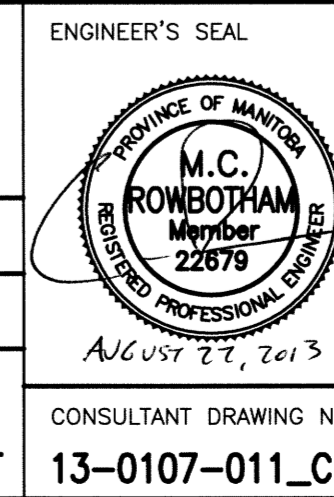
SUPV. U/G STRUCTURES COMMITTEE DATE

NOTE: LOCATION OF UNDERGROUND STRUCTURES AS SHOWN ARE BASED ON THE BEST INFORMATION AVAILABLE. BUT NO GUARANTEE IS GIVEN THAT ALL EXISTING UTILITIES ARE SHOWN OR THAT THE GIVEN LOCATIONS ARE EXACT. CONFIRMATION OF EXISTENCE AND EXACT LOCATION OF ALL SERVICES MUST BE OBTAINED FROM THE INDIVIDUAL UTILITIES BEFORE PROCEEDING WITH CONSTRUCTION.

B.M. 37-003	ELEV. 233.449	of St.	
ISSUED FOR TENDER	13/08/22	DATE	BY
NO. REVISIONS		DATE	BY



DESIGNED BY	GES	CHECKED BY	CR
DRAWN BY	GEL	APPROVED BY	MJ
HOR. SCALE:	1:250	RELEASED FOR CONSTRUCTION:	
VERTICAL:	1:50	DATE	13/08/20



THE CITY OF WINNIPEG
PUBLIC WORKS DEPARTMENT
TRANSPORTATION ENGINEERING DIVISION

PROJECT TITLE: **2013 ALLEY RENEWAL PROGRAM CONTRACT 2**
ASHBURN ST/VALOUR RD
ST MATTHEWS AVE TO ELLICE AVE
ST MATTHEWS AVE TO STA 2+00

ENGINEER'S SEAL: **12** OF **15**
COMPUTER FILE NAME: **13-0107-011_CALL**
CITY DRAWING NUMBER: **0012**