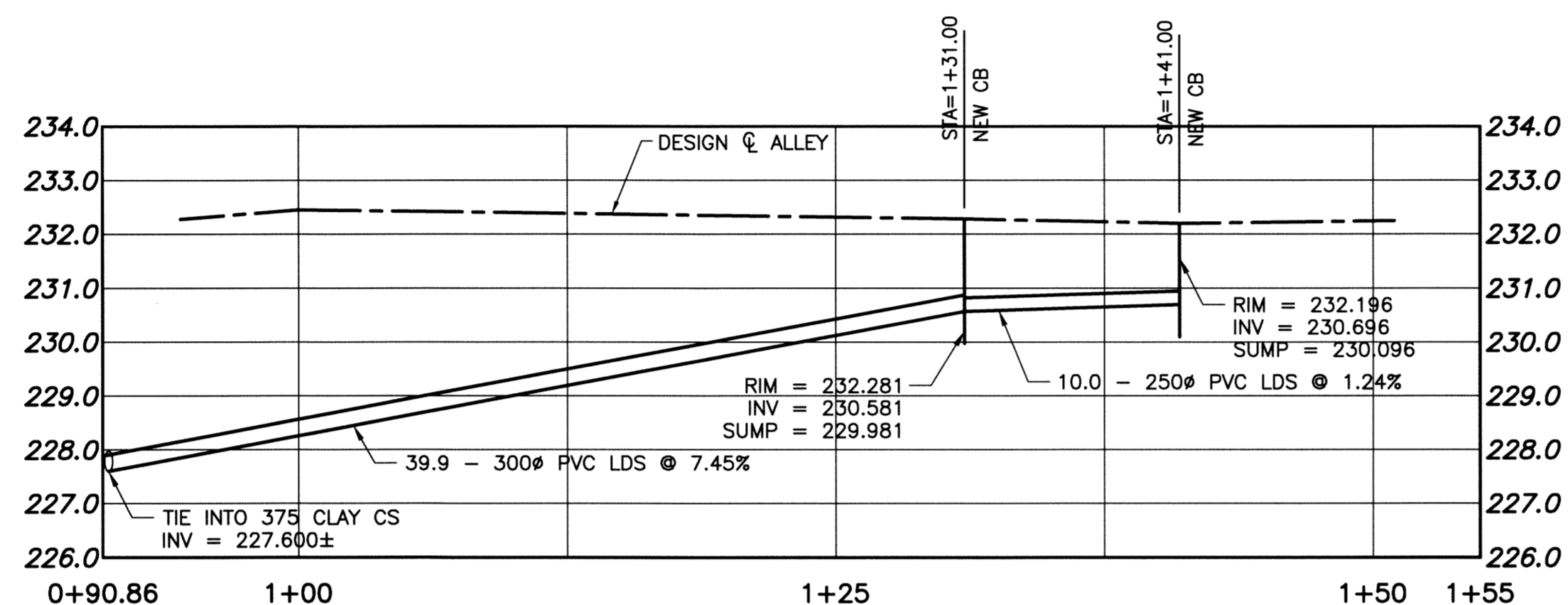


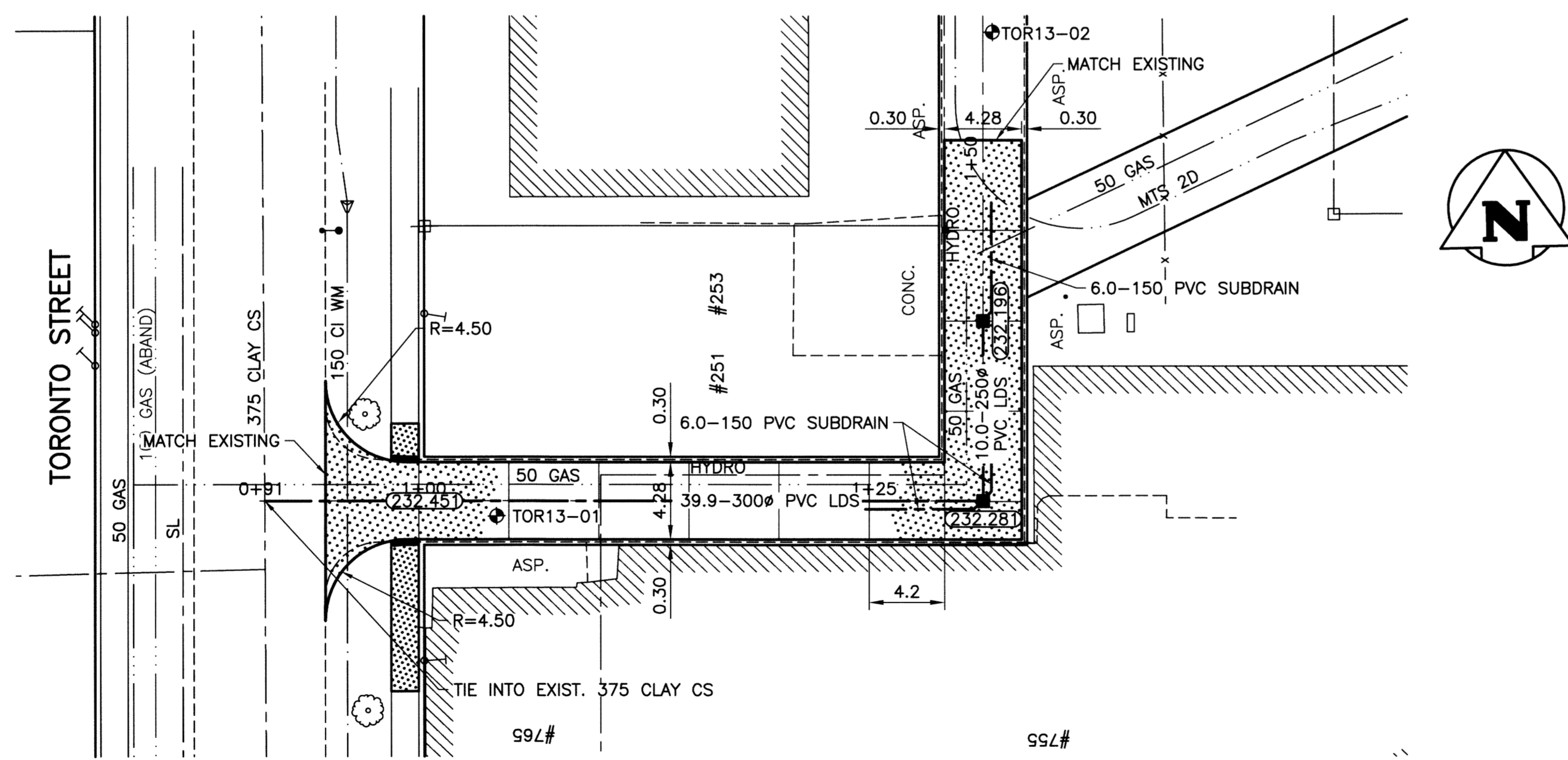
**ALLEY PAVEMENT PROFILE**

SCALE: 1:250 HOR  
1:10 VER



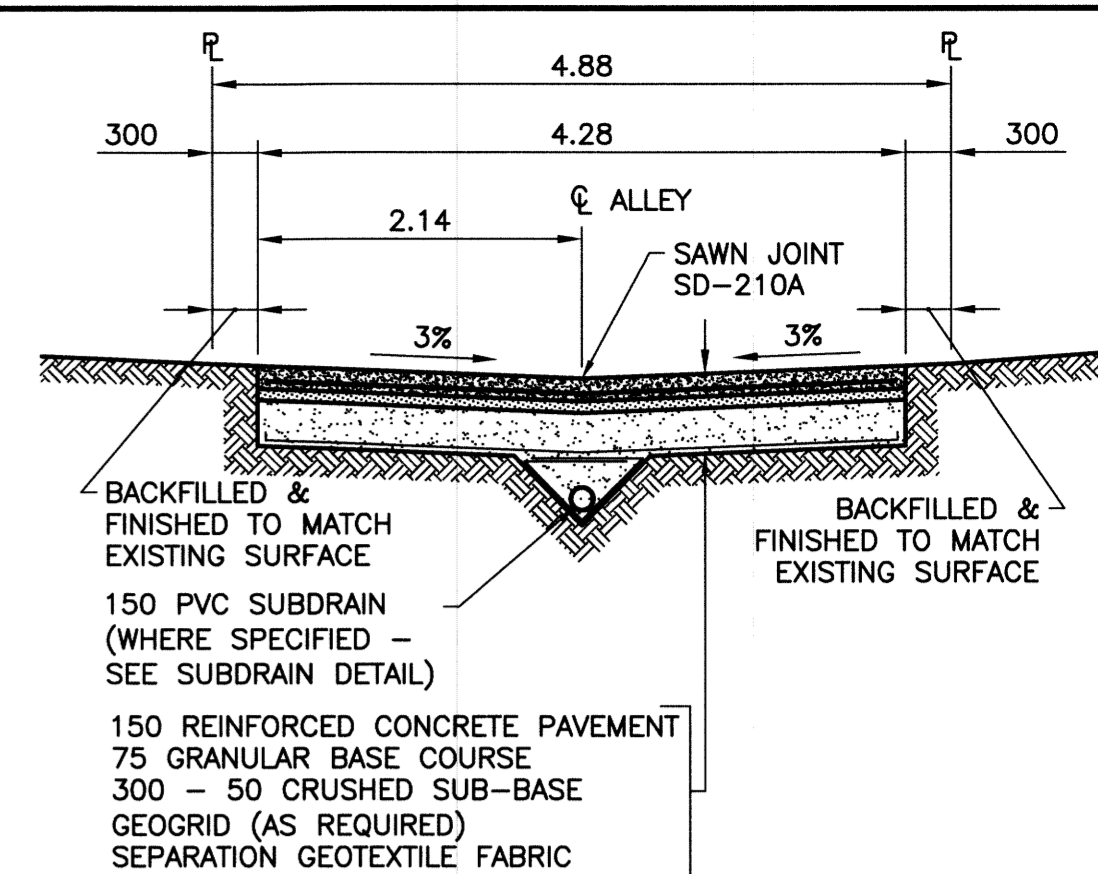
**ALLEY CB LEAD PROFILE**

SCALE: 1:250 HOR  
1:50 VER



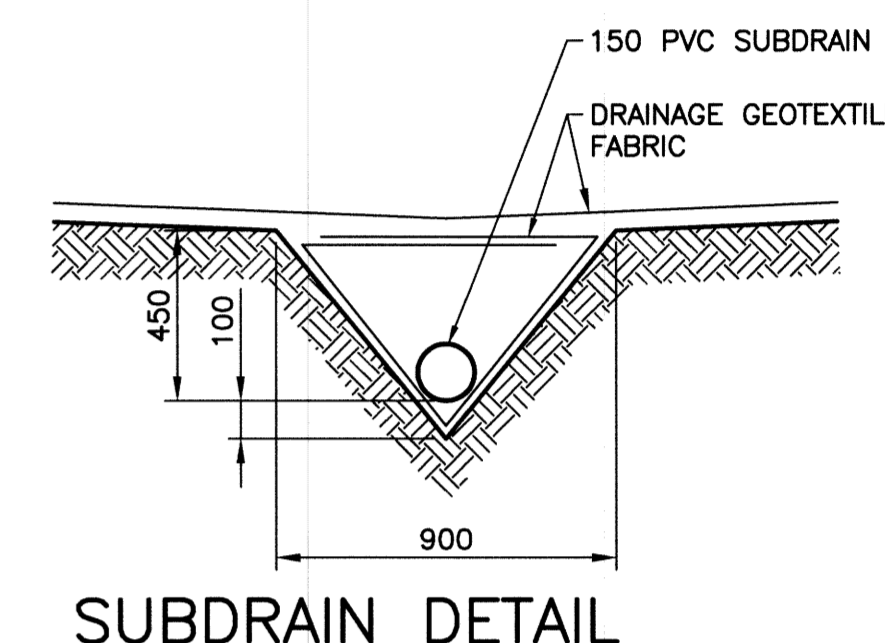
**PORTAGE AVENUE  
ALLEY PAVEMENT PLAN**

SCALE: 1:250 HOR



**TYPICAL CROSS SECTION**

SCALE: 1:50



**SUBDRAIN DETAIL**

SCALE: 1:20

**NOTES:**

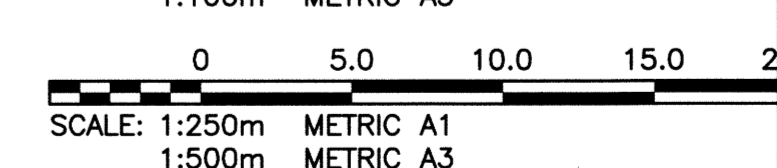
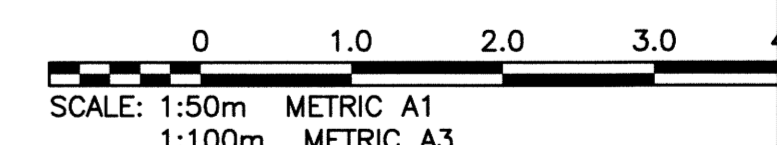
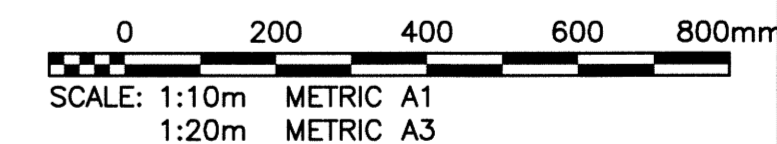
1. STATION CHAINAGE IS BASED ON CENTERLINE OF ALLEY RIGHT OF WAY.
2. ADJUST MH AND CB RIMS TO NEW GRADES.
3. PLUG SUBDRAINS AT TERMINAL ENDS.
4. REGRADE EXISTING PRIVATE SIDEWALKS AS REQUIRED.
5. INSTALLATION OF LIP CURBS AND THEIR EXTENTS TO BE DETERMINED BY THE CONTRACT ADMINISTRATOR.
6. LIGHT STANDARDS, HYDRO POLES AND ANCHORS MAY REQUIRE TEMPORARY SUPPORT/REMOVAL OR REPLACEMENT AT THE CONTRACTOR'S EXPENSE.
7. ISOLATE ALL POLES, BASES AND PILES WITHIN ALLEY RIGHT OF WAY (SD-228C)
8. AVOID DAMAGE TO EXISTING TREES WITHIN THE LIMITS OF CONSTRUCTION.

**WARNING**

NOTIFY THE GAS COMPANY OF THE PROPOSED LOCATION OF EXCAVATION. TAKE PRECAUTION TO AVOID DAMAGE TO GAS COMPANY INSTALLATIONS. SEE PROVINCIAL REGULATION 210/72 FOR DETAILS.

**METRIC**

WHOLE NUMBERS INDICATE MILLIMETRES  
DECIMALIZED NUMBERS INDICATE METRES



**PROPERTY LIMITS DELINEATION**

DELINEATION OF PROPERTY LIMITS AS SHOWN ON THIS DWG DOES NOT REPRESENT A "LEGAL SURVEY". KGS GROUP MAKES NO REPRESENTATION OR WARRANTY AS TO THE ACCURACY OF PROPERTY LIMITS DELINEATED ON THIS DWG, NOR ON THE DIMENSIONAL ACCURACY OF DWG FEATURES RELATIVE TO THOSE PROPERTY LIMITS.



300 LDS	LAND DRAINAGE SEWER	300 LDS							
250 WWS	WASTE WATER SEWER	250 WWS	+	TEST HOLE					
	GAS		-	GUY WIRE					
	HYDRO		••	LIGHT STANDARD					
	M.T.S.			BACK OF CURB					
150 WM	WATERMAIN	150 WM		CONCRETE					
	HYDRANT		+	ASPHALT					
	VALVE		⊗	SIDEWALK					
	MANHOLE		⊙	PROPERTY LINE					
	CATCH BASIN		⊕	SURVEY BAR					
	CURB INLET		⬇	GEODETIC BENCHMARK					
	POLES		•	ELEVATION					
EXISTING	LEGEND-PLAN	PROPOSED	EXISTING	LEGEND-PLAN	PROPOSED	EXISTING	LEGEND-PROFILE	PROPOSED	

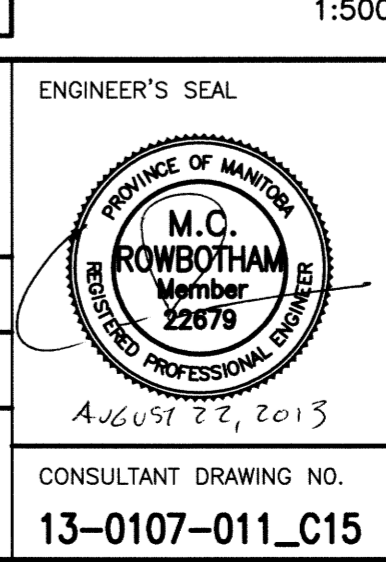
**LOCATION APPROVED UNDERGROUND STRUCTURES**

SUPV. U/G STRUCTURES COMMITTEE DATE

NOTE:  
LOCATION OF UNDERGROUND STRUCTURES AS SHOWN ARE BASED ON THE BEST INFORMATION AVAILABLE BUT NO GUARANTEE IS GIVEN THAT ALL EXISTING UTILITIES ARE SHOWN OR THAT THE GIVEN LOCATIONS ARE EXACT. CONFIRMATION OF EXISTENCE AND EXACT LOCATION OF ALL SERVICES MUST BE OBTAINED FROM THE INDIVIDUAL UTILITIES BEFORE PROCEEDING WITH CONSTRUCTION.

B.M.	37-012	74M603 - Tbit. in S. wall of Lions Manor, Portage Ave. & Sherbrook St., 2.4m W. of S.E. Cor. of Bldg.
ELEV.	232.457	
NO.	REVISIONS	DATE BY
0	ISSUED FOR TENDER	13/08/22 GFS

DESIGNED BY	GES	CHECKED BY	CR
DRAWN BY	GEL	APPROVED BY	MJK
HOR. SCALE:	1:250	RELEASED FOR CONSTRUCTION:	
VERTICAL:	1:50	DATE	13/08/20



**THE CITY OF WINNIPEG**  
PUBLIC WORKS DEPARTMENT  
TRANSPORTATION ENGINEERING DIVISION

PROJECT TITLE: **2013 ALLEY RENEWAL PROGRAM CONTRACT 2**

PORTAGE AVE NORTH  
TORONTO ST TO VICTOR ST WEST

SHEET OF: **15** OF **15**

COMPUTER FILE NAME: **13-0107-011\_CALL**

CITY DRAWING NUMBER: **0015**

CONSULTANT DRAWING NO.: **13-0107-011\_C15**

P:\Projects\2013\13-0107-011\DocControl\ToBeIssued\DWG\13-0107-011\_C15-Rev 0.dwg - Tab: 15 Plotted By: Gloewen 08/22/2013 [Thu 3:39pm] PLOT 1:1 A-1