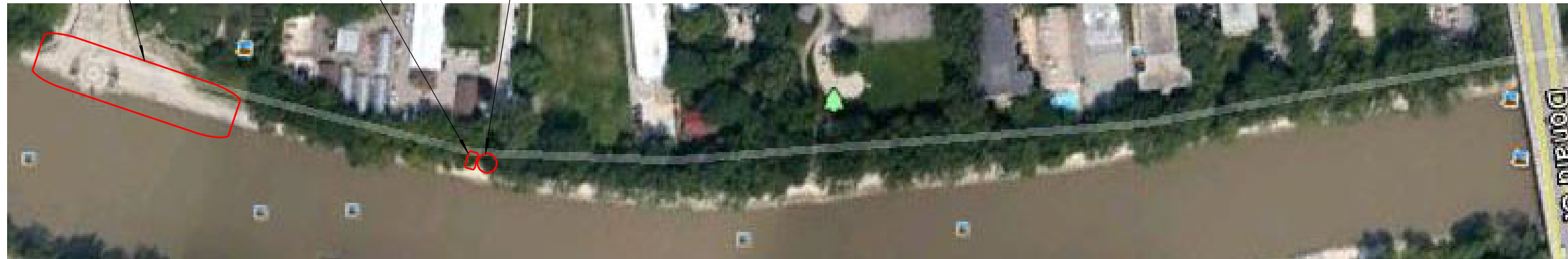


FOR RESTORATION WORK IN LEGISLATIVE DOCK SEE DRAWING L4, L5, AND L6

EXISTING EXPOSED CABLES TO BE BURIED - SEE DETAIL 3, 4, 5 - L3

FOR MODIFICATIONS TO EXISTING LIMESTONE FOUNTAIN WALL - SEE DETAIL 1, 2, 3 L3



A

CONNECT TO DRAWING 2-L1

1 WALKWAY RESTORATION PLAN WEST OF DONALD STREET BRIDGE
L1 Scale: 1:2000



A

CONNECT TO DRAWING 1-L1



FOR AMPHITHEATRE RECONSTRUCTION SEE DRAWINGS L7 - L9

REPLACE DAMAGE OVERHEAD STEEL CANOPY BEAM. SEE DETAILS 1, 2, AND 4 - L2

REPLACE WOOD RETAINING WALL. SEE DETAILS 1, 3, AND 5 - L2

2 WALKWAY RESTORATION PLAN EAST OF DONALD STREET BRIDGE
L1 Scale: 1:2000

PROJECT TITLE CITY OF WINNIPEG ASSINIBOINE RIVERWALK FLOOD REPAIRS RESTORATION 2012	DRAWING TITLE AERIAL PLANS KEN RECH LANDSCAPE ARCHITECTS INC. 1480 Wellington Crescent Winnipeg Manitoba Email kenrech@mymts.net R3N 0B3 Tel(204) 489-6616	NO.	REVISIONS	BY	DATE
		DRAWN BY K. RECH		SCALE as noted	
		PRINT DATE		DATE Sept. 3, 2013	
		FILE NO. 12-23		REVISION 0	
				SHEET NO. L1	