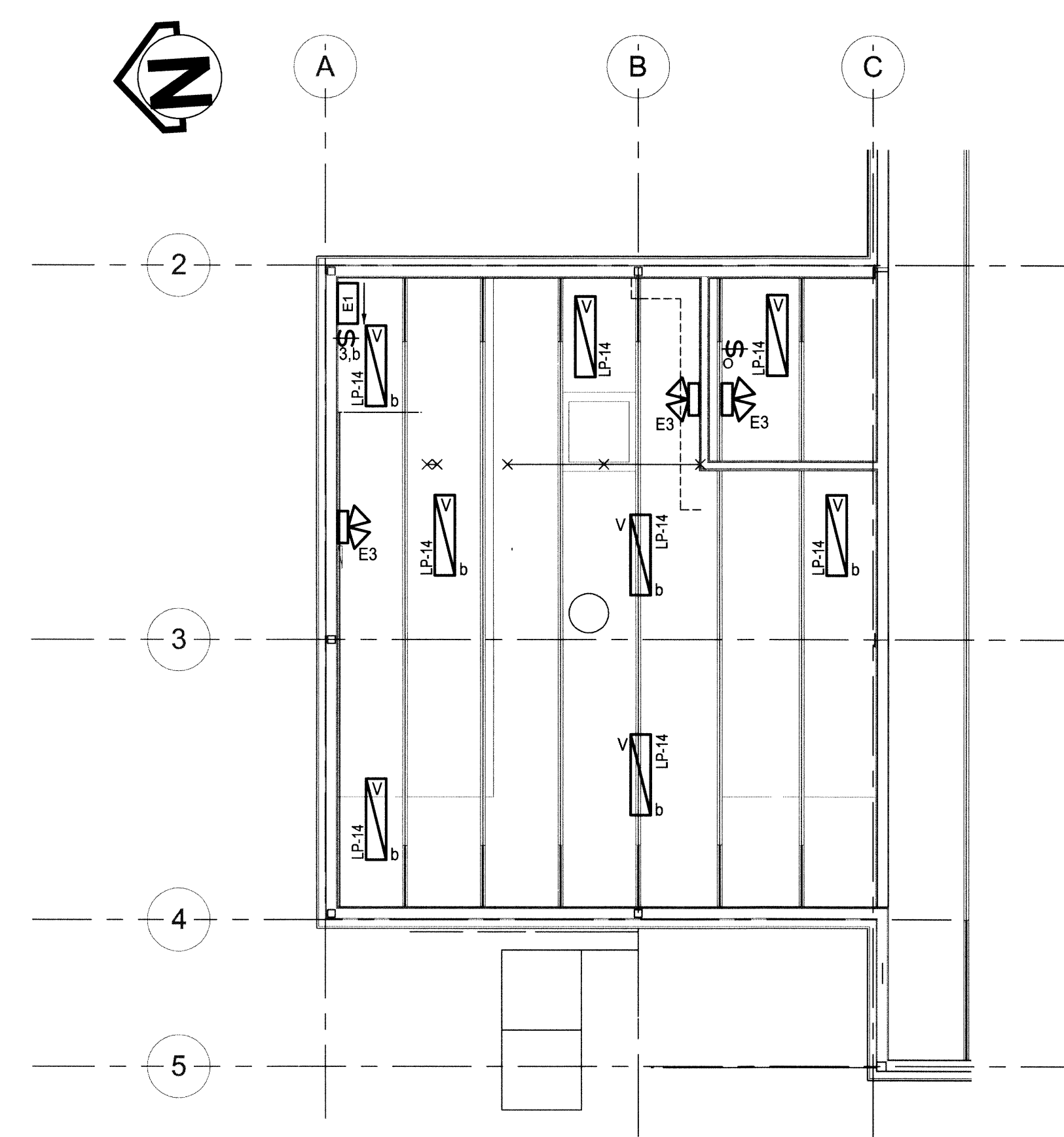
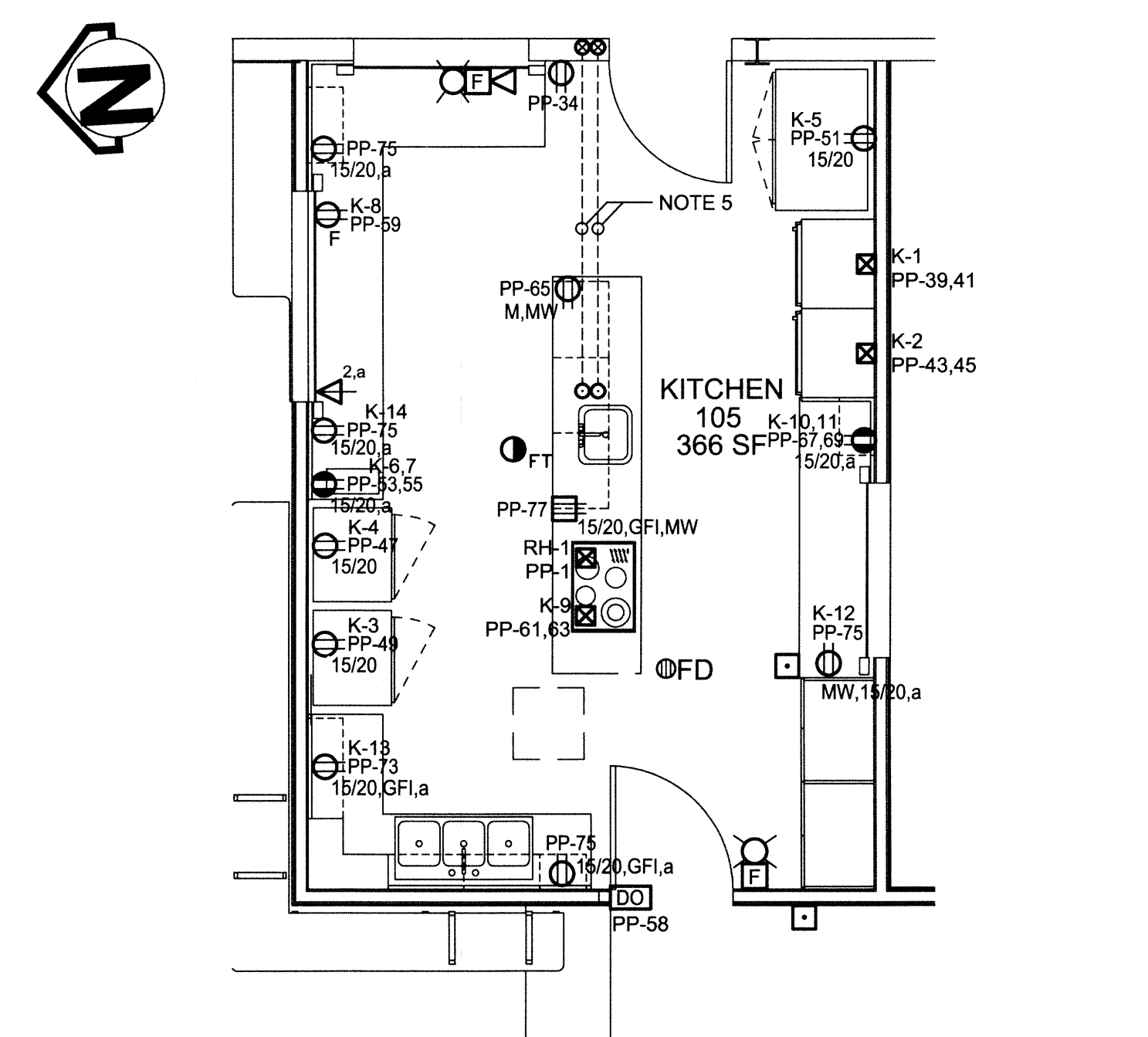


1 MEZZANINE PLAN - POWER & SYSTEMS  
 SCALE: 1:75mm (24"x36")  
 N.T.S. (11"x17")



2 MEZZANINE PLAN - LIGHTING  
 SCALE: 1:75mm (24"x36")  
 N.T.S. (11"x17")



3 KITCHEN PLAN DETAIL - POWER & SYSTEMS  
 SCALE: 1:50mm (24"x36")  
 1:100mm (11"x17")

DESIGN BASIS KITCHEN EQUIPMENT SCHEDULE (NOTES 7, 8)												
TAG	DESCRIPTION	VOLTS	PHASE	AMPS	KW	POLES	WIRES	WIRE SIZE	HARDWARE	MANUFACTURER CORD	RECEPTACLE PROVIDED	NOTES
K-1	WALL OVEN #1	208	1		3.5	2	2	#10	YES	NA		-
K-2	WALL OVEN #2	208	1		3.5	2	2	#10	YES	NA		-
K-3	FREEZER	120	1	5	0.55	1	2	#12	NO		5-20R	-
K-4	FRIDGE	120	1	5	0.58	1	2	#12	NO		5-20R	-
K-5	COOLER	120	1			1	2	#12	NO		5-20R	-
K-6	HOT CHOCOLATE MACHINE	120	1			1	2	#12	NO		5-20R	-
K-7	COFFEE BREWER	120	1			1	2	#12	NO		5-20R	-
K-8	MINI FRIDGE	120	1			1	2	#12	NO		5-15R	-
K-9	STOVETOP	208	1	35	7.3	2	2		YES	NA		-
K-10	NACHO WARMER	120	1		0.155	1	2	#12	NO	5-15P	5-20R	-
K-11	NACHO CHEESE	120	1		1.6	1	2	#12	NO	5-15P	5-20R	-
K-12	FROZEN BEVERAGES	120	1	12		1	2	#12	NO	5-15P	5-20R	-
K-13	HOTDOG WARMER	120	1	14.1	1.7	1	2	#12	NO	5-20P	5-20R	-
K-14	CASH	120	1			1	2	#12	NO		5-20R	-

- NOTES:**
- GREY LINE WEIGHT DENOTES EXISTING OR BY OTHERS.
  - CONFIRM LOCATION OF MECHANICAL EQUIPMENT WITH MECHANICAL DRAWINGS.
  - REFER TO ARCHITECTURAL DRAWINGS FOR LOCATION OF ALL HANDICAP PUSHBUTTONS. REFER TO THE HANDICAP DOOR OPERATOR DETAIL FOR TYPICAL CONNECTION DETAILS. COORDINATE WITH SHOP DRAWINGS PRIOR TO INSTALLATION.
  - REFER TO ARCHITECTURAL DRAWINGS FOR EXACT MOUNTING LOCATIONS OF ALL KITCHEN EQUIPMENT.
  - COORDINATE WITH STRUCTURAL TRADE TO EMBED POWER CONDUITS WITHIN THE CONCRETE SLAB FLOOR FROM THE KITCHEN ISLAND TO A JUNCTION BOX WITHIN THE CEILING SPACE. SIZE THE POWER CONDUIT AS PER CODE AND PROVIDE A SPARE 1" POWER CONDUIT COMPLETE WITH PULLSTRING.
  - PROVIDE A UL LISTED CARBON MONOXIDE DETECTOR C/W POWER SUPPLY AND MONITORING FROM FIRE ALARM CONTROL PANEL. CARBON MONOXIDE DETECTOR TO HAVE LOCAL ALARM ONLY AND PROVIDE TROUBLE SIGNAL TO BUILDING MONITORING COMPANY VIA MAIN FACP. CARBON MONOXIDE DETECTOR TO BE INSTALLED IN CONFORMANCE WITH MANITOBA BUILDING CODE & NFPA 720.
  - CONTRACTOR SHALL COORDINATE ALL KITCHEN EQUIPMENT ELECTRICAL CONNECTIONS WITH SHOP DRAWINGS PRIOR TO INSTALLATION.
  - COORDINATE SUPPLIED KITCHEN EQUIPMENT BREAKER REQUIREMENTS AND WIRE SIZES WITH KITCHEN EQUIPMENT SUPPLIER PRIOR TO ORDERING AND INSTALLING ELECTRICAL EQUIPMENT.
  - ALL ELECTRICAL CONTROL DEVICES, FIRE ALARM PULLSTATIONS, DATA OUTLETS AND ELECTRICAL OUTLETS SHALL BE MOUNTED BETWEEN 400mm AND 1200mm ABOVE FINISHED FLOOR (AFF) AS PER CITY OF WINNIPEG BARRIER FREE REQUIREMENT, UNLESS OTHERWISE NOTED.

678 MAIN STREET WINNIPEG, MB R3B 1E4  
 204 488 3857 tel. 204 488 0216 fax.  
**bridemancollaborative**  
 ARCHITECTURAL

**KGS GROUP**  
 CONSULTING ENGINEERS

**Winnipeg**  
 THE CITY OF WINNIPEG PLANNING, PROPERTY AND DEVELOPMENT DEPARTMENT  
 MUNICIPAL ACCOMMODATIONS DIVISION  
 4TH FLOOR - 185 KING STREET  
 R3B 1J1

Project:  
**EAST ELMWOOD COMMUNITY CENTRE**  
 480 KEENEYSIDE, WINNIPEG, MB

Drawing Title:  
**POWER & SYSTEMS MEZZANINE**

# Issue/Revision Date  
 0 - ISSUED FOR TENDER 2013.12.05  
 1 - ISSUED FOR TENDER 2013.12.09

Design By: CLS  
 Date: 2013.08.21  
 Design Check: [Signature]  
 Date: 2013.09.05  
 Drawn By: GGN  
 Date: 2013.09.03  
 DWG Check: [Signature]  
 Date: 2013.09.03

**APEGM**  
 Certificate of Authorization  
 KGS Group  
 No. 245

PROVINCE OF MANITOBA  
**REGULATED PROFESSIONAL**  
 Member  
 32345

Sheet No: **E202**  
 This drawing is property of the Consultant and cannot be reproduced or used without the consent of the Consultant. The contractor is responsible for checking and verifying all levels and dimensions and shall report all discrepancies to the Consultant and obtain clarification prior to commencing work.