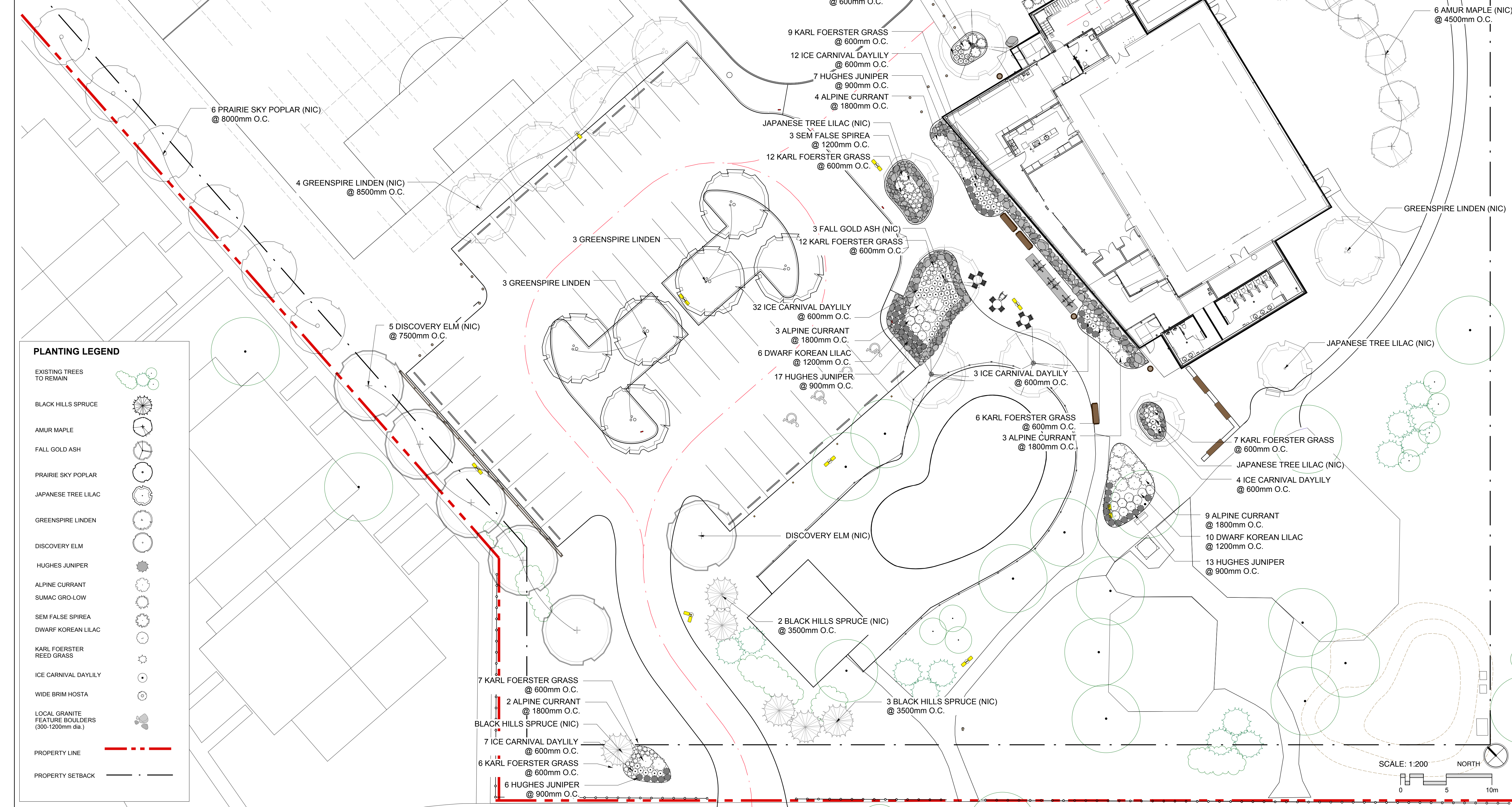


PLANT SPECIFICATION LIST		
QTY	BOTANICAL/ COMMON NAME	SIZE/REMARKS
Deciduous Trees		
6	<i>Tilia cordata</i> 'Greenspire' / Greenspire Linden	38mm (1.5") cal. 5 major branches in well-formed head; B&B or tree mover; wire basket; double stake.
Coniferous Shrubs		
48	<i>Juniperus horizontalis</i> 'Hughes' / Hughes Juniper	600mm (24") o., well formed plant, even growth. Container stock.
Deciduous Shrubs		
21	<i>Ribes alpinum</i> / Alpine Currant	2 gal. pot, 300-400mm (12-15") ht., min. 5 major basal branches. Well formed, bushy plants. Container stock.
4	<i>Rhus aromatica</i> 'Gro-Low' / Sumac Gro-Low	2 gal. pot, 300-400mm (12-15") ht., min. 5 major basal branches. Well formed, bushy plants. Container stock.

PLANT SPECIFICATION LIST (NIC)		
QTY	BOTANICAL/ COMMON NAME	SIZE/REMARKS
Coniferous Trees		
6	<i>Picea glauca</i> 'Densata' / Black Hills Spruce	1.8m (6') ht., Evenly branched, full bushy trees, no broken leaders, well branched to grade; B&B or tree mover, wire basket; double stake. Guy wire.
Deciduous Trees		
6	<i>Acer ginnala</i> / Amur Maple	38mm (1.5") cal. 5 major branches in well-formed head; B&B or tree mover; wire basket; double stake.
5	<i>Fraxinus nigra</i> 'Fall Gold' / Fall Gold Ash	38mm (1.5") cal. 5 major branches in well-formed head; B&B or tree mover; wire basket; double stake.
9	<i>Populus 'Prairie Sky'</i> / 'Prairie Sky Poplar	38mm (1.5") cal. 5 major branches in well-formed head; B&B or tree mover; wire basket; double stake.
3	<i>Syringa reticulata</i> / Japanese Tree Lilac	38mm (1.5") cal. 5 major branches in well-formed head; B&B or tree mover; wire basket; double stake.
5	<i>Tilia cordata</i> 'Greenspire' / Greenspire Linden	38mm (1.5") cal. 5 major branches in well-formed head; B&B or tree mover; wire basket; double stake.
6	<i>Ulmus davidiana</i> / Discovery Elm	38mm (1.5") cal. 5 major branches in well-formed head; B&B or tree mover; wire basket; double stake.

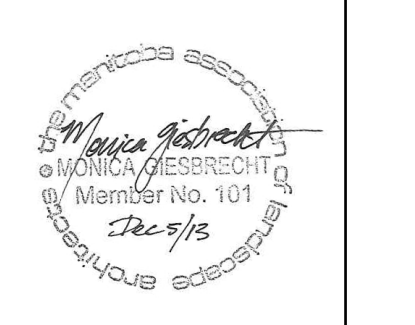


- PLANTING NOTES**
1. ENSURE THE LOCATION OF ALL EXISTING SERVICES ARE CLEARLY MARKED BY UTILITY ON SITE PRIOR TO CONSTRUCTION. THE CONTRACTOR WILL BE RESPONSIBLE FOR REPAIRING ALL DAMAGE CAUSED TO SERVICES DURING LANDSCAPE CONSTRUCTION.
 2. ALL DIMENSIONS ARE IN MILLIMETRES UNLESS OTHERWISE SPECIFIED.
 3. INSTALL SHRUB BEDS, SHRUBS, PERENNIALS, GROUNDCOVERS AND MULCH PER DRAWINGS AND SPECIFICATIONS.
 4. REMOVE EXTRA MATERIALS AND LEAVE THE SITE IN A CLEAN, TIDY CONDITION AFTER EACH PLANTING AREA IS COMPLETED.
 5. A SUBSTANTIAL PERFORMANCE INSPECTION WILL BE CONDUCTED.
 6. 30 DAY MAINTENANCE WILL BEGIN ONCE ALL PLANT MATERIAL HAS BEEN INSTALLED AND ACCEPTED.
 7. A CERTIFICATE OF TOTAL COMPLETION WILL BE ISSUED ONCE ALL DEFICIENCIES FROM THE SUBSTANTIAL PERFORMANCE INSPECTIONS ARE ADDRESSED.
 8. A ONE YEAR PLANT WARRANTY INSPECTION WILL BE CONDUCTED 12 MONTHS AFTER THE ISSUE OF THE CERTIFICATE OF SUBSTANTIAL PERFORMANCE. ALL PLANTS FOUND TO BE DEAD OR UNHEALTHY DUE TO PLANT STOCK QUALITY, EXCLUDING ACTS OF VANDALISM OR POOR MAINTENANCE, SHALL BE REPLACED AND WARRANTED FOR AN ADDITIONAL YEAR.
 9. ALL DAMAGE TO ADJACENT MATERIAL, SURFACES OR COMPLETED WORK MUST BE REPAIRED BY THE CONTRACTOR PRIOR TO PROJECT COMPLETION AT NO COST TO THE CITY.
 10. REPORT ANY ON SITE DISCREPANCIES TO THE CONTRACT ADMINISTRATOR IMMEDIATELY.

PLANTING LEGEND

EXISTING TREES TO REMAIN	
BLACK HILLS SPRUCE	
AMUR MAPLE	
FALL GOLD ASH	
PRAIRIE SKY POPLAR	
JAPANESE TREE LILAC	
GREENSPIRE LINDEN	
DISCOVERY ELM	
HUGHES JUNIPER	
ALPINE CURRANT	
SUMAC GRO-LOW	
SEM FALSE SPIREA	
DWARF KOREAN LILAC	
KARL FOERSTER REED GRASS	
ICE CARNIVAL DAYLILY	
WIDE BRIM HOSTA	
LOCAL GRANITE FEATURE BOULDERS (300-1200mm dia.)	
PROPERTY LINE	
PROPERTY SETBACK	

bridgmancollaborative
 Architecture
 678 MAIN STREET WINNIPEG, MB R3B 1E4
 204 488 3857 tel. 204 488 0216 fax. www.bridgmancollaborative.ca



THE CITY OF WINNIPEG PLANNING, PROPERTY AND DEVELOPMENT DEPARTMENT
 MUNICIPAL ACCOMMODATIONS DIVISION
 4TH FLOOR - 185 KING STREET R3B 1Y1

Project:
EAST ELMWOOD COMMUNITY CENTRE
 490 KEENLEYSIDE, WINNIPEG, MB
 COW Project Number: 2013-041
 BID Opportunity Number: 748-2013

Drawing Title:
PLANTING PLAN

# Issue/Revision	Date
0 Issued for Tender	2013-12-05

Design By: BD	Date: 12/05/13
Design Check: MG/BD	Date: 12/05/13
Drawn By: BD/KB	Date: 12/05/13
DWG Check: BD	Date: 12/05/13

Sheet No: **L104**
 4 of 7

This drawing is property of the Consultant and cannot be reproduced or used without the consent of the Consultant. The contractor is responsible for checking and verifying all levels and dimensions and shall report all discrepancies to the Consultant and obtain clarification prior to commencing work.

