

GENERAL PLAN
SCALE: 1:150

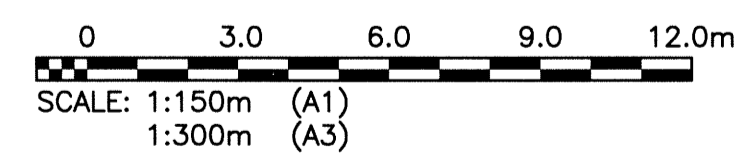
- GENERAL NOTES:**
- ALL WORKS TO BE IN ACCORDANCE WITH THE LATEST REVISION OF THE CITY OF WINNIPEG STANDARD CONSTRUCTION SPECIFICATIONS.
 - CONTRACTOR SHALL PROVIDE TEMPORARY SHORING WHERE REQUIRED IN ACCORDANCE WITH THE LATEST REVISION OF THE "CONSTRUCTION SAFETY ACT" OF THE PROVINCE OF MANITOBA DEPARTMENT OF LABOR AND IN ACCORDANCE WITH THE PROVINCE OF MANITOBA "W210 WORKPLACE SAFETY & HEALTH ACT" AND "GUIDELINES FOR EXCAVATION WORK". IF SHORING REQUIRED, CONTRACTOR TO SUPPLY STAMPED ENGINEERING SHORING DESIGN BY ENGINEER REGISTERED IN THE PROVINCE OF MANITOBA.
 - ALL ELEVATIONS SHOWN ON DRAWINGS TAKEN FROM CITY OF WINNIPEG RECORD DRAWINGS.
 - ADDITIONAL ELEVATIONS SHOWN ON AUBREY FPS ISOMETRIC INCLUDED IN APPENDIX B OF TENDER DOCUMENTS.

- FORCEMAIN REPLACEMENT NOTES:**
- FORCEMAIN SHALL BE PRESSURE TESTED IN ACCORDANCE WITH AWWA STANDARDS.
 - PROTECT WATER SERVICE FROM FREEZING DURING CONSTRUCTION.
 - RESTORE SITE TO PRE-CONSTRUCTION CONDITIONS.
 - BACKFILL EXCAVATION WITH CEMENT STABILIZED FILL. PROVIDE SAND BEDDING AROUND WATER SERVICES AND VENT PIPE.
 - NO STOCKPILING OF EXCAVATED MATERIAL ON SITE.
 - PROTECT EXISTING TREES DURING CONSTRUCTION.

- TEMPORARY PUMPING:**
- CONTRACTOR TO PROVIDE TEMPORARY BY-PASS PUMPING AS PER THE SPECIFICATIONS.
 - TEMPORARY PUMPING PLAN TO BE APPROVED BY THE CONTRACT ADMINISTRATOR PRIOR TO COMMENCEMENT OF CONSTRUCTION.
 - PUMPS MAY BE INSTALLED IN MH-A OR UPSTREAM OF GATE CHAMBER AND WEIR. DISCHARGE FLOW TO MH-B.
 - CRITICAL BASEMENT FLOODING EL. = 227.381
 - LOW MH RIM ELEV. = 230.43± (LOCATED AT WOLSLEY & ETHELBERT)
 - ALLOWABLE SHUT DOWN TIME: 6 HOURS (APPROXIMATE).
 - PROTECT TEMPORARY PUMPING FROM FREEZING.

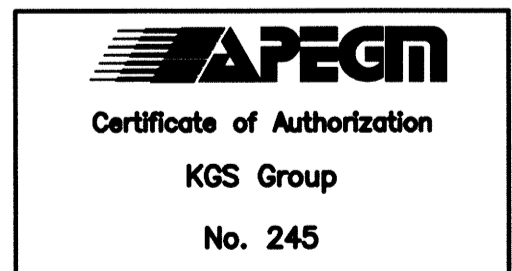
CONTRACTOR TO TEMPORARILY BUILD UP WEIR ELEVATION AS REQUIRED TO SATISFY THE PUMPING REQUIREMENTS OF THEIR TEMPORARY PUMPING PLAN. (WEIR ELEV. = 224.503) ALTERNATELY A NEW TEMPORARY WEIR CAN BE INSTALLED UPSTREAM OF THE FLAP GATE AND PUMPS PLACED UPSTREAM OF THIS TEMPORARY WEIR.

CONTRACTOR TO INSTALL TEMPORARY PLUG TO ISOLATE STATION DURING CONSTRUCTION (VERIFY DIA. PRIOR TO CONSTRUCTION). INTAKE TO LIFT STATION INV. = 223.42



METRIC

WHOLE NUMBERS INDICATE MILLIMETRES
DECIMALIZED NUMBERS INDICATE METRES



WARNING

- NOTIFY THE GAS COMPANY OF THE PROPOSED LOCATION OF EXCAVATION.
- TAKE PRECAUTION TO AVOID DAMAGE TO GAS COMPANY INSTALLATIONS.
- SEE PROVINCIAL REGULATION 210/72 FOR DETAILS.

PROPERTY LIMITS DELINEATION

DELINEATION OF PROPERTY LIMITS AS SHOWN ON THIS DWG DOES NOT REPRESENT A "LEGAL SURVEY". KGS GROUP MAKES NO REPRESENTATION OR WARRANTY AS TO THE ACCURACY OF PROPERTY LIMITS DELINEATED ON THIS DWG, NOR ON THE DIMENSIONAL ACCURACY OF DWG FEATURES RELATIVE TO THOSE PROPERTY LIMITS.

300 L.DS	LAND DRAINAGE SEWER	300 L.DS		TEST HOLE	
250 WWS	WASTE WATER SEWER	250 WWS	+	GUY WIRE	
	GAS		—	LIGHT STANDARD	
	HYDRO		—	BACK OF CURB	
	M.T.S.		—	CONCRETE	
150 WM	WATERMAIN	150 WM	—	ASPHALT	
+	HYDRANT	+	—	SIDEWALK	
⊗	VALVE	⊗	—	PROPERTY LINE	
○	MANHOLE	○	—	SURVEY BAR	
□	CATCH BASIN	□	—	GEODETIC BENCHMARK	
▽	CURB INLET	▽	—	ELEVATION	32.231
•	POLES T-MTS	•	—		
			—		
EXISTING	LEGEND-PLAN	PROPOSED	EXISTING	LEGEND-PLAN	PROPOSED

LOCATION APPROVED UNDERGROUND STRUCTURES

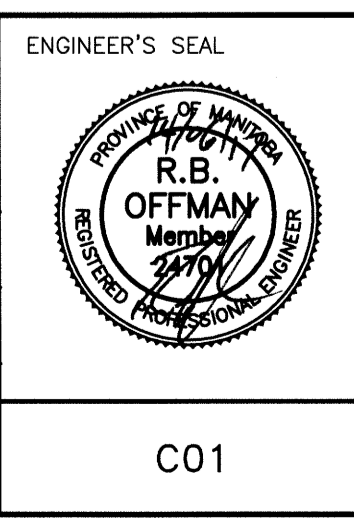
SUPV. U/G STRUCTURES COMMITTEE DATE

NOTE:
LOCATION OF UNDERGROUND STRUCTURES AS SHOWN ARE BASED ON THE BEST INFORMATION AVAILABLE BUT NO GUARANTEE IS GIVEN THAT ALL EXISTING UTILITIES ARE SHOWN OR THAT THE GIVEN LOCATIONS ARE EXACT. CONFIRMATION OF EXISTENCE AND EXACT LOCATION OF ALL SERVICES MUST BE OBTAINED FROM THE INDIVIDUAL UTILITIES BEFORE PROCEEDING WITH CONSTRUCTION.

B.M. -	
ELEV. -	
ISSUED FOR CONSTRUCTION	14/06/16
NO. REVISIONS	DATE

KGS GROUP CONSULTING ENGINEERS

DESIGNED BY	RBO	CHECKED BY	pp17
DRAWN BY	GEL	APPROVED BY	
HOR. SCALE:	AS NOTED	RELEASED FOR CONSTRUCTION:	K. ZUREK
VERTICAL:	N/A	DATE	14/06/16



THE CITY OF WINNIPEG
WATER AND WASTE DEPARTMENT

AUBREY WASTEWATER PUMPING STATION UPGRADE
1016 PALMERSTON AVE.

MUNICIPAL
FORCEMAIN REPLACEMENT
PLAN

SHEET 1 OF 1
CITY DRAWING NUMBER
1-0116L-C0001-001

P:\Projects\2013\13-0107-021\Doc\Control\obalsauca\DWG\13-0107-021-C01-Rev 0.dwg - Tab: C01 Plotted By: DBaroche 06/17/2014 [Tue 11:24am] PLOT 1:1 A-1