

**GENERAL NOTES:**

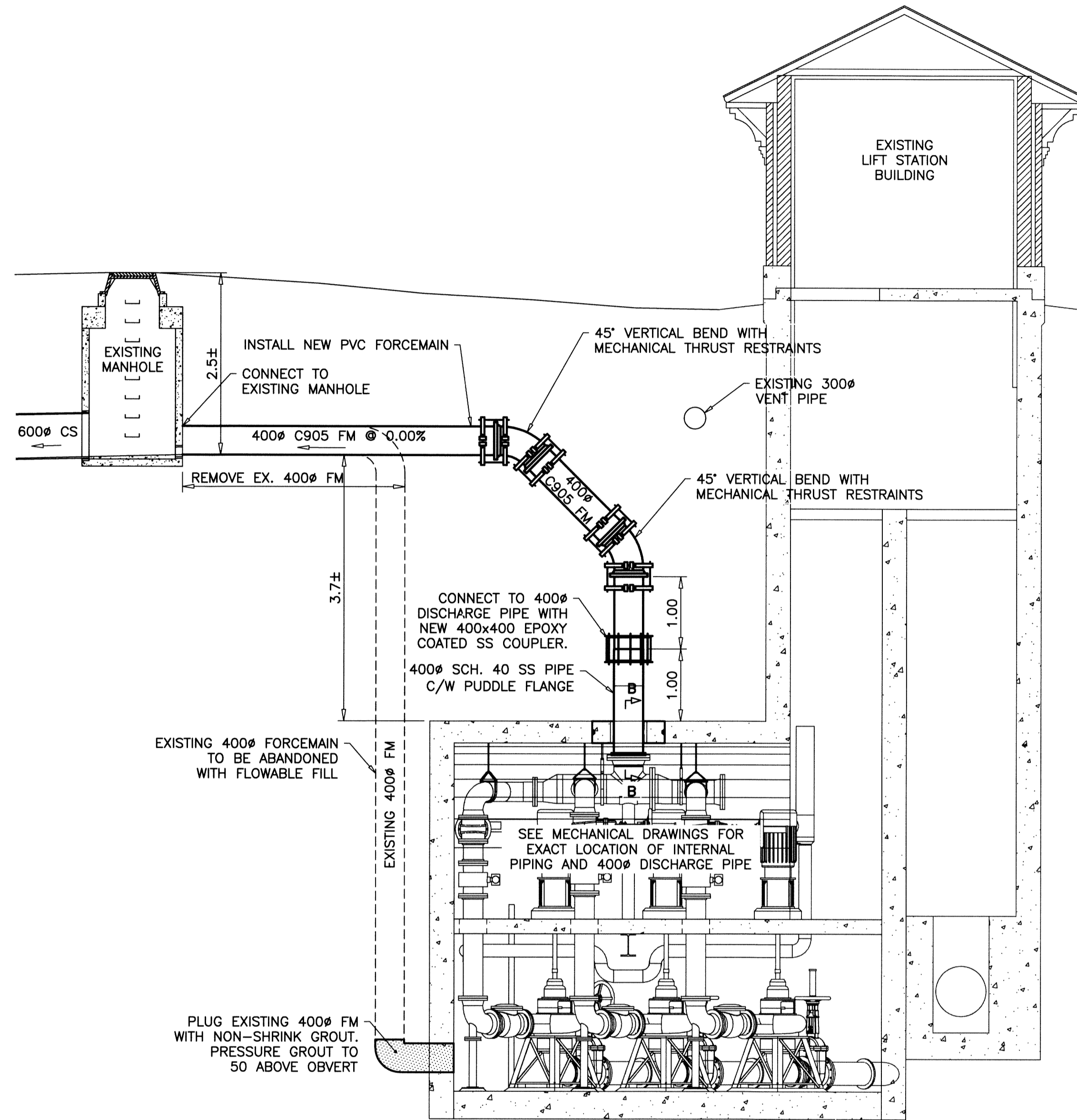
1. ALL WORKS TO BE IN ACCORDANCE WITH THE LATEST REVISION OF THE CITY OF WINNIPEG STANDARD CONSTRUCTION SPECIFICATIONS.
2. CONTRACTOR SHALL PROVIDE TEMPORARY SHORING WHERE REQUIRED IN ACCORDANCE WITH THE LATEST REVISION OF THE "CONSTRUCTION SAFETY ACT" OF THE PROVINCE OF MANITOBA DEPARTMENT OF LABOR AND IN ACCORDANCE WITH THE PROVINCE OF MANITOBA "W210 WORKPLACE SAFETY & HEALTH ACT" AND "GUIDELINES FOR EXCAVATION WORK". IF SHORING REQUIRED, CONTRACTOR TO SUPPLY STAMPED ENGINEERING SHORING DESIGN BY ENGINEER REGISTERED IN THE PROVINCE OF MANITOBA.
3. ALL ELEVATIONS SHOWN ON DRAWINGS TAKEN FROM CITY OF WINNIPEG RECORD DRAWINGS.
4. ADDITIONAL ELEVATIONS SHOWN ON AUBREY FPS ISOMETRIC INCLUDED IN APPENDIX B OF TENDER DOCUMENTS.

**FORCEMAIN REPLACEMENT NOTES:**

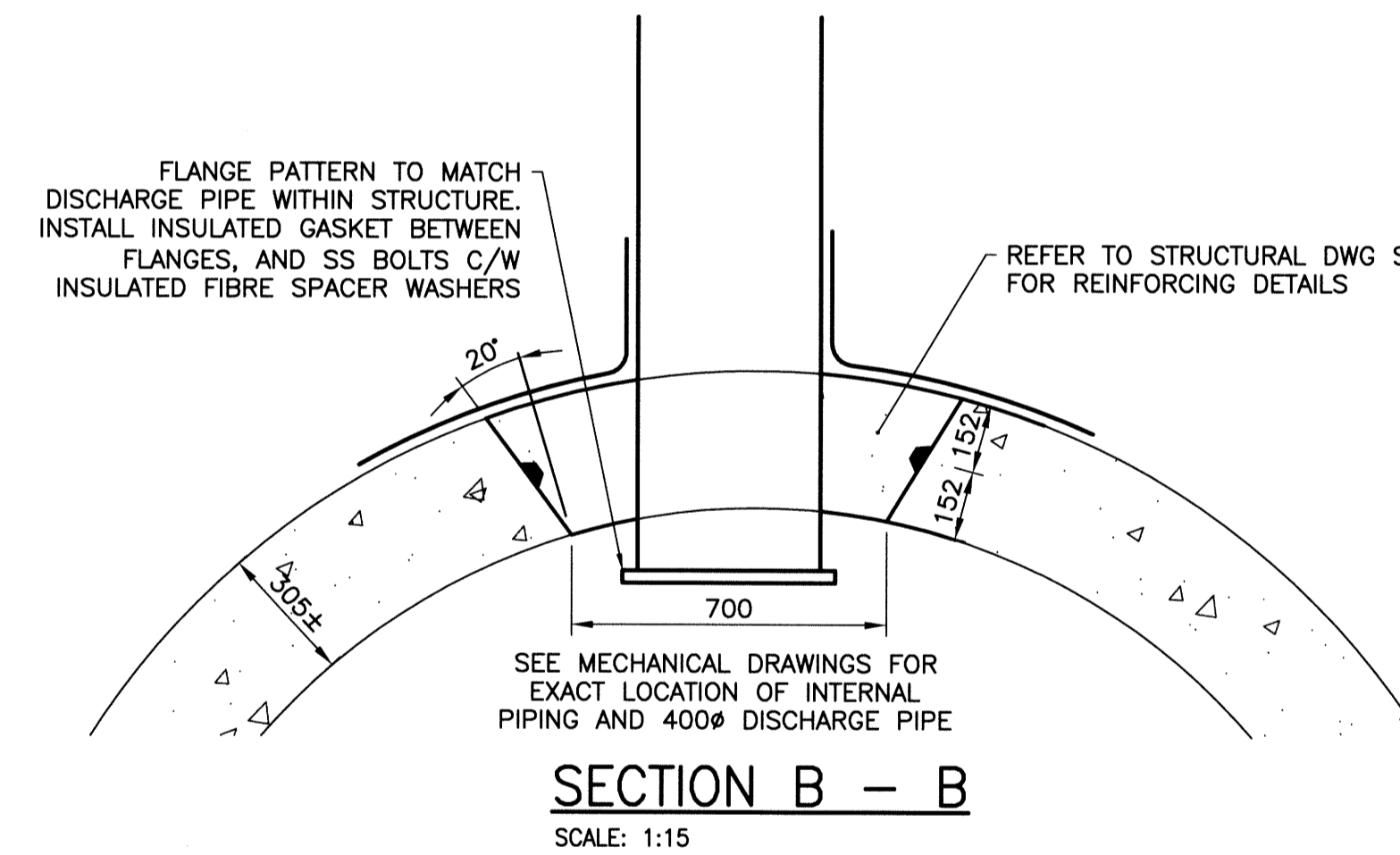
5. FORCEMAIN SHALL BE PRESSURE TESTED IN ACCORDANCE WITH AWWA STANDARDS.
6. PROTECT WATER SERVICE FROM FREEZING DURING CONSTRUCTION.
7. RESTORE SITE TO PRE-CONSTRUCTION CONDITIONS.
8. BACKFILL EXCAVATION WITH CEMENT STABILIZED FILL. PROVIDE SAND BEDDING AROUND WATER SERVICES AND VENT PIPE.
9. NO STOCKPILING OF EXCAVATED MATERIAL ON SITE.
10. PROTECT EXISTING TREES DURING CONSTRUCTION.

**TEMPORARY PUMPING:**

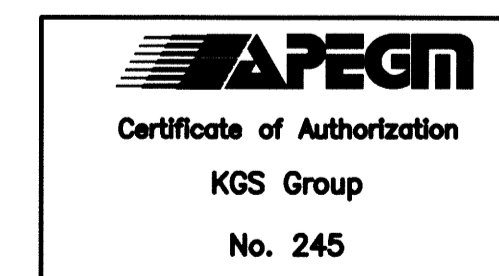
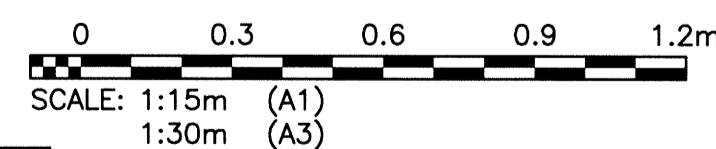
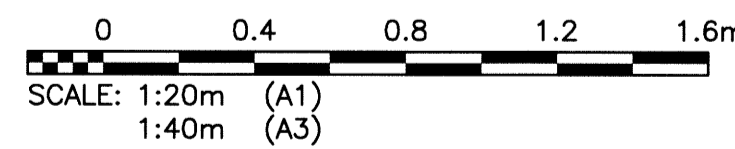
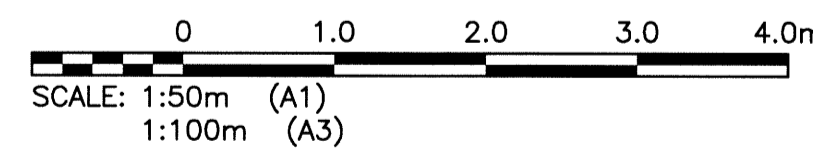
11. CONTRACTOR TO PROVIDE TEMPORARY BY-PASS PUMPING AS PER THE SPECIFICATIONS.
  - TEMPORARY PUMPING PLAN TO BE APPROVED BY THE CONTRACT ADMINISTRATOR PRIOR TO COMMENCEMENT OF CONSTRUCTION.
  - PUMPS MAY BE INSTALLED IN MH-A OR UPSTREAM OF GATE CHAMBER AND WEIR. DISCHARGE FLOW TO MH-B.
  - CRITICAL BASEMENT FLOODING EL. = 227.381
  - LOW MH RIM ELEV. = 230.43± (LOCATED AT WOLSLEY & ETHELBERG)
  - ALLOWABLE SHUT DOWN TIME: 6 HOURS (APPROXIMATE).
  - PROTECT TEMPORARY PUMPING FROM FREEZING.



**SECTION A - A**  
SCALE: 1:50



**SECTION B - B**  
SCALE: 1:15



**METRIC**

WHOLE NUMBERS INDICATE MILLIMETRES  
DECIMALIZED NUMBERS INDICATE METRES

**WARNING**

1. NOTIFY THE GAS COMPANY OF THE PROPOSED LOCATION OF EXCAVATION.
2. TAKE PRECAUTION TO AVOID DAMAGE TO GAS COMPANY INSTALLATIONS.
3. SEE PROVINCIAL REGULATION 210/72 FOR DETAILS.

P:\Projects\2013\13-0107-021\Drawings\DWG\13-0107-021-C02-Rev 0.dwg - Tab: C02 Plotted By: Doroche 06/17/2014 [Tue 11:23am] PLOT 1: A-

300 LGS	LAND DRAINAGE SEWER	300 LGS					
250 WWS	WASTE WATER SEWER	250 WWS	+	TEST HOLE			
	GAS		-	GUY WIRE			
	HYDRO		••	LIGHT STANDARD			
	M.T.S.		—	BACK OF CURB			
150 WM	WATERMAIN	150 WM	—	CONCRETE			
+	HYDRANT	+	—	ASPHALT			
+	VALVE	+	—	SIDEWALK			
○	MANHOLE	○	—	PROPERTY LINE			
□	CATCH BASIN	□	+	SURVEY BAR			
▽	CURB INLET	▽	+	GEODETIC BENCHMARK			
•	POLES	•	+	ELEVATION	(32.231)		
EXISTING	LEGEND-PLAN	PROPOSED	EXISTING	LEGEND-PLAN	PROPOSED	EXISTING	LEGEND-PLAN

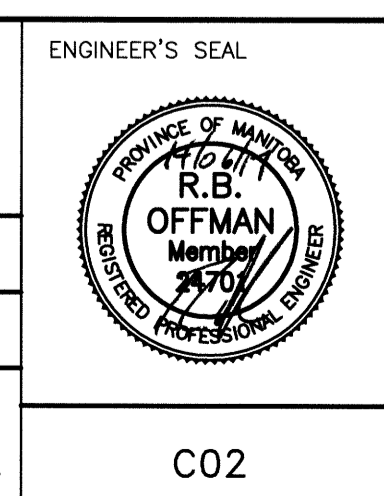
**LOCATION APPROVED UNDERGROUND STRUCTURES**

SUPV. U/G STRUCTURES DATE  
COMMITTEE

NOTE:  
LOCATION OF UNDERGROUND STRUCTURES AS SHOWN ARE BASED ON THE BEST INFORMATION AVAILABLE BUT NO GUARANTEE IS GIVEN THAT ALL EXISTING UTILITIES ARE SHOWN OR THAT THE GIVEN LOCATIONS ARE EXACT. CONFIRMATION OF EXISTENCE AND EXACT LOCATION OF ALL SERVICES MUST BE OBTAINED FROM THE INDIVIDUAL UTILITIES BEFORE PROCEEDING WITH CONSTRUCTION.

B.M. -			
ELEV. -			
0	ISSUED FOR CONSTRUCTION	14/06/16	KG
NO.	REVISIONS	DATE	BY
		13/08/30	

<b>KGS GROUP</b> CONSULTING ENGINEERS		ENGINEER'S SEAL
DESIGNED BY	RBO	CHECKED BY
DRAWN BY	GEL	APPROVED BY
HOR. SCALE:	AS NOTED	RELEASED FOR CONSTRUCTION:
VERTICAL:	N/A	K. ZUREK
DATE	13/08/30	DATE
		14/06/16



**THE CITY OF WINNIPEG**  
WATER AND WASTE DEPARTMENT

AUBREY WASTEWATER PUMPING STATION UPGRADE  
1016 PALMERSTON AVE.

**MUNICIPAL**  
FORCEMAIN REPLACEMENT  
SECTIONS & DETAILS

SHEET 1 OF 1  
CITY DRAWING NUMBER  
1-0116L-C002-001