

DISCONNECT AND REMOVE ALL EXISTING DISTRIBUTION EQUIPMENT AND ASSOCIATED CONDUITS AND JUNCTION BOXES

EXISTING MAST HEAD AND ALL ASSOCIATED CONDUITS TO BE REMOVED

EXISTING BRACKETS TO BE REMOVED

REMOVE EXISTING SCADA CABINET AND TURN OVER TO OWNER

MTS TELEPHONE SERVICE (NOTE 6)

CSO TERMINATION PANEL (NOTE 3)

EXISTING CSTE (NOTE 1)

NOTE 4

EXISTING ELECTRICAL SERVICE METER (NOTE 2)

COVER OVER CSO INSTRUMENT CABLES (NOTE 3)

EXISTING CONDUIT (NOTE 7)

CSO LEVEL TRANSMITTER (NOTE 3)

NOTES:

1. DISCONNECT AND REMOVE EXISTING CSTE. COORDINATE WITH MANITOBA HYDRO TO DISCONNECT POWER TO CSTE FROM TRANSFORMER AND REMOVE ALL CURRENT AND VOLTAGE METERING TRANSFORMERS.
2. REMOVE EXISTING METER SOCKET AND ENCLOSURE. RETAIN METER SOCKET FOR INSTALLATION ON NEW CSTE METER ENCLOSURE. COORDINATE WITH MANITOBA HYDRO TO REMOVE METER.
3. DISCONNECT INSTRUMENT CABLES FROM CSO TERMINATION PANEL AND LEVEL TRANSMITTER, PULL BACK TO OUTSIDE OF BUILDING, AND PROTECT CABLES FOR FUTURE RECONNECTION TO NEW SCADA PANEL. REMOVE COVER OVER CSO INSTRUMENT CABLES AND RETAIN FOR FUTURE REINSTALLATION.
4. REMOVE ALL ELECTRICAL EQUIPMENT IN HATCHED AREAS INCLUDING, BUT NOT LIMITED, TO SWITCHES, RECEPTACLES, CONDUIT, WIRING, PUSH BUTTONS, AND LIGHT FIXTURES.
5. REMOVE ALL ELECTRICAL EQUIPMENT AND LIGHTING IN ELECTRICAL ROOM EXCEPT AS OTHERWISE NOTED.
6. COORDINATE WITH MTS THE REMOVAL AND REINSTALLATION OF TELEPHONE SERVICE.
7. CONTRACTOR TO DETERMINE PURPOSE FOR CONDUIT EXITING BUILDING AND OBTAIN DIRECTION TO REMOVE COMPLETELY OR RETAIN FOR REINSTALLATION.

NOTES:



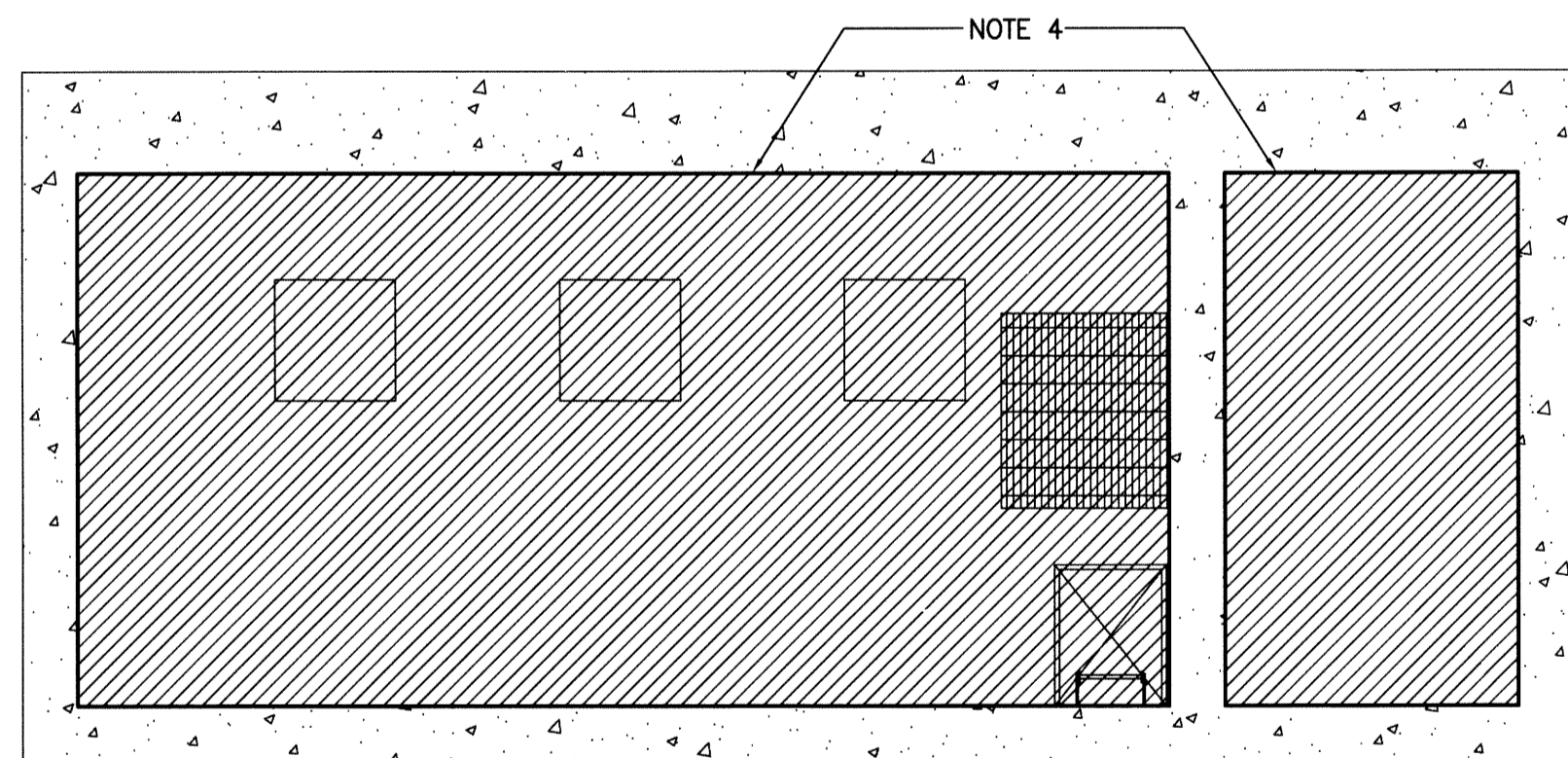
EQUIPMENT TO BE REMOVED

ELECTRICAL ROOM FLOOR PLAN (NOTE 5)

SCALE: 1:40

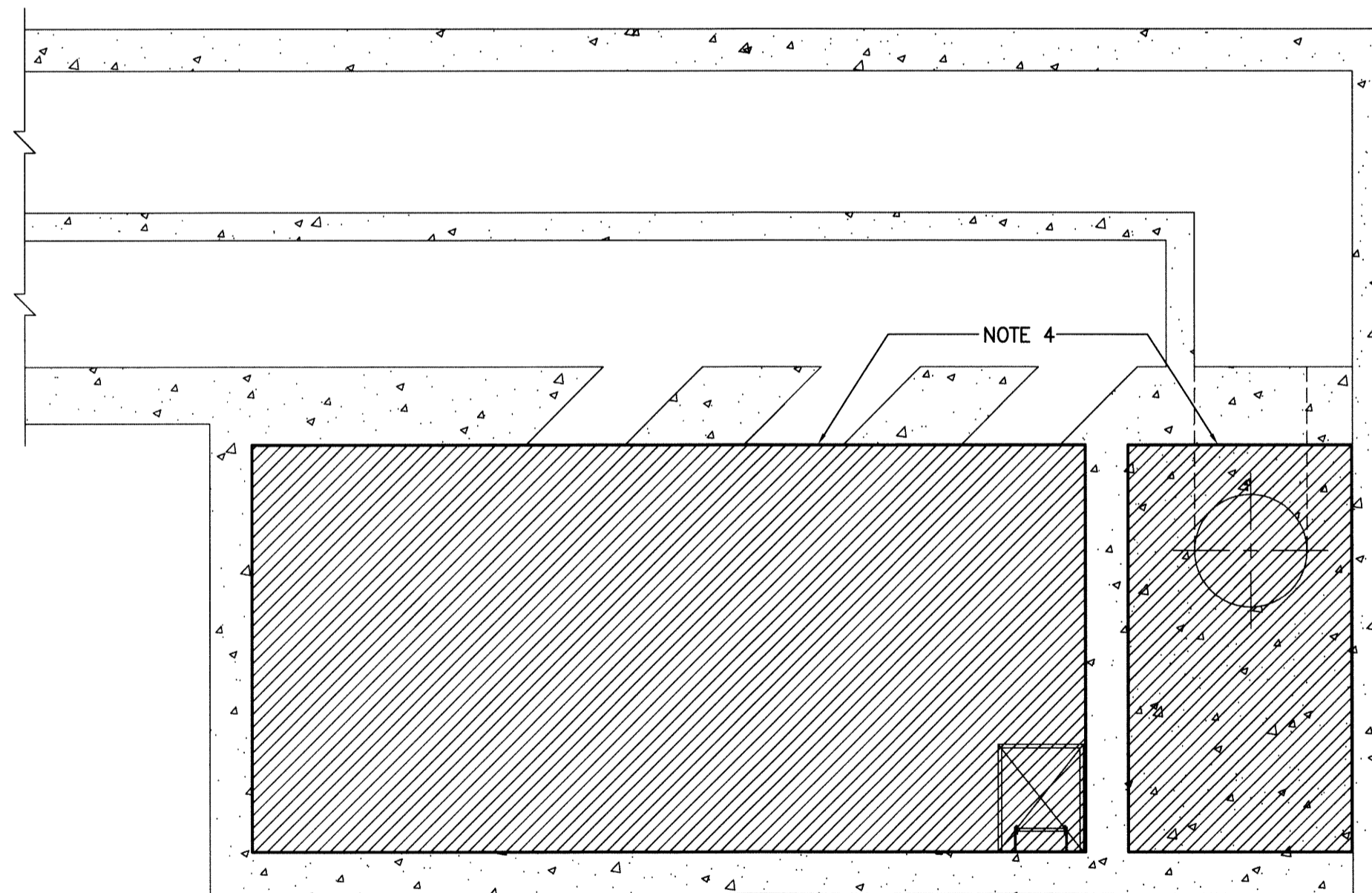
FLOOR PLAN - LOWER LEVEL 1

SCALE: 1:40



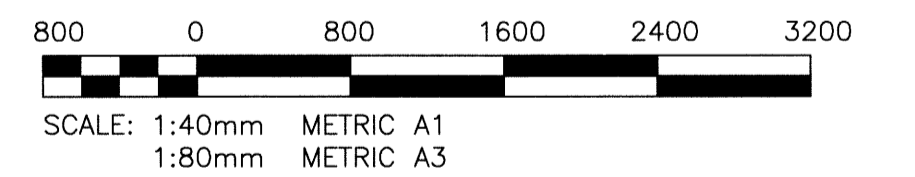
MOTOR ROOM - FLOOR PLAN

SCALE: 1:40



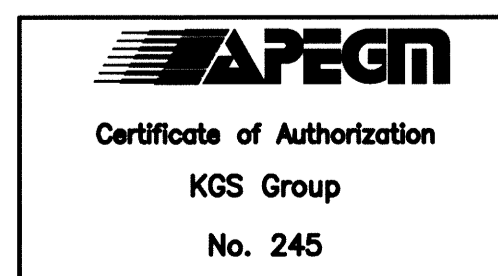
FLOOR PLAN - PUMP ROOM

SCALE: 1:40



METRIC

WHOLE NUMBERS INDICATE MILLIMETRES
DECIMALIZED NUMBERS INDICATE METRES



FIELD BOOK #		KGS GROUP CONSULTING ENGINEERS		ENGINEER'S SEAL	
POSTED TO LBIS		DESIGNED BY DDW	CHECKED BY <i>JMS</i>		
		DRAWN BY GCN	APPROVED BY		
		HOR. SCALE AS NOTED	RELEASED FOR CONSTRUCTION		
0 ISSUED FOR CONSTRUCTION 14/06/16 JAB		VERTICAL AS NOTED	K.ZUREK	E15	
NO. REVISIONS	DATE	BY	DATE	2013 07 25	2014/06/16

THE CITY OF WINNIPEG
WATER AND WASTE DEPARTMENT

AUBREY WASTEWATER PUMPING STATION UPGRADE
1016 PALMERSTON AVE
ELECTRICAL
DEMOLITION PLANS

SHEET X OF X
CITY DRAWING NUMBER
1-0116L-E0012-001