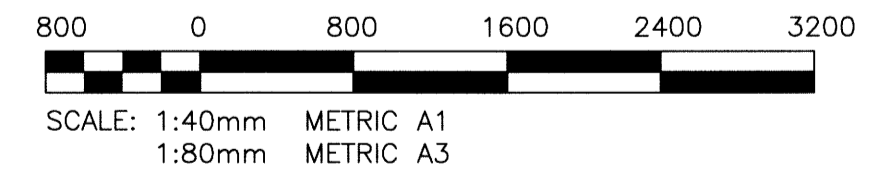


A
M07 HVAC - SECTION

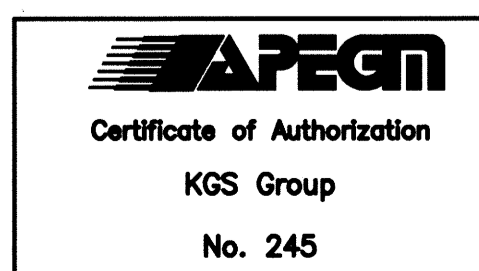
- GENERAL NOTES:**
1. CONFORM TO NATIONAL PLUMBING CODE AND AUTHORITY HAVING JURISDICTION FOR DESIGN, SUPPLY AND INSTALLATION OF PLUMBING AND VENT SYSTEMS.
 2. EQUIPMENT LOCATIONS, DUCT AND PIPE ROUTING INDICATED ON THE DRAWINGS IS APPROXIMATE ONLY. CONFIRM IN THE FIELD. REROUTE DUCTWORK AND PIPING AS REQUIRED TO ELIMINATE FIELD INTERFERENCES, WITH BUILDING STRUCTURES, ELECTRICAL, ETC.. CONFIRM CHANGES WITH CONTRACT ADMINISTRATOR. COORDINATE WORK WITH ALL SUBTRADES. WHERE DIMENSIONS ARE INDICATED FOR PIPING, DUCTWORK, DUCT SIZES, EQUIPMENT SIZES, ETC. THESE ARE FOR BIDDING PURPOSES ONLY. THE CONTRACTOR IS RESPONSIBLE TO VERIFY ALL DIMENSIONS IN THE FIELD PRIOR TO ORDERING EQUIPMENT AND COMMENCING INSTALLATION WITHOUT EXTRA CHARGES TO THE PROJECT. THE CONTRACTOR IS RESPONSIBLE TO ENSURE ALL EQUIPMENT, DUCTWORK AND PIPING FITS IN THE SPACE AVAILABLE AND TO MAINTAIN THE GENERAL DESIGN INTENT FOR THE SYSTEMS.
 3. PROVIDE CUTTING AND PATCHING AND ALL WALL PENETRATIONS. SEAL ALL WALL PENETRATIONS AND DUCTWORK WATER, AIR AND WEATHER TIGHT.
 4. PERFORM WORK IN ACCORDANCE WITH ALL APPLICABLE CODES AND REGULATIONS AND CONFORM TO SMACNA STANDARDS FOR SUPPLY AND INSTALLATION OF DUCTWORK.
 5. REVIEW EQUIPMENT LOCATIONS WITH CONTRACT ADMINSTRATOR PRIOR TO INSTALLATION.

- KEYNOTES:**
- 1 SIZE LOUVER AND MOTORIZED DAMPER TO MATCH EXISTING OPENING. CONTRACTOR TO SITE VERIFY SIZE.
 - 2 INSULATE DUCTING FOR FULL DISTANCE FROM OUTSIDE AIR INTAKE LOUVER TO DUCT HEATER.

MOTORIZED DAMPER SCHEDULE			
UNIT No.	MAKE & MODEL	SIZE	NOTES
FCV-L611-1	TAMCO 9000BF C/W BELIMO ACTUATOR	300x300	SPRING-RETURN CLOSED 24V MODULATING ACTUATOR PROVIDE 4-20mA AND/OR 2-10VDC CONTROL SIGNAL
FCV-L611-2	TAMCO 9000BF C/W BELIMO ACTUATOR	300x300	SPRING-RETURN CLOSED 24V MODULATING ACTUATOR PROVIDE 4-20mA AND/OR 2-10VDC CONTROL SIGNAL
FV-L611-3	TAMCO 9000BF C/W BELIMO ACTUATOR	1	SPRING-RETURN CLOSED 24V 2-POSITION ACTUATOR



METRIC
WHOLE NUMBERS INDICATE MILLIMETRES
DECIMALIZED NUMBERS INDICATE METRES



FIELD BOOK #:		KGS GROUP CONSULTING ENGINEERS		ENGINEER'S SEAL 	
POSTED TO LBIS		DESIGNED BY DJ	CHECKED BY <i>RP</i>	AUBREY WASTEWATER PUMPING STATION UPGRADE 1016 PALMERSTON AVE. MECHANICAL HVAC & PLUMBING - SECTION	
		DRAWN BY RP	APPROVED BY		
		HDR. SCALE AS NOTED	RELEASED FOR CONSTRUCTION	CITY DRAWING NUMBER	
0 ISSUED FOR CONSTRUCTION	14/06/16	VERTICAL AS NOTED	K. ZURIK	1-0116L-M0008-001	
NO. REVISIONS	DATE BY	DATE 2013 07 24	DATE 2014/06/16		

THE CITY OF WINNIPEG
WATER AND WASTE DEPARTMENT

AUBREY WASTEWATER PUMPING STATION UPGRADE
1016 PALMERSTON AVE.
MECHANICAL
HVAC & PLUMBING - SECTION