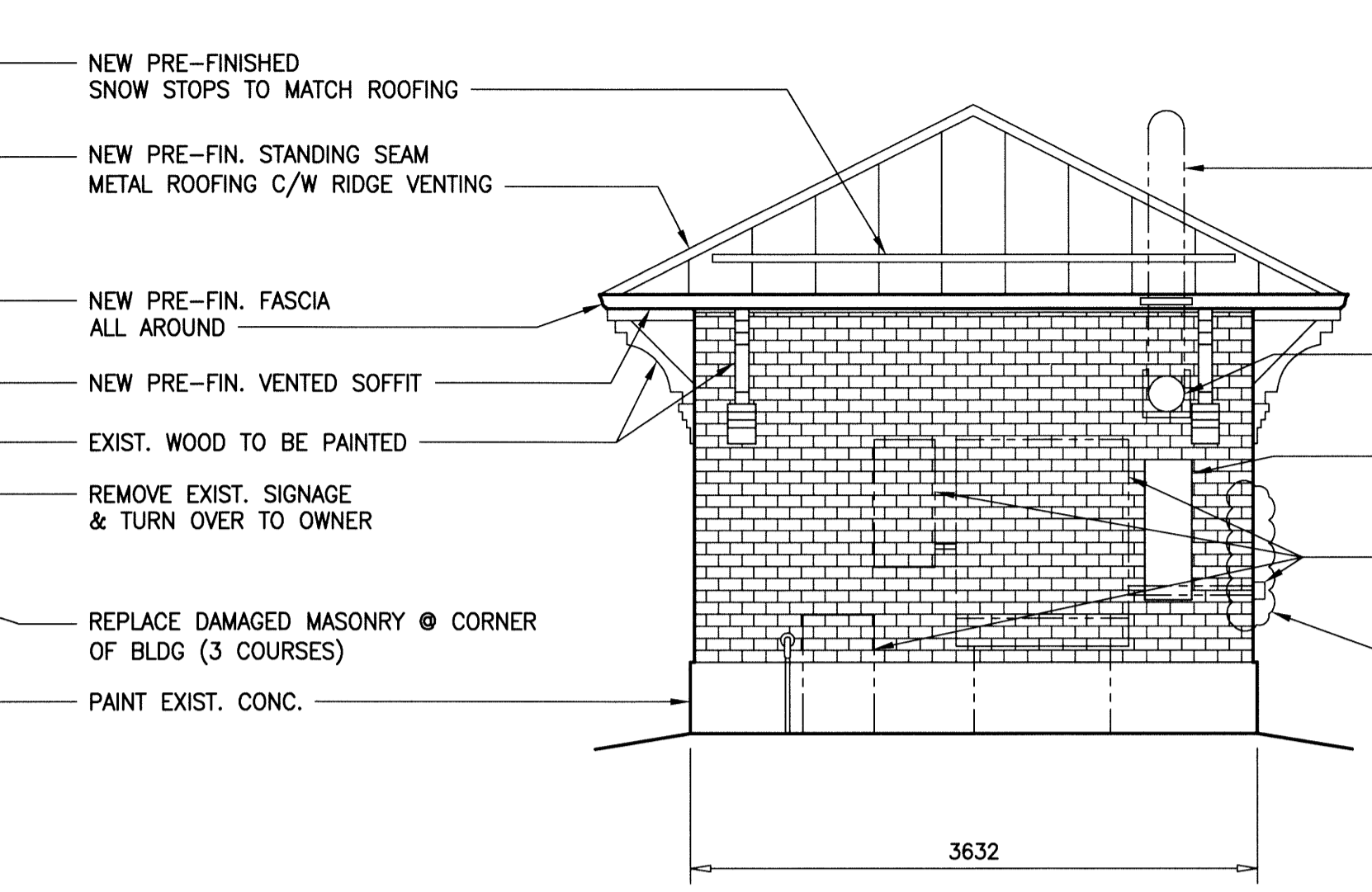
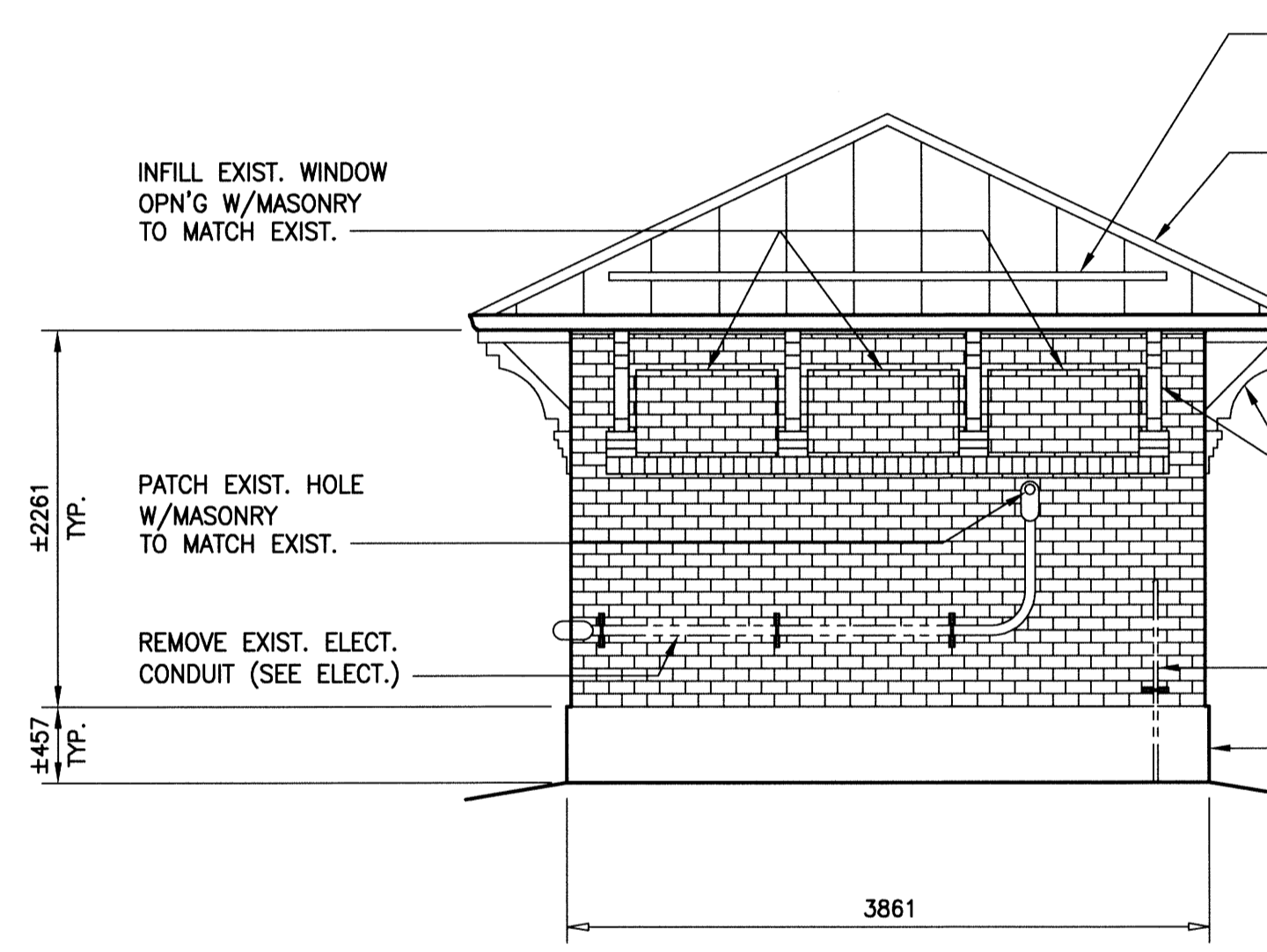


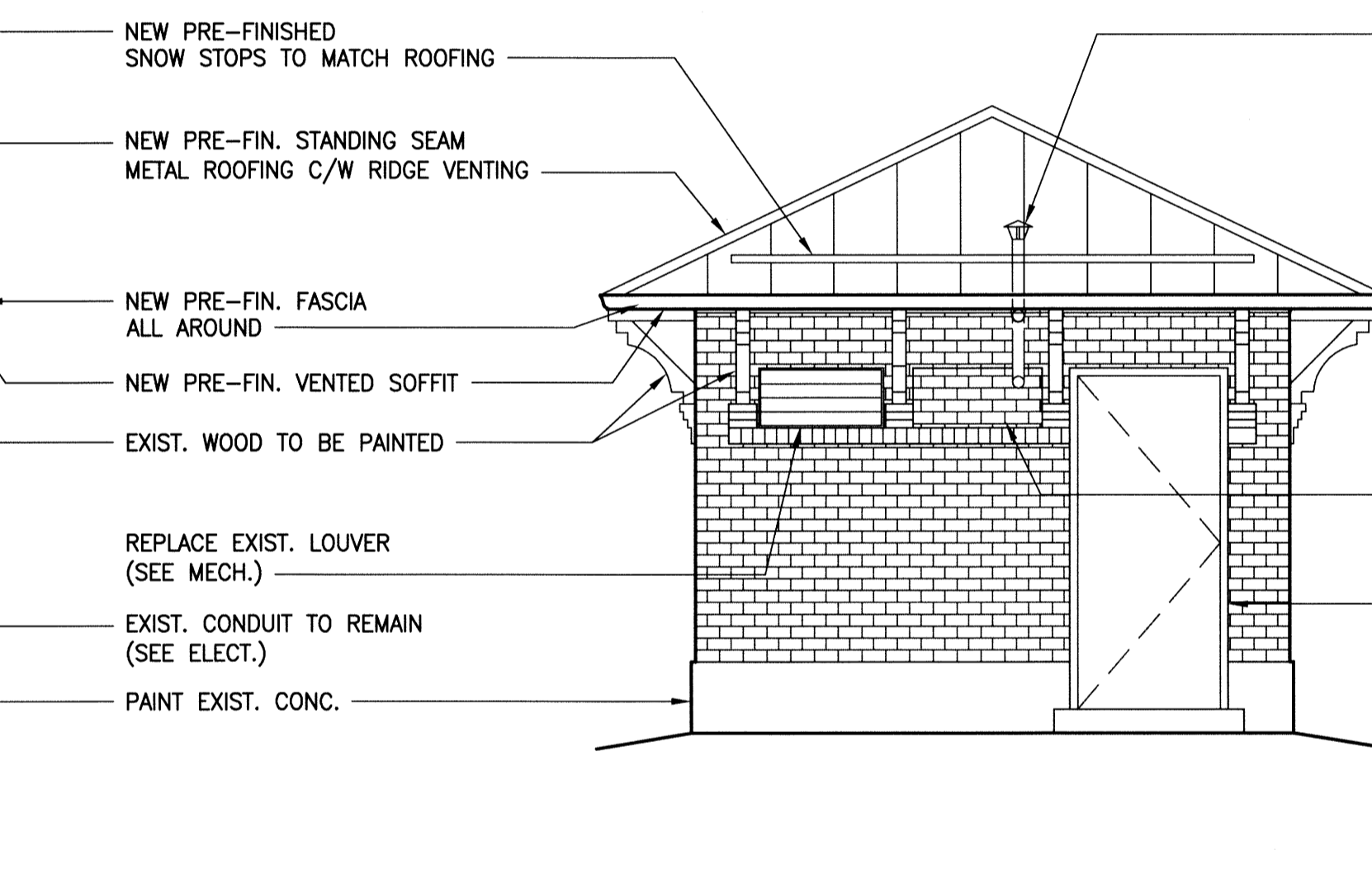
NORTH ELEVATION
SCALE: 1:40



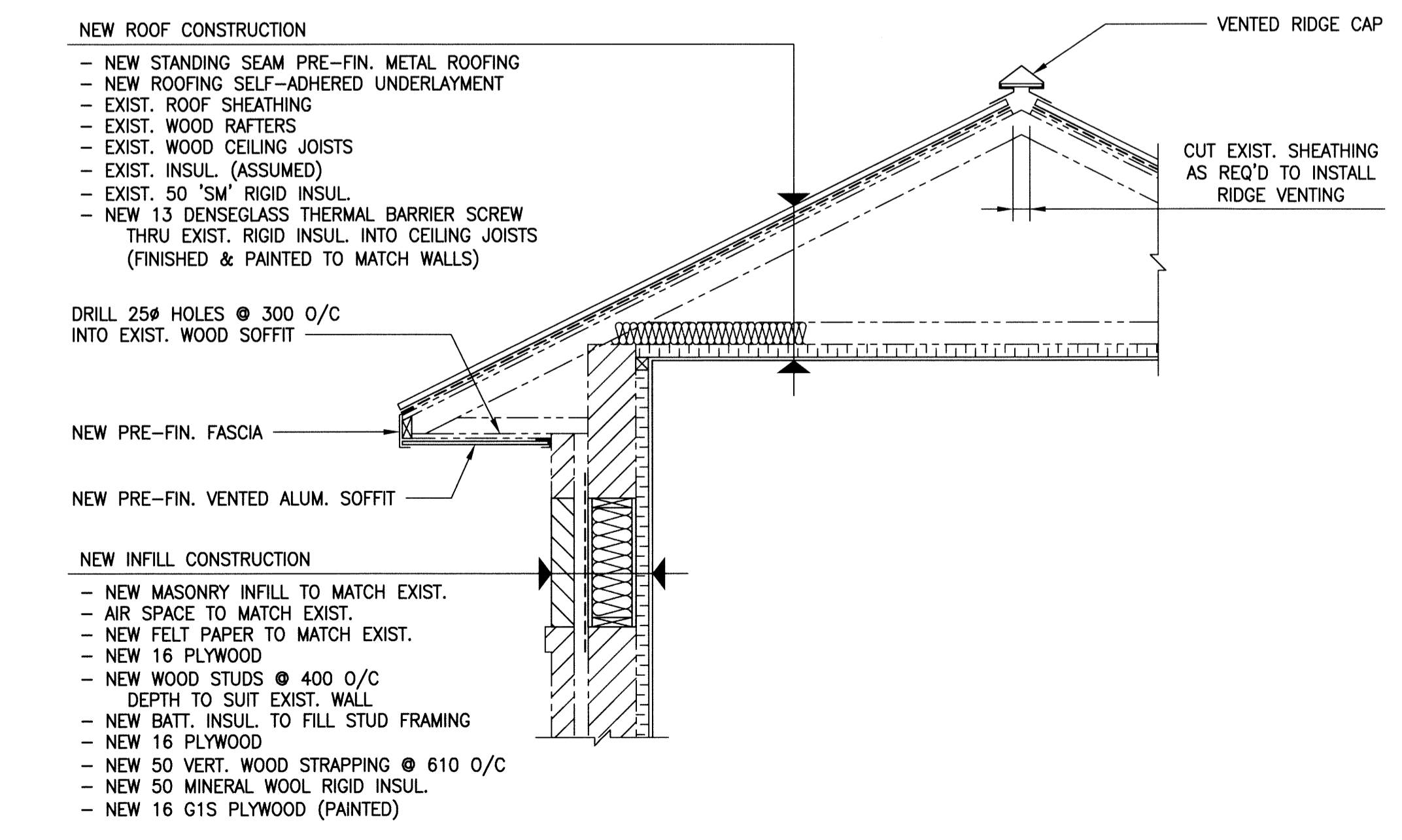
SOUTH ELEVATION
SCALE: 1:40



EAST ELEVATION
SCALE: 1:40



WEST ELEVATION
SCALE: 1:40



- NEW ROOF CONSTRUCTION**
- NEW STANDING SEAM PRE-FIN. METAL ROOFING
 - NEW ROOFING SELF-ADHERED UNDERLAYMENT
 - EXIST. ROOF SHEATHING
 - EXIST. WOOD RAFTERS
 - EXIST. WOOD CEILING JOISTS
 - EXIST. INSUL. (ASSUMED)
 - EXIST. 50 "SM" RIGID INSUL.
 - NEW 13 DENSEGLASS THERMAL BARRIER SCREW THRU EXIST. RIGID INSUL. INTO CEILING JOISTS (FINISHED & PAINTED TO MATCH WALLS)

DRILL 25# HOLES @ 300 O/C INTO EXIST. WOOD SOFFIT

NEW PRE-FIN. FASCIA
NEW PRE-FIN. VENTED ALUM. SOFFIT

- NEW INFILL CONSTRUCTION**
- NEW MASONRY INFILL TO MATCH EXIST.
 - AIR SPACE TO MATCH EXIST.
 - NEW FELT PAPER TO MATCH EXIST.
 - NEW 16 PLYWOOD
 - NEW WOOD STUDS @ 400 O/C DEPTH TO SUIT EXIST. WALL
 - NEW BATT. INSUL. TO FILL STUD FRAMING
 - NEW 16 PLYWOOD
 - NEW 50 VERT. WOOD STRAPPING @ 610 O/C
 - NEW 50 MINERAL WOOL RIGID INSUL.
 - NEW 16 G1S PLYWOOD (PAINTED)

INSTALL NEW CM-CYCLONE TROLLEY HOIST 1 1/2 TON CAPACITY 50 FT. LIFT C/W CHAIN CONTAINER

EXPOSE EXIST. LIFTING BEAM SUPPORT COLUMNS TO VERIFY CAPACITY

EXTENT OF EXIST. INSUL. TO BE REMOVED
REPLACE WITH:
- MINERAL WOOL BOARD INSUL.
- WOOD STRAPPING @ 610 O/C
- 6 MIL. POLY
- 16 G1S PLYWOOD (PAINTED)

SURFACE PREPARE EXIST. PAINTED CONC. (ALL LEVELS)

INSTALL NEW LIFTING HOOK SEE DETAIL 10, DWG S03

REMOVE AND PATCH EXIST. EPOXY INJECTION PORTS ON ARCHED OPENING W/ MORTAR GROUT

INSTALL NEW HSS 152x6.4 C/W 16 THK. BASEPLATE & 4-16# S.S. ANCHOR BOLTS BELOW VERTICAL DISCHARGE PIPE PENETRATING ROOF. HSS TO BE INSTALLED TIGHT WITH PIPES IN A DRY/DEWATERED STATE

REMOVE EXIST. STACK (SEE MECH.)

REMOVE EXIST. LIFTING EYES & INSTALL NEW LIFTING EYES CENTERED ABOVE MOTORS SEE DETAIL 2, S03

REPAIR LEAKS IN MOTOR ROOM WALLS WITH FLEXIBLE POLYURETHANE RESIN INJECTION ACCEPTABLE PRODUCT: MULTIURETHANES

INFILL EXIST. WINDOW OPN'G W/MASONRY TO MATCH EXIST.

PAINT EXIST. DOOR

INSTALL NEW TRANSFORMER FIRE/BLAST WALL SEE DWG S05

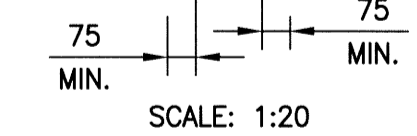
REMOVE EXIST. LIFTING EYES & U-BOLT. INSTALL NEW LIFTING EYES HOOK ABOVE PUMPS SEE DETAIL 2, S03

INSTALL NEW W310x39 TIGHT TO UNDERSIDE OF FLOOR SLAB SEE DETAIL 2, DWG S05

REINFORCE MOTOR ROOM FLOOR PRIOR TO CORING & MOTOR INSTALLATION SEE DETAIL 2, DWG S04

PROVIDE 50± GROUT BELOW PUMP STANDS & PIPE SUPPORTS (SIKA 212)

REPAIR SPALLS ON CEILING 3 LOC. SEE DETAIL 3, DWG S03



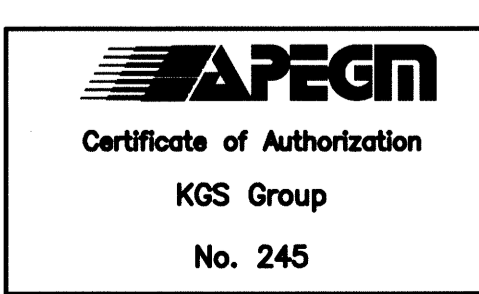
SCALE: 1:20

A SECTION
SCALE: 1:40

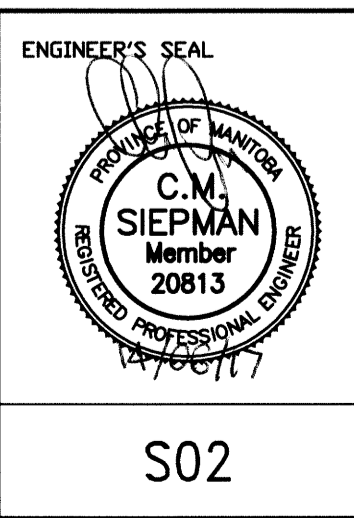


SCALE: 1:40mm METRIC A1
1:80mm METRIC A3

METRIC
WHOLE NUMBERS INDICATE MILLIMETRES
DECIMALIZED NUMBERS INDICATE METRES



FIELD BOOK #:		KGS GROUP CONSULTING ENGINEERS	
POSTED TO LBIS		DESIGNED BY: KRJ	CHECKED BY: CMS
		DRAWN BY: FBV	APPROVED BY:
		HOR. SCALE: AS NOTED	RELEASED FOR CONSTRUCTION: K. ZUREK
		VERTICAL: AS NOTED	
0 ISSUED FOR CONSTRUCTION	14/06/16	DATE: 2013 07 18	DATE: 2014 06 16
NO. REVISIONS	DATE	BY	



THE CITY OF WINNIPEG
WATER AND WASTE DEPARTMENT

AUBREY WASTEWATER PUMPING STATION UPGRADE
1016 PALMERSTON AVE.

STRUCTURAL
ELEVATIONS & SECTIONS

SHEET 1 OF 1
CITY DRAWING NUMBER
1-0116L-S0002-001