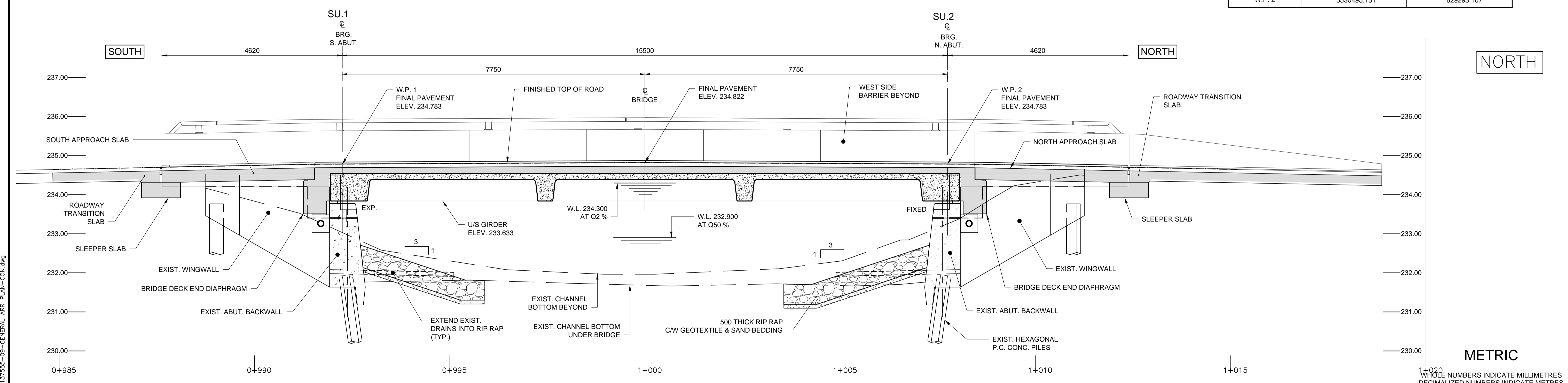


NOTE:

- CONTRACT INCLUDES ELECTROCHEMICAL CHLORIDE EXTRACTION OF ABUTMENTS AND WINGWALLS AS DESCRIBED IN THE SPECIFICATIONS.
- PROTECT UNDERGROUND UTILITIES - SEE GENERAL NOTES.

WORKING POINT COORDINATES		
LOCAL COORDINATE SYSTEM (GROUND DISTANCES)		
W.P. No.	NORTHING	EASTING
W.P. 1	5530479.636	629292.699
W.P. 2	5530495.131	629293.107



METRIC
WHOLE NUMBERS INDICATE MILLIMETRES
DECIMALIZED NUMBERS INDICATE METRES

G:\CAD\137555\09-Structural\01-General\137555-09-GENERAL_ARR_PLAN-CON.dwg



B.M. ELEV.	DESIGNED BY	SSR
	DRAWN BY	NBG
	CHECKED BY	CDW
	APPROVED BY	MBL
	HOR. SCALE	AS SHOWN
	VERTICAL SCALE	AS SHOWN
0 ISSUED FOR TENDER	13/11/07	SSR
NO. REVISIONS	DATE	BY
	13/11/07	



ENGINEER'S SEAL
PROVINCE OF MANITOBA
Nov 7/13
S.S. RIHAL
REGISTERED PROFESSIONAL ENGINEER

THE CITY OF WINNIPEG
PUBLIC WORKS DEPARTMENT

RECONSTRUCTION OF THE ST. JAMES STREET BRIDGE OVER OMAND'S CREEK

CITY DRAWING NUMBER: B126-13-03
SHEET 3 OF 26
CONSULTANT DRAWING NUMBER

GENERAL ARRANGEMENT

CONSULTANT PROJECT NUMBER: 13-7555