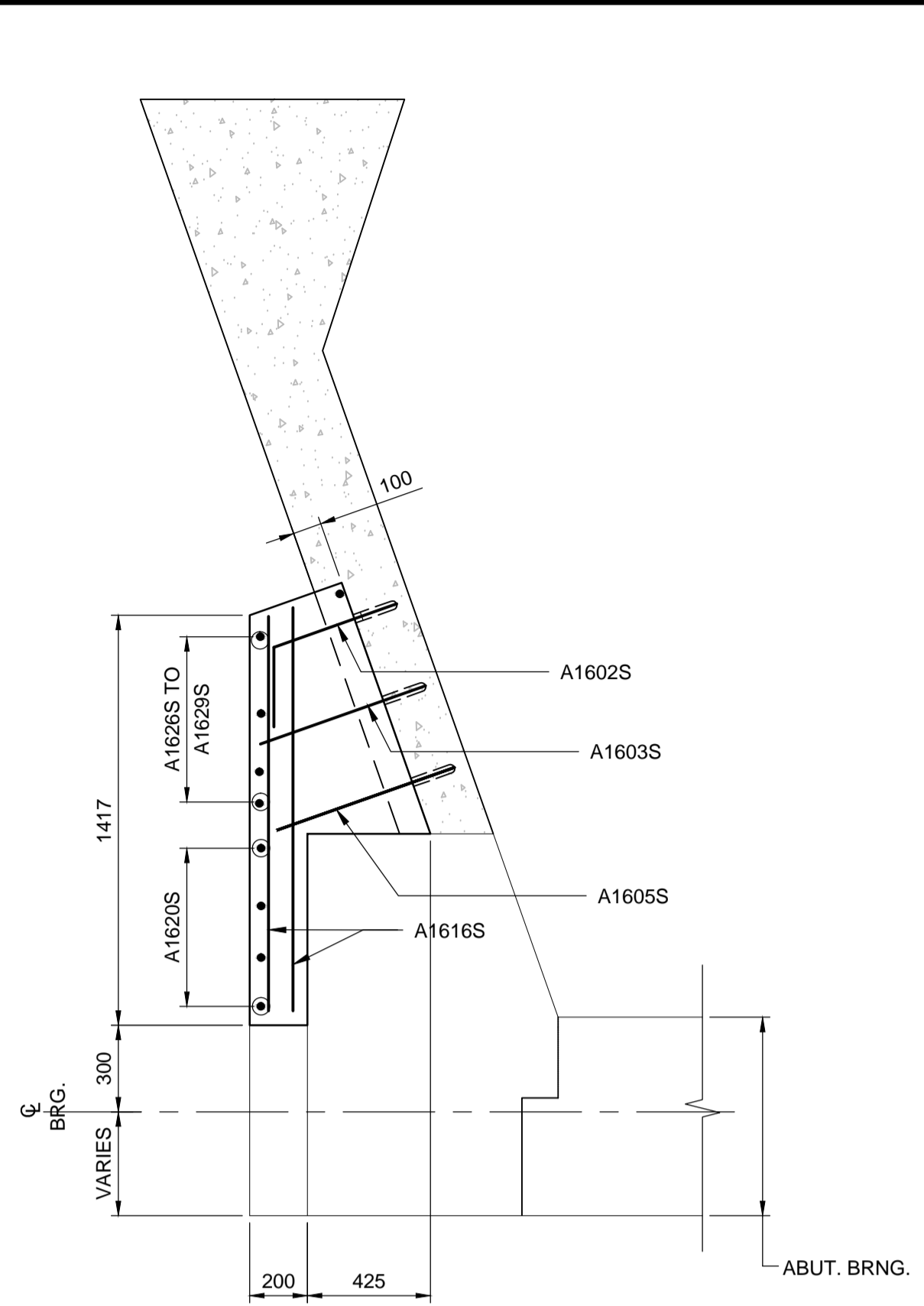
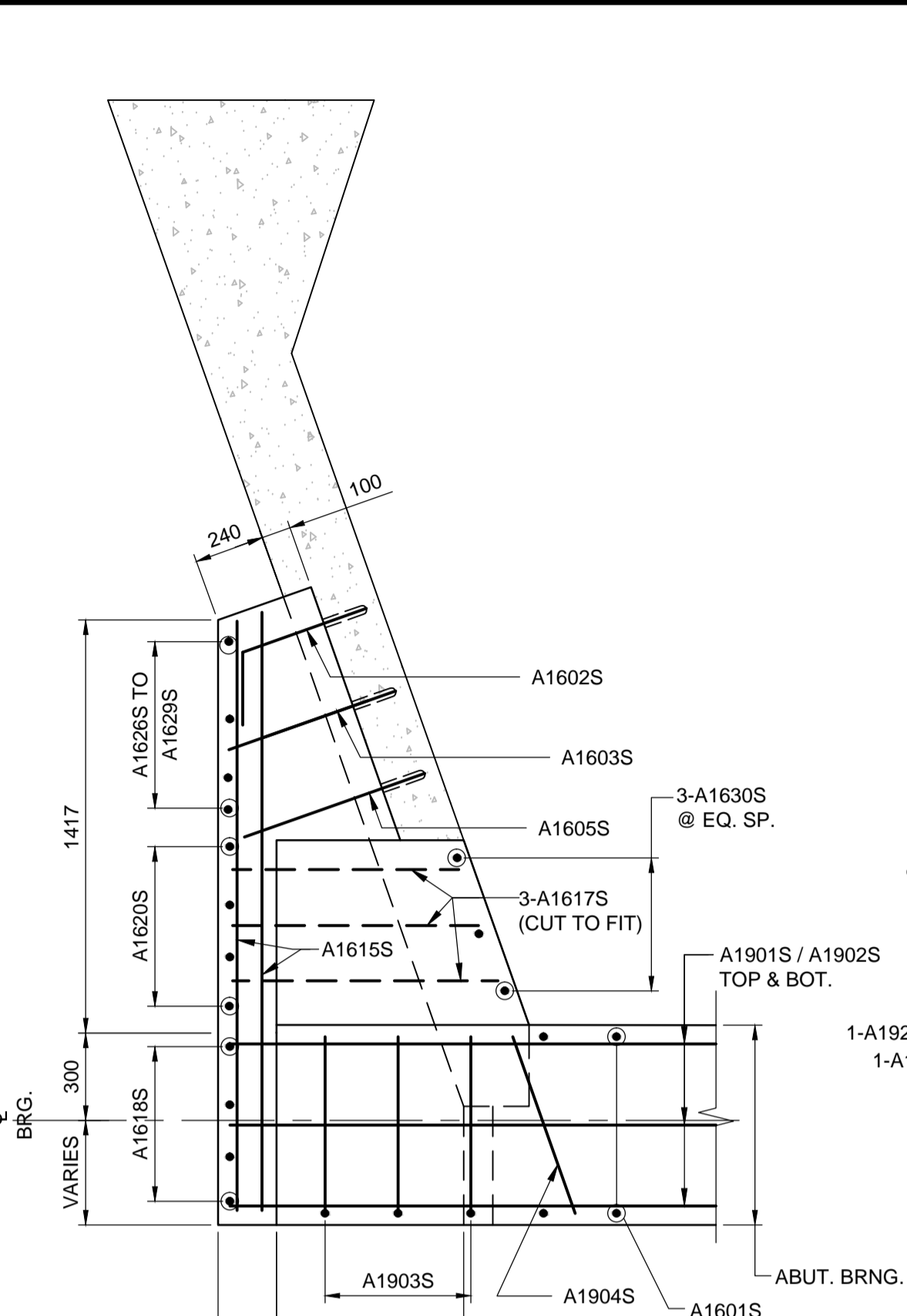


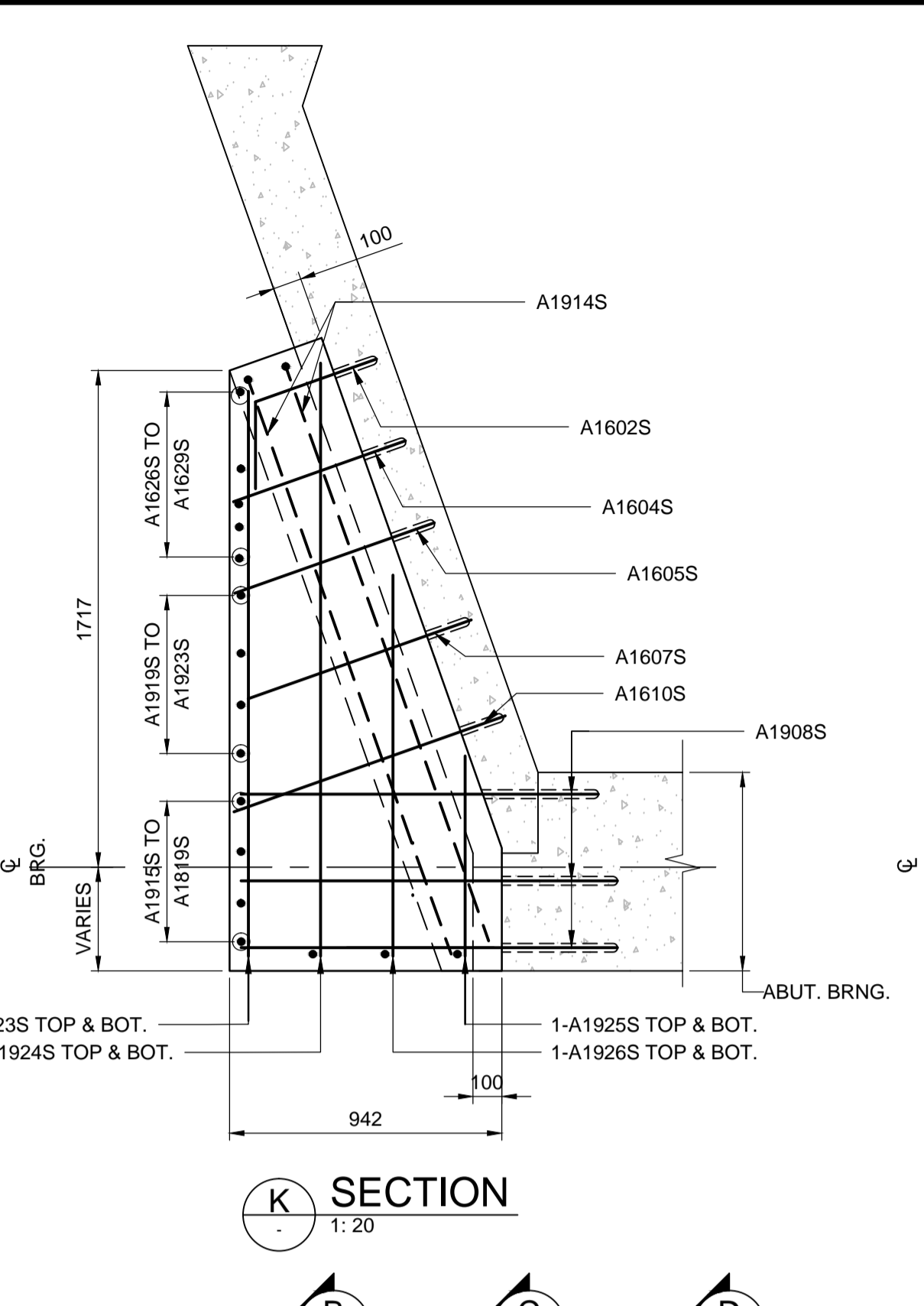
G SECTION
1:20



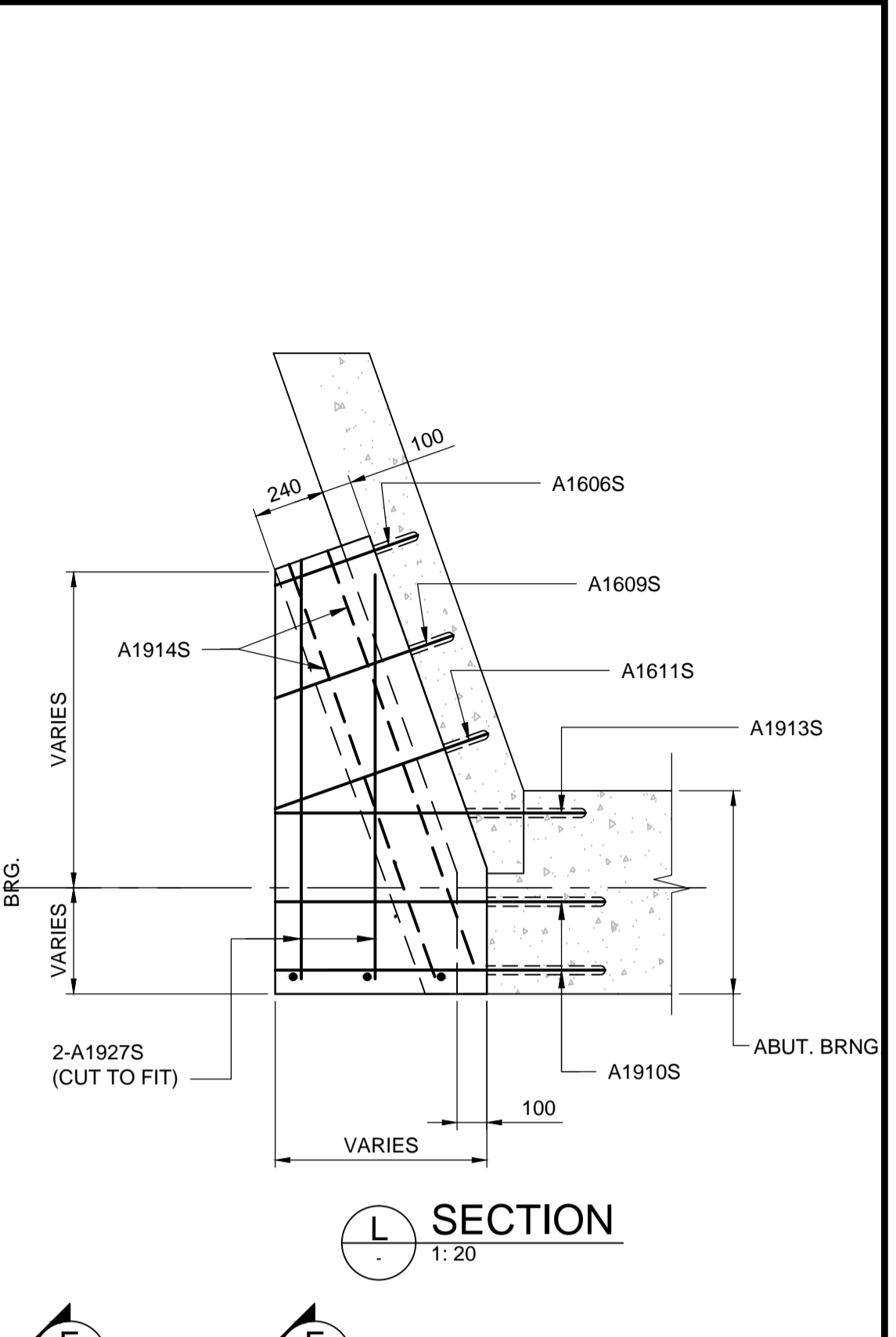
H SECTION
1:20



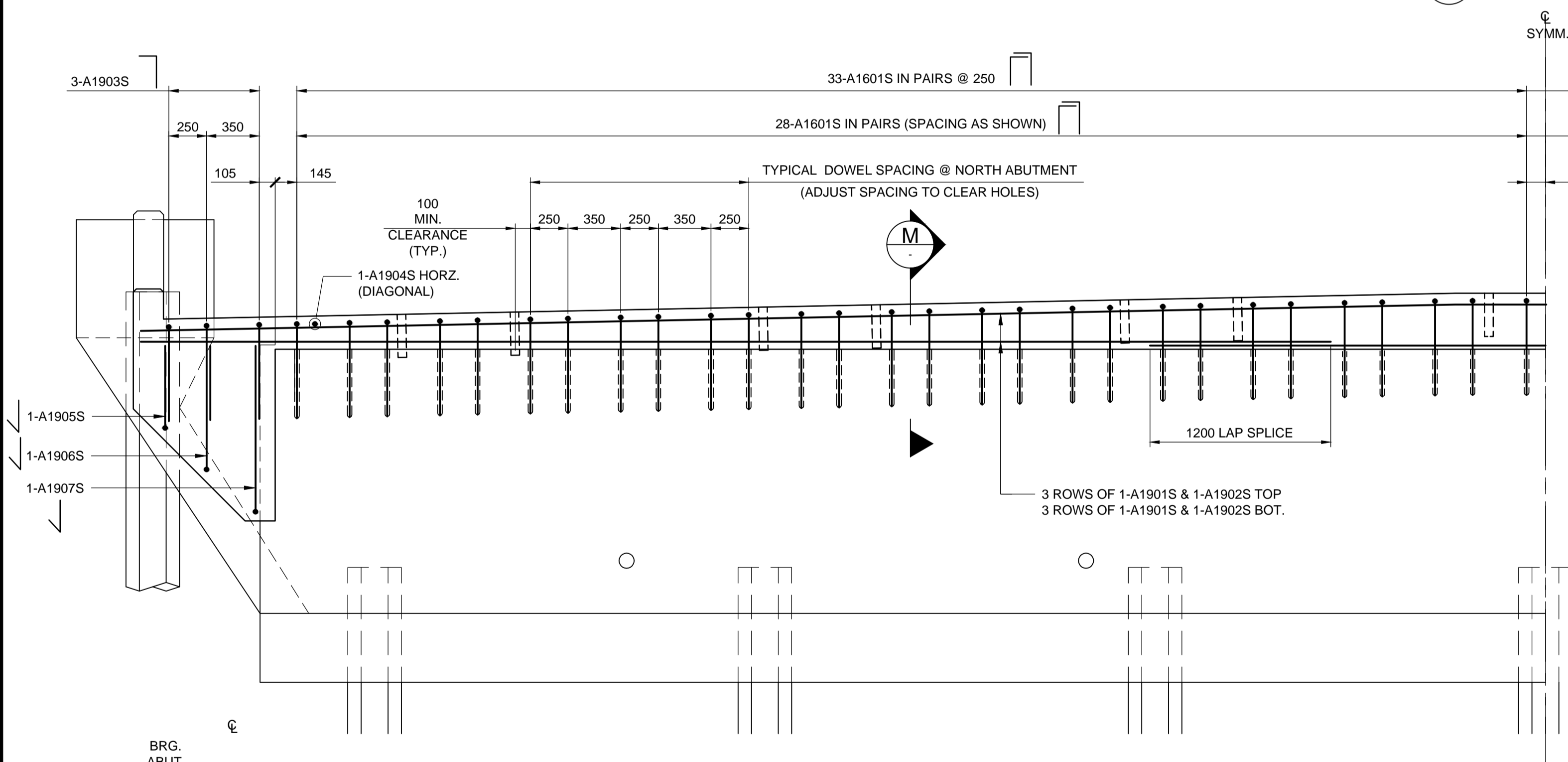
J SECTION
1:20



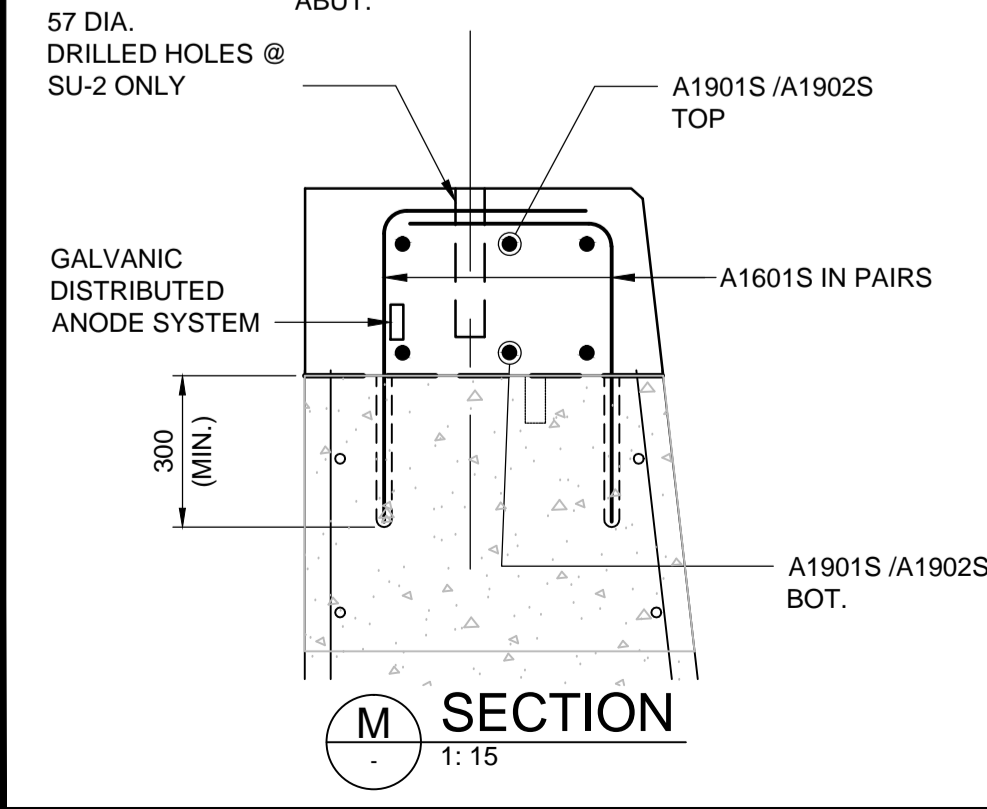
K SECTION
1:20



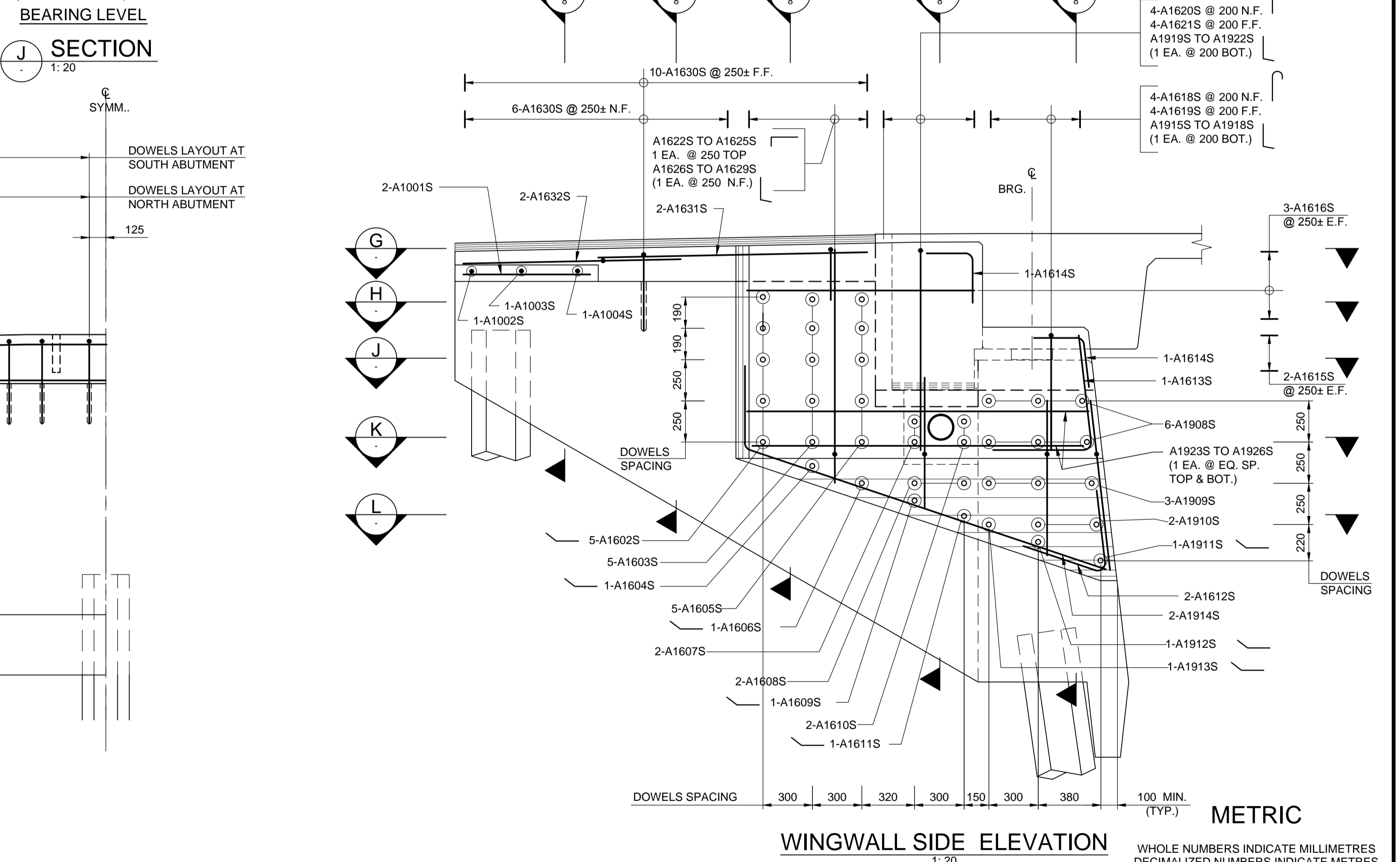
L SECTION
1:20



ABUTMENT FRONT ELEVATION
1:25



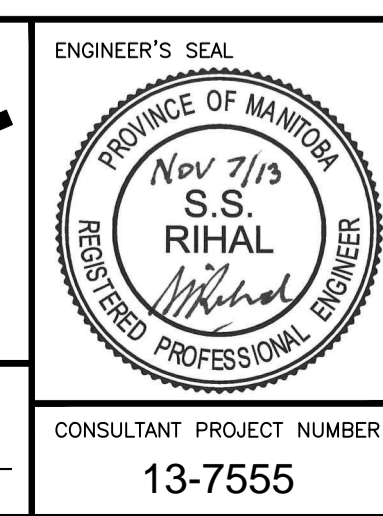
M SECTION
1:15



WINGWALL SIDE ELEVATION
1:20



B.M. ELEV.	DESIGNED BY	SSR
	DRAWN BY	NBG
	CHECKED BY	CDW
	APPROVED BY	MBL
	HOR. SCALE	AS SHOWN
	VERTICAL SCALE	AS SHOWN
0 ISSUED FOR TENDER	13/11/07	SSR
NO. REVISIONS	DATE	BY
	13/11/07	



THE CITY OF WINNIPEG
PUBLIC WORKS DEPARTMENT

RECONSTRUCTION OF THE ST. JAMES STREET BRIDGE OVER OMAND'S CREEK

ABUTMENT MODIFICATIONS 3 OF 3

CITY DRAWING NUMBER: B126-13-09
SHEET 9 OF 26
CONSULTANT DRAWING NUMBER

CONSULTANT PROJECT NUMBER: 13-7555

G:\CAD\137555\09-Structural\01-Abutment\01-CON.dwg