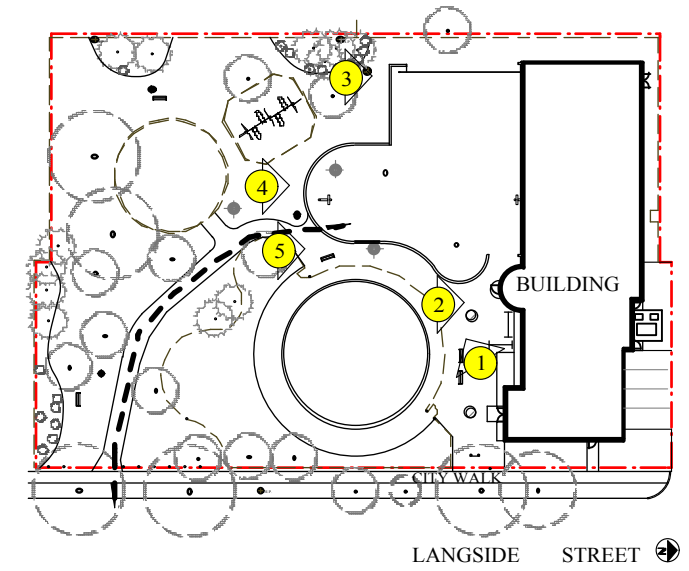




PHOTO "1": EXISTING CONCRETE TREE GRATE TO BE REMOVED AND FILLED IN WITH NEW CONCRETE PAVING



PHOTO "2": EXISTING CONCRETE PAD TO REMAIN.



1 PHOTO REFERENCE LOCATION
L5 Scale: 1:1000



PHOTO "3": EXISTING CONCRETE CURB AND POST FOOTINGS TO BE REMOVED. POST FOOTINGS USE TO SUPPORT LOW CHAIN LINK FENCE. PULL CONCRETE FOOTING OUT OF THE GROUND AND FILL HOLE WITH COMPACTED SAND.



PHOTO "4": EXISTING ASPHALT PAVING AND CONCRETE CURBS TO BE REMOVED. BASKETBALL POST AND FOOTING TO BE REMOVED.



PHOTO "5": EXISTING BENCH TO BE REMOVED BY CUTTING METAL POST FLUSH WITH CONCRETE FOOTING, GRIND REMAINING METAL FOOTING LEVEL WITH CONCRETE FOOTING, AND FILL OLD METAL TUBE WITH MASONRY MORTAR.

| | | | | | | |
|---|--|-----------------------------|-----------|-----------------------|------|------------------------|
| PROJECT TITLE MAGNUS ELIASON RECREATION CENTRE BASKETBALL COURT IMPROVEMENT | DRAWING TITLE EXISTING SITE PHOTOS | NO. | REVISIONS | BY | DATE | |
| | | DRAWN BY K. RECH | | SCALE NTS | | SHEET NO. L5 |
| | | PRINT DATE Dec. 10, 2013 | | DATE Dec. 10, 2013 | | |
| | | FILE NO. 13-08 | | REVISION 0 | | |
| KEN RECH LANDSCAPE ARCHITECTS INC. 1480 Wellington Crescent Winnipeg Manitoba Email: kenrech@mymts.net R3N 0B3 Tel(204) 489-6616 | | | | | | |