

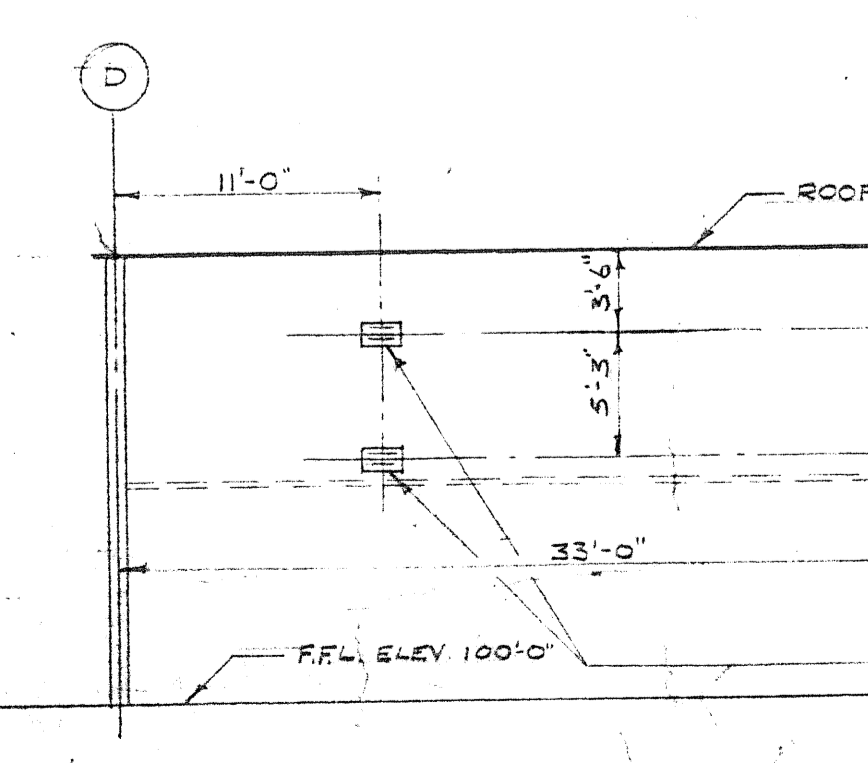
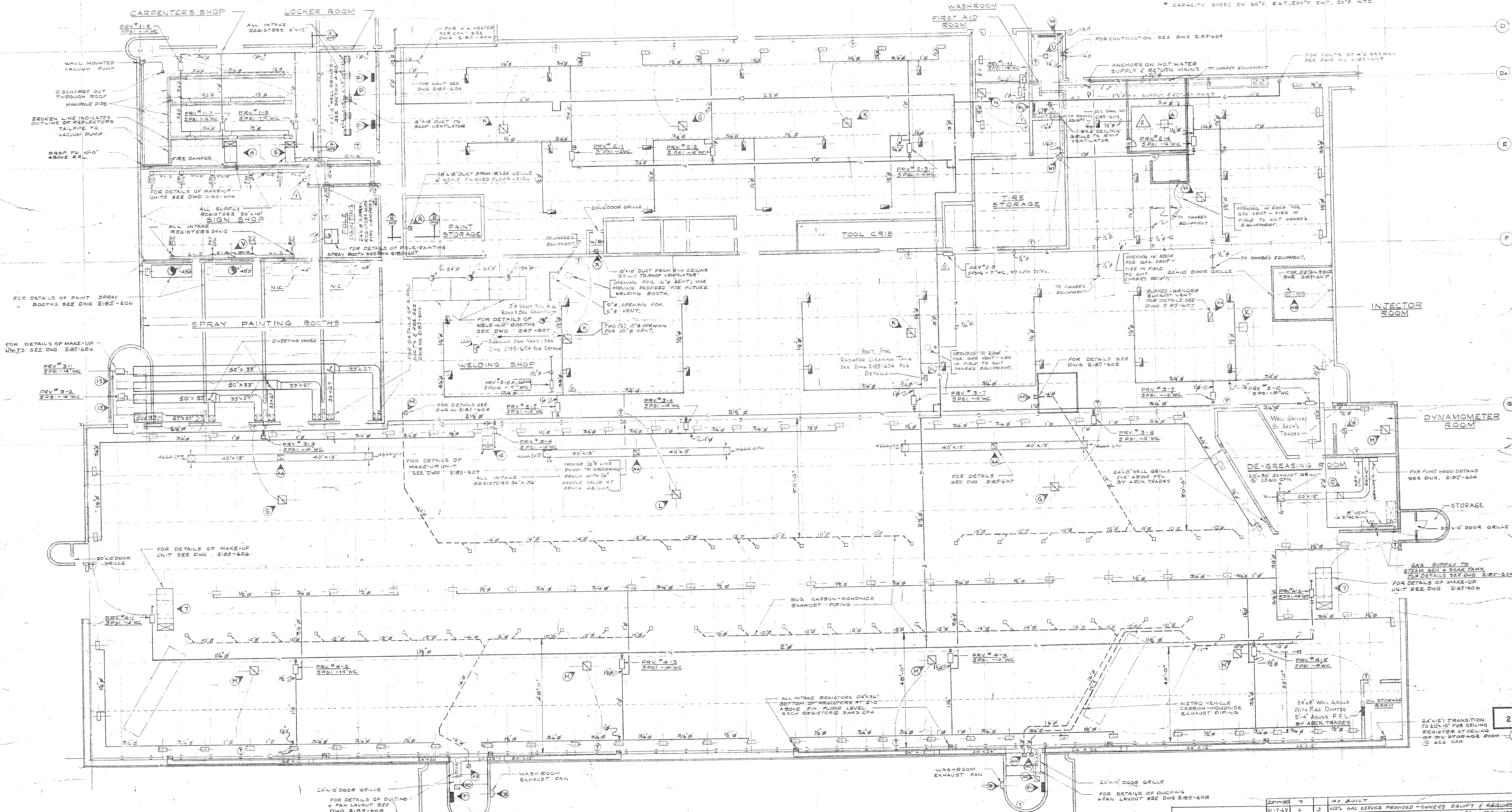
1 2 3 4 5 6 7 8 9 10 11 12 13 14 15 16 17 18 19 20 21 22 23

NOTE: ALL MECHANICAL EQUIPMENT & MOTORS IN CARPENTERS SHOP MUST BE DUST TIGHT

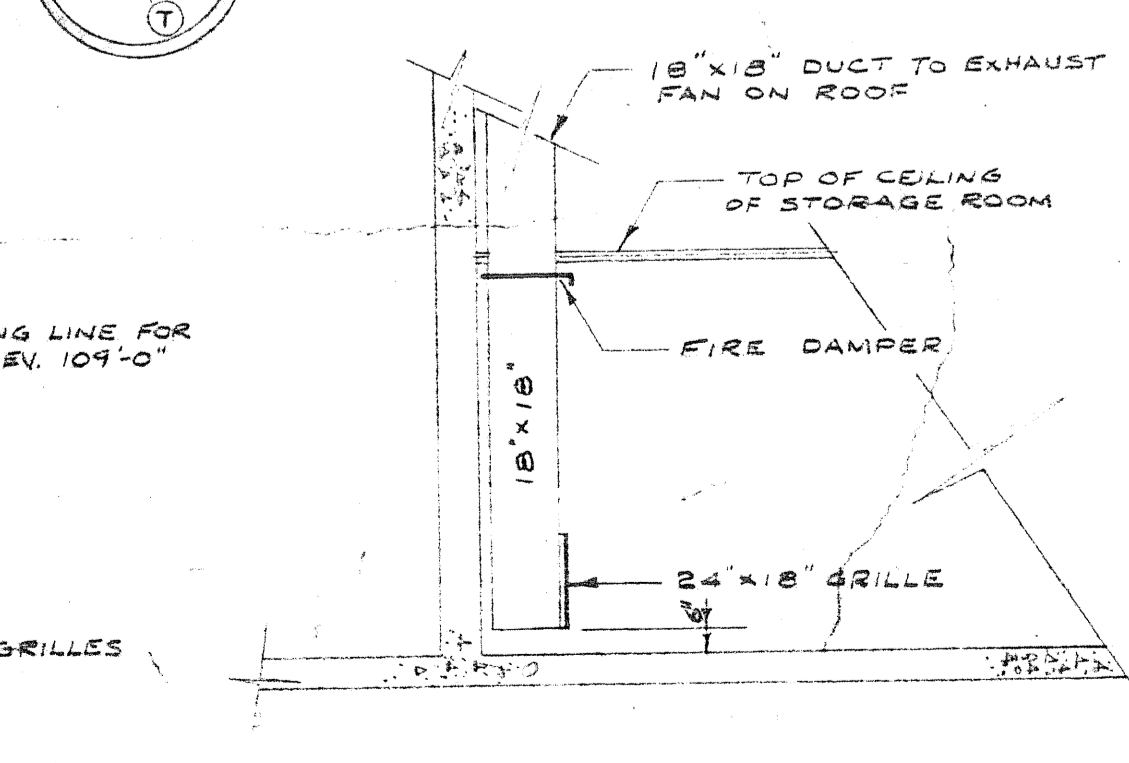
FOR CONTINUATION SEE DWG 2185-604

HOT WATER HEATER SCHEDULE						
SYMBOL	MANUFACTURER MODEL NO.	CAPACITY BTU/HK	CFM	FAN HP	U.S. GPM	REMARKS
W1	SIZE 250	42,600	500	1/8	6.0	FORCED FLOW UNIT
W2	FRS 125	37,500	400	0-4	0-4	WALL CONVECTOR
W3	76 H	28,500	648	1/30	2.61	WALL CONVECTOR MOUNTED ABOVE F.F.L.

* CAPACITY BASED ON 60°F. EAT, 200°F. EWT, 20°F. WTD.



SECTION A-A
SCALE 1/8" = 1'-0"



SECTION B-B
NOT TO SCALE

OVERHAUL & REPAIR BUILDING
PLAN
1/8" = 1'-0"

- LEGEND
- ☐ INFRA-RED HEATER INSTALLED WITH REFLECTOR ASSEMBLY
 - ☐ INFRA-RED HEATER INSTALLED WITHOUT REFLECTOR ASSEMBLY
 - ☐ BURNER ASSEMBLY FOR CO-RAY-VAC HEATING SYSTEM
 - ☐ THERMOSTAT
 - ☐ ELECTRIC HEATER UNIT

- NOTE:
1. ALL INFRA-RED UNITS LOCATED AT OUTSIDE WALLS TO BE ANGLE MOUNTED AS SHOWN ON DWG 2185-603
 2. FOR DETAILS OF VENT LANCES & CURBS SEE DWG 2185-603
 3. FOR HEATING & VENTILATING SCHEDULES SEE DWG 2185-601

NO.	DATE	BY	DESCRIPTION	SCALE
1	11/2/57	J.T.T.	ISSUE FOR APPROVAL	AS SHOWN
2	11/15/57	J.T.T.	FOR APPROVAL	AS SHOWN
3	12/1/57	J.T.T.	FOR APPROVAL	AS SHOWN
4	12/1/57	J.T.T.	FOR APPROVAL	AS SHOWN
5	12/1/57	J.T.T.	FOR APPROVAL	AS SHOWN
6	12/1/57	J.T.T.	FOR APPROVAL	AS SHOWN
7	12/1/57	J.T.T.	FOR APPROVAL	AS SHOWN

ISSUE OR REVISION

METROPOLITAN CORPORATION OF GREATER WINNIPEG
STREETS AND TRANSIT DIVISION

TRANSIT STORAGE AND SHOP FACILITIES
OVERHAUL & REPAIR SHOP
HEATING & VENTILATING - PLAN & DETAILS

CONSULTING PROFESSIONAL ENGINEERS
A. D. MARGISON AND ASSOCIATES LIMITED
155 LESLIE STREET, DON MILLS, ONTARIO

ARCHITECTS
Walsman Ross & Blankstein Corp. Gillmer Hanna
10 DONALD STREET, WINNIPEG, MANITOBA

APPROVED: *[Signature]*
DATE: AUGUST '57

DRAWN BY: *[Signature]*
SCALE: AS SHOWN

2185-603
MECHANICAL