



THE CITY OF WINNIPEG

**PUBLIC WORKS DEPARTMENT
TRANSPORTATION ENGINEERING DIVISION**

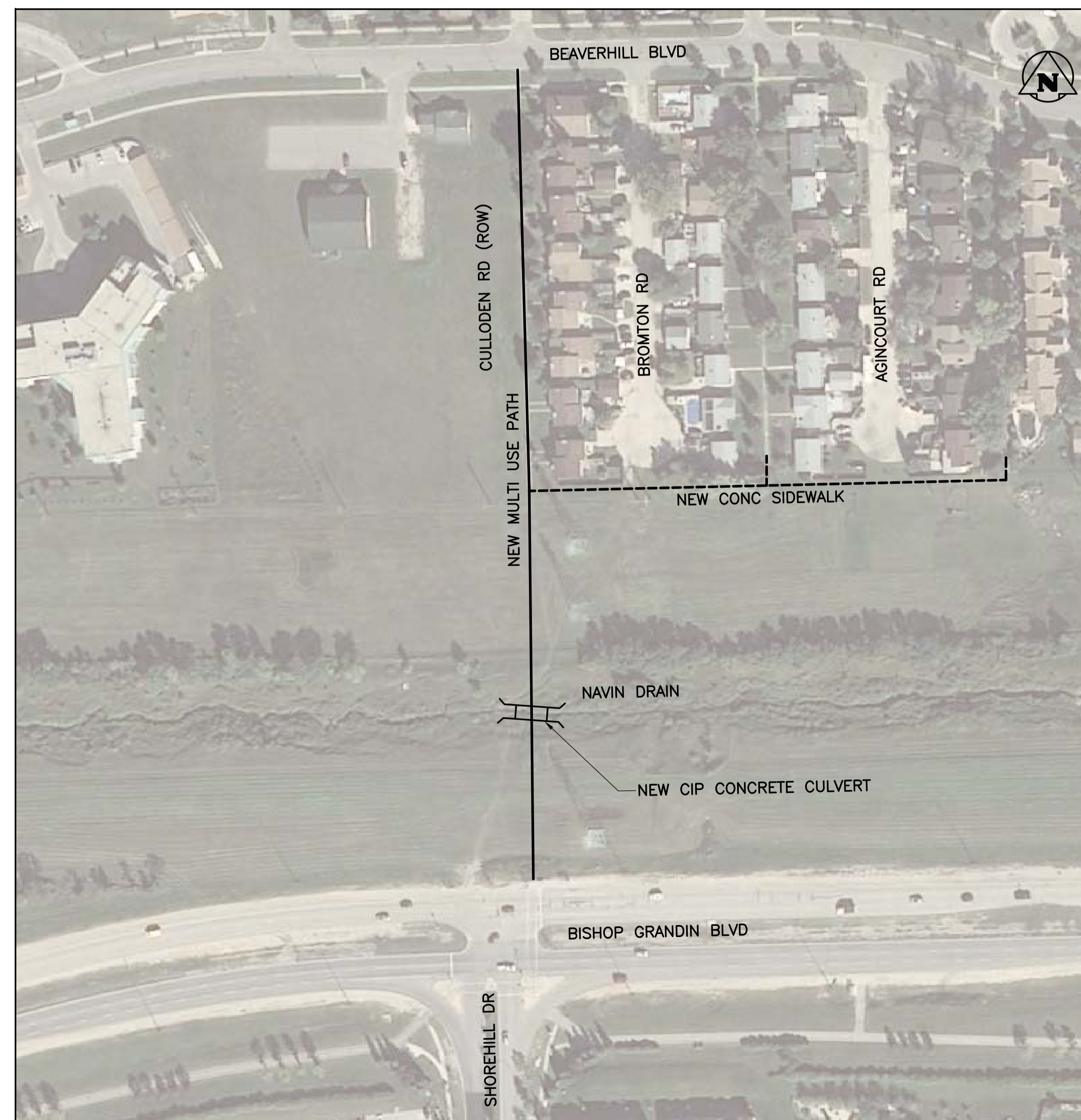


BID OPPORTUNITY NO. 79-2013

BISHOP GRANDIN BLVD/SHOREHILL DR TO BEAVERHILL BLVD: MULTI-USE PATH AND NAVIN DRAIN C.I.P CONCRETE CULVERT

SHEET INDEX

DRAWING NO.	TITLE
-	COVER SHEET
C-01	BISHOP GRANDIN BLVD/SHOREHILL DR TO BEAVERHILL BLVD PLAN AND PROFILE
C-02	BISHOP GRANDIN BLVD/SHOREHILL DR TO BEAVERHILL BLVD MISCELLANEOUS DETAILS
C380-12-01	BISHOP GRANDIN BLVD/SHOREHILL DR TO BEAVERHILL BLVD BOX CULVERT PLAN
C380-12-02	BISHOP GRANDIN BLVD/SHOREHILL DR TO BEAVERHILL BLVD BOX CULVERT ELEVATION AND DATE DETAIL
C380-12-03	BISHOP GRANDIN BLVD/SHOREHILL DR TO BEAVERHILL BLVD BOX CULVERT SECTION
C380-12-04	BISHOP GRANDIN BLVD/SHOREHILL DR TO BEAVERHILL BLVD BOX CULVERT AND CHAIN LINK FENCE PLAN
C380-12-05	BISHOP GRANDIN BLVD/SHOREHILL DR TO BEAVERHILL BLVD BOX CULVERT SECTIONS AND DETAIL
G-01	BISHOP GRANDIN BLVD/SHOREHILL DR TO BEAVERHILL BLVD BANK STABILIZATION PLAN
G-02	BISHOP GRANDIN BLVD/SHOREHILL DR TO BEAVERHILL BLVD BANK STABILIZATION SECTIONS



LOCATION PLAN

