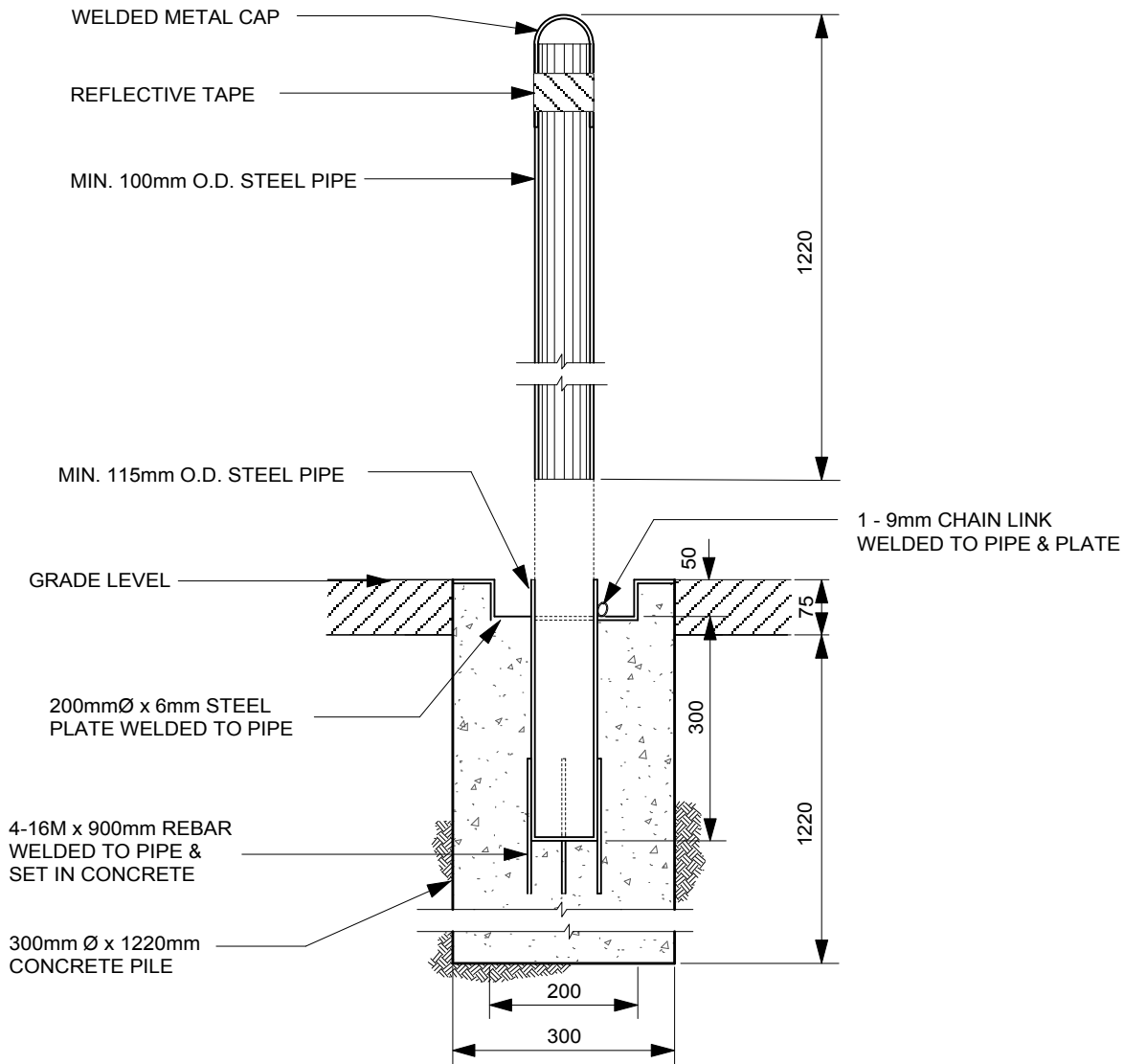


Drawing Title:

REMOVABLE STEEL BOLLARD

Drawing No:

SCD-105C



REMOVABLE STEEL BOLLARD

NOTE :
PRIMED WITH RUSTOLEUM No. 769. PAINT
WITH SAPOLIN BLACK WROUGHT FINISH
ALL DIMENSIONS IN MILLIMETRES

DIMENSIONS SHOWN ARE IN MILLIMETRES UNLESS OTHERWISE SPECIFIED

REVISION: 2
DATE: December 20, 2012
SCALE: N.T.S
DRAWN BY: SP

The City of Winnipeg
Planning, Property and Development Department
Planning and Land Use Division
Unit 15 - 30 Fort Street, Winnipeg, MB, R3C 4X5

