

PARTIAL MAIN FLOOR PLAN - DEMOLITION & RENOVATION
 NORTH
 1 A3.1 SCALE 1:100

LEGEND

--- WALL & MISC. DEMOLITION

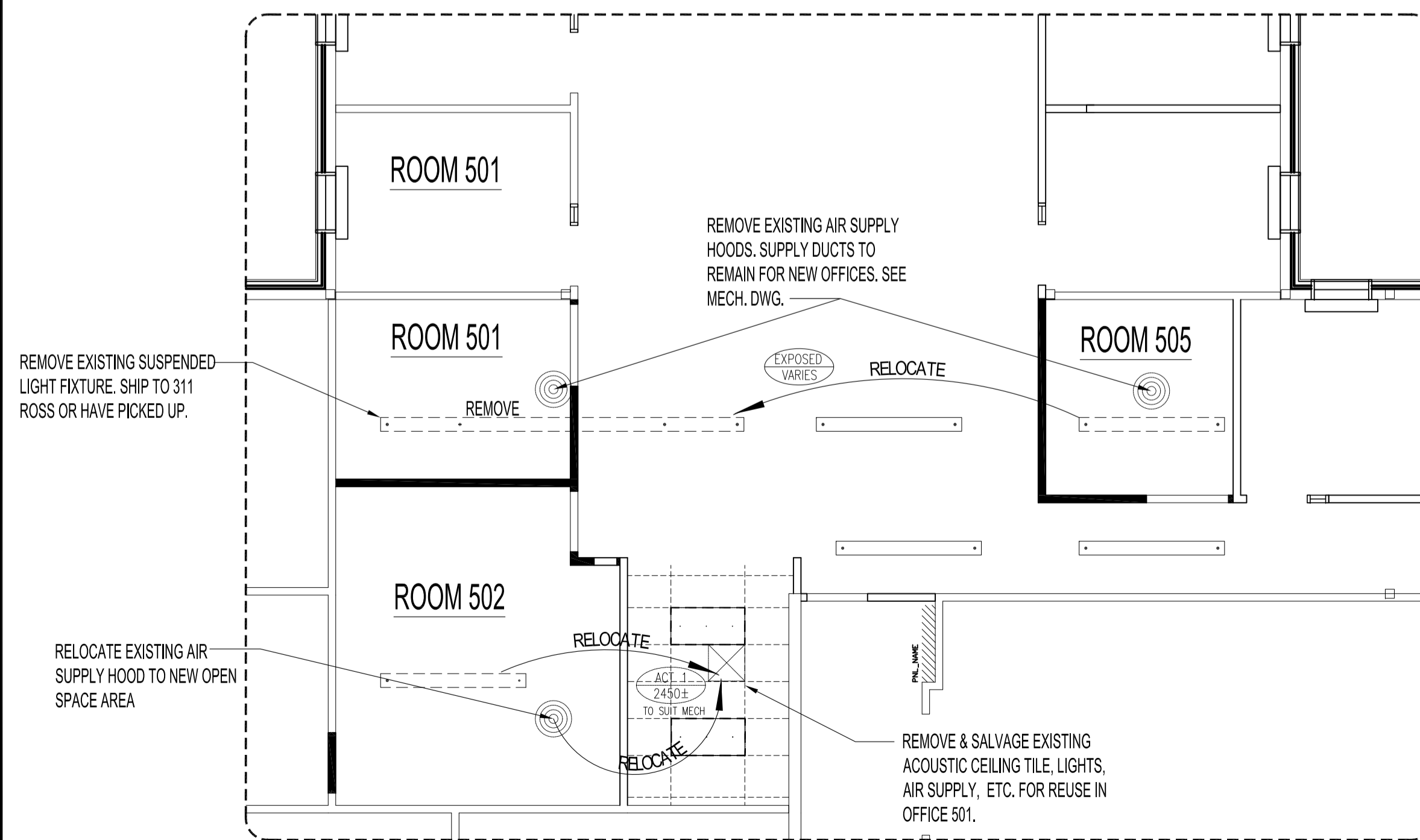
— NEW WALL CONSTRUCTION

TYPE A
 NEW 1/2" GYPSUM BOARD B/S
 NEW 3 5/8" STEEL STUDS @ 16" O.C.
 PARTITIONS TO HEIGHTS SPECIFIED ON RENOVATION DWG
 NOTE: PROVIDE WOOD BLOCKING FOR BATHROOM LAVATORY & ACCESSORIES AS PER MANUFACTURER'S INSTALLATION INSTRUCTIONS

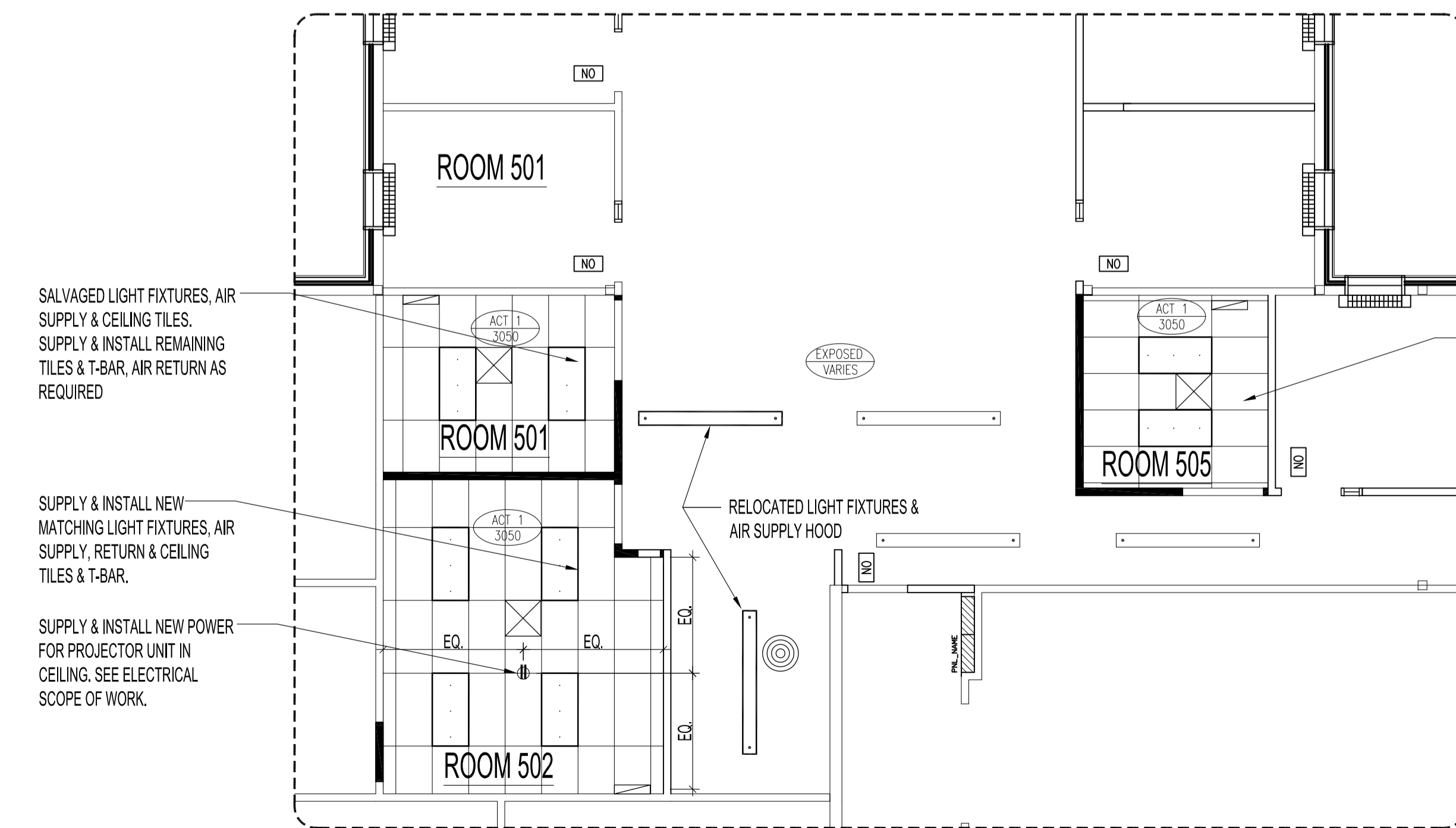
ACOUSTIC CEILING SPECIFICATION

-ARMSTRONG "FINE FISSURED" SQUARE LAY TILE MODEL # 1810
 600mm x 1200mm x 15mm

-GRID SYSTEM TWO DIRECTIONAL EXPOSED TEE BAR GRID. TO BE ARMSTRONG PRELUDE XL, 15/16", EXPOSED TEE GRID SYSTEM.



PARTIAL MAIN FLOOR PLAN - REFLECTED CEILING DEMOLITION
 NORTH
 2 A3.1/A3.1 SCALE N.T.S.



PARTIAL MAIN FLOOR PLAN - REFLECTED CEILING RENOVATION
 NORTH
 3 A3.1/A3.1 SCALE N.T.S.

1
 COPIER, FRIDGE & MICROWAVE TO BE RELOCATED BY CONTRACTOR
 DOOR, HARDWARE, SIDELITE & TRANSOM FOR OFFICE 505 IS SALVAGED FROM OFFICE 196

No.	REVISION/DESCRIPTION	BY	DATE
SEAL			

DRAWN	CHECKED	DESIGNED	APPROVED
MMK			

Winnipeg
 THE CITY OF WINNIPEG
 PLANNING, PROPERTY AND
 DEVELOPMENT DEPARTMENT
 MUNICIPAL ACCOMMODATIONS DIVISION
 3-65 GARRY STREET, R3C 4K4

PROJECT
 WASTE WATER SERVICES
 ALTERATIONS TO WASTE WATER
 OFFICE AREAS
 1199 PACIFIC AVENUE

SHEET TITLE
 PARTIAL MAIN FLOOR PLAN
 DEMOLITION & RENOVATIONS
 FOR WASTE WATER SERVICES

SCALE	PROJECT No:	SHEET No:
AS SHOWN	2013-101	A3.1R1