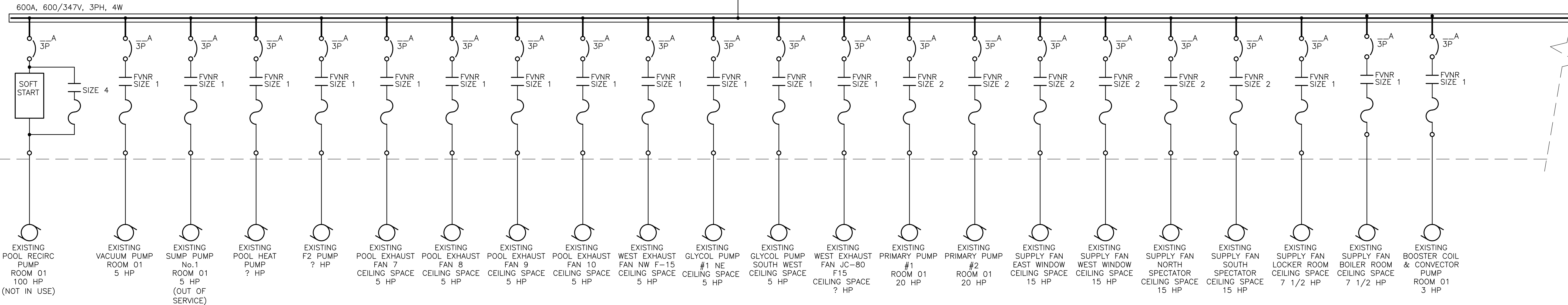


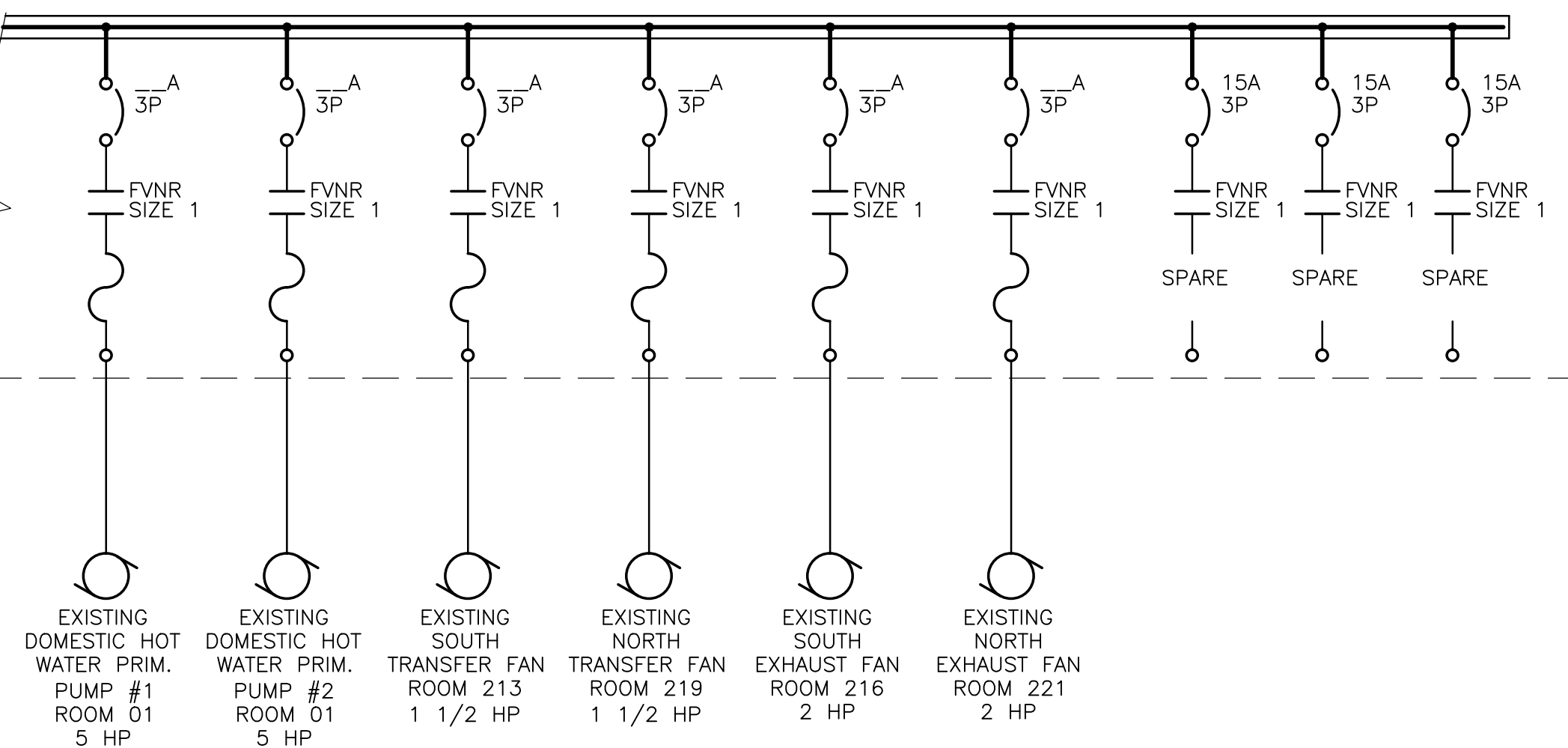
MCC1



NEW MCC1 REFER TO DRAWING E11

continued below

MCC1 con't



NOTES

- ALL PUMPS, FANS AND ELECTRICAL LOADS ARE EXISTING UNLESS NOTED OTHERWISE.
- ALL STARTERS TO HAVE 600V-120V CONTROL TRANSFORMER IN EACH UNIT.
- WIRE AND CONNECT EXISTING CONTROL SIGNALS TO NEW MOTOR CONTROLS.
- MOTOR STARTERS SHALL INCLUDE CT FOR CONNECTION TO METASYS MONITORING SYSTEM.

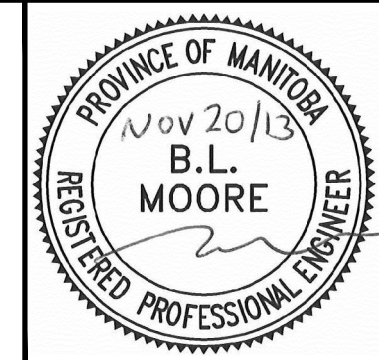
MCC LEGEND

- HOA HAND-OFF-AUTO SELECTOR SWITCH IN DOOR
- IND LT RED INDICATING LIGHT IN DOOR
- SS PB START STOP PUSHBUTTON IN DOOR
- INTLK INTERLOCKED WITH MCC UNIT
- CCP CONNECTION TO CENTRAL CONTROL PANEL

	F1	F2	F3	F4	F5	F6	F7	R1
	600-MCC-1							
A	POOL RECIRC PUMP	VACUUM PUMP	POOL EXHAUST FAN 9	PRIMARY PUMP #1	SUPPLY FAN WEST WINDOW	DOMESTIC HOT WATER PRIM. PUMP #1	SPACE	SUMP PUMP P-1
B	IND LT SS PB	IND LT SS PB	HOA IND LT INTLK F5B	IND LT SS PB	HOA IND LT INTLK F2F CCP	SS PB IND LT	SPACE	HOA IND LT
C	SUMP PUMP No.1	HOA IND LT	POOL EXHAUST FAN 10	IND LT SS PB	SUPPLY FAN NORTH SPECTATOR	DOMESTIC HOT WATER PRIM. PUMP #2	SPACE	SUMP PUMP P-2
D	POOL HEAT PUMP	IND LT SS PB	HOA IND LT INTLK F5C	SPARE SIZE 1	HOA IND LT INTLK F3A CCP	HOA SS PB IND LT	SPACE	HOA IND LT
E	IND LT SS PB	F2 PUMP	WEST EXHAUST FAN NW F-15	SPARE SIZE 1	SUPPLY FAN SOUTH SPECTATOR	SOUTH TRANSFER FAN	SPACE	CONTROLS COMPRESSOR C-1
F	SS PB	IND LT SS PB	HOA IND LT INTLK ??	SPARE SIZE 1	HOA IND LT INTLK F3B CCP	HOA IND LT INTLK F5D	SPACE	HOA IND LT
	HOA IND LT	POOL EXHAUST FAN 7	GLYCOL PUMP #1 NE	SPARE SIZE 1	SUPPLY FAN LOCKER ROOM	NORTH TRANSFER FAN	SPACE	ELECTRIC BOILER CIRCULATING PUMP
	BLANK	HOA IND LT INTLK F4F	IND LT SS PB	SPARE SIZE 1	HOA IND LT CCP	HOA IND LT INTLK F5D	SPACE	HOA IND LT
		POOL EXHAUST FAN 8	WEST EXHAUST FAN JC-80 F15	SUPPLY FAN EAST WINDOW	HOA IND LT CCP	NORTH EXHAUST FAN	SPACE	SPACE
		HOA IND LT INTLK F5A	IND LT SS PB	HOA IND LT INTLK F2E CCP	BOOSTER COIL & CONVECTOR PUMP	SOUTH EXHAUST FAN	SPACE	SPACE
				IND LT SS PB	IND LT SS PB	HOA IND LT INTLK F5D		

Conditions of Use
Verify elevations and/or dimensions on drawing prior to use. Report any discrepancies to Dillon Consulting Limited.

Do not scale dimensions from drawing.
Do not modify drawing, re-use it, or use it for purposes other than those intended at the time of its preparation without prior written permission from Dillon Consulting Limited.



DESIGN	REVIEWED BY
DRAWN	CHECKED BY
DATE	FEB. 12, 2013
SCALE	N.T.S.
ISSUED FOR BID OPPORTUNITY NUMBER 859-2013	13-11-20
ISSUED FOR	DATE

PAN AM POOL ELECTRICAL UPGRADE

PROJECT NO. 137300

ELECTRICAL MOTOR CONTROL CENTRE No.1

SHEET NO.

E414

DILLON CONSULTING LIMITED 485 RICHMOND STREET, LONDON, ONTARIO, CANADA N6A 5A9. PHONE (519) 438-6192. FAX (519) 672-8209

File Name: g:\cad\137300\contractor\electrical\mcc1.dwg