

43.50 OF 450 CLAY CS  
TO BE LINED S-MA20014923  
(PARTIALLY DETERIORATED)

ST MARY AVENUE

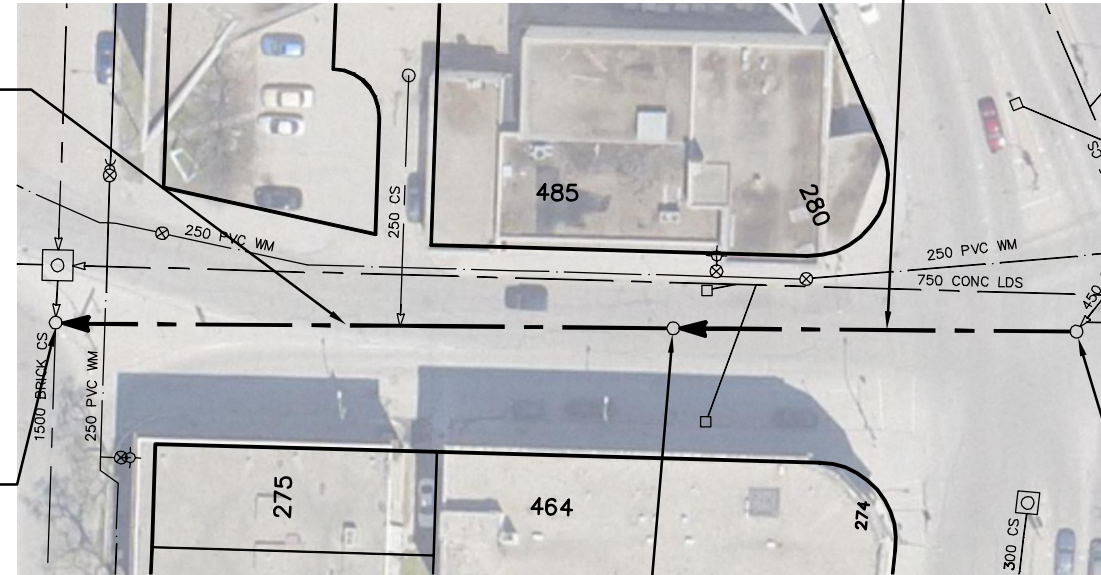


57.90 OF 450 CLAY CS  
TO BE LINED S-MA20014896  
(FULLY DETERIORATED)

COLONY ST

OSBORNE ST N

S-MH20013437  
RIM 231.89  
INV N 225.61  
INV E 226.07  
INV S 225.61



S-MH20013475  
RIM 231.55  
INV E 226.39  
INV W 226.39

S-MH20013470  
RIM 231.86  
INV N 226.64  
INV W 226.64

SEWER JUNCTION INFORMATION FROM SEWER VIDEO INSPECTION		
SEWER ID S-MA20014896		
DISTANCE FROM MH ID S-MH20013475		
DISTANCE	DIAMETER	CLOCK
4.9	150	2
11.8	150	2
12.8	150	10
21.7	150	11
22.3	150	2
23.9	250	11
25.2	150	12

SEWER JUNCTION INFORMATION FROM SEWER VIDEO INSPECTION		
SEWER ID S-MA20014923		
DISTANCE FROM MH ID S-MH20013470		
DISTANCE	DIAMETER	CLOCK
7.2	150	1

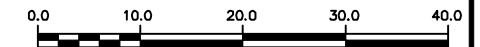
**WARNING**

IF POWER EQUIPMENT OR EXPLOSIVES  
ARE TO BE USED FOR EXCAVATION ON  
THIS PROJECT THE CONTRACTOR MUST:

- 1) NOTIFY THE GAS COMPANY OF THE PROPOSED LOCATION OF EXCAVATION.
- 2) TAKE PRECAUTION TO AVOID DAMAGE TO GAS COMPANY INSTALLATIONS.

SEE PROVINCIAL REGULATION 210/72 FOR DETAILS

**METRIC**  
WHOLE NUMBERS INDICATE MILLIMETRES  
DECIMALIZED NUMBERS INDICATE METRES



LOCATION APPROVED  
UNDERGROUND STRUCTURES

SUPV. U/G STRUCTURES COMMITTEE DATE

NOTE:

LOCATION OF UNDERGROUND STRUCTURES AS SHOWN ARE BASED ON THE BEST INFORMATION AVAILABLE BUT NO GUARANTEE IS GIVEN THAT ALL EXISTING UTILITIES ARE SHOWN OR THAT THE GIVEN LOCATIONS ARE EXACT. CONFIRMATION OF EXISTENCE AND EXACT LOCATION OF ALL SERVICES MUST BE OBTAINED FROM THE INDIVIDUAL UTILITIES BEFORE PROCEEDING WITH CONSTRUCTION.

B.M. ELEV.			
CONSTRUCTION COMPLETION DATE: YYYY MM DD			
NO.	REVISIONS	DATE	BY

DESIGNED BY	SC	CHECKED BY	SC
DRAWN BY	MA	APPROVED BY	KZ
SCALE:	1:750	RELEASED FOR CONSTRUCTION	
HORIZONTAL			
VERTICAL			
DATE	2013 10 24	DATE	
PLOT DATE:	2013 10 24		

ENGINEER'S SEAL

**ORIGINAL  
SIGNED BY  
S.R.J.  
COURNOYER  
13-10-24**

CONSULTANT DRAWING NUMBER



**THE CITY OF WINNIPEG**  
WATER AND WASTE DEPARTMENT  
ENGINEERING DIVISION

2013 SEWER RENEWALS  
BY CIPP LINING  
**ST MARY AVENUE**  
MH AT OSBORNE STREET (N) TO  
MH AT COLONY STREET

SHEET **35** OF **46**  
CITY DRAWING NUMBER

10604