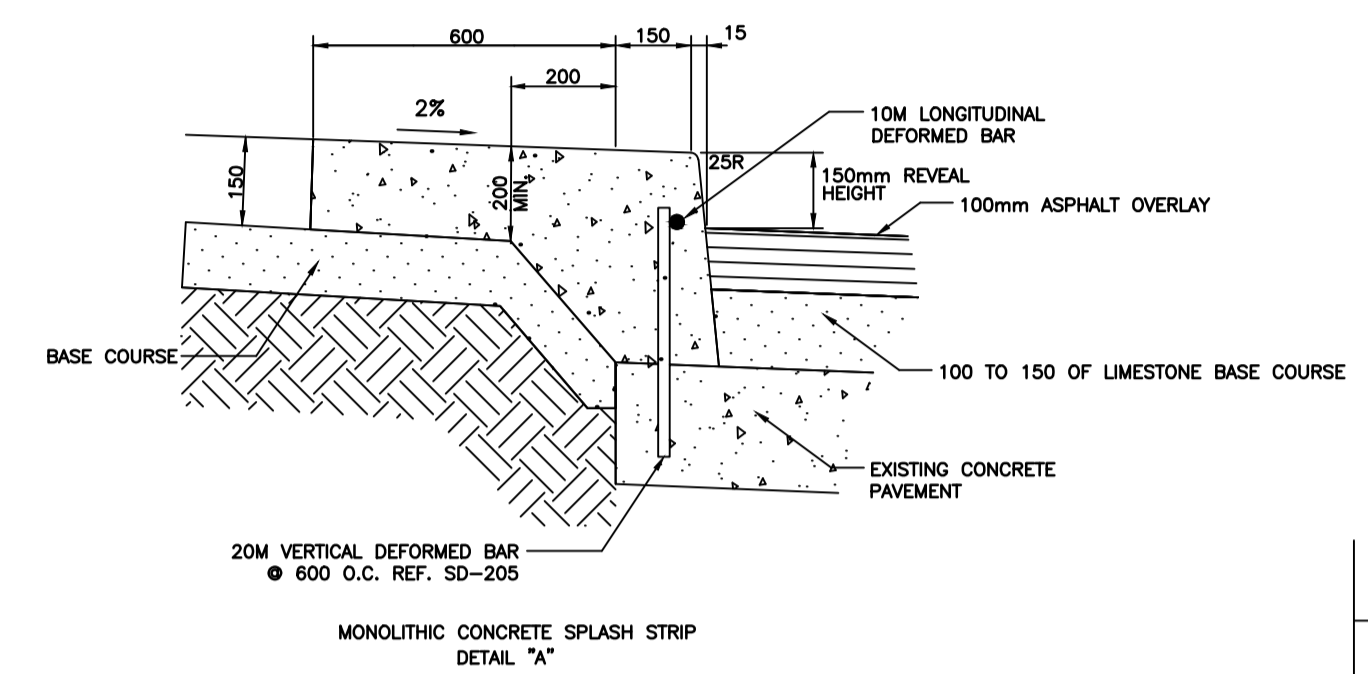
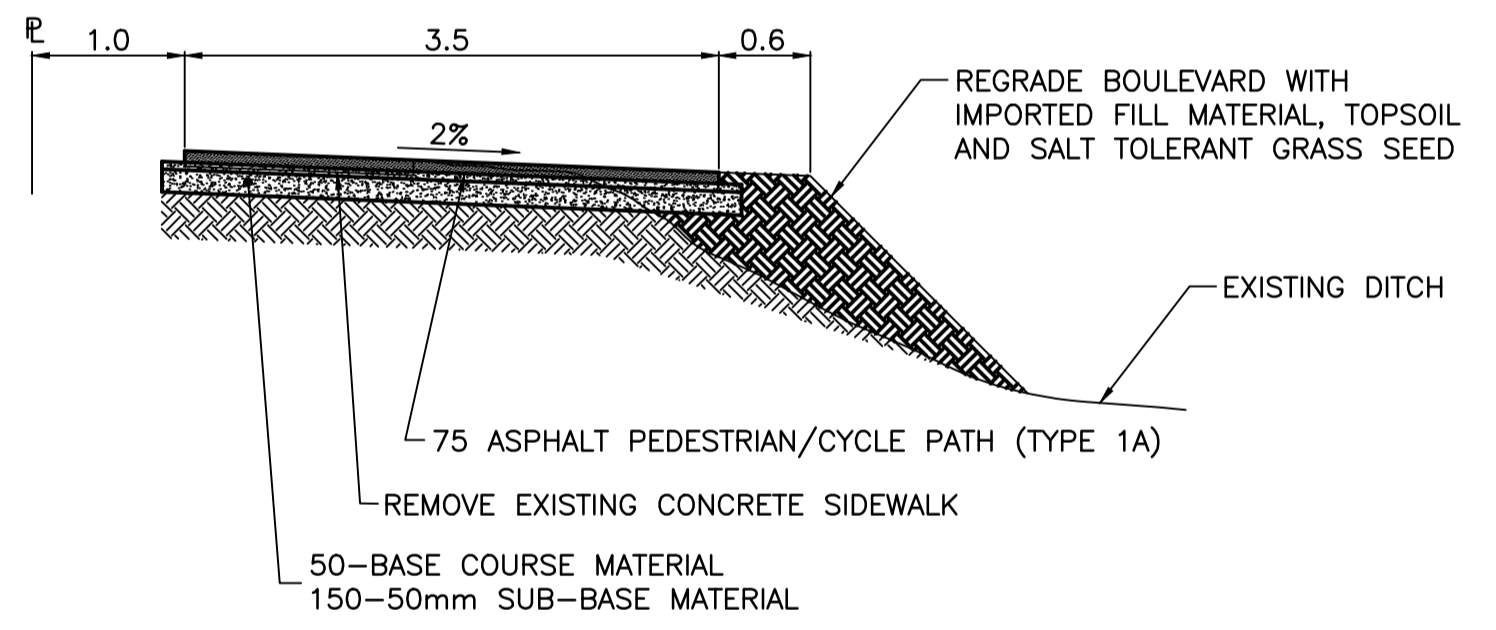


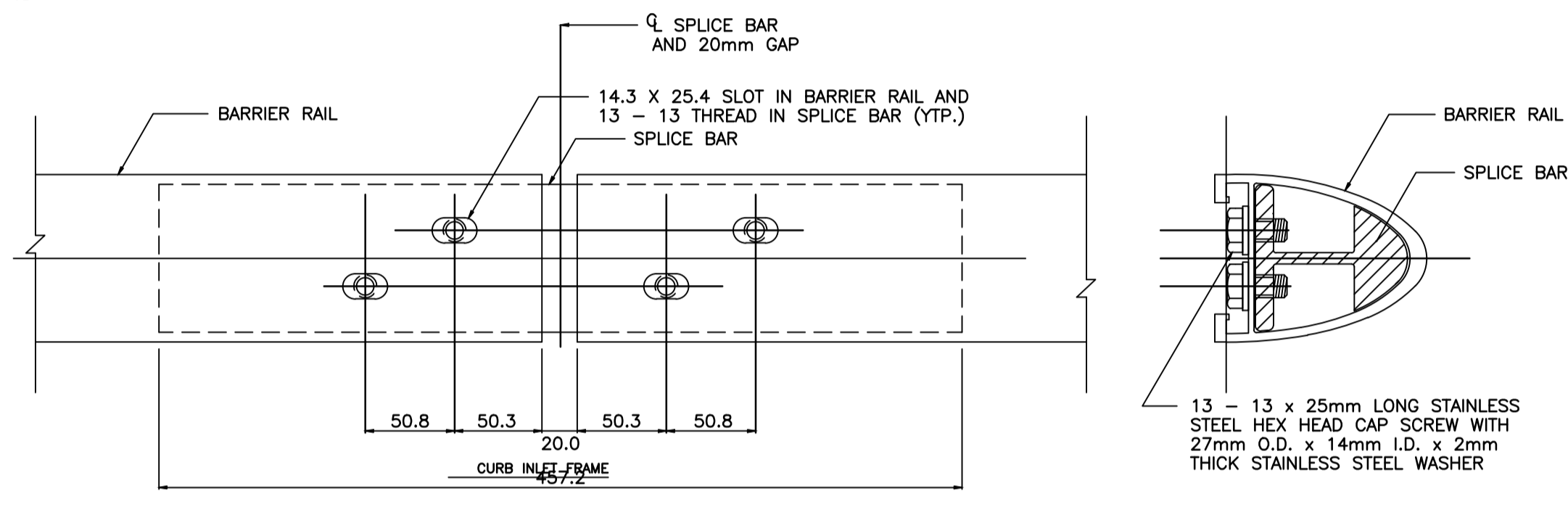
SECTION A - A
N.T.S.



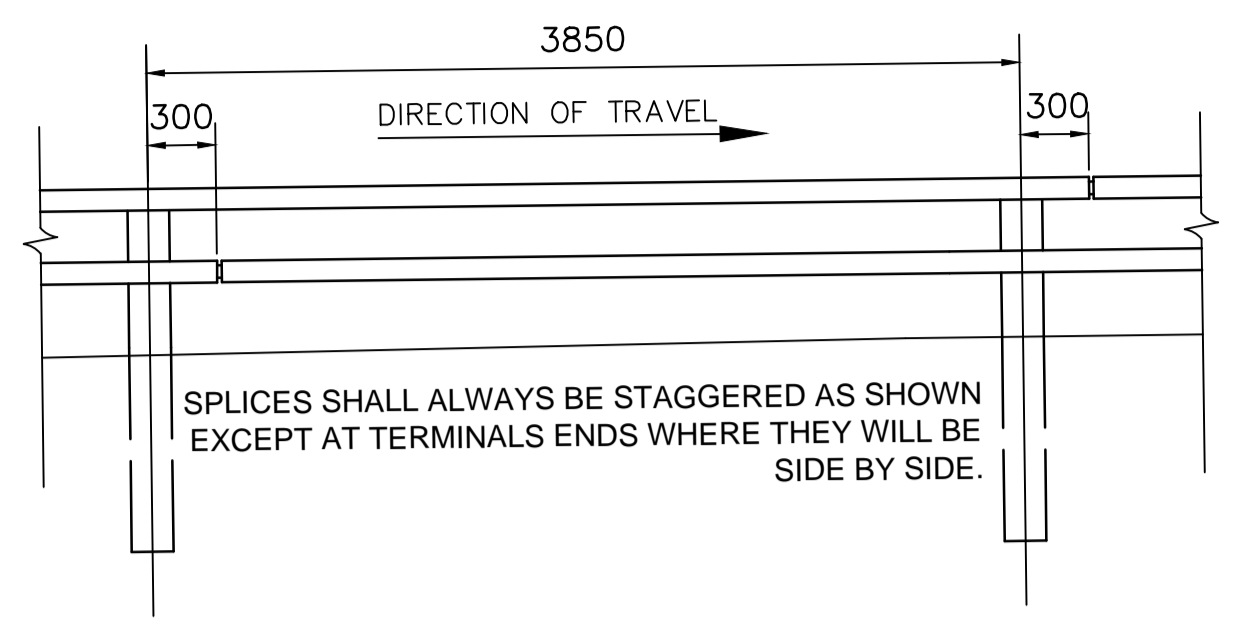
SECTION B - B
N.T.S.



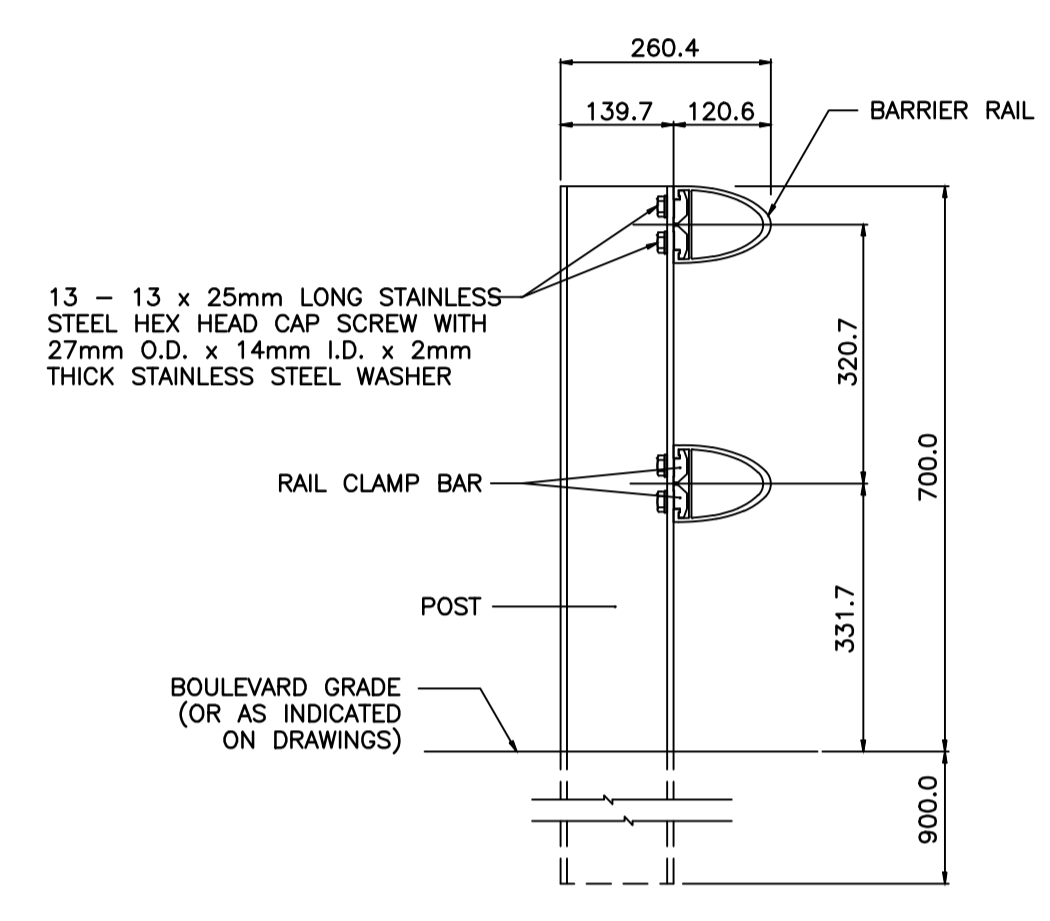
SECTION B - B
N.T.S.



SPLICE BAR TO RAIL ASSEMBLY DETAIL
N.T.S.



ALUMINUM RAIL SPICE STAGGER
N.T.S.



RAIL TO POST ASSEMBLY DETAIL
N.T.S.

CONSTRUCTION NOTES

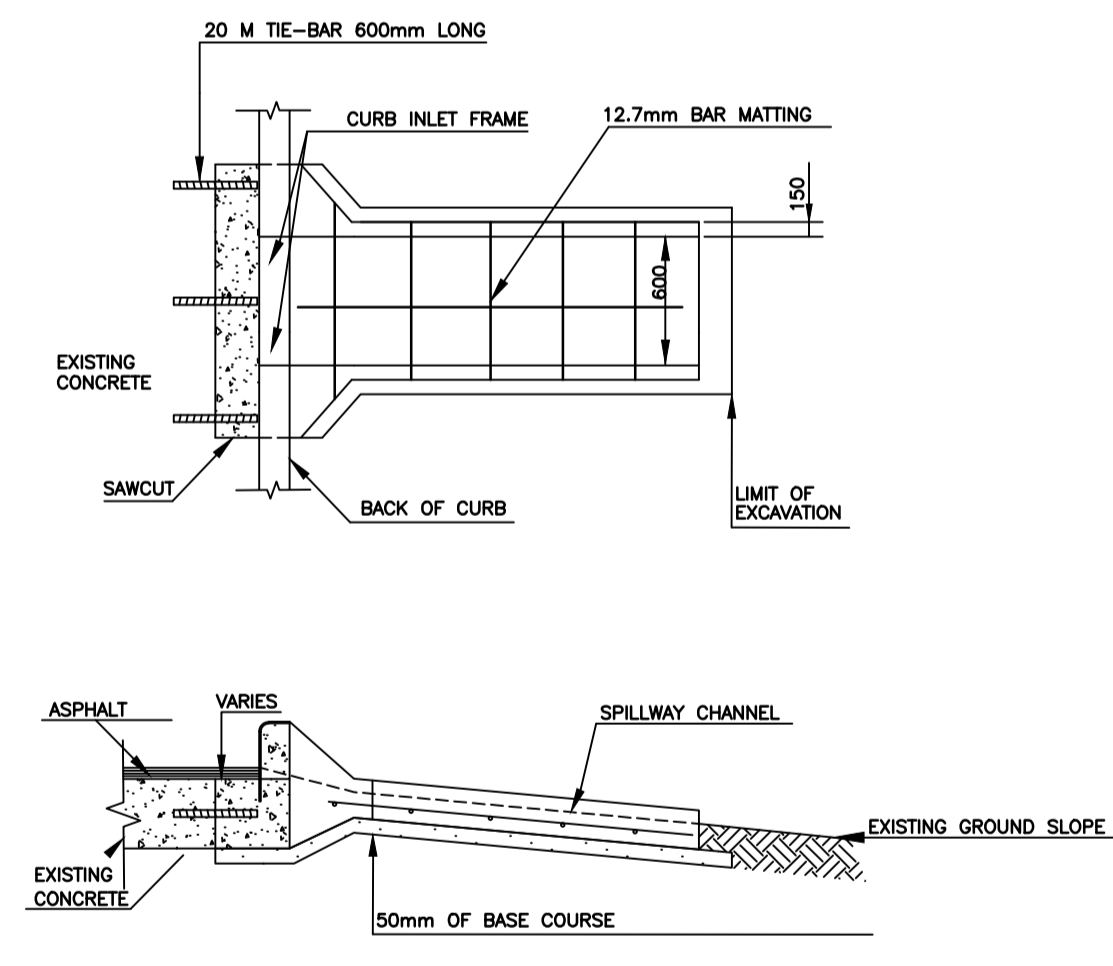
- 1) CURB REPLACEMENT AS DIRECTED BY THE CONTRACT ADMINISTRATOR.
- 2) ALL STREET RADIUS CURB UNDER 15M RADIUS SHALL BE REPLACED AS MODIFIED OR AS DIRECTED BY THE CONTRACT ADMINISTRATOR.
- 3) PAVEMENT REPAIRS SHOWN ARE ONLY A REPRESENTATIVE SAMPLE OF THE TENDERED QUANTITIES
- 4) ASPHALT TIE-INS ON APPROACHES TO BE DETERMINED IN THE FIELD BY THE CONTRACT ADMINISTRATOR.
- 5) ALL BULLNOSES TO HAVE SLOPED FACE.

WARNING

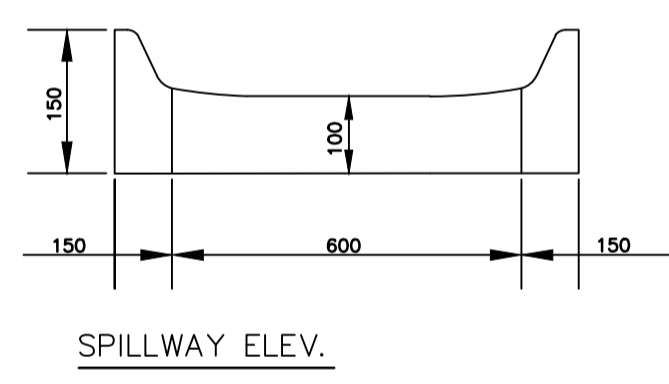
IF POWER EQUIPMENT OR EXPLOSIVES ARE TO BE USED FOR EXCAVATION ON THIS PROJECT THE CONTRACTOR MUST:

- 1) OBTAIN CLEARANCE FROM THE GAS UTILITY PRIOR TO EXCAVATION.
- 2) TAKE PRECAUTION TO AVOID DAMAGE TO GAS UTILITY INSTALLATIONS.

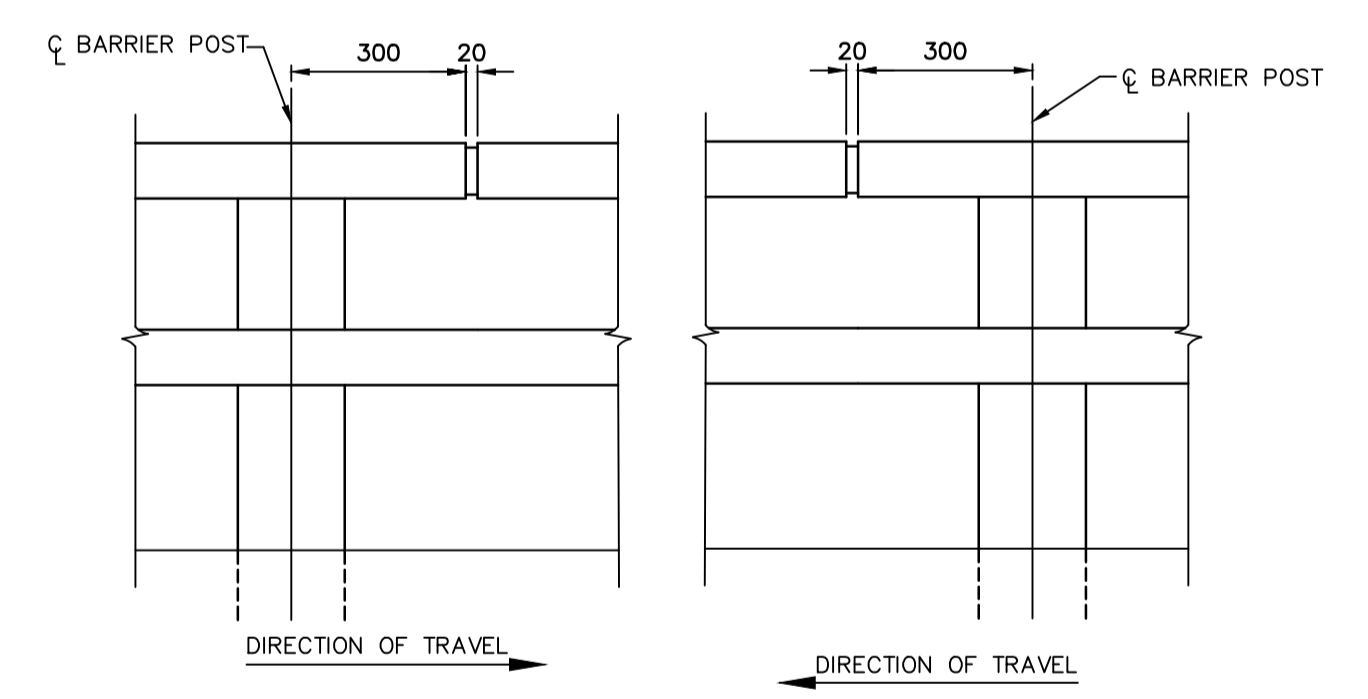
SEE PROVINCIAL REGULATION 210/72 FOR DETAILS



SPILLWAY CHANNEL DETAIL 'B'
REFER TO E13 CONSTRUCTION OF REINFORCED CONCRETE SPILLWAY WITH CURB INLET FRAME.
N.T.S.



SPILLWAY ELEV.



RAIL SPICE LOCATION
N.T.S.

METRIC
WHOLE NUMBERS INDICATE MILLIMETRES
DECIMALIZED NUMBERS INDICATE METRES

BID OPPORTUNITY NO. 9-2013

⊕	HYDRANT	◆	---	LDS/WWS	---	PAVED SHOULDER (TYP.)	⋯
⊕	RAILWAY WARNING SIGNALS	◆	---	WATERMAIN	---	CULVERT	---
⊕	PEDESTRIAN X-WALK	◆	---	GAS	---	RAMP CURB	---
⊕	SURVEY BAR	◆	---	HYDRO	---	EXISTING	---
⊕	O.L.S.	◆	---	TRAFFIC SIGNALS	---	LEGEND - PLAN	---
⊕	MANHOLE	◆	---	MTS	---	PROPOSED	---
⊕	CATCH BASIN	◆	---	CURB RENEWAL	---		---
⊕	CURB INLET	◆	231.000	ELEVATIONS	[231.000]	TURN LANES	---
⊕	HYDRO POLE	◆	---	PROPERTY LINE	---	NORTH GUTTER	---
⊕	TRAFFIC SIGNAL POLE	◆	---	GEODETIC BENCH MARK	---	SOUTH GUTTER	---
⊕	OVERHEAD SIGN	◆	---	CONCRETE	---	DITCH (SOUTH)	---
EXISTING	LEGEND - PLAN	PROPOSED	EXISTING	LEGEND - PLAN	PROPOSED	EXISTING	LEGEND - PROFILE

LOCATION APPROVED
UNDERGROUND STRUCTURES

SUPR. U/G STRUCTURES COMMITTEE DATE

NOTE:
LOCATION OF UNDERGROUND STRUCTURES AS SHOWN ARE BASED ON THE BEST INFORMATION AVAILABLE, BUT NO GUARANTEE IS GIVEN THAT ALL EXISTING UTILITIES ARE SHOWN OR THAT THE GIVEN LOCATIONS ARE EXACT. CONFIRMATION OF EXISTENCE AND EXACT LOCATION OF ALL SERVICES MUST BE OBTAINED FROM THE INDIVIDUAL UTILITIES BEFORE PROCEEDING WITH CONSTRUCTION.

B.M. ELEV.	GBM 64-012 232.418
D.	SUBMIT FOR PLAN APPROVAL 12/21/12 S.M.
NO.	REVISIONS
	DATE BY

ENGINEERING DIVISION TECHNOLOGY SERVICES BRANCH 106 - 1155 PACIFIC AVE	
DESIGNED BY S.M.	CHECKED BY A.P.
DRAWN BY S.M.	APPROVED BY
HOR. SCALE: 1 : 500	
VERTICAL: 1 : 10	

ENGINEER'S SEAL
R.T. CUNNINGHAM
Member
REGISTERED PROFESSIONAL ENGINEER

ORIGINAL SIGNED BY
R.T.C. MARCH 4/2013

THE CITY OF WINNIPEG
PUBLIC WORKS DEPARTMENT

MCGILLIVRAY BOULEVARD EASTBOUND
FROM IRENE STEET TO PEMBINA HIGHWAY
ASPHALT OVERLAY AND ASSOCIATED WORKS
MISCELLANEOUS DETAILS

CITY DRAWING NUMBER
P-3340-5
SHEET 5 OF 5

5