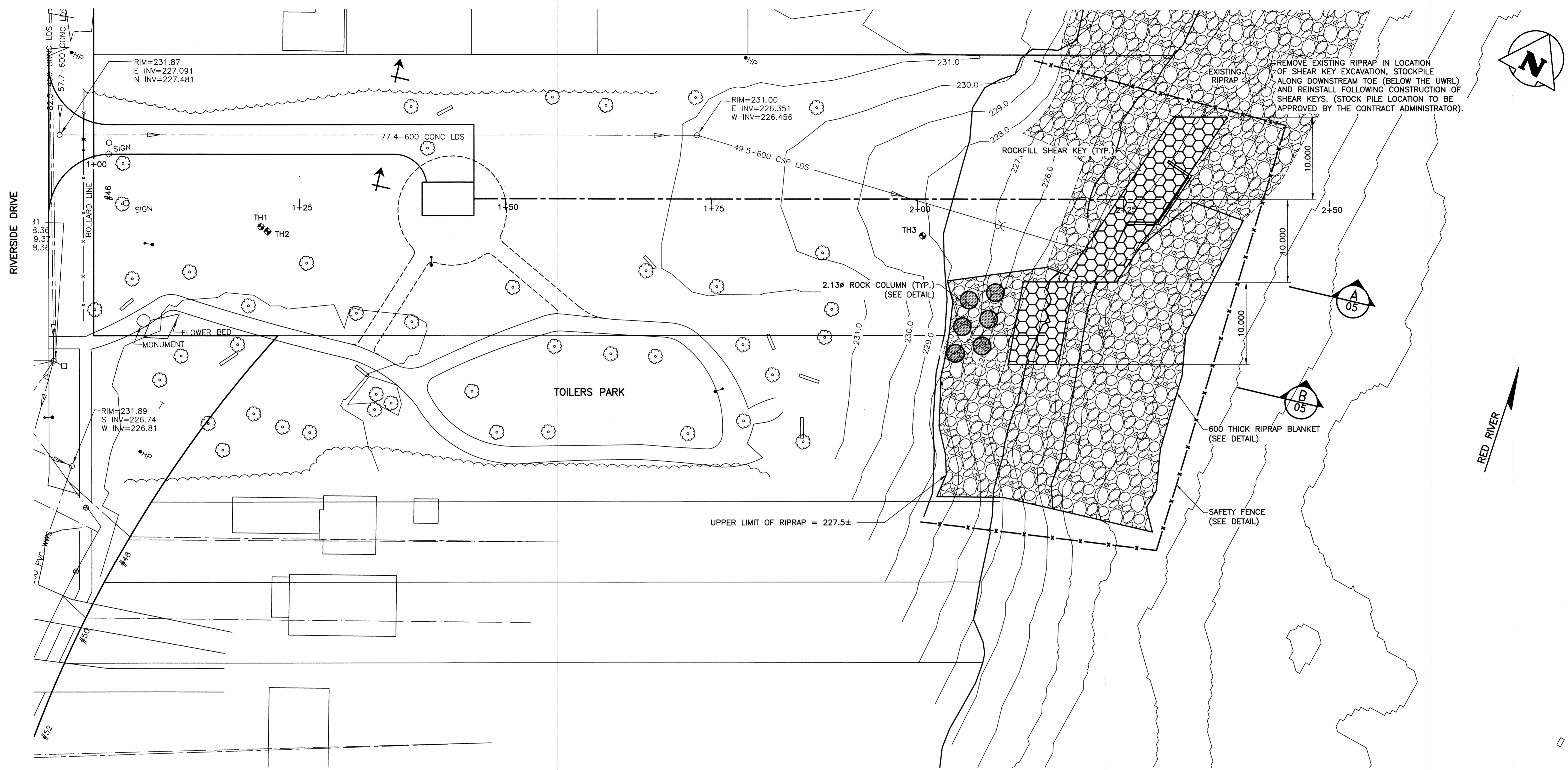
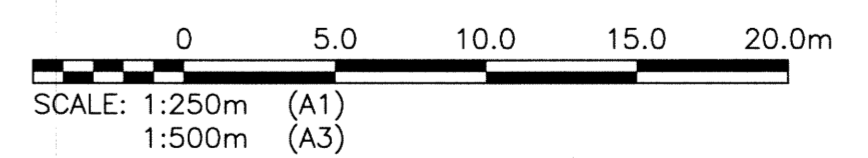


File Name: P:\Projects\2011\11-0107-18_DocControl\ToBeIssued\DWG\11-0107-18_LD-7234-Rev 0.dwg - Tab: LD-7234 Plotted By: DDeroche 13/11/05 [Tue 12:54pm]



BYNG PLACE OUTFALL RR-37B

- NOTES:
- LAYOUT OF ROCKFILL COLUMNS AND SHEAR KEY TO BE PROVIDED BY THE CONTRACT ADMINISTRATOR.
 - CONTRACTOR SHALL NEITHER PRUNE NOR REMOVE EXISTING TREES WITHOUT PRIOR APPROVAL FROM THE CONTRACT ADMINISTRATOR.



METRIC
WHOLE NUMBERS INDICATE MILLIMETRES
DECIMALIZED NUMBERS INDICATE METRES



150 WM	WATERMAIN	150 WM	HYDRO				
300 LDS	LAND DRAINAGE SEWER	300 LDS	M.T.S.				
250 WWS	WASTE WATER SEWER	250 WWS	PROPERTY LINE				
MANHOLE		MANHOLE	SURVEY BAR				
CATCH BASIN		CATCH BASIN	LIGHT STANDARD				
CURB INLET		CURB INLET	HYDRO POLE				
JUNCTIONS		JUNCTIONS	GUY WIRE				
CULVERT		CULVERT	SIGN				
GAS		GAS	BUSH LINE				
EXISTING	LEGEND-PLAN	PROPOSED	FENCE				
			ELEVATION				
			32.231				
			LEGEND-PROFILE				
			PROPOSED				

LOCATION APPROVED UNDERGROUND STRUCTURES		B.M. KGS BASE ELEV. -	DWGS BASED ON C.S.R.S. NAD 83 SYSTEM, UTM GRID
SUPV. U/G STRUCTURES COMMITTEE	DATE		
NOTE: LOCATION OF UNDERGROUND STRUCTURES AS SHOWN ARE BASED ON THE BEST INFORMATION AVAILABLE BUT NO GUARANTEE IS GIVEN THAT ALL EXISTING UTILITIES ARE SHOWN OR THAT THE GIVEN LOCATIONS ARE EXACT. CONFIRMATION OF EXISTENCE AND EXACT LOCATION OF ALL SERVICES MUST BE OBTAINED FROM THE INDIVIDUAL UTILITIES BEFORE PROCEEDING WITH CONSTRUCTION.			
0	ISSUED FOR TENDER	13/10/05	
NO.	REVISIONS	DATE	BY

KGS GROUP CONSULTING ENGINEERS	
DESIGNED BY	KMR
CHECKED BY	DEA
DRAWN BY	GEL
APPROVED BY	
SCALE:	1:250
RELEASED FOR CONSTRUCTION:	
DATE	13/11/06

ENGINEER'S SEAL

 CONSULTANT DRAWING NO. 11-0107-18_LD-7234

THE CITY OF WINNIPEG WATER & WASTE DEPARTMENT

COCKBURN/CALROSSIE COMBINED SEWER RELIEF WORKS

NEW BYNG PLACE OUTFALL (RR-37B) RIVERBANK REMEDIATION: PLAN

SHEET 01 OF 01
 CAD FILE DRAWING NUMBER CALROSSIE OUTFALL-GEO PLOT
 CITY DRAWING NUMBER LD-7234